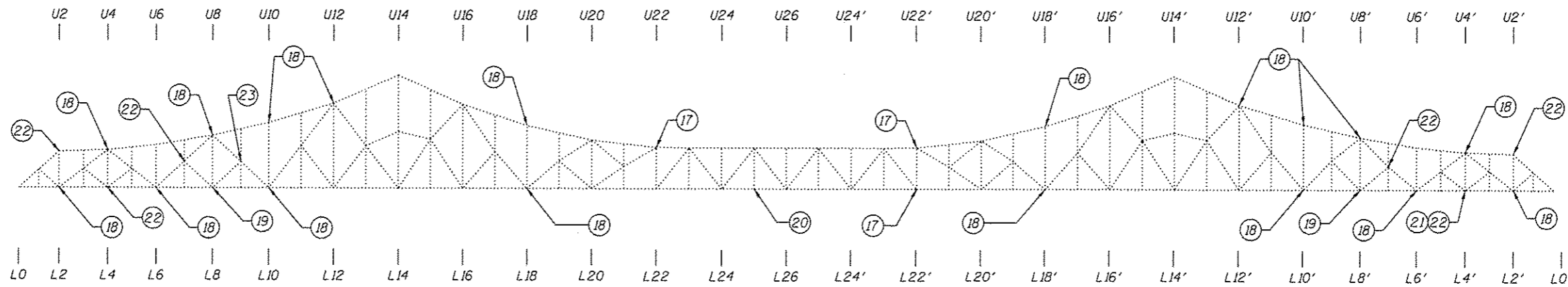
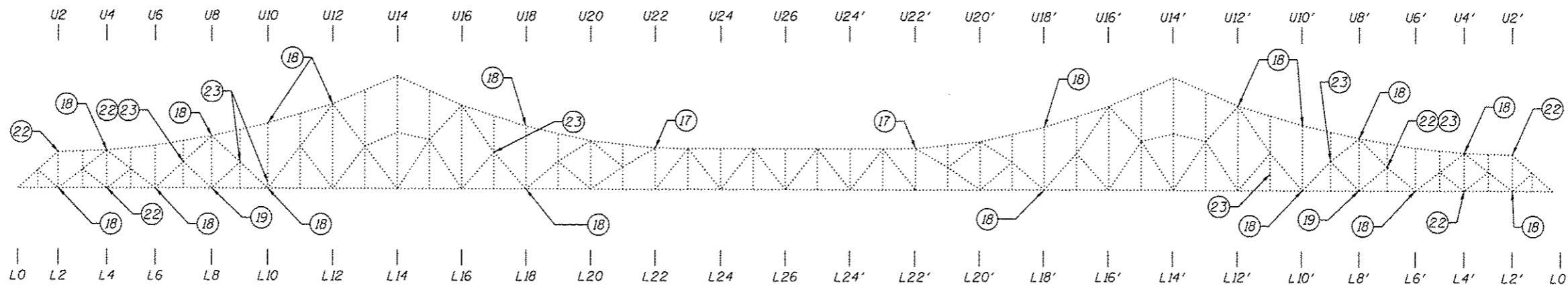


Upper Gusset Plate Numbering



NORTH TRUSS
(Looking North)

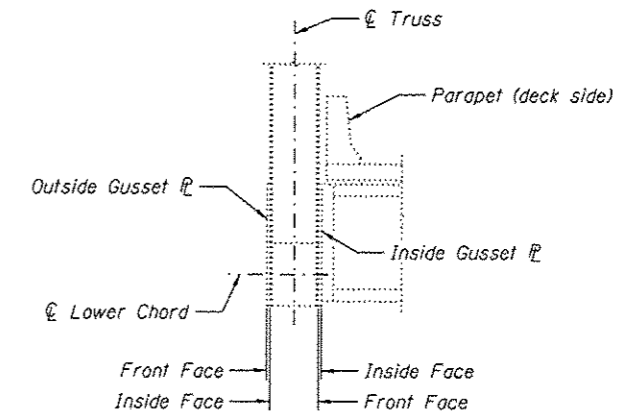
Upper Gusset Plate Numbering



SOUTH TRUSS
(Looking North)

MAIN SPAN TRUSS REPAIR SCHEDULE

ID. NO.	Item	Location	Action
17	Guide Pin Plates	Top and Bottom Chords U22N-U23N, U22S-U23S, U22'N-U23'N, U22'S-U23'S, L22'N-L21'N	Attach new guide plates
18	Gusset Plate Strengthening (North and South Truss)	Upper Chord Gusset Plates U4, U8, U10, U12, U18, U18', U12', U10', U8', U4'	Strengthen
		Lower Chord Gusset Plates L2, L6, L10, L18, L18', L10', L6', L2'	
19	Gusset Plate Repairs	L8S, L8'S, L8N, L8'N	Repair
20	Gusset Plate Repair	L25N	Repair delaminated IS gusset plate
21	Gusset Plate Repair	L4'N	Straighten warped OS gusset plate
22	Gusset Plate Stiffening	L4, M7, U2, L4', M7', U2' (North and South Truss)	Stiffen slender edges of gusset plates
23	Tack Welds	Sway Brace at L7S-M7S; Sway Brace at L9S-M9S; Sway Brace at L9N-M9N; L10S-U10S 4' above deck; M17S-U17S 15' above deck; L11'S-M11'S 20' above deck; Sway Brace at L9'S-M9'S; L7'S-M7'S 20' above deck	Remove partially cracked tack welds



TRUSS CROSS SECTION

Notes:
For 2013 NBIS defect item number and sheet reference, see sheets S4 and S5.
Tack welds shall be removed in accordance with the general notes, see sheet S3. The cost of removing tack welds is included with Structural Steel Repair.



USER NAME	DESIGNED - MEL	REVISED
PLOT SCALE	CHECKED - COB	REVISED
PLOT DATE	DRAWN - AEC	REVISED
	CHECKED - JMH	REVISED

STATE OF ILLINOIS
DEPARTMENT OF TRANSPORTATION

GENERAL PLAN AND ELEVATION - MAIN SPAN REPAIRS 2
S.N. 082-6001 MLK BRIDGE OVER MISSISSIPPI RIVER

SHEET NO. 58 OF 5138 SHEETS

F.A.P. RTE.	SECTION	COUNTY	TOTAL SHEETS	SHEET NO.
799	1BR, DRS-2	ST. CLAIR	156	26
CONTRACT NO. 76B03				
ILLINOIS FED. AID PROJECT				