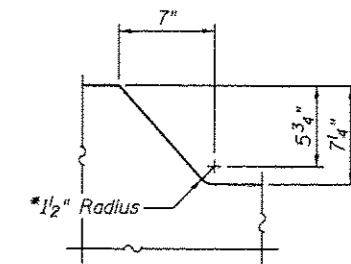


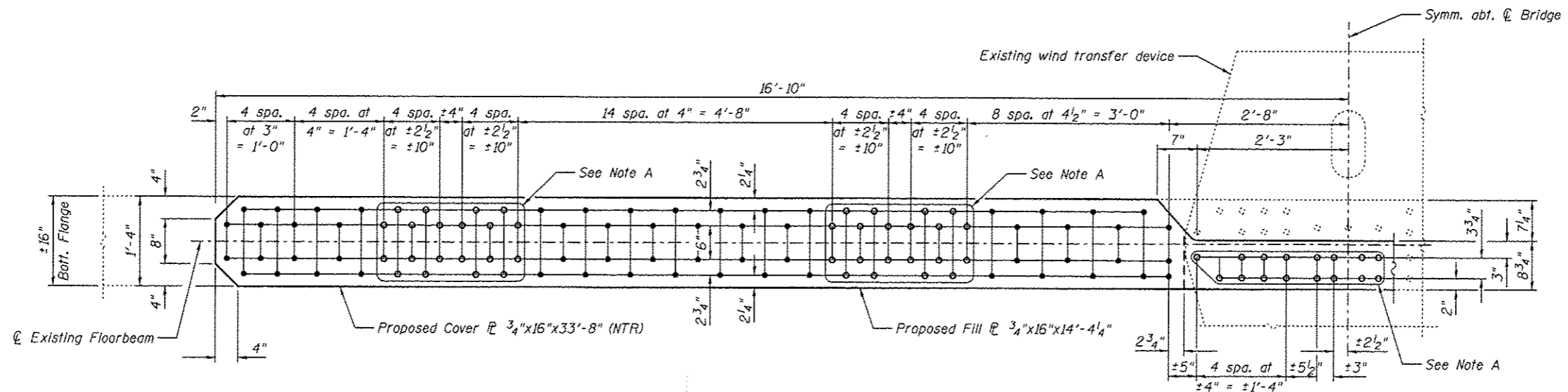
**TOP FLANGE STRENGTHENING
AT FLOORBEAM L22'**

Note A:
Field drill holes using existing holes as template.
Remainder of holes may be shop or field drilled.



* Grind smooth to an ANSI 250 finish

**COPE DETAIL
At Floorbeam L22'**



**BOTTOM FLANGE STRENGTHENING
AT FLOORBEAM L22'**

Notes:
Load carrying components designed as "NTR" shall conform to the Impact Testing Requirement, Zone 2.



USER NAME :	DESIGNED - MEL	REVISED
PLOT SCALE :	CHECKED - YSS	REVISED
PLOT DATE : 03/20/2014	DRAWN - PRC	REVISED
	CHECKED - MEL	REVISED

STATE OF ILLINOIS
DEPARTMENT OF TRANSPORTATION

MAIN SPANS GRID DECK FRAMING DETAILS - 6
S.N. 082-6001 MLK BRIDGE OVER MISSISSIPPI RIVER

SHEET NO. S22 OF S138 SHEETS

F.A.P. RTE.	SECTION	COUNTY	TOTAL SHEETS	SHEET NO.
799	1BR. DRS-2	ST. CLAIR	156	40
CONTRACT NO. 76803				
ILLINOIS FED. AID PROJECT				