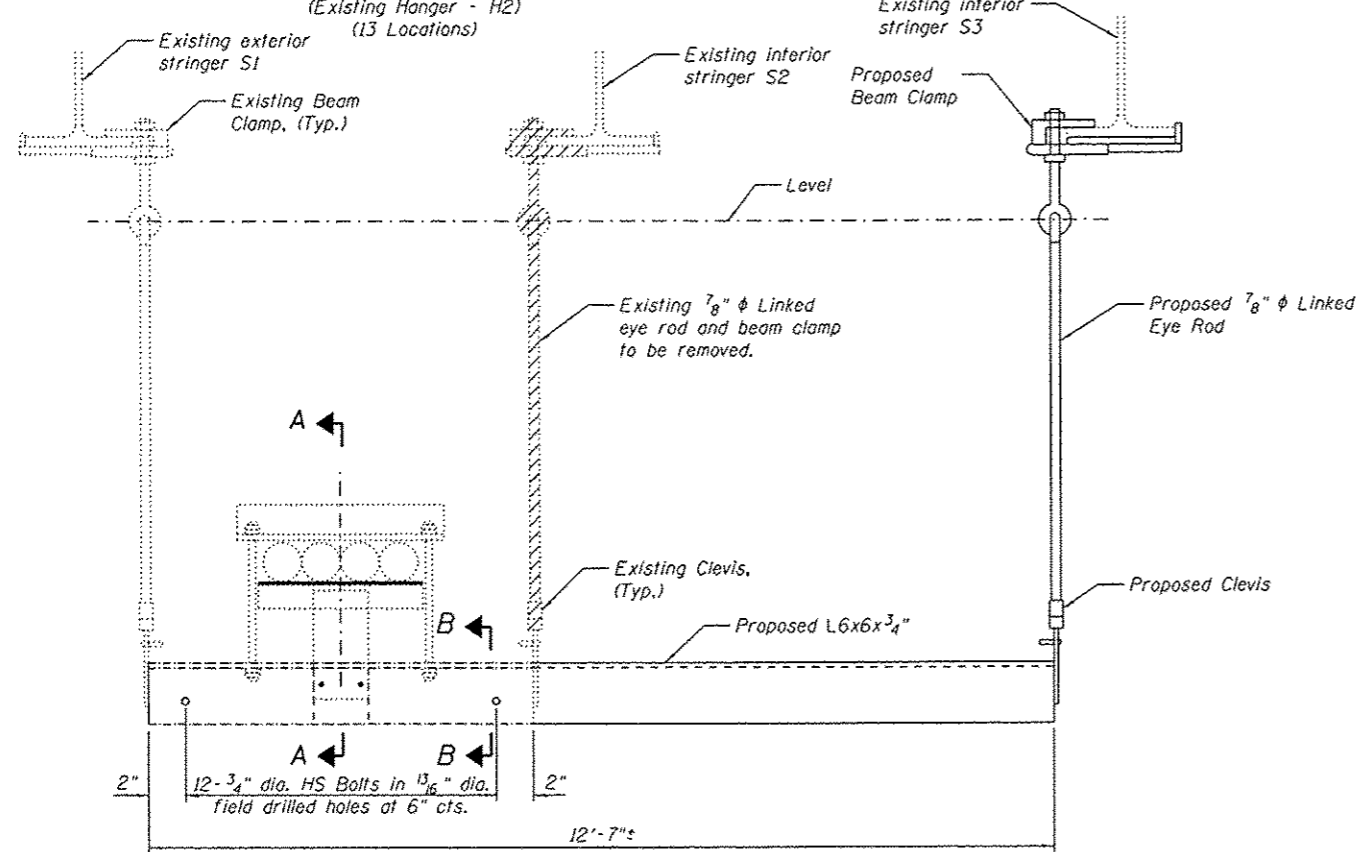
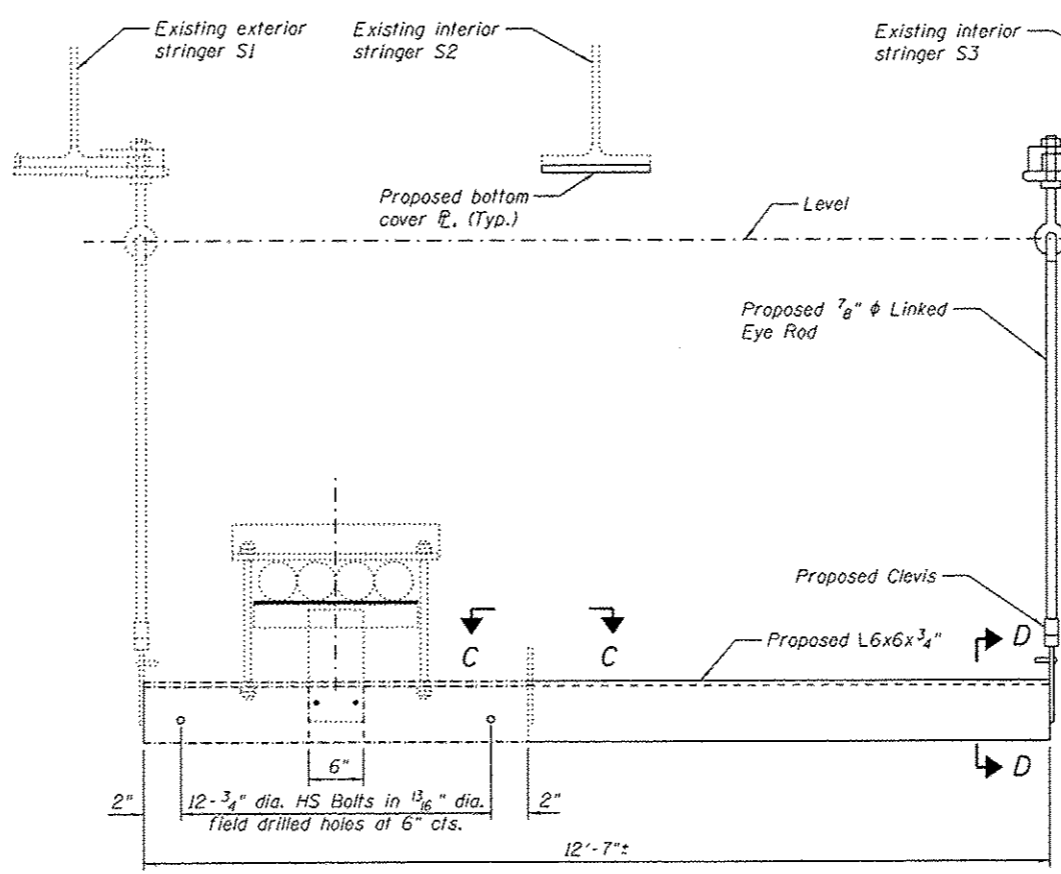


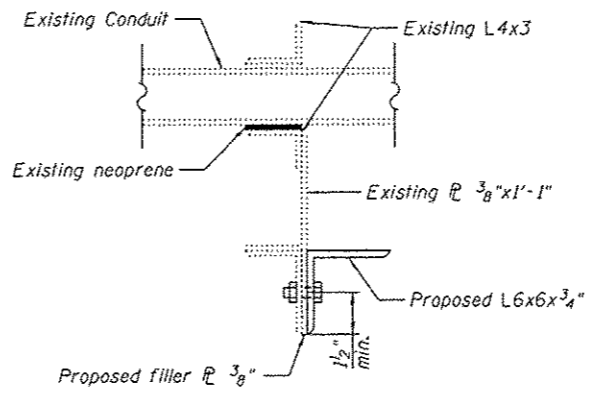
EXISTING CONFIGURATION
(Existing Hanger - H2)
(13 Locations)



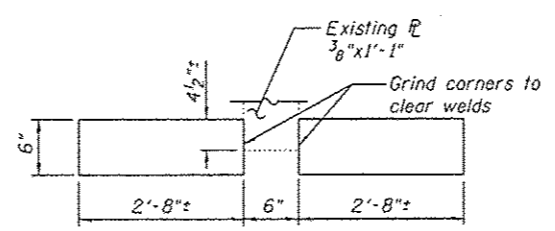
CONDUIT SUPPORT MODIFICATION



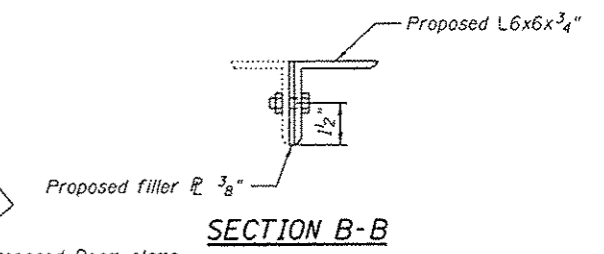
FINAL CONFIGURATION
(Modified Hanger - H2)
(13 Locations)



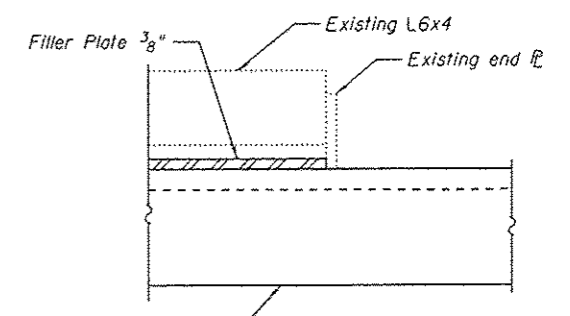
SECTION A-A



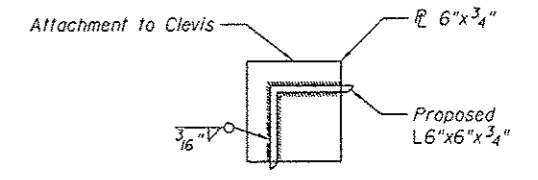
FILLER PLATES 3/8"



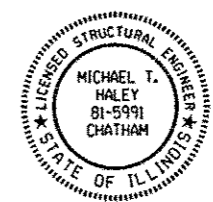
SECTION B-B



VIEW C-C



SECTION D-D



APPROVED
For Structural Adequacy Only

D. Carl Perry, P.E.
Engineer of Bridges & Structures

Michael T. Haley 5-1-14
Date

Michael T. Haley
Licensed Structural Engineer
State of Illinois No. 81-5991
Expires 11/30/2014

MODIFICATION SEQUENCE FOR H2

1. Complete rehabilitation of interior stringer S3.
2. Install new L6x6x3/4\"/>
- 3. Attach new hanger to interior stringer S3.
- 4. Remove existing hanger attached to interior stringer S2.

Notes:
The Contractor is to verify the existing dimensions prior to fabricating the support assembly. The existing details shown here are derived from the existing plans. It is intended to keep the utility conduit at the current elevation.
See sheets S026 and S027 for details of hangers H6 and H12.
See sheet S027 of S138 for locations of hangers, additional notes and bill of material.
See sheet S088 of S138 for details about painting proposed steel.

(Sheet 1 of 3)



USER NAME *	DESIGNED - JJA	REVISD -
FILE NAME *	CHECKED - TBP	REVISD -
PLOT SCALE *	DRAWN - AJF	REVISD -
PLOT DATE *	CHECKED - VPT	REVISD -

STATE OF ILLINOIS
DEPARTMENT OF TRANSPORTATION

MAIN SPANS CONDUIT HANGER MODIFICATION DETAILS
S.N. 082-6001 MLK BRIDGE OVER MISSISSIPPI RIVER

SHEET NO. S025 OF S138 SHEETS

F.A.P. RATE	SECTION	COUNTY	TOTAL SHEETS	SHEET NO.
799	1BR, DRS-2	ST. CLAIR	156	043
			CONTRACT NO. 76B03	
ILLINOIS FED. AID PROJECT				