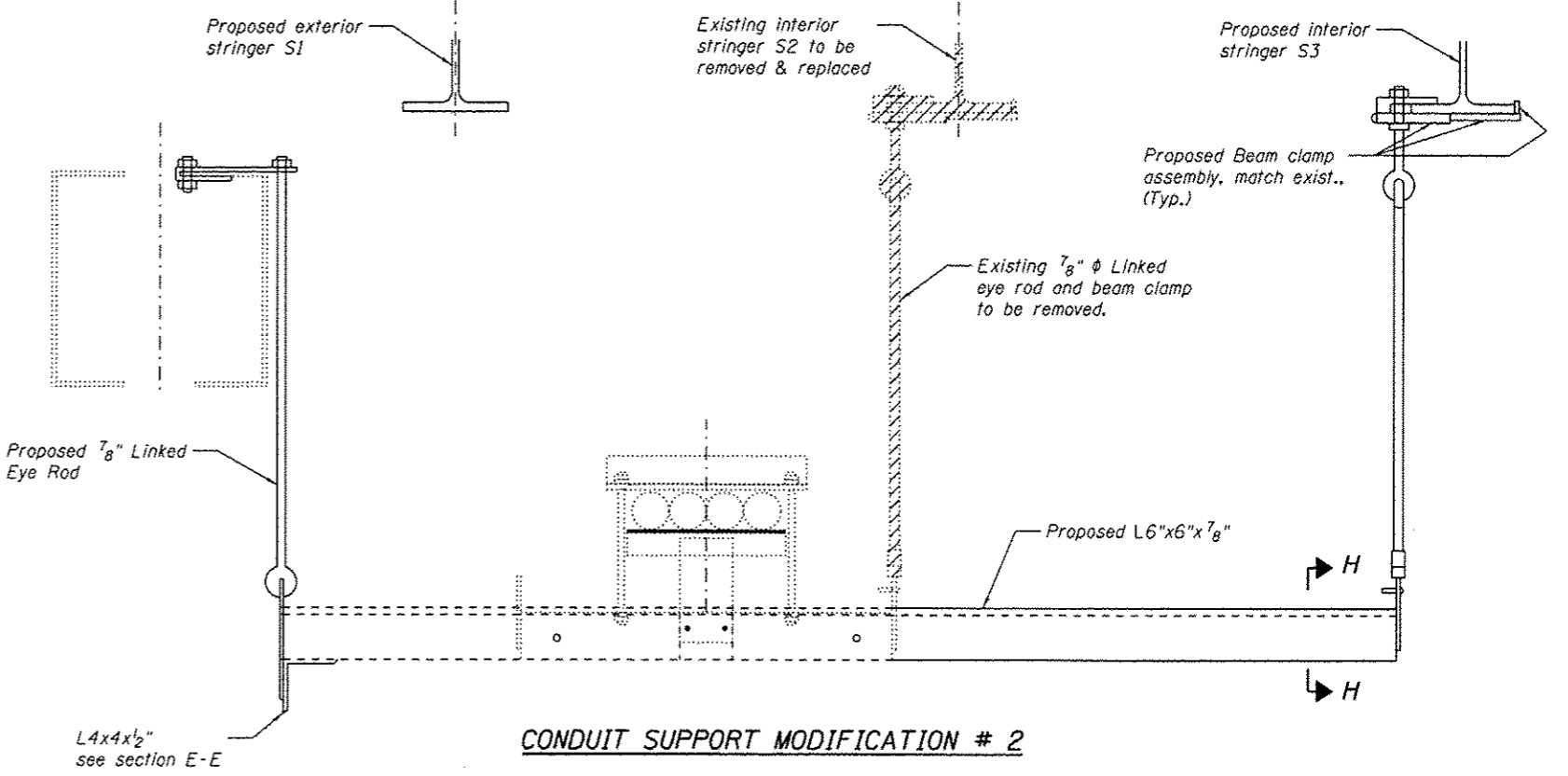
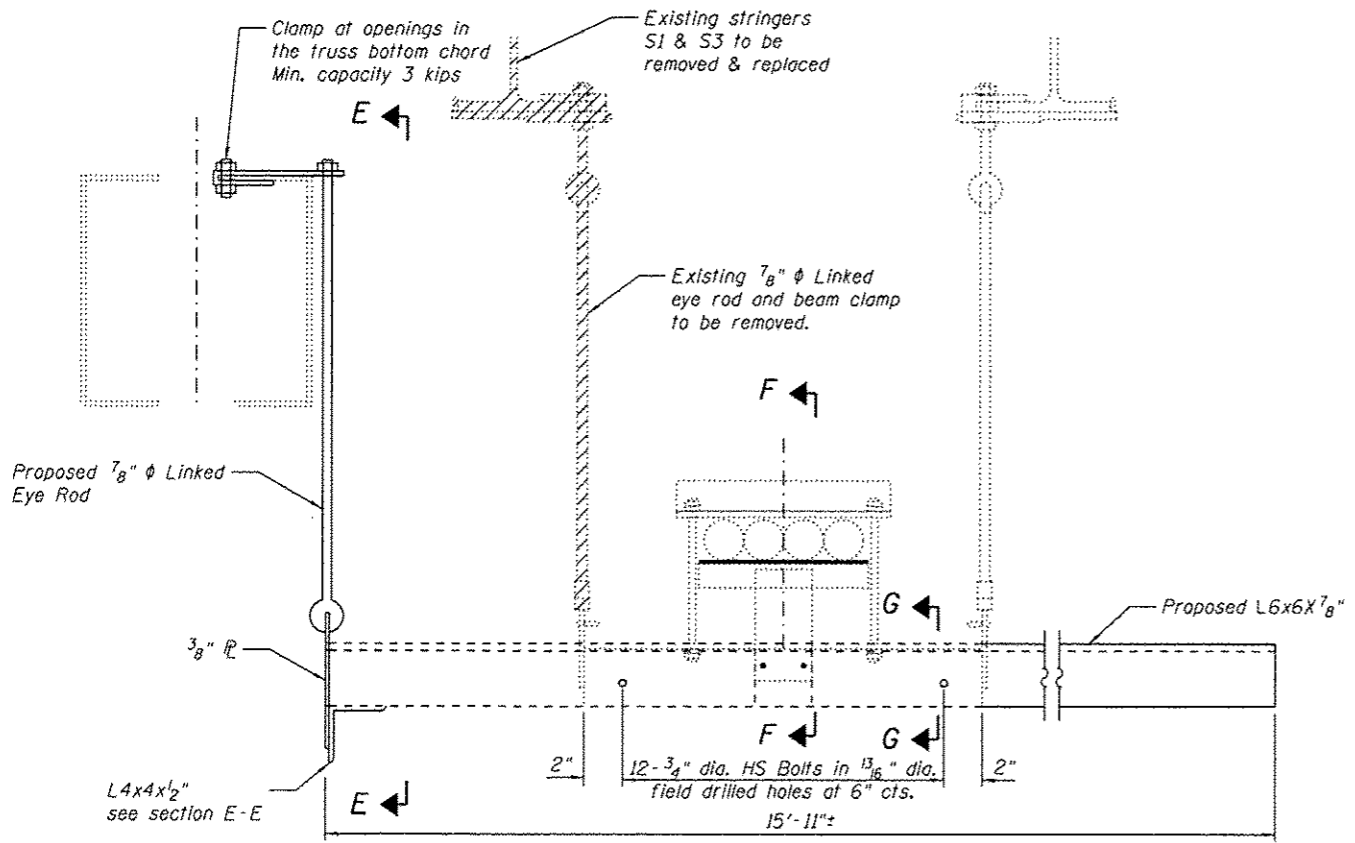


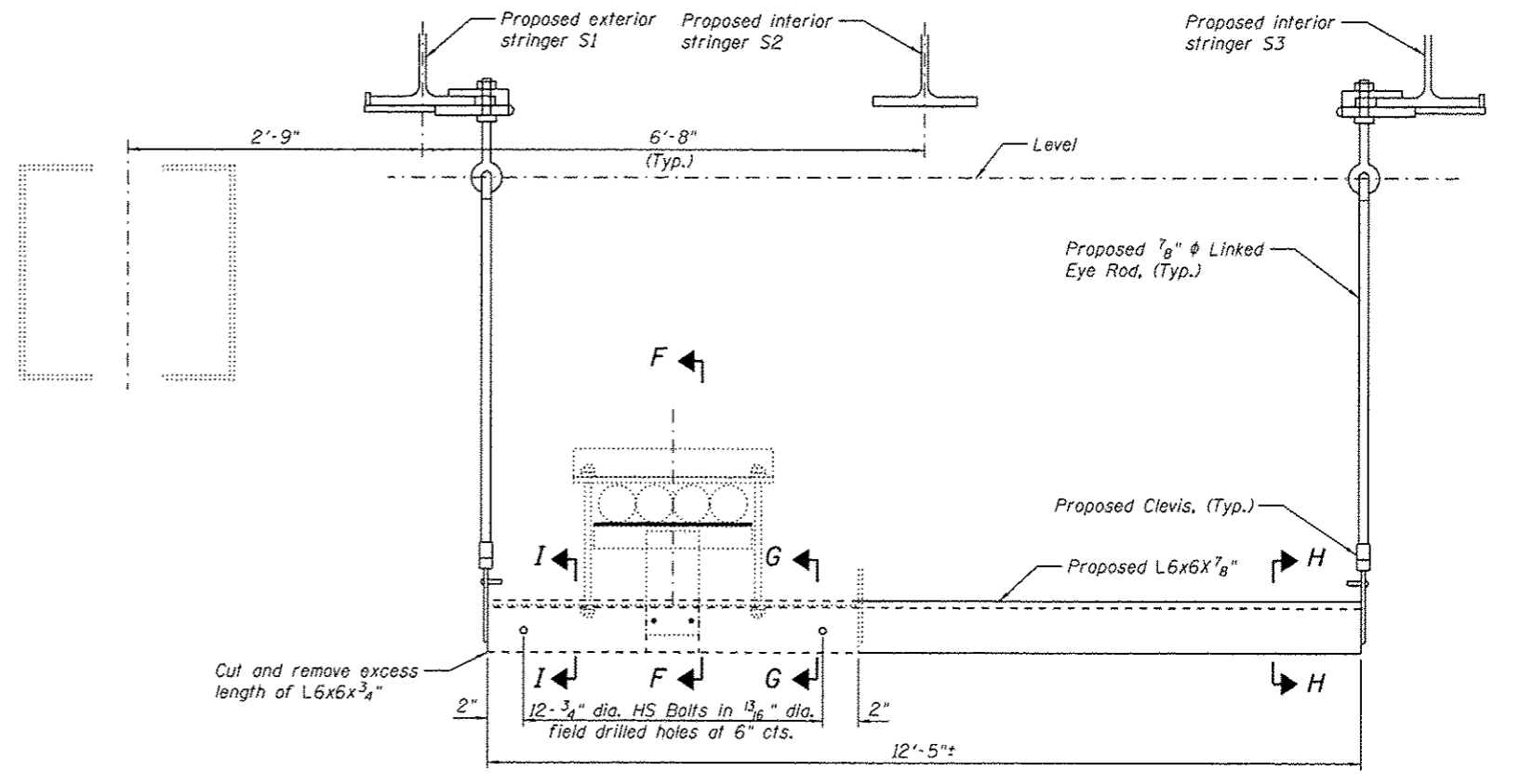
EXISTING CONFIGURATION
 (Existing Hangers - H6 & H12)
 (Total 40 Locations, 4-H6 and 36-H12)



CONDUIT SUPPORT MODIFICATION # 2



CONDUIT SUPPORT MODIFICATION # 1



FINAL CONFIGURATION
 (Modified Hangers - H6 & H12)
 (Total 40 Locations, 4-H6 and 36-H12)

Notes:
 See sheet S027 of S138 for bill of material, cross sections, locations of hangers, notes and other details.

(Sheet 2 of 3)



USER NAME *	DESIGNED - JJA	REVISED -
FILE NAME *	CHECKED - TBP	REVISED -
PLOT SCALE *	DRAWN - AJF	REVISED -
PLOT DATE *	CHECKED - VPT	REVISED -

STATE OF ILLINOIS
 DEPARTMENT OF TRANSPORTATION

MAIN SPANS CONDUIT HANGER MODIFICATION DETAILS
 S.N. 082-6001 MLK BRIDGE OVER MISSISSIPPI RIVER

F.A.P. RTE.	SECTION	COUNTY	TOTAL SHEETS	SHEET NO.
799	1BR, DR5-2	ST. CLAIR	156	044
CONTRACT NO. 76B03				
ILLINOIS FED. AID PROJECT				

SHEET NO. S026 OF S138 SHEETS