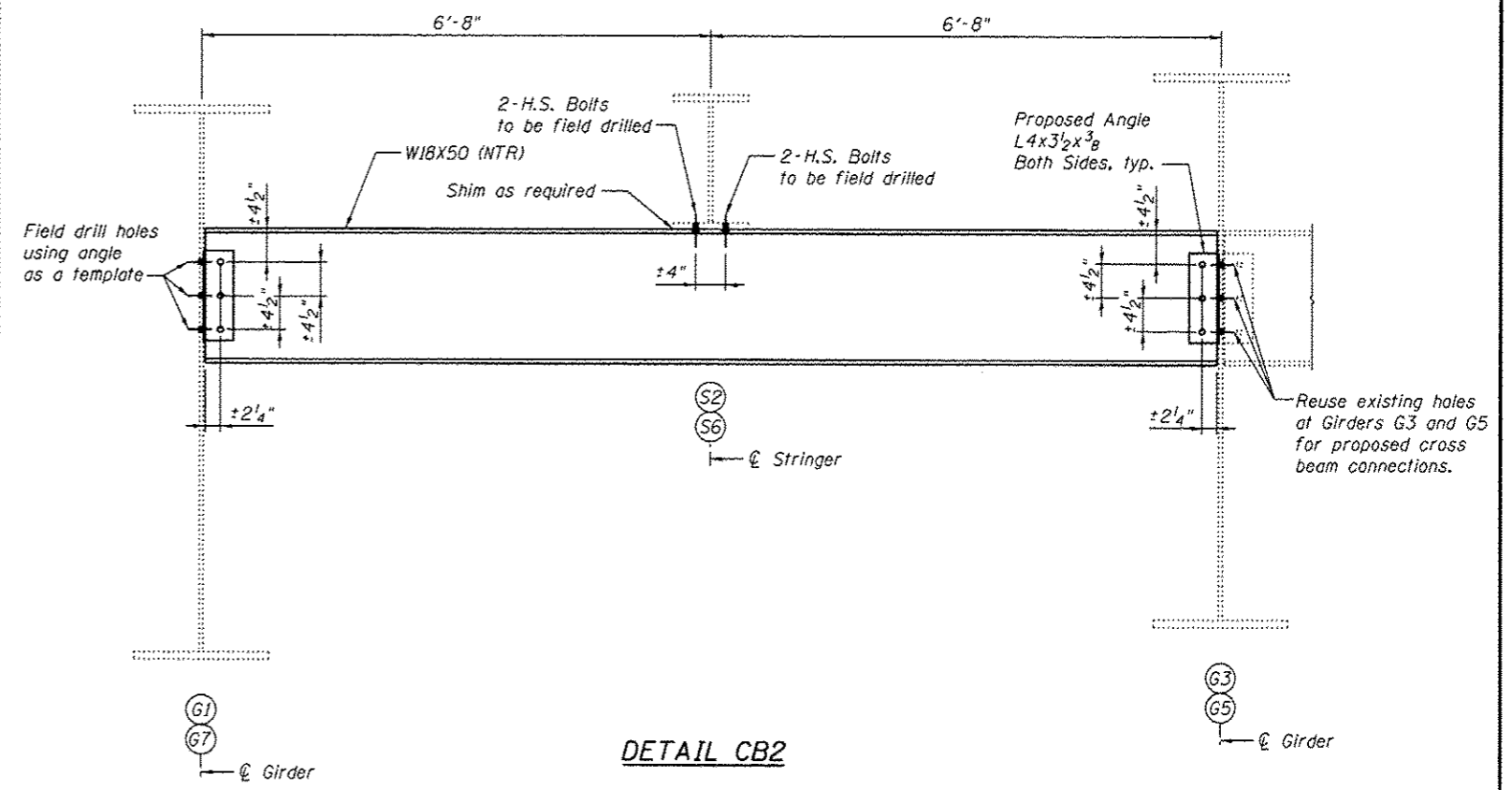
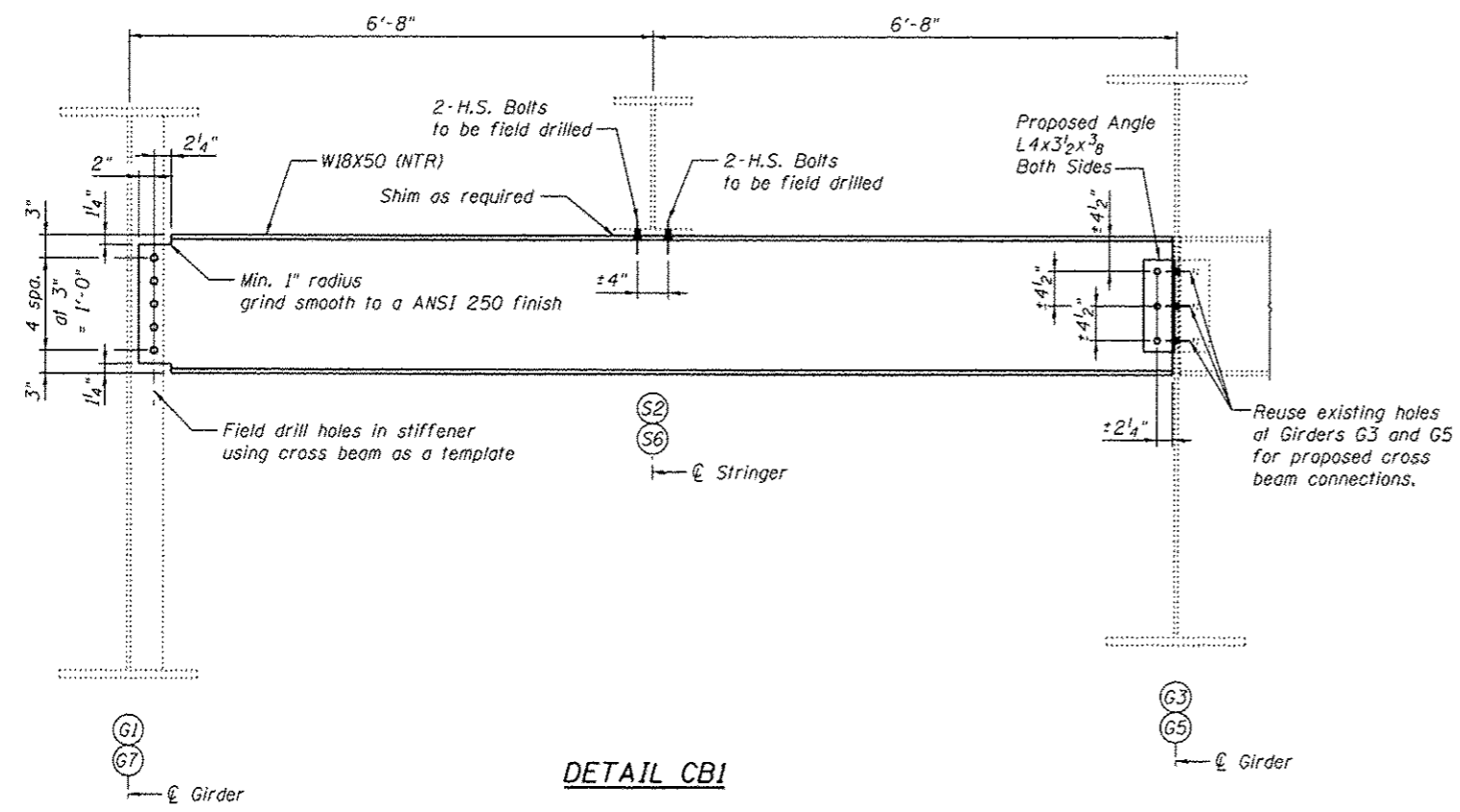


**FRAMING PLAN  
SPAN 6**



**DETAIL CB2**

**Procedure**  
Install cross beams between Girders G1 and G3 and G5 and G7 to provide additional support for Stringers S2 and S6.  
Clip cross beam flanges as approved by the Engineer if required for installation.



**DETAIL CBI**

**BILL OF MATERIAL**

Item	Unit	Total
Structural Steel Repair	Pound	8330

**Notes:**  
All bolted connections shown on this sheet shall be made with 3/4" dia. H.S. bolts.  
Load carrying components designed "NTR" shall conform to the Impact Testing Requirement, Zone 2.



USER NAME *	DESIGNED - CDB	REVISED
PLOT SCALE *	CHECKED - JMH	REVISED
PLOT DATE * 05/02/2014	DRAWN - AEC	REVISED
	CHECKED - CDB	REVISED

**STATE OF ILLINOIS  
DEPARTMENT OF TRANSPORTATION**

**MISSOURI APPROACH SPAN 6 CROSS BEAMS  
S.N. 082-6001 MLK BRIDGE OVER MISSISSIPPI RIVER**

F.A.P. RTE.	SECTION	COUNTY	TOTAL SHEETS	SHEET NO.
799	IBR, DRS-2	ST. CLAIR	156	61
CONTRACT NO. 76B03				