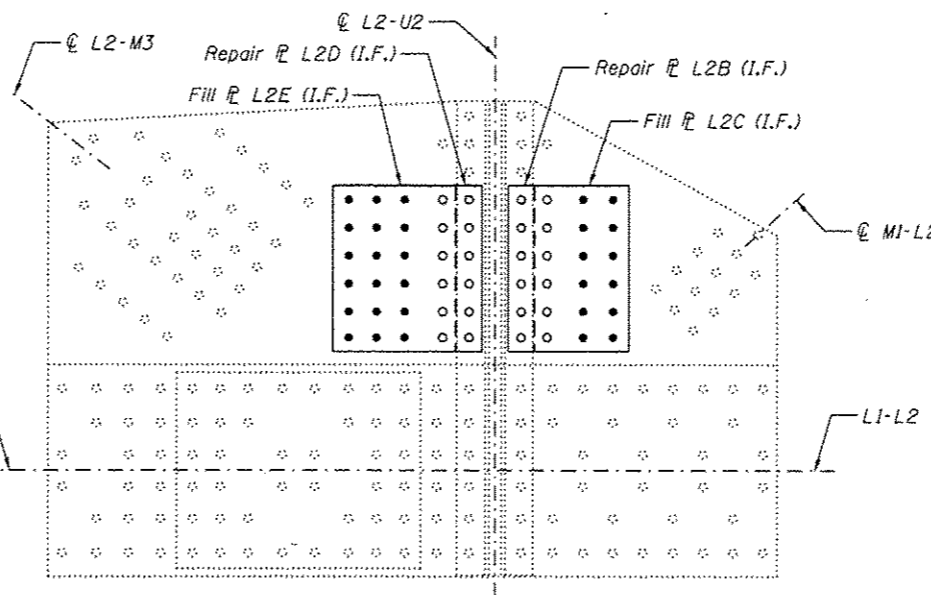
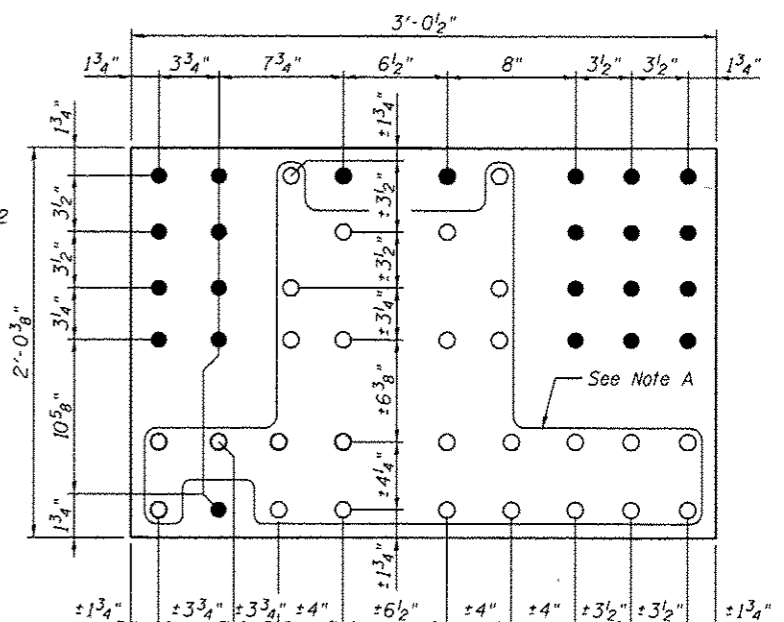


**OUTSIDE PLATE AT PANEL POINT L2N AND L2S**  
 (L2'N AND L2'S SIMILAR)  
 (Span 9 and Span 11)



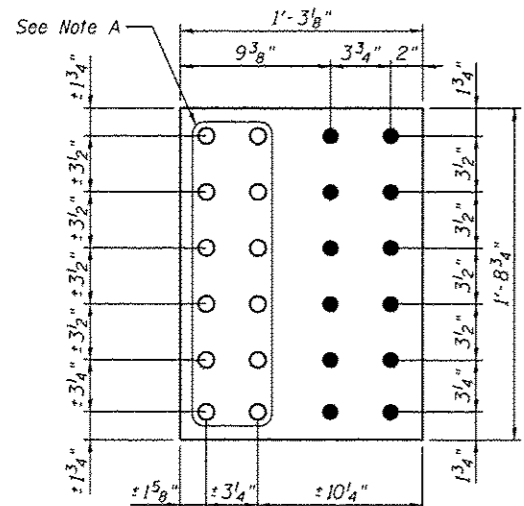
**INSIDE PLATE AT PANEL POINT L2N AND L2S**  
 (L2'N AND L2'S SIMILAR)  
 (Span 9 and Span 11)



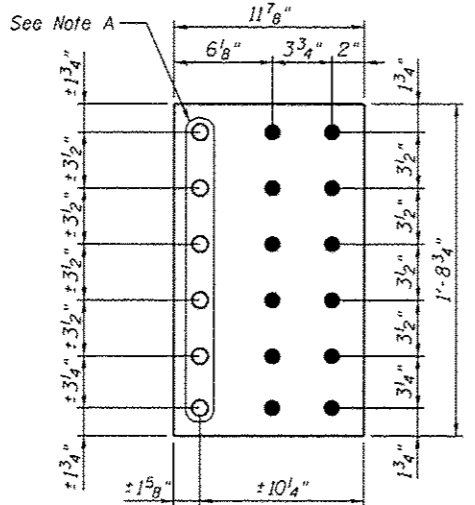
**REPAIR P L2A**  
 P 3/4" X 24 3/8" X 3'-0 1/2"

**GUSSET PLATE STRENGTHENING**

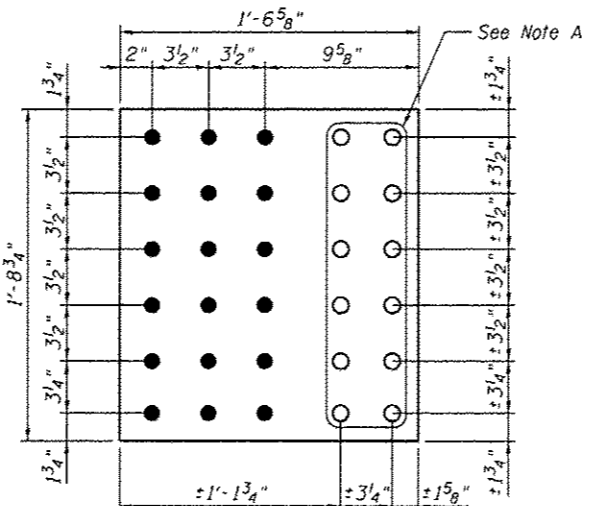
**Procedure**  
 Install strengthening plates and fills, one at a time, on the inside gusset plate, followed by the strengthening plate on the outside gusset. Strengthening plates on the inside and outside gussets shall not be installed at the same time.  
 If additional fasteners need to be removed other than those shown on this sheet, the Contractor shall submit a procedure for review and approval. If needed, the Contractor shall provide temporary support for floorbeams and joints.



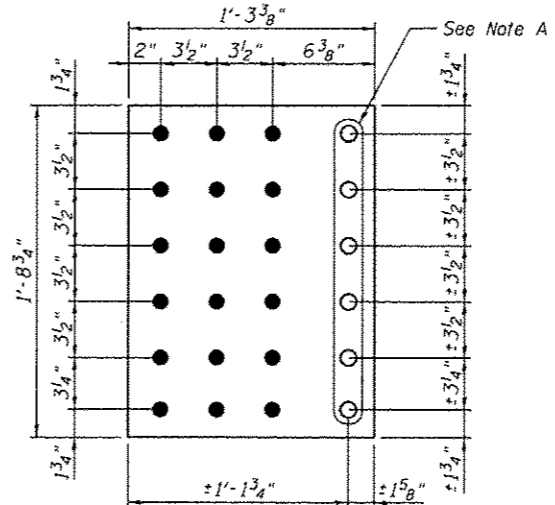
**REPAIR P L2B**  
 P 3/4" X 15 1/8" X 1'-8 3/4"



**FILL P L2C**  
 P 1/2" X 11 7/8" X 1'-8 3/4"



**REPAIR P L2D**  
 P 3/4" X 18 5/8" X 1'-8 3/4"



**FILL P L2E**  
 P 1/2" X 15 3/8" X 1'-8 3/4"

Note A:  
 Field drill holes using existing holes as template.  
 Remainder of holes may be shop or field drilled.

**BILL OF MATERIAL**

Item	Unit	Total
Structural Steel Repair	Pound	2,190

Note:  
 All bolted connections shown on this sheet shall be made with 1" dia. H.S. bolts unless otherwise noted.  
 For front and inside faces of gusset plates, see truss cross section on sheet S8.



USER NAME *	DESIGNED - MEL	REVISED
	CHECKED - COB	REVISED
PLOT SCALE *	DRAWN - AEC	REVISED
PLOT DATE = 05/02/2014	CHECKED - MEL	REVISED

STATE OF ILLINOIS  
 DEPARTMENT OF TRANSPORTATION

MAIN SPAN GUSSET PLATE STRENGTHENING - 1  
 S.N. 082-6001 MLK BRIDGE OVER MISSISSIPPI RIVER

F.A.P. RTE.	SECTION	COUNTY	TOTAL SHEETS	SHEET NO.
799	1BR, DRS-2	ST. CLAIR	156	64
CONTRACT NO. 76B03				
ILLINOIS FED. AID PROJECT				

SHEET NO. 546 OF 5138 SHEETS