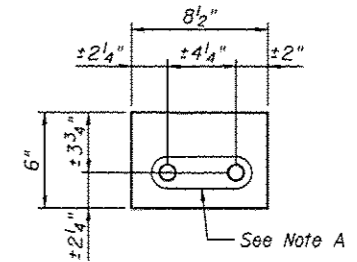


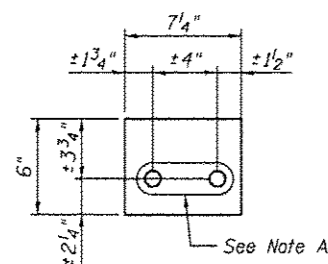
REPAIR P L6R
 P L 7/8" x 9 1/4" x 1'-8 1/2"



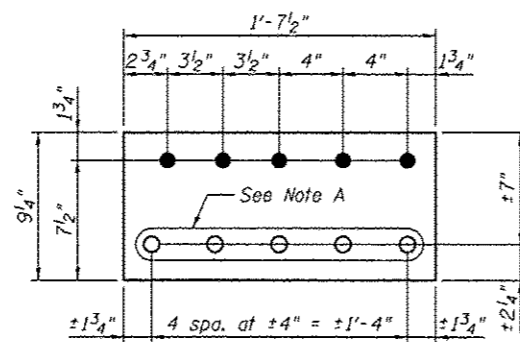
FILL P L6T
 P L 7/8" x 6" x 8 1/2"

INSIDE PLATE AT PANEL POINT L6N AND L6S
(L6'N AND L6'S SIMILAR)
 (Span 9 and Span 11)

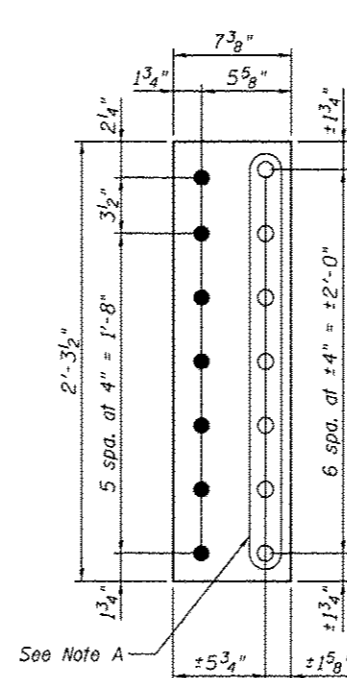
GUSSET PLATE STRENGTHENING



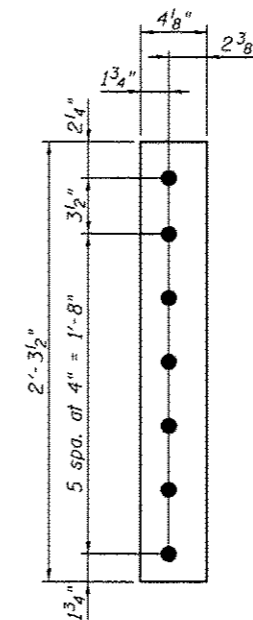
FILL P L6H
 P L 7/8" x 6" x 7 1/4"



REPAIR P L6K
 P L 7/8" x 9 1/4" x 1'-7 1/2"



REPAIR P L6M
 P L 1 1/4" x 7 3/8" x 2'-3 1/2"



FILL P L6P
 P L 1/2" x 4 1/8" x 2'-3 1/2"

Note A:
 Field drill holes using existing holes as template.
 Remainder of holes may be shop or field drilled.

Notes:
 For the Installation Procedure and Bill of Material, see sheet S48.
 For details of pieces, L6F and L6B, see sheet S48.
 For details of pieces, L6J and L6V, see sheet S49A.
 For location and details of lateral connection repair plates, see sheet S49A.
 All bolted connections shown on this sheet shall be made with 1" dia. H.S. bolts unless otherwise noted.
 For inside face of gusset plate, see sheet S8.



USER NAME *	DESIGNED - MEL/YSS	REVISED
	CHECKED - COB	REVISED
PLOT SCALE *	DRAWN - AEC	REVISED
PLOT DATE * 05/09/2014	CHECKED - MEL	REVISED

STATE OF ILLINOIS
 DEPARTMENT OF TRANSPORTATION

MAIN SPAN GUSSET PLATE STRENGTHENING - 4
 S.N. 082-6001 MLK BRIDGE OVER MISSISSIPPI RIVER

SHEET NO. S49 OF S138 SHEETS

F.A.P. RTE.	SECTION	COUNTY	TOTAL SHEETS	SHEET NO.
799	1BR, DRS-2	ST. CLAIR	156	67
CONTRACT NO. 76B03				
ILLINOIS FED. AID PROJECT				