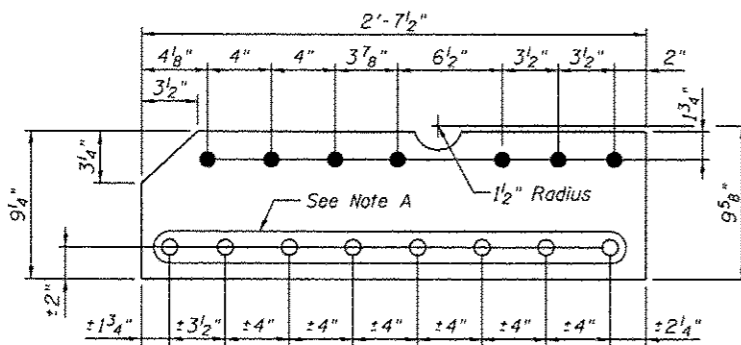


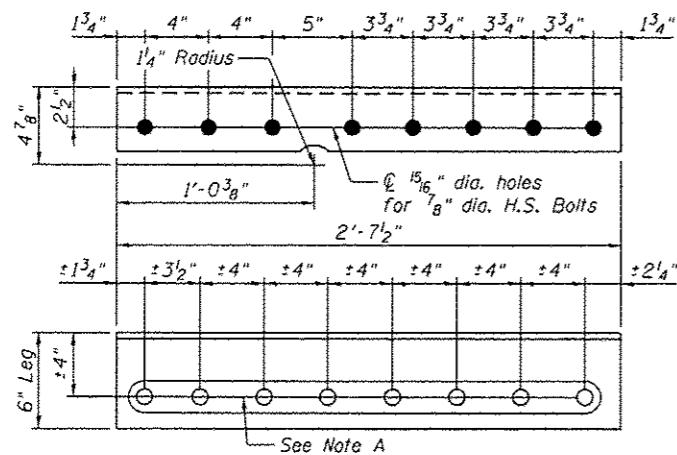
**REPAIR ANGLE LBF**

L6 x 4 x 3/8" x 2'-7"



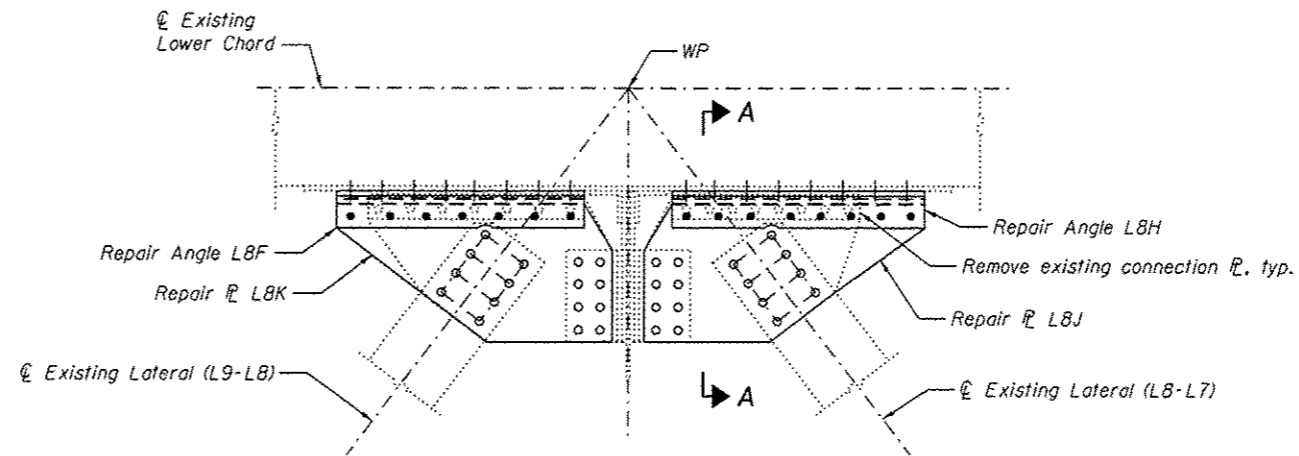
**REPAIR P LBG**

P 5/8" x 9 1/4" x 2'-7 1/2"



**REPAIR ANGLE L8H**

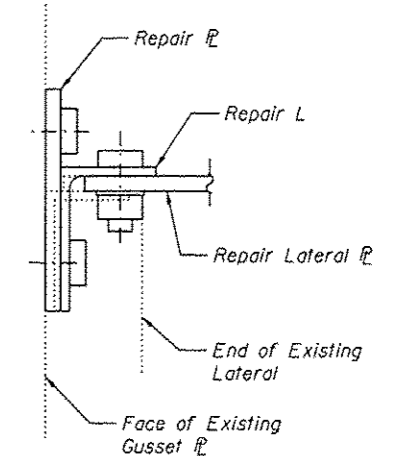
L6 x 4 x 3/8" x 2'-7 1/2"



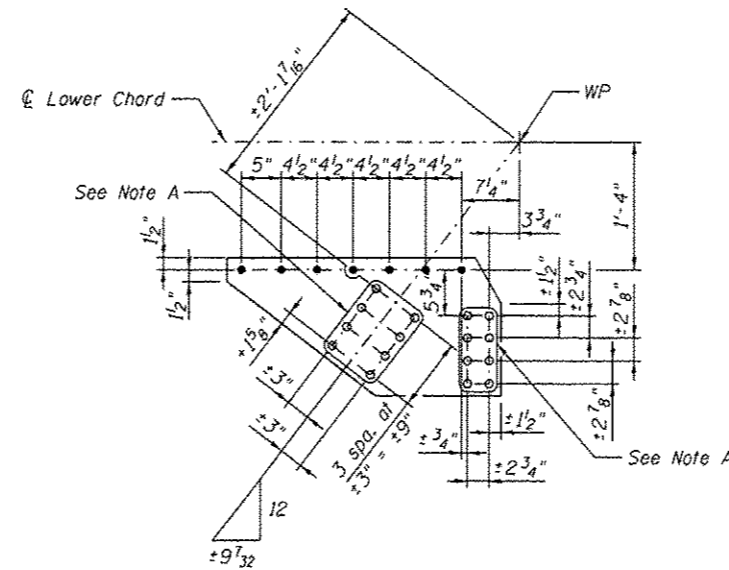
**LOWER LATERAL AT PANEL POINT LBN AND LBS**

(L8'N AND L8'S SIMILAR)

(Span 9 and Span 11)



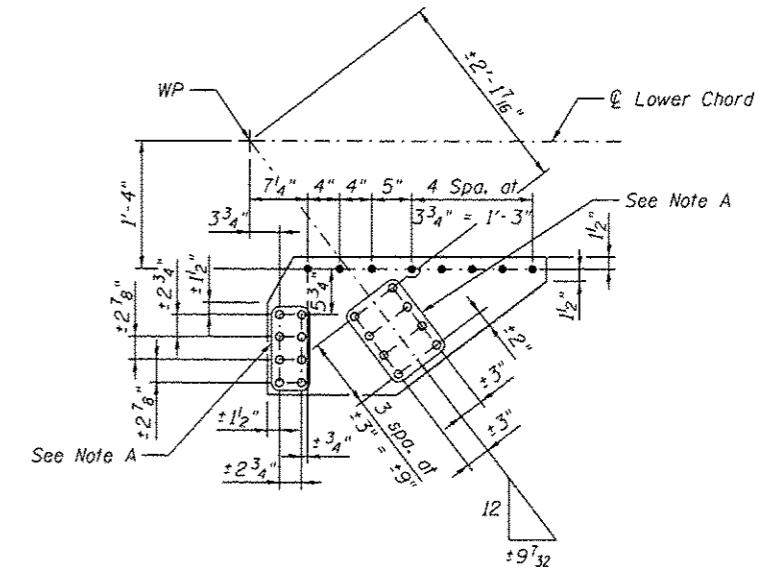
**SECTION A-A**



**REPAIR P L8K**

P 5/8" x 17 1/4" x 2'-10 1/4"

Note: Repair P L8K requires 15/16" φ holes for 7/8" φ H.S. bolts.



**REPAIR P L8J**

P 5/8" x 17 1/4" x 2'-10 3/4"

Note: Repair P L8J requires 15/16" φ holes for 7/8" φ H.S. bolts.

Note A:  
Field drill holes using existing holes as template.  
Remainder of holes may be shop or field drilled.

Notes:  
All bolted connections shown on this sheet shall be made with 1" dia. H.S. bolts unless otherwise noted.  
For locations of pieces L8F, L8G and L8H, see sheet S50.



USER NAME *	DESIGNED - MEL /YSS	REVISED
PLOT SCALE *	CHECKED - CDB	REVISED
PLOT DATE *	DRAWN - AEC	REVISED
	CHECKED - MEL	REVISED

STATE OF ILLINOIS  
DEPARTMENT OF TRANSPORTATION

MAIN SPAN GUSSET PLATE STRENGTHENING - 5A  
S.N. 082-6001 MLK BRIDGE OVER MISSISSIPPI RIVER

SHEET NO. S50A OF S138 SHEETS

F.A.P. RTE.	SECTION	COUNTY	TOTAL SHEETS	SHEET NO.
799	IBR, ORS-2	ST. CLAIR	156	68A
			CONTRACT NO. 76B03	
ILLINOIS FED. AID PROJECT				