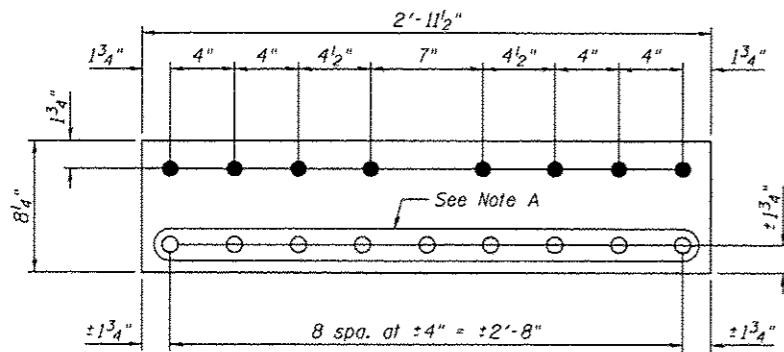
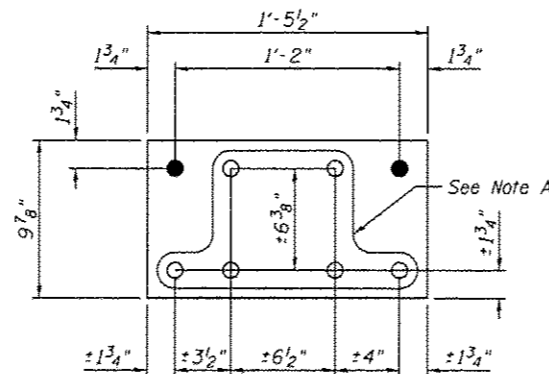


OUTSIDE PLATE AT PANEL POINT L18N AND L18S
 (L18'N AND L18'S SIMILAR)
 (Span 10)

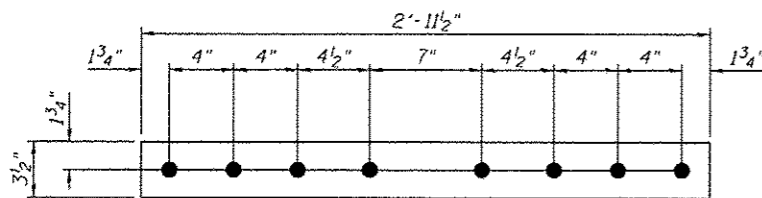
GUSSET PLATE STRENGTHENING



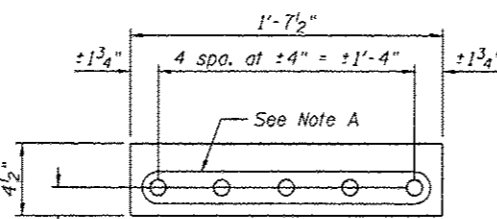
REPAIR P L18A
 P 7/8" x 8 1/4" x 2'-11 1/2"



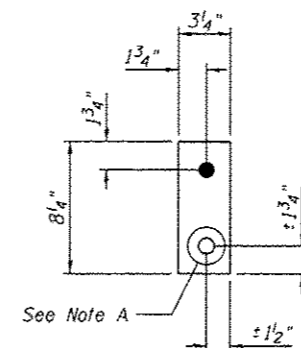
REPAIR P L18C
 P 7/8" x 9 7/8" x 1'-5 1/2"



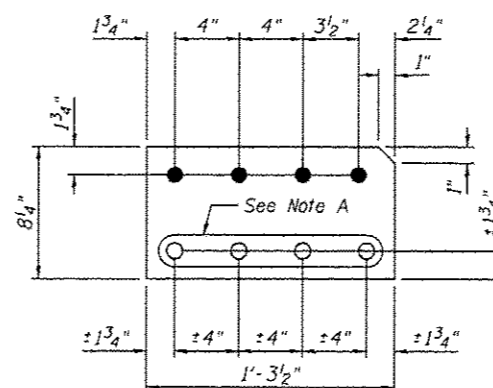
FILL P L18B
 P 3/8" x 3 1/2" x 2'-11 1/2"



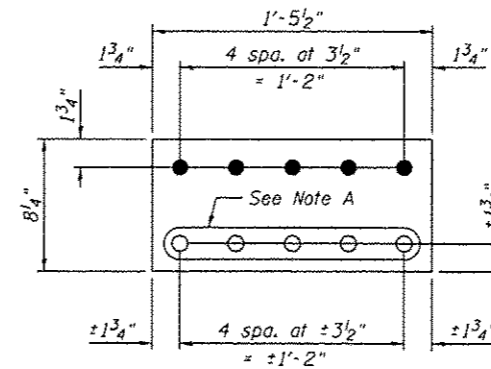
FILL P L18D
 P 3/8" x 4 1/2" x 1'-7 1/2"



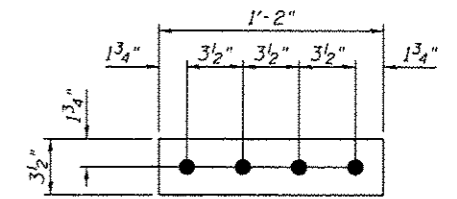
FILL P L18E
 P 1/2" x 3 1/4" x 0'-8 1/4"



REPAIR P L18F
 P 7/8" x 8 1/4" x 1'-3 1/2"



REPAIR P L18G
 P 1/2" x 8 1/4" x 1'-5 1/2"



FILL P L18H
 P 1/2" x 3 1/2" x 1'-2"

Note A:
 Field drill holes using existing holes as template.
 Remainder of holes may be shop or field drilled.

Procedure

Remove the bottom lateral connection plate and angle; then install repair plates, angles and fills, as shown, one side at a time on the inside gusset plate. Install repair plate L18G on the inside gusset plate, followed by the installation of the repair plates, one at a time, on the outside gusset plate.

If additional fasteners need to be removed other than those shown on this sheet, the Contractor shall submit a procedure for review and approval. If needed, the Contractor shall provide temporary support for joints.

BILL OF MATERIAL

| Item | Unit | Total |
|-------------------------|-------|-------|
| Structural Steel Repair | Pound | 3510 |

Notes:
 All bolted connections shown on this sheet shall be made with 1" dia. H.S. bolts unless otherwise noted.
 For L18 inside gusset P, see sheet S54.
 For front face of gusset plate, see sheet S8.



| | | |
|------------------------|----------------------|---------|
| USER NAME = | DESIGNED - MEL / YSS | REVISED |
| | CHECKED - COB | REVISED |
| PLOT SCALE = | DRAWN - AEC | REVISED |
| PLOT DATE = 05/08/2014 | CHECKED - MEL | REVISED |

STATE OF ILLINOIS
 DEPARTMENT OF TRANSPORTATION

MAIN SPAN GUSSET PLATE STRENGTHENING - 8
 S.N. 082-6001 MLK BRIDGE OVER MISSISSIPPI RIVER

SHEET NO. S53 OF S138 SHEETS

| | | | | |
|---------------------------|--------------------|------------------|--------------------|--------------|
| F.A.P. RTE. 799 | SECTION 1BR, DRS-2 | COUNTY ST. CLAIR | TOTAL SHEETS 156 | SHEET NO. 71 |
| | | | CONTRACT NO. 76803 | |
| ILLINOIS FED. AID PROJECT | | | | |