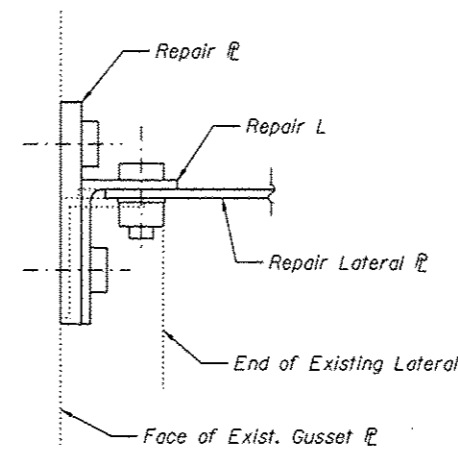
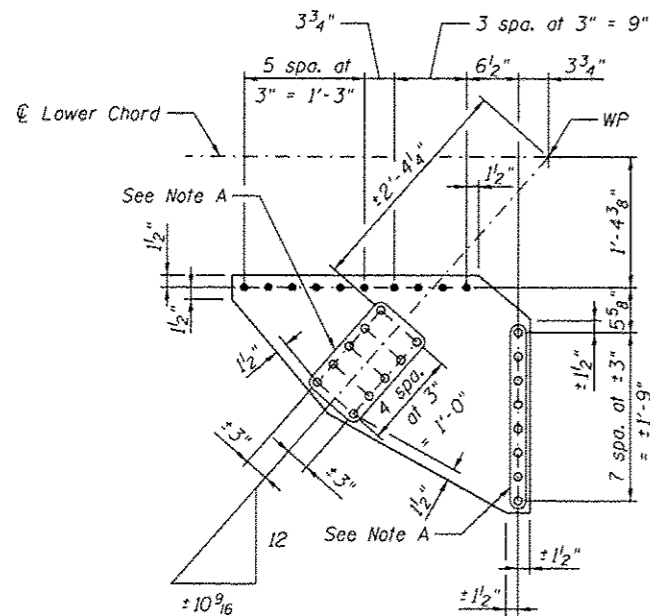


**LOWER LATERAL AT PANEL POINT L18N AND L18S**  
**(L18'N AND L18'S SIMILAR)**  
 (Span 10)



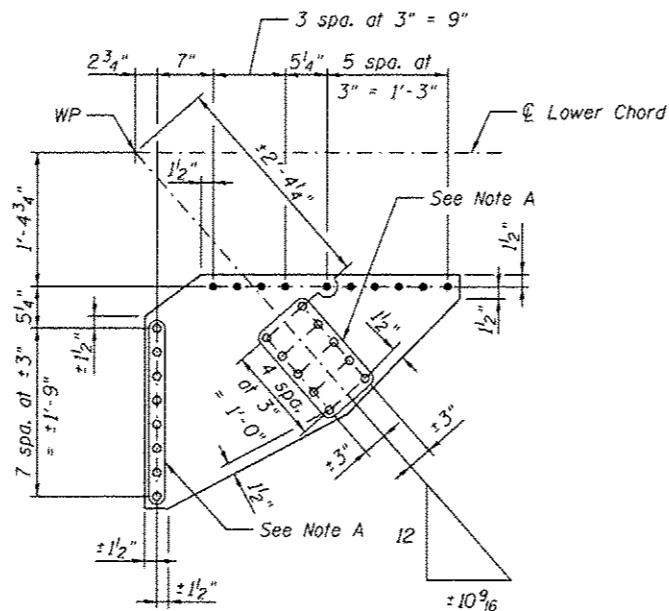
**SECTION A-A**

Note A:  
 Field drill holes using existing holes as template.  
 Remainder of holes may be shop or field drilled.



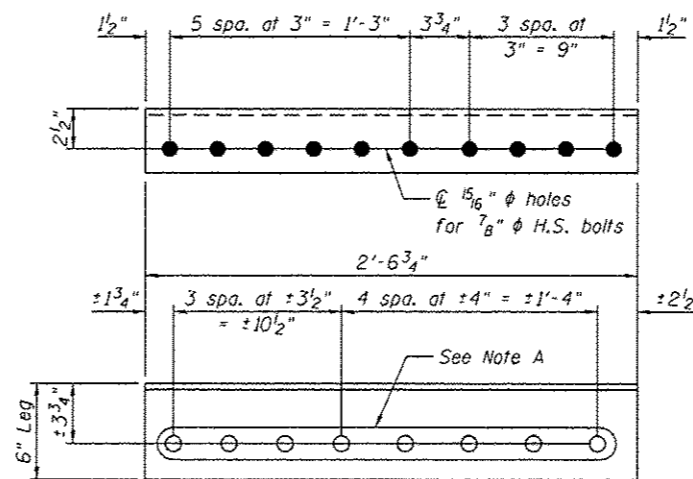
**REPAIR L18R**  
 L 3/8" x 29 5/8" x 3'-1 1/4"

Note: Repair L18R requires  
 15/16"  $\phi$  holes for 7/8"  $\phi$  H.S. bolts.

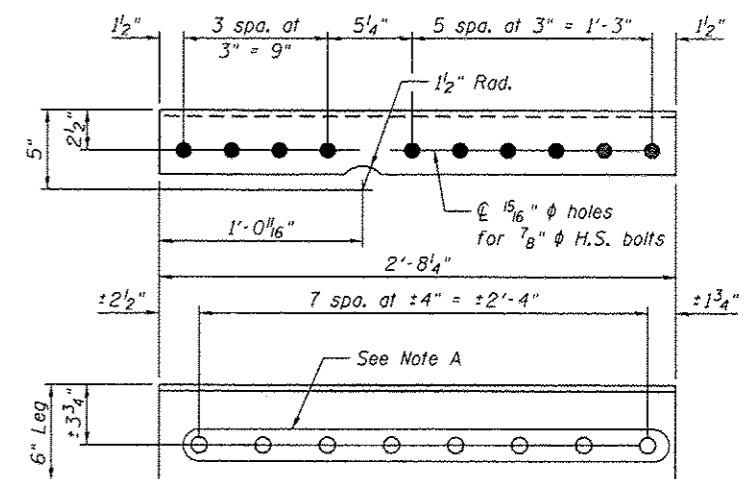


**REPAIR L18V**  
 L 3/8" x 29 1/4" x 3'-3 1/4"

Note: Repair L18V requires  
 15/16"  $\phi$  holes for 7/8"  $\phi$  H.S. bolts.



**REPAIR ANGLE L18T**  
 L6 x 4 x 3/8 x 2'-6 3/4"



**REPAIR ANGLE L18U**  
 L6 x 4 x 3/8 x 2'-8 1/4"

Notes:  
 All bolted connections shown on this sheet shall be  
 made with 1" dia. H.S. bolts unless otherwise noted.



USER NAME =  
 PLOT SCALE =  
 PLOT DATE = 05/09/2014

DESIGNED - MEL /YSS  
 CHECKED - CDB  
 DRAWN - AEC  
 CHECKED - MEL

REVISED  
 REVISED  
 REVISED  
 REVISED

STATE OF ILLINOIS  
 DEPARTMENT OF TRANSPORTATION

MAIN SPAN GUSSET PLATE STRENGTHENING - 9A  
 S.N. 082-6001 MLK BRIDGE OVER MISSISSIPPI RIVER

SHEET NO. 554A OF 513B SHEETS

F.A.P. RTE. 799	SECTION 1BR, BR5-2	COUNTY ST. CLAIR	TOTAL SHEETS 156	SHEET NO. 72A
			CONTRACT NO. 76B03	
ILLINOIS FED. AID PROJECT				