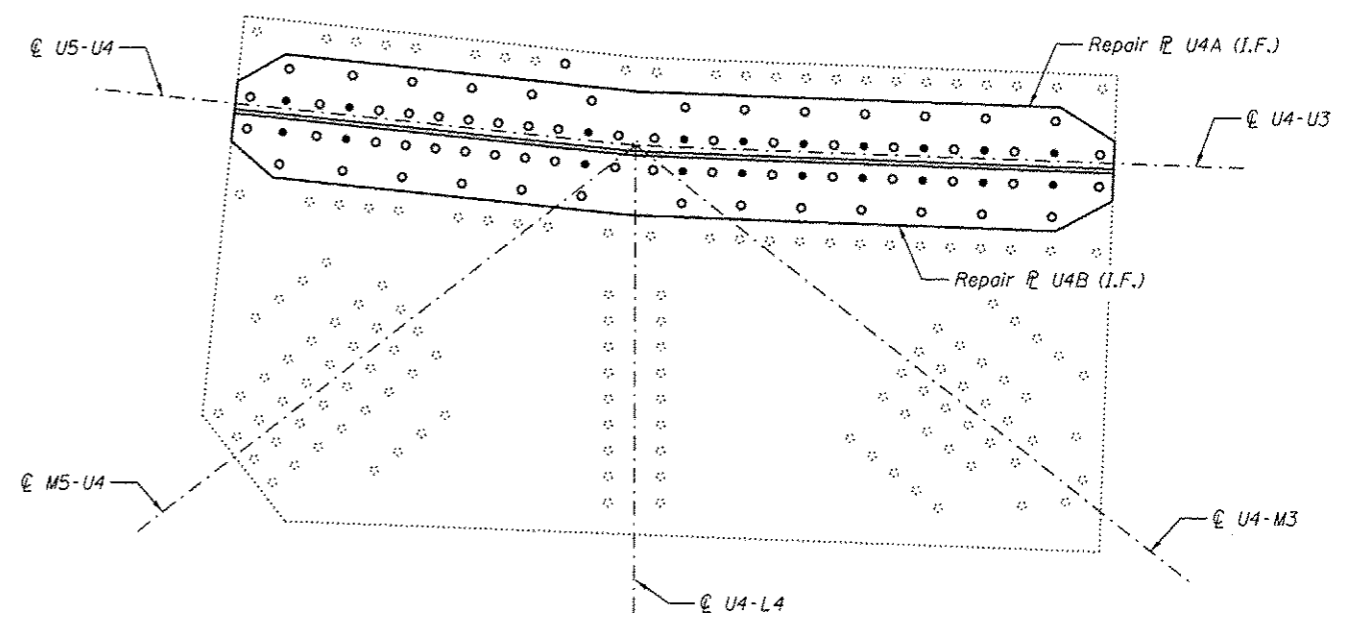
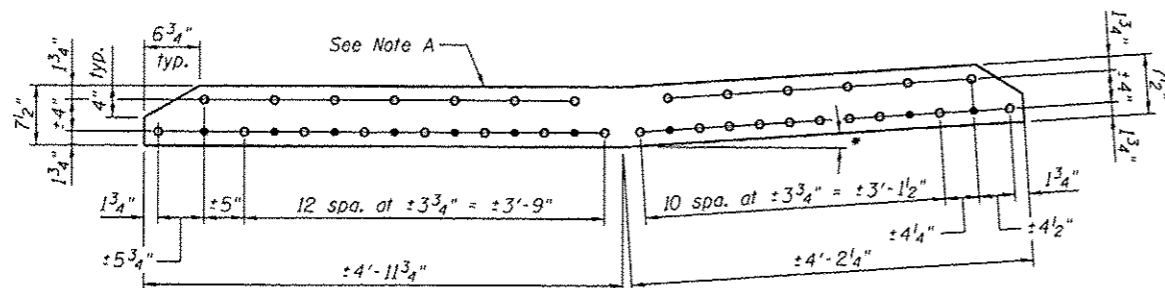


**OUTSIDE PLATE AT PANEL POINT U4N AND U4S**  
 (U4'N AND U4'S SIMILAR)  
 (Span 9 and 11)

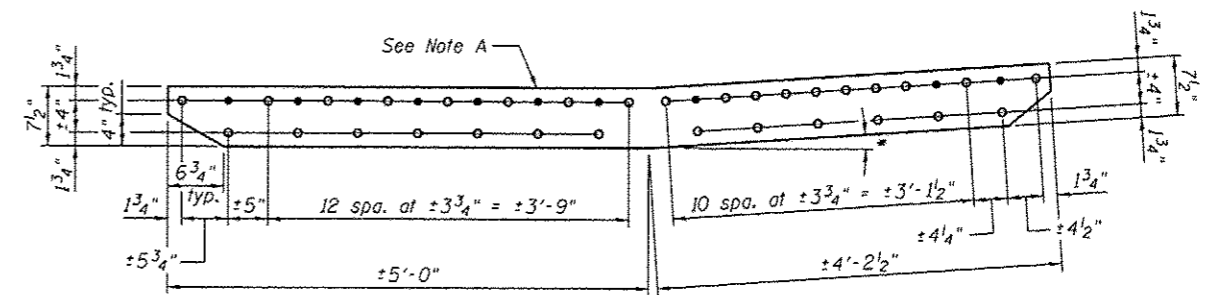


**INSIDE PLATE AT PANEL POINT U4N AND U4S**  
 (U4'N AND U4'S SIMILAR)  
 (Span 9 and 11)

**GUSSET PLATE STRENGTHENING**



**REPAIR P U4A**  
 P 5/8" x 7 1/2" x 9'-2"



**REPAIR P U4B**  
 P 5/8" x 7 1/2" x 9'-2 1/2"

\* To be determined in field

Note A:  
 Field drill holes (○) using existing holes as template.  
 Remainder of holes (●) may be shop or field drilled.

**Procedure:**  
 On the Outside face of the Outside Gusset Plate:  
 Install Repair Plate U4A with 1" Dia. A325 H.S. Bolts.  
 After Repair Plate U4A is installed, install Repair Plate U4B with 1" Dia. A325 H.S. Bolts.  
 Repeat for the Inside Gusset Plate.

**BILL OF MATERIAL**

| Item                    | Unit  | Total |
|-------------------------|-------|-------|
| Structural Steel Repair | Pound | 3,080 |

Note:  
 All bolted connections shown on this sheet shall be made with 1" dia. H.S. bolts unless otherwise noted.  
 For front and inside faces of gusset plates, see truss cross section on sheet S8.