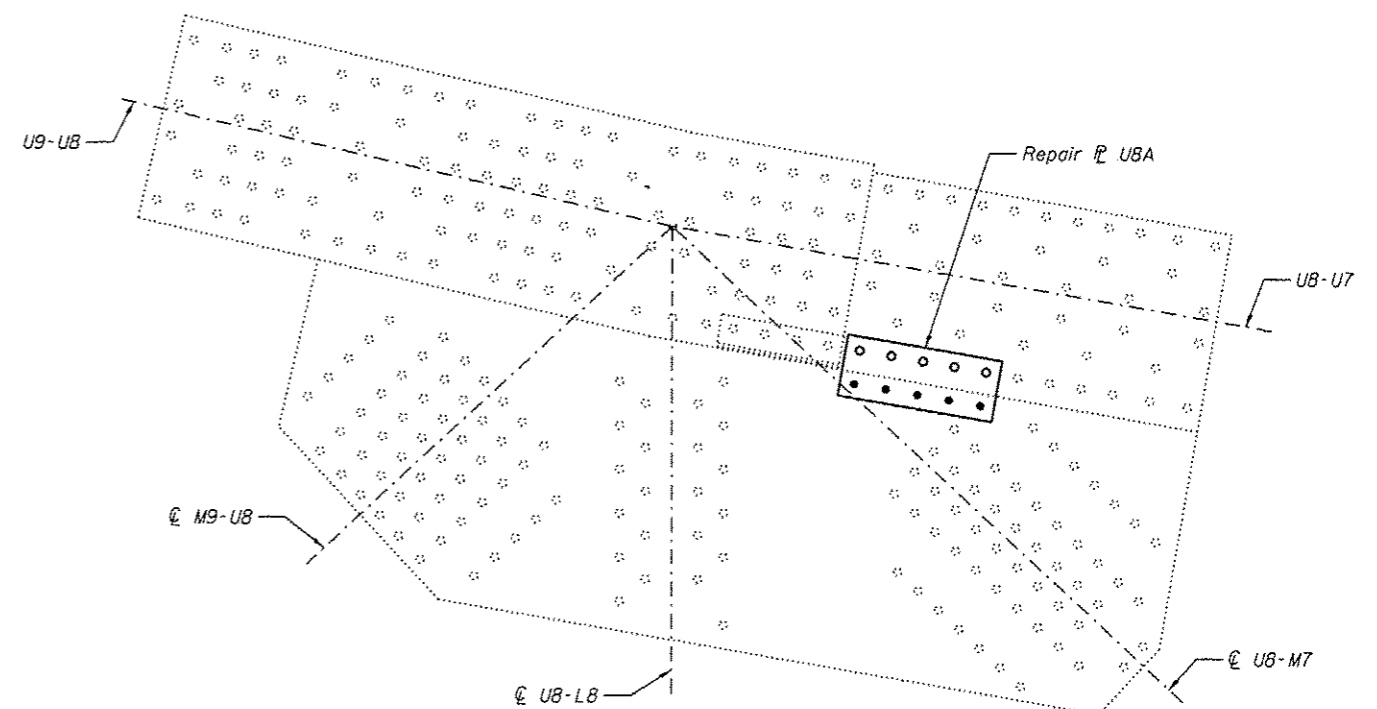
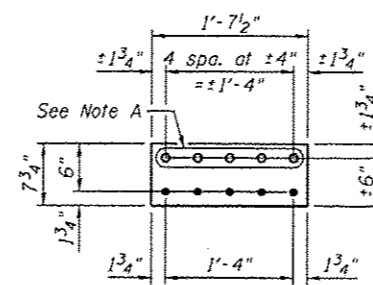


OUTSIDE PLATE AT PANEL POINT UB8N AND UB8S
(UB'N AND UB'S SIMILAR)
 (Span 9 and 11)



INSIDE PLATE AT PANEL POINT UB8N AND UB8S
(UB'N AND UB'S SIMILAR)
 (Span 9 and 11)

GUSSET PLATE STRENGTHENING



REPAIR P UBA
 P 3/4" x 7 3/4" x 1'-7 1/2"

Note A:
 Field drill holes using existing holes as template.
 Remainder of holes may be shop or field drilled.

Procedure:
 Install repair plates one at a time.

BILL OF MATERIAL

Item	Unit	Total
Structural Steel Repair	Pound	360

Note:
 All bolted connections shown on this sheet shall be made with 1" dia. H.S. bolts unless otherwise noted.



USER NAME :	DESIGNED - MEL	REVISED
	CHECKED - CDB	REVISED
PLOT SCALE :	DRAWN - PRC	REVISED
PLOT DATE : 05/02/2014	CHECKED - MEL	REVISED

STATE OF ILLINOIS
DEPARTMENT OF TRANSPORTATION

MAIN SPANS GUSSET PLATE STRENGTHENING - 12
S.N. 082-6001 MLK BRIDGE OVER MISSISSIPPI RIVER

SHEET NO. S57 OF S138 SHEETS

F.A.P. RTE.	SECTION	COUNTY	TOTAL SHEETS	SHEET NO.
799	1BR, DRS-2	ST. CLAIR	156	75
CONTRACT NO. 76B03				
ILLINOIS FED. AID PROJECT				