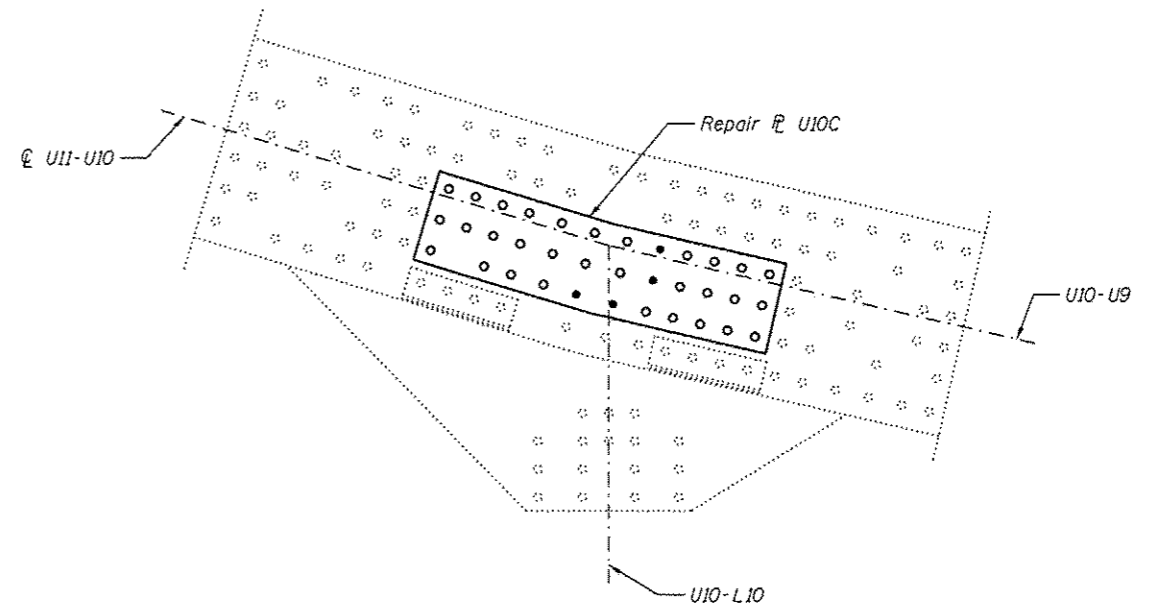
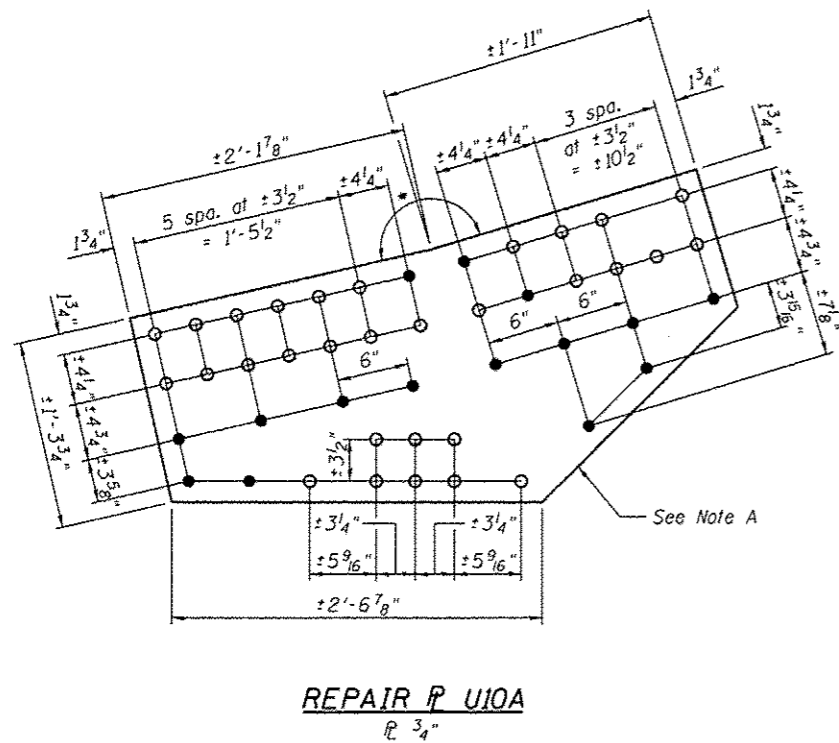


OUTSIDE PLATE AT PANEL POINT U10N AND U10S
(U10'N AND U10'S SIMILAR)
 (Span 9 and 11)



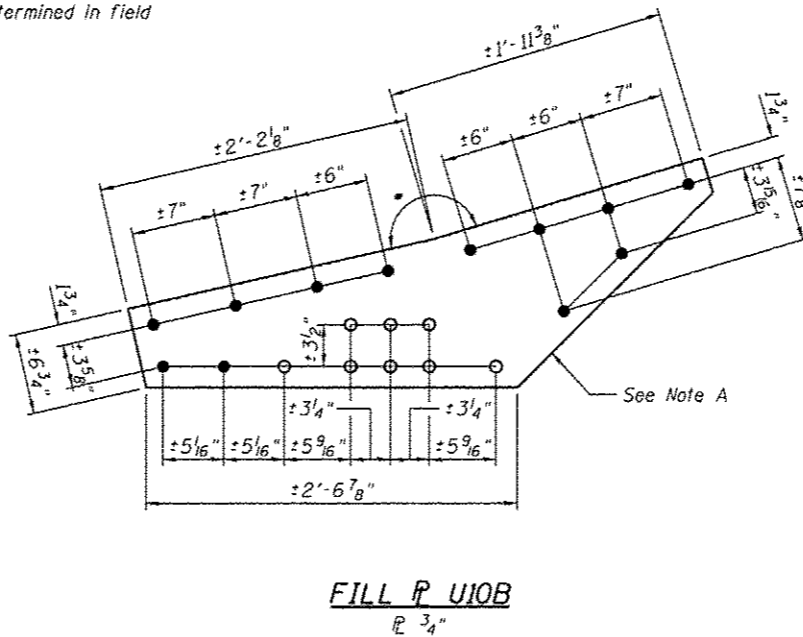
INSIDE PLATE AT PANEL POINT U10N AND U10S
(U10'N AND U10'S SIMILAR)
 (Span 9 and 11)

GUSSET PLATE STRENGTHENING

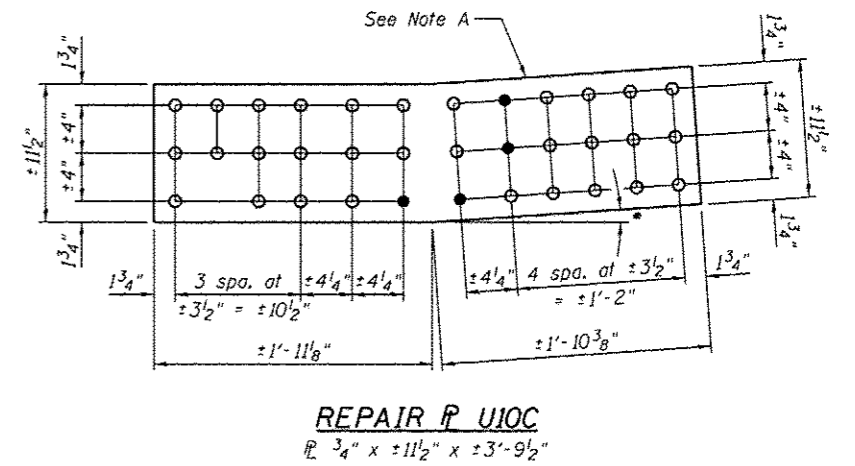


REPAIR P U10A
 P 3/4"

* To be determined in field



FILL P U10B
 P 3/4"



REPAIR P U10C
 P 3/4" x ±11 1/2" x ±3'-9 1/2"

Procedure:
 Install repair plates one at a time.

BILL OF MATERIAL

Item	Unit	Total
Structural Steel Repair	Pound	2,030

Note A:
 Field drill holes (○) using existing holes as template.
 Remainder of holes (●) may be shop or field drilled.

Note:
 All bolted connections shown on this sheet shall be made with 1" dia. H.S. bolts unless otherwise noted.



USER NAME *	DESIGNED - MEL	REVISED
PLOT SCALE *	CHECKED - CDB	REVISED
PLOT DATE * 05/02/2014	DRAWN - PRC	REVISED
	CHECKED - MEL	REVISED

STATE OF ILLINOIS
DEPARTMENT OF TRANSPORTATION

MAIN SPANS GUSSET PLATE STRENGTHENING - 13
S.N. 082-6001 MLK BRIDGE OVER MISSISSIPPI RIVER

SHEET NO. S58 OF S138 SHEETS

F.A.P. RTE.	SECTION	COUNTY	TOTAL SHEETS	SHEET NO.
799	IBR, DRS-2	ST. CLAIR	156	76
ILLINOIS FED. AID PROJECT			CONTRACT NO. 76B03	