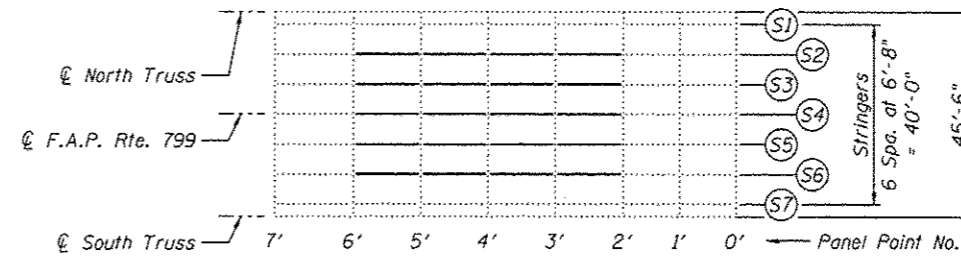
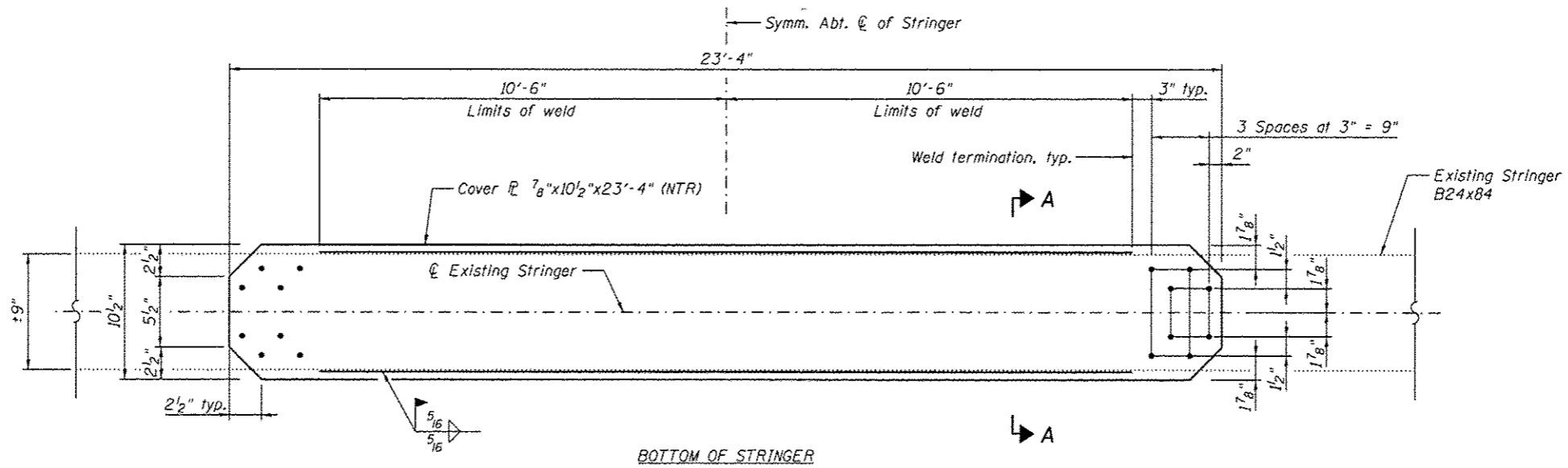


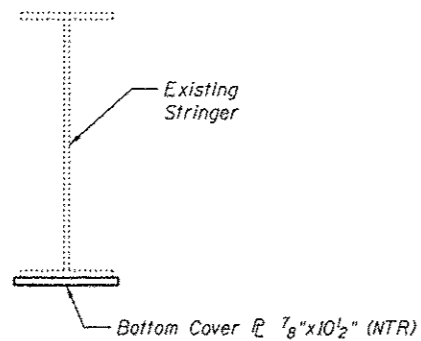
PARTIAL PLAN - SPAN 9



PARTIAL PLAN - SPAN 11



**SPAN 9 AND SPAN 11 STRINGER STRENGTHENING
PANELS PP2-PP6 AND PP2'-PP6'
(40 Locations)**



SECTION A-A

BILL OF MATERIAL

Item	Unit	Total
Structural Steel Repair	Pound	30,210

Note:
Load carrying components designed "NTR" shall conform to the Impact Testing Requirement, Zone 2.



USER NAME *	DESIGNED - MEL	REVISED
	CHECKED - COB	REVISED
PLOT SCALE *	DRAWN - AEC	REVISED
PLOT DATE * 05/02/2014	CHECKED - MEL	REVISED

**STATE OF ILLINOIS
DEPARTMENT OF TRANSPORTATION**

**MAIN SPAN STRINGER STRENGTHENING PP2-PP6 AND PP2'-PP6'
S.N. 082-6001 MLK BRIDGE OVER MISSISSIPPI RIVER**

SHEET NO. S61 OF S13B SHEETS

F.A.P. RTE.	SECTION	COUNTY	TOTAL SHEETS	SHEET NO.
799	1BR. DRS-2	ST. CLAIR	156	79
				CONTRACT NO. 76B03
ILLINOIS FED. AID PROJECT				