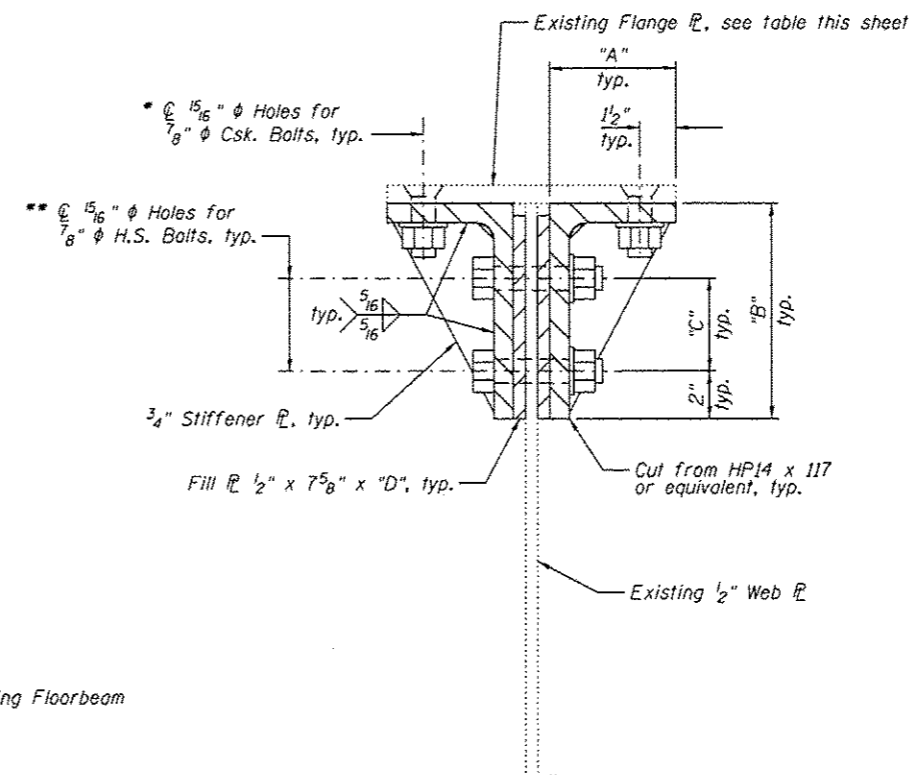
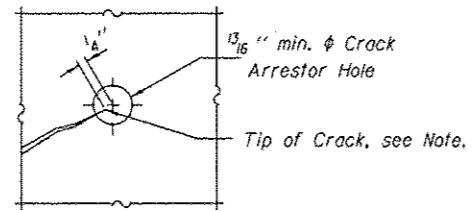


**ELEVATION VIEW - END OF FLOORBEAM**  
(Required each end of floorbeam)



**SECTION A-A**

- \* Drill countersunk holes in floorbeam flange
- \*\* Drill holes in floorbeam web, where applicable



**CRACK ARRESTOR HOLE DETAIL**

Note: Locate crack tip using liquid dye penetrant or magnetic particle testing. Drill 1 3/16 inch min. diameter Crack Arrestor hole at the crack tip. After crack arrestor hole has been drilled, dye penetrant or magnetic particle testing shall be used to verify that the drilled hole has captured the crack tip. Cost shall be included with Structural Steel Repair.

**FLOORBEAM RETROFIT - GRID DECK**

LOCATION	DIMENSION				EXISTING TOP FLG.
	"A"	"B"	"C"	"D"	
FB17 & FB17'	7 1/4"	8 1/4"	3 7/8"	7 3/4"	16" x 1 1/2"
FB20, FB22, FB25, FB20', FB22' & FB25'	7 1/4"	8 3/4"	3 7/8"	8 1/4"	16" x 1"

Notes:  
Install floorbeam retrofit during grid deck replacement to facilitate access to the floorbeam flange.  
All webs shall be checked for cracks and arrestor holes drilled before plates added.  
Countersunk fasteners shall be galvanized ASTM A449.

**BILL OF MATERIAL**

Item	Unit	Total
Structural Steel Repair	Pound	4180



USER NAME *	DESIGNED - PRC	REVISED
	CHECKED - CDB	REVISED
PLOT SCALE *	DRAWN - PRC	REVISED
PLOT DATE * 05/02/2014	CHECKED - CDB	REVISED

**STATE OF ILLINOIS**  
**DEPARTMENT OF TRANSPORTATION**

**MAIN SPANS FLOORBEAM RETROFIT DETAILS - 1**  
**S.N. 082-6001 MLK BRIDGE OVER MISSISSIPPI RIVER**

SHEET NO. S62 OF S138 SHEETS

F.A.P. RTE.	SECTION	COUNTY	TOTAL SHEETS	SHEET NO.
799	1BR, ORS-2	ST. CLAIR	156	80
CONTRACT NO. 76B03			ILLINOIS FED. AID PROJECT	