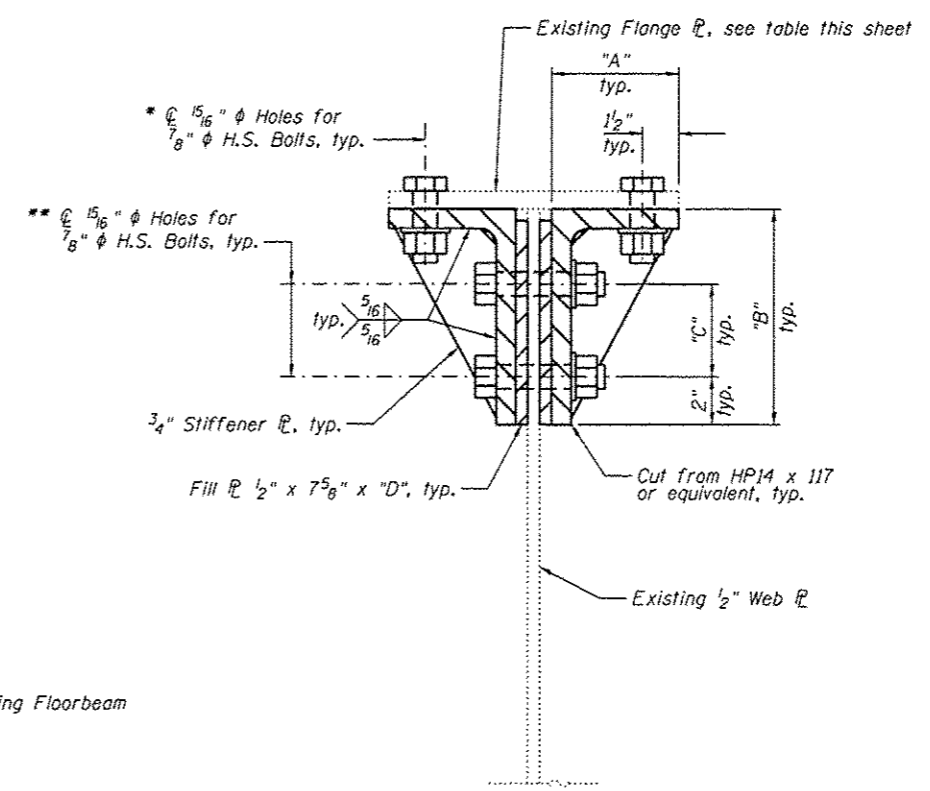
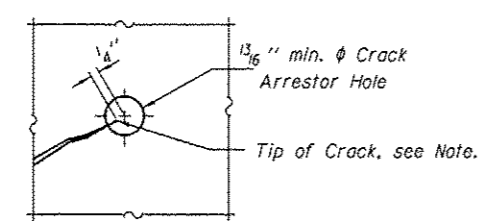


ELEVATION VIEW - END OF FLOORBEAM
(Required each end of floorbeam)



SECTION A-A

- * Drill holes in floorbeam flange
- ** Drill holes in floorbeam web, where applicable



CRACK ARRESTOR HOLE DETAIL

Note: Locate crack tip using liquid dye penetrant or magnetic particle testing. Drill 1 3/16 inch min. phi Crack Arrestor hole at the crack tip. After crack arrestor hole has been drilled, dye penetrant or magnetic particle testing shall be used to verify that the drilled hole has captured the crack tip. Cost shall be included with Structural Steel Repair.

FLOORBEAM RETROFIT - CONCRETE DECK

LOCATION	DIMENSION				EXISTING TOP FLG.
	"A"	"B"	"C"	"D"	
FB14 & FB14'	5 1/4"	9"	3 7/8"	8 1/2"	12" x 3/4"
FBB'	7 1/4"	8"	3 3/4"	7 1/2"	16" x 1 1/2"

Notes:
All webs shall be checked for cracks and arrestor holes drilled before plates added.
For concrete deck removal details, see sheets S28 and S29.

BILL OF MATERIAL

Item	Unit	Total
Structural Steel Repair	Pound	1540



USER NAME *	DESIGNED - PRC	REVISED
	CHECKED - CDB	REVISED
PLOT SCALE *	DRAWN - PRC	REVISED
PLOT DATE * 05/02/2014	CHECKED - CDB	REVISED

STATE OF ILLINOIS
DEPARTMENT OF TRANSPORTATION

MAIN SPANS FLOORBEAM RETROFIT DETAILS - 2
S.N. 082-6001 MLK BRIDGE OVER MISSISSIPPI RIVER

SHEET NO. 563 OF 5138 SHEETS

F.A.P. RTE. 799	SECTION IBR, DRS-2	COUNTY ST. CLAIR	TOTAL SHEETS 156	SHEET NO. 81
ILLINOIS FED. AID PROJECT				CONTRACT NO. 76B03