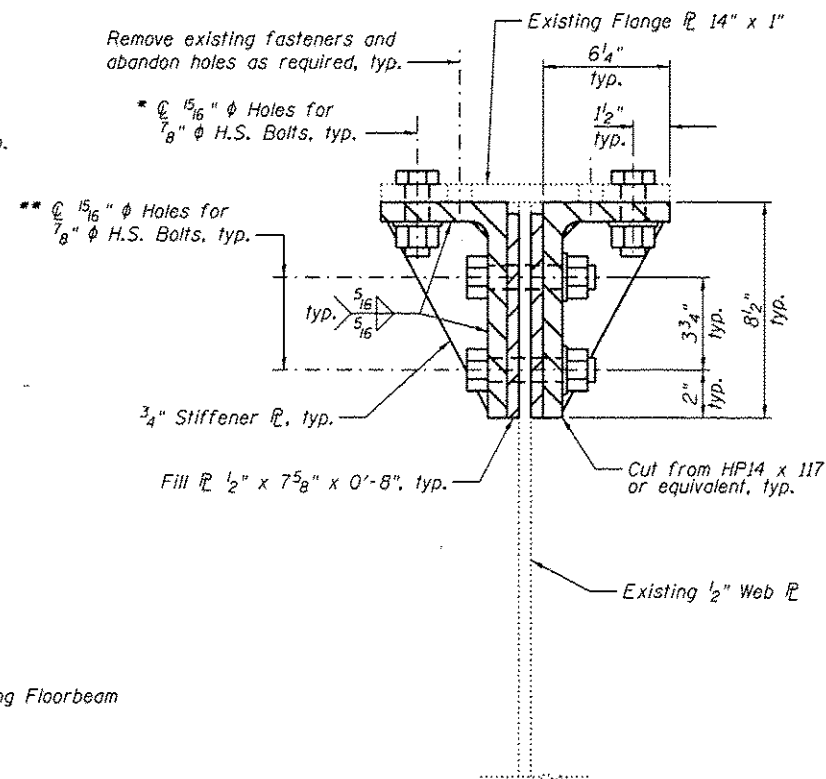
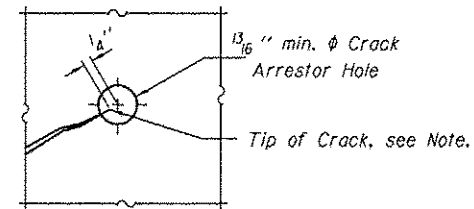


ELEVATION VIEW - END OF FLOORBEAM FBO'
(Required each end of floorbeam)



SECTION A-A

- * Drill holes in floorbeam flange
- ** Drill holes in floorbeam web, where applicable



CRACK ARRESTOR HOLE DETAIL

Note: Locate crack tip using liquid dye penetrant or magnetic particle testing. Drill 13/16\"/>

Notes:
The web shall be checked for cracks and arrestor holes drilled before plates added.
For finger plate expansion joint removal and resetting, see sheet S101.
Fill abandoned holes with tight fitting steel plug coated with epoxy and grind smooth.

BILL OF MATERIAL

Item	Unit	Total
Structural Steel Repair	Pound	520



USER NAME :	DESIGNED - PRC	REVISED
	CHECKED - CDB	REVISED
PLOT SCALE :	DRAWN - PRC	REVISED
PLOT DATE : 05/02/2014	CHECKED - CDB	REVISED

STATE OF ILLINOIS
DEPARTMENT OF TRANSPORTATION

MAIN SPANS FLOORBEAM RETROFIT DETAILS - 3
S.N. 082-6001 MLK BRIDGE OVER MISSISSIPPI RIVER

F.A.P. RTE.	SECTION	COUNTY	TOTAL SHEETS	SHEET NO.
799	IBR, DRS-2	ST. CLAIR	156	82
ILLINOIS FED. AID PROJECT			CONTRACT NO. 76B03	

SHEET NO. S64 OF S138 SHEETS