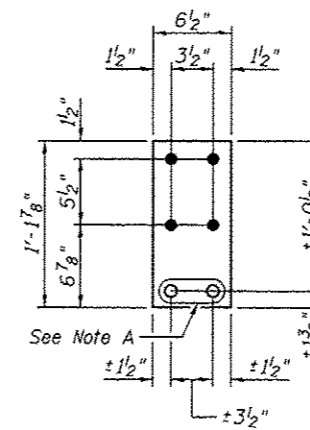


**SOUTH END AT PANEL POINT L4'**  
**WEST FACE**  
(Span 11)

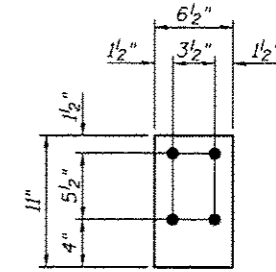
**SOUTH END AT PANEL POINT L4'**  
**EAST FACE**  
(Span 11)

**FLOORBEAM WEB REPAIRS**

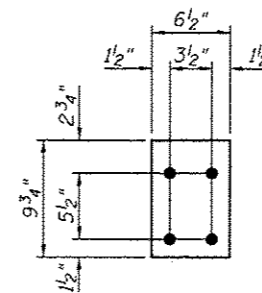
Note A:  
Field drill holes using existing holes as template.  
Remainder of holes may be shop or field drilled.



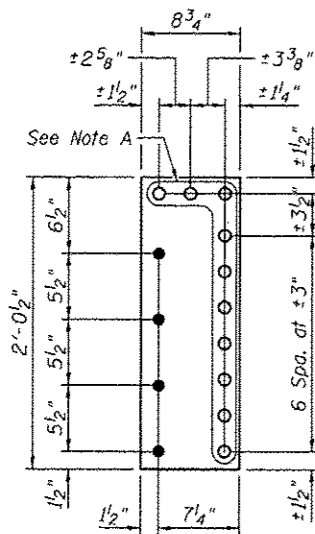
**REPAIR P F13**  
P 3/8" x 6 1/2" x 1'-1 7/8"



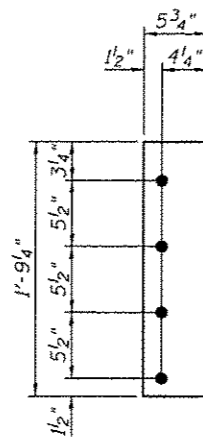
**FILL P H13**  
P 5/16" x 6 1/2" x 0'-11"



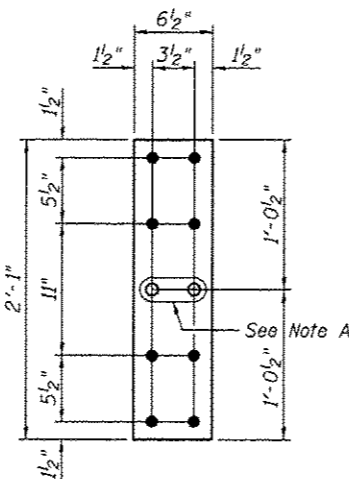
**REPAIR P G13**  
P 3/8" x 6 1/2" x 0'-9 3/4"



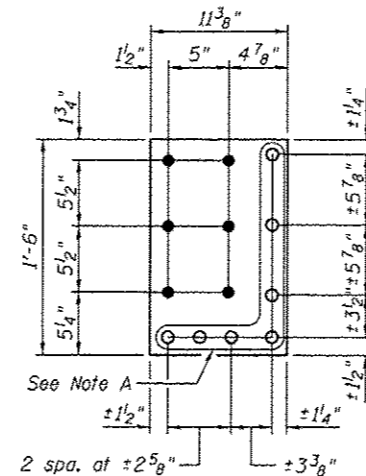
**REPAIR P A13**  
P 3/8" x 8 3/4" x 2'-0 1/2"



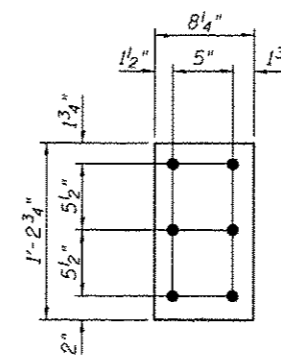
**FILL P B13**  
P 9/16" x 5 3/4" x 1'-9 1/4"



**REPAIR P C13**  
P 3/8" x 6 1/2" x 2'-1"



**REPAIR P D13**  
P 3/8" x 11 3/8" x 1'-6"



**FILL P E13**  
P 9/16" x 8 1/4" x 1'-2 3/4"

**BILL OF MATERIAL**

Item	Unit	Total
Structural Steel Repair	Pound	250



USER NAME =	DESIGNED - PRC	REVISED
PLOT SCALE =	CHECKED - CDB	REVISED
PLOT DATE = 03/28/2014	DRAWN - PRC	REVISED
	CHECKED - CDB	REVISED

STATE OF ILLINOIS  
DEPARTMENT OF TRANSPORTATION

MAIN SPANS FLOORBEAM WEB REPAIRS - 13  
S.N. 082-6001 MLK BRIDGE OVER MISSISSIPPI RIVER

SHEET NO. 577 OF 5138 SHEETS

F.A.P. RTE.	SECTION	COUNTY	TOTAL SHEETS	SHEET NO.
799	1BR, DRS-2	ST. CLAIR	156	95
			CONTRACT NO. 76B03	
[ILLINOIS] FED. AID PROJECT				