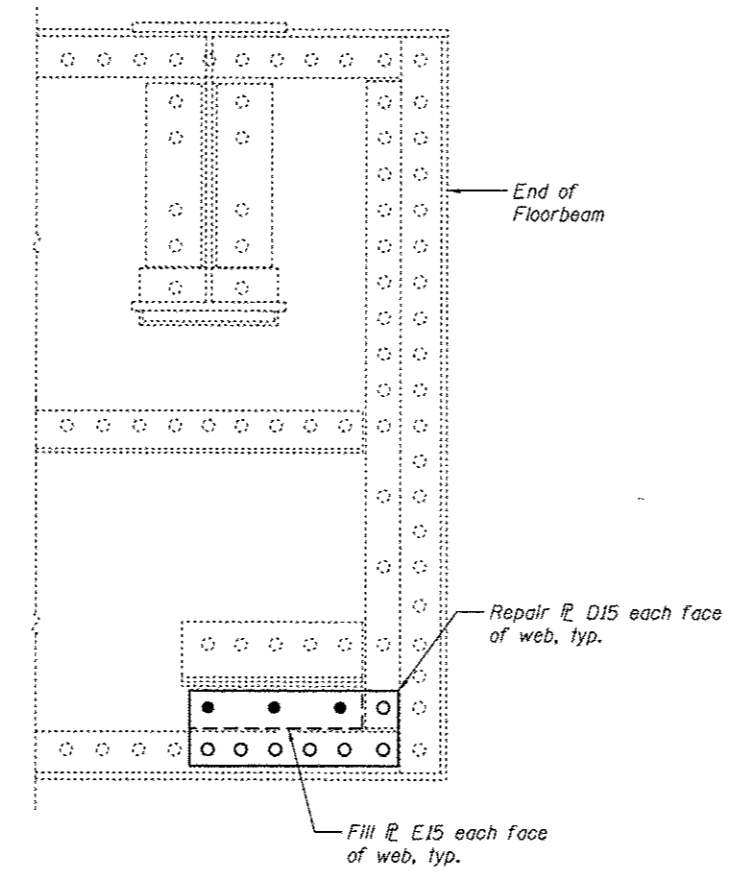
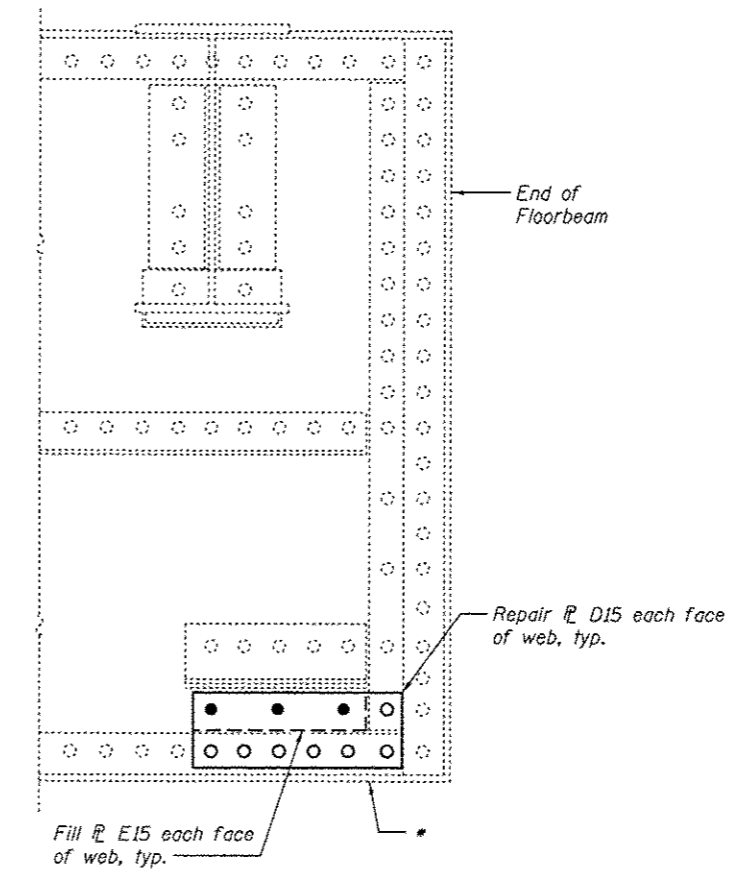


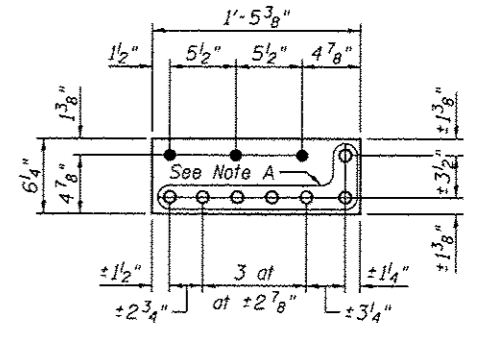
NORTH END AT PANEL POINT L24
East face shown
(Span 10)



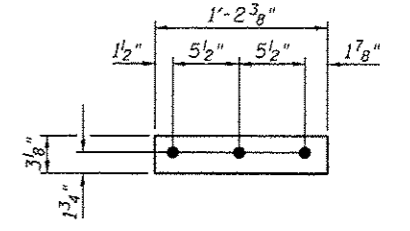
SOUTH END AT PANEL POINT L23*
West face shown
(Span 10)



NORTH END AT PANEL POINT L23
East face shown
(Span 10)



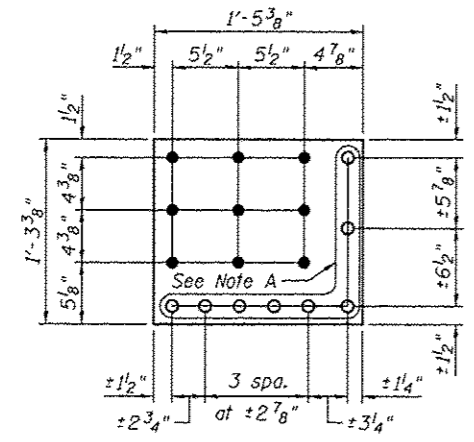
REPAIR # D15
3/8" x 6 1/4" x 1'-5 3/8"



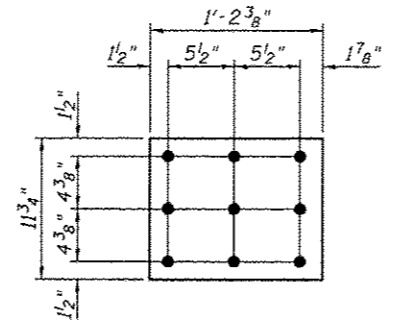
FILL # E15
9/16" x 3 3/8" x 1'-2 3/8"

FLOORBEAM WEB REPAIRS

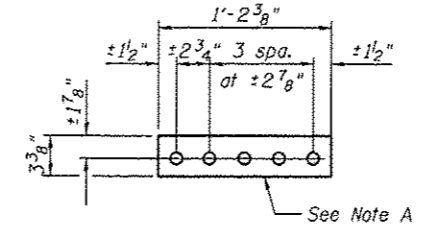
* Remove delamination from bottom angle of floorbeam 23, north end. Grind smooth to an ANSI 250 finish. Cost included with Structural Steel Repair.



REPAIR # A15
3/8" x 15 3/8" x 1'-5 3/8"



FILL # B15
9/16" x 11 3/4" x 1'-2 3/8"



FILL # C15
3/16" x 3 3/8" x 1'-2 3/8"

Note A:
Field drill holes using existing holes as template. Remainder of holes may be shop or field drilled.

BILL OF MATERIAL

Item	Unit	Total
Structural Steel Repair	Pound	230



USER NAME =	DESIGNED - PRC	REVISED
PLOT SCALE =	CHECKED - CDB	REVISED
PLOT DATE = 03/20/2014	DRAWN - PRC	REVISED
	CHECKED - CDB	REVISED

STATE OF ILLINOIS
DEPARTMENT OF TRANSPORTATION

MAIN SPANS FLOORBEAM WEB REPAIRS - 15
S.N. 082-6001 MLK BRIDGE OVER MISSISSIPPI RIVER

SHEET NO. 579 OF 5138 SHEETS

F.A.P. RTE.	SECTION	COUNTY	TOTAL SHEETS	SHEET NO.
799	IBR, DRS-2	ST. CLAIR	156	97
CONTRACT NO. 76B03				
ILLINOIS FED. AID PROJECT				