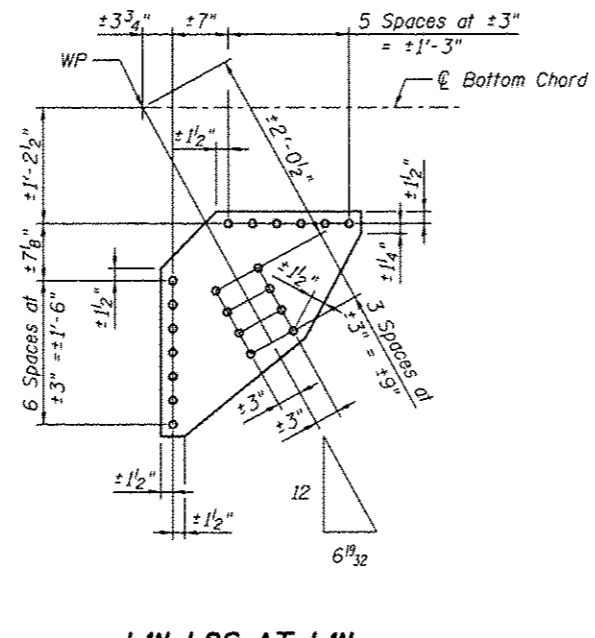


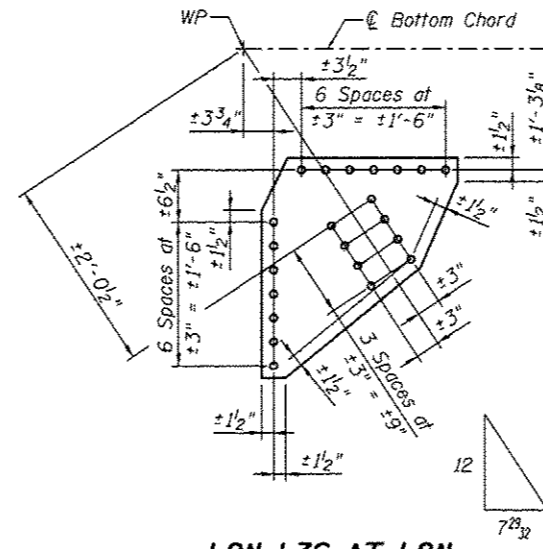
**LOS-LIN AT LOS**

PL 3/8 x 21 1/2" x 3'-7"



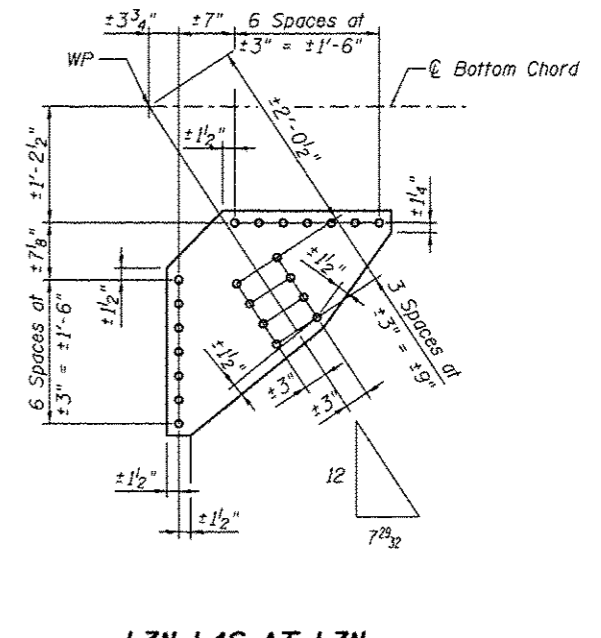
**LIN-L2S AT LIN**

PL 3/8 x 28 1/4" x 2'-1"



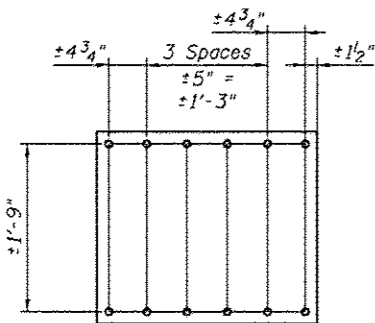
**L2N-L3S AT L2N**

PL 3/8 x 27 1/2" x 2'-0 1/2"



**L3N-L4S AT L3N**

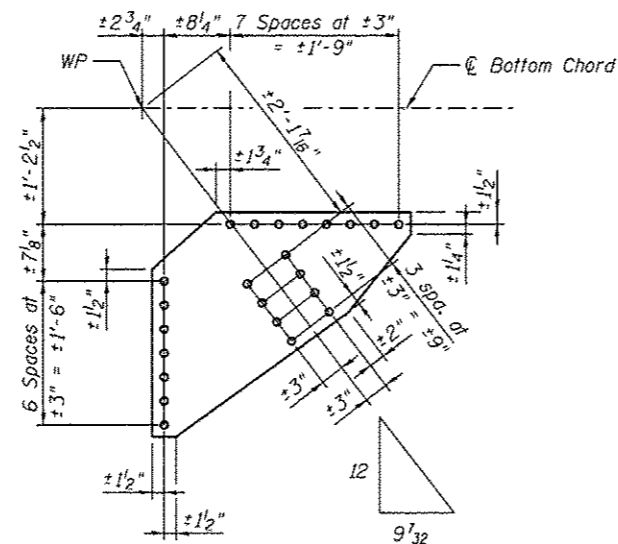
PL 3/8 x 28 1/4" x 2'-4"



**L4N-L5S AT L5S**

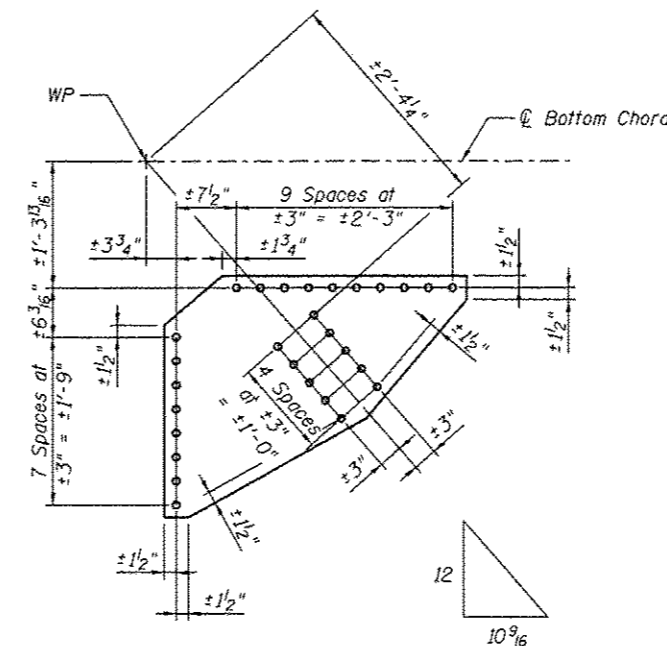
**L5N-L6S AT L6S**

PL 3/8 x 27 1/2" x 2'-0"



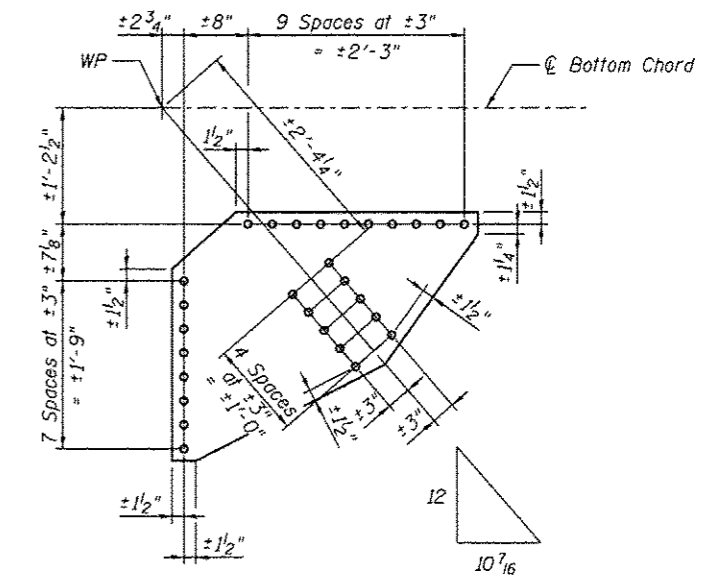
**L6N-L7S AT L7S**

PL 3/8 x 28 1/4" x 2'-8 1/2"



**L10S-L11N AT L10S**

PL 3/8 x 30 1/4" x 3'-1 3/4"



**L12N-L13S AT L13S**

PL 3/8 x 31 1/4" x 3'-2"

**BILL OF MATERIAL**

Item	Unit	Total
Structural Steel Repair	Pound	760

Note:  
Field drill holes using existing holes as template.



USER NAME =	DESIGNED - CDB	REVISED
PLOT SCALE =	CHECKED - AEC	REVISED
PLOT DATE = 03/28/2014	DRAWN - AEC	REVISED
	CHECKED - CDB	REVISED

STATE OF ILLINOIS  
DEPARTMENT OF TRANSPORTATION

MAIN SPAN BOTTOM LATERAL CONNECTION PLATE REPLACEMENTS - 1  
S.N.082-6001 MLK BRIDGE OVER MISSISSIPPI RIVER

SHEET NO. 580 OF 5138 SHEETS

F.A.P. RTE. 799	SECTION 1BR, DRS-2	COUNTY ST. CLAIR	TOTAL SHEETS 156	SHEET NO. 98
			CONTRACT NO. 76B03	
ILLINOIS FED. AID PROJECT				