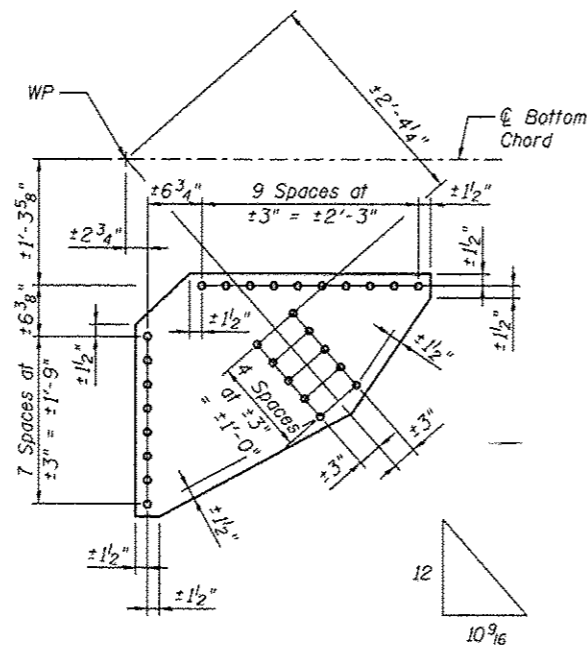
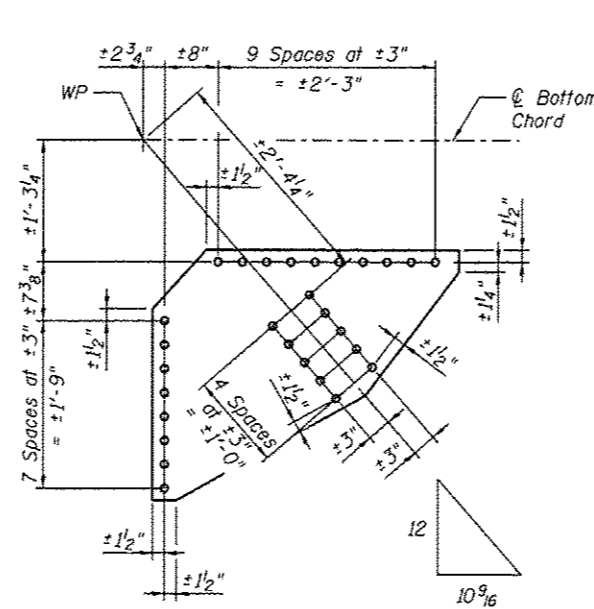


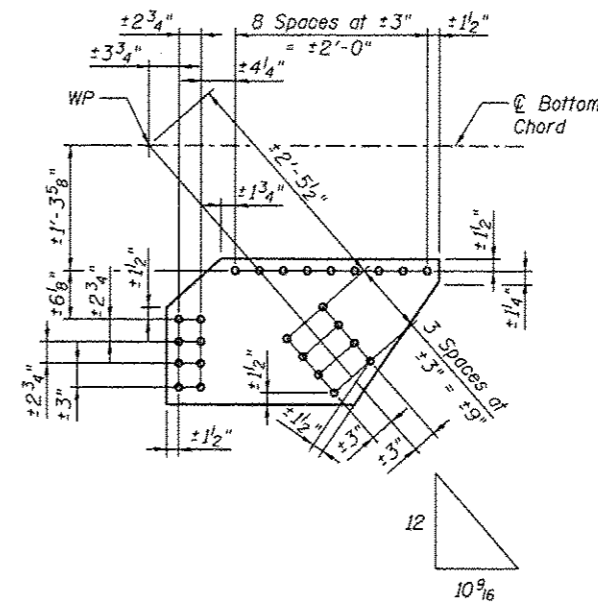
L15N-L16S AT L16S
L16'N-L15'S AT L16'N
 $\varnothing \frac{3}{8} \times 30\frac{1}{2} \times 3'-0\frac{3}{4}$



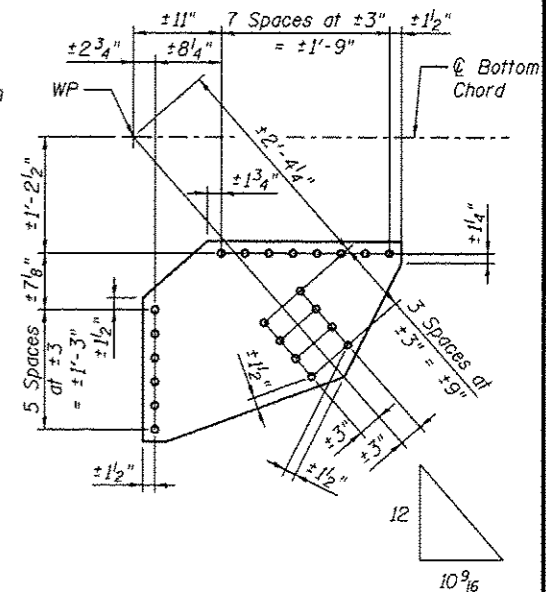
L17N-L18S AT L18S
L18'N-L17'S AT L18'N
 $\varnothing \frac{3}{8} \times 30\frac{1}{2} \times 3'-0\frac{3}{4}$



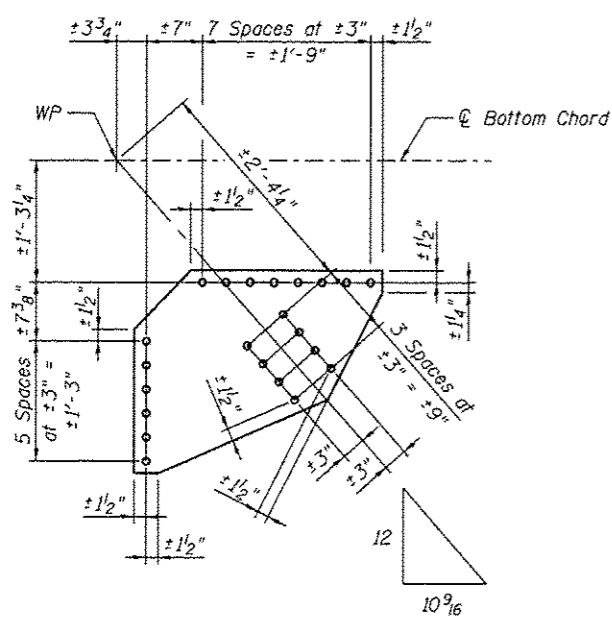
L18N-L19S AT L19S
 $\varnothing \frac{3}{8} \times 31\frac{3}{8} \times 3'-2"$



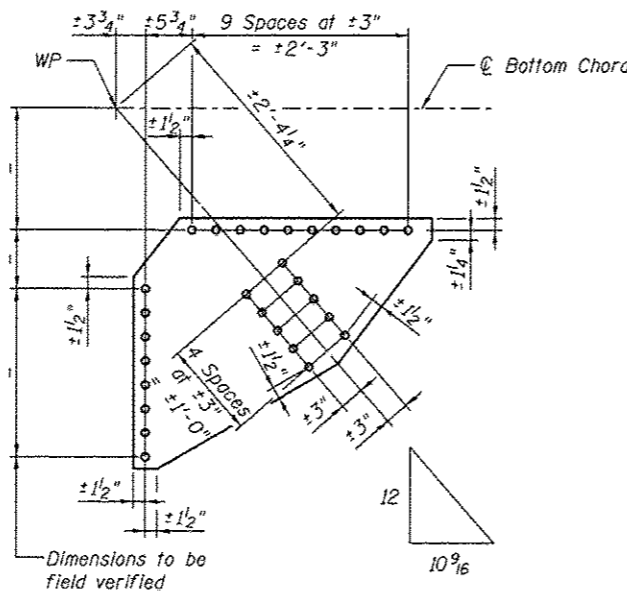
L22'N-L21'S AT L21'S
 $\varnothing \frac{5}{8} \times 18\frac{3}{4} \times 2'-10"$



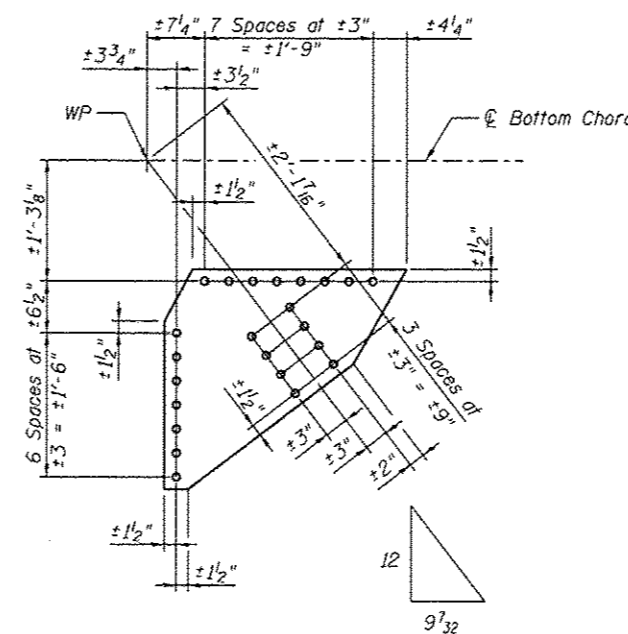
L21'S-L20'N AT L21'S
 $\varnothing \frac{3}{8} \times 25\frac{1}{2} \times 2'-8\frac{1}{4}$



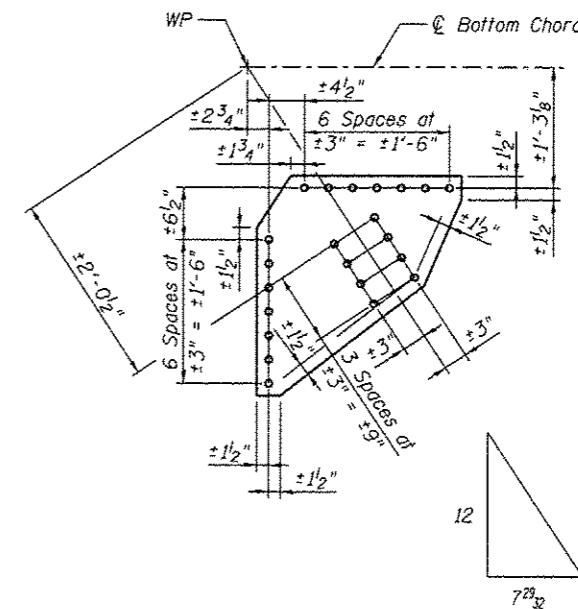
L20'N-L19'S AT L19'S
 $\varnothing \frac{3}{8} \times 25\frac{1}{2} \times 2'-7"$



L13'S-L12'N AT L12'N
 $\varnothing \frac{3}{8} \times \dots \times 2'-11\frac{3}{4}$



L7'N-L6'S AT L6'S
 $\varnothing \frac{3}{8} \times 27\frac{1}{2} \times 2'-6\frac{1}{4}$



L6'N-L5'S AT L6'N
 $\varnothing \frac{3}{8} \times 27\frac{1}{2} \times 2'-1\frac{1}{2}$

BILL OF MATERIAL

Item	Unit	Total
Structural Steel Repair	Pound	1050

Note:
Field drill holes using existing holes as template.



USER NAME =	DESIGNED - CDB	REVISED
PLOT SCALE =	CHECKED - AEC	REVISED
PLOT DATE = 03/20/2014	DRAWN - AEC	REVISED
	CHECKED - CDB	REVISED

STATE OF ILLINOIS
DEPARTMENT OF TRANSPORTATION

MAIN SPAN BOTTOM LATERAL CONNECTION PLATE REPLACEMENTS - 2
S.N. 082-6001 MLK BRIDGE OVER MISSISSIPPI RIVER

SHEET NO. 581 OF 5138 SHEETS

F.A.P. RTE. 799	SECTION 1BR, DRS-2	COUNTY ST. CLAIR	TOTAL SHEETS 156	SHEET NO. 99
ILLINOIS FED. AID PROJECT			CONTRACT NO. 76B03	