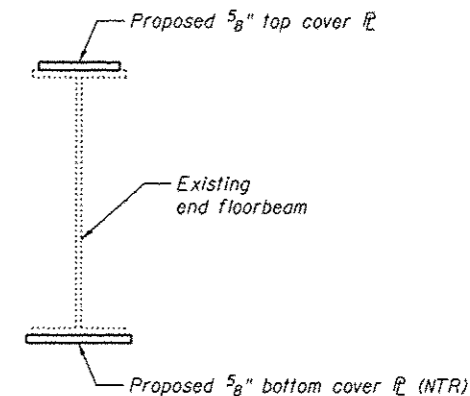
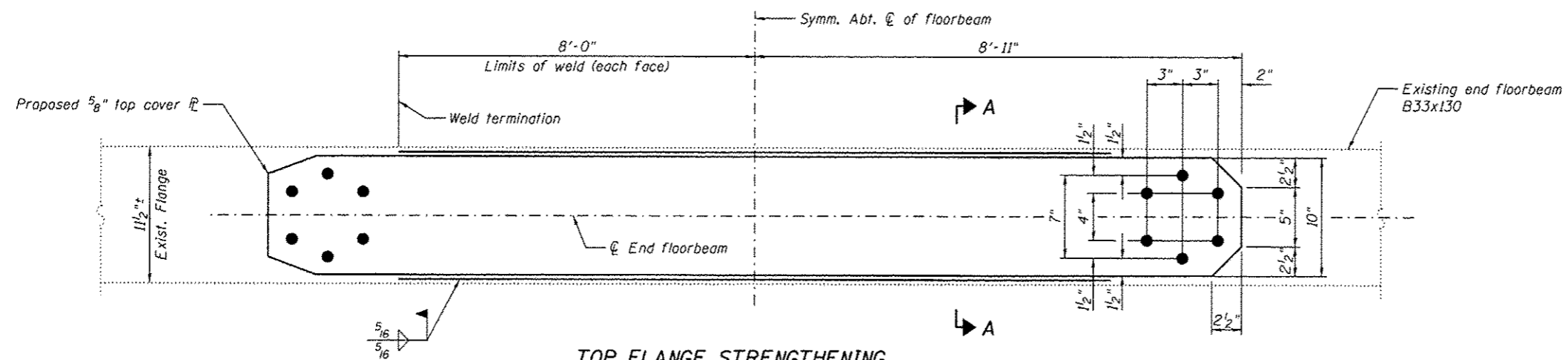


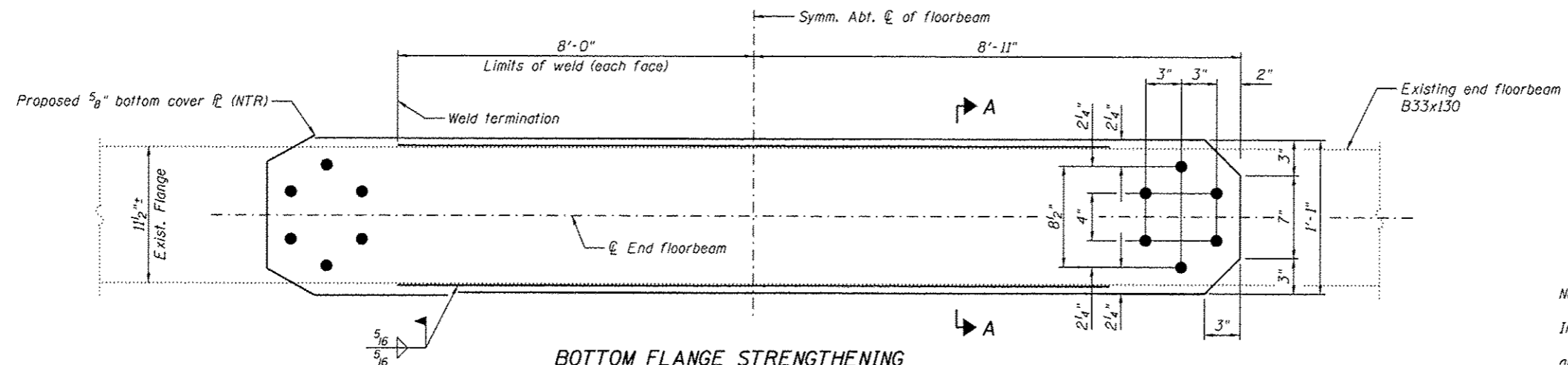
**DECK TRUSS
PARTIAL FRAMING PLAN
END FLOORBEAM STRENGTHENING**
Spans 12 and 13



SECTION A-A
(Deck and Stringers not shown for clarity.)



**TOP FLANGE STRENGTHENING
AT END FLOORBEAM**
(2 Locations - Pier 12, Span 12 and Pier 12, Span 13)



**BOTTOM FLANGE STRENGTHENING
AT END FLOORBEAM**
(4 Locations)

BILL OF MATERIAL

Item	Unit	Total
Structural Steel Repair	Pound	3900

Notes:
Load carrying components designated "NTR" shall confirm to the Impact Testing Requirement, Zone 2.
For top cover plate details for end floorbeam at Pier 11, Span 12 and Pier 13, Span 13, see sheet S83.



USER NAME *	DESIGNED - MEL	REVISED
	CHECKED - CDB	REVISED
PLOT SCALE *	DRAWN - PRC	REVISED
PLOT DATE * 05/02/2014	CHECKED - MEL	REVISED

STATE OF ILLINOIS
DEPARTMENT OF TRANSPORTATION

IL APPROACH END FLOORBEAM STRENGTHENING - 1
SPANS 12 AND 13
S.N. 082-6001 MLK BRIDGE OVER MISSISSIPPI RIVER

SHEET NO. S82 OF S138 SHEETS

F.A.P. RTE. 799	SECTION 1BR, ORS-2	COUNTY ST. CLAIR	TOTAL SHEETS 156	SHEET NO. 100
CONTRACT NO. 76803				
ILLINOIS FED. AID PROJECT				