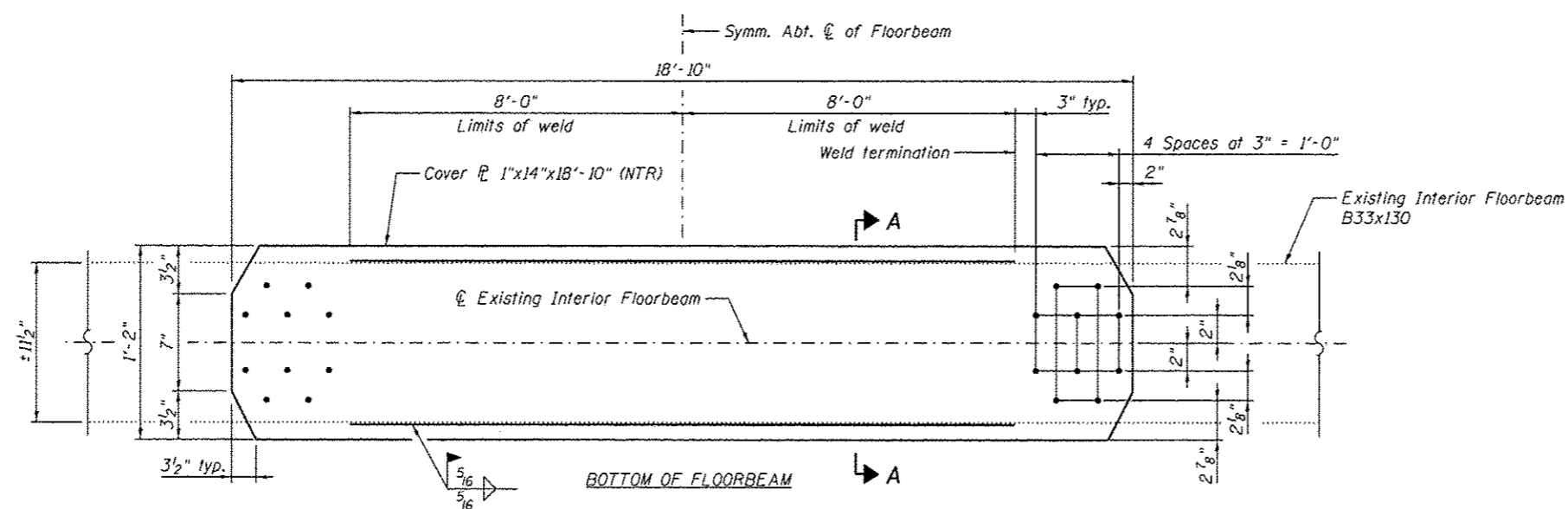
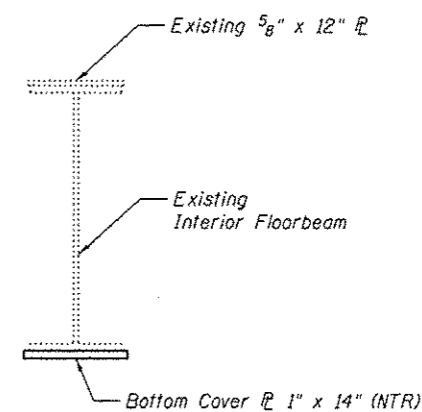


**DECK TRUSS  
PARTIAL FRAMING PLAN  
INTERIOR FLOORBEAM STRENGTHENING**  
Spans 12 and 13



**INTERIOR FLOORBEAM STRENGTHENING**  
(14 Locations)



**SECTION A-A**  
(Deck and Stringers not shown for clarity.)

**BILL OF MATERIAL**

Item	Unit	Total
Structural Steel Repair	Pound	13,010

Note:  
Load carrying components designated "NTR" shall conform to the Impact Testing Requirement, Zone 2.



USER NAME *	DESIGNED - MEL	REVISED
	CHECKED - CDB	REVISED
PLOT SCALE *	DRAWN - AEC	REVISED
PLOT DATE * 05/02/2014	CHECKED - MEL	REVISED

**STATE OF ILLINOIS  
DEPARTMENT OF TRANSPORTATION**

**ILLINOIS APPROACH INTERIOR FLOORBEAM STRENGTHENING  
SPANS 12 AND 13  
S.N. 082-6001 MLK BRIDGE OVER MISSISSIPPI RIVER**

SHEET NO. SB4 OF S138 SHEETS

F.A.P. RTE.	SECTION	COUNTY	TOTAL SHEETS	SHEET NO.
799	1BR, DRS-2	ST. CLAIR	156	102
			CONTRACT NO. 76B03	
ILLINOIS FED. AID PROJECT				