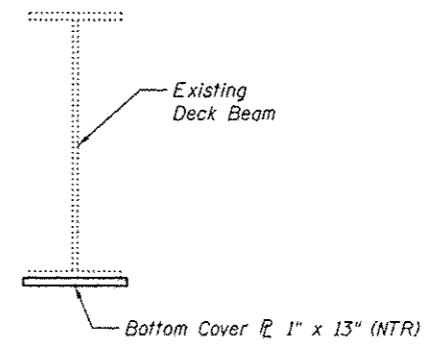
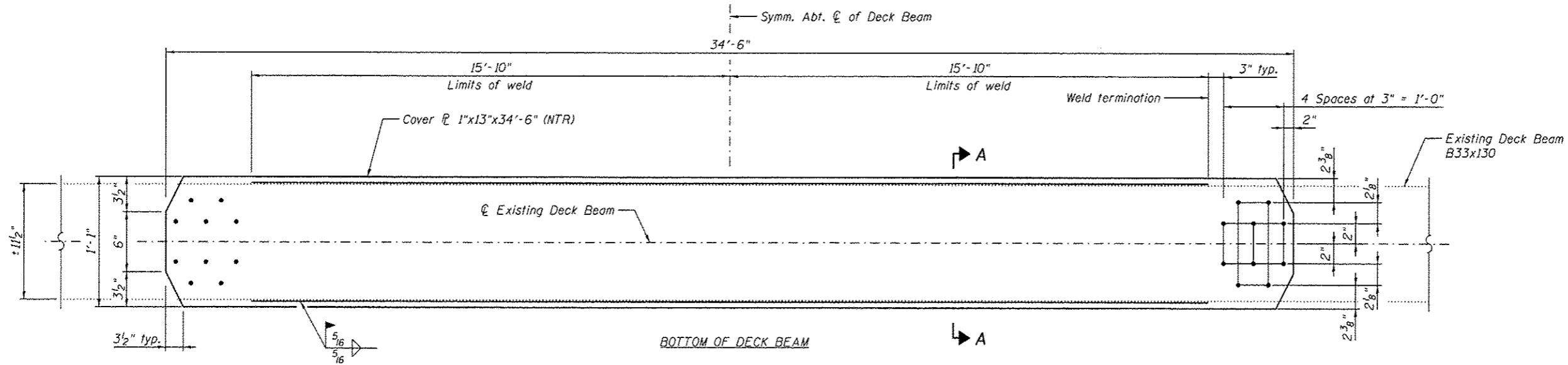


**PARTIAL FRAMING PLAN  
BEAM STRENGTHENING**  
Spans 18, 23 and 28



**SECTION A-A**  
(Deck not shown for clarity.)



**SPANS 18, 23 AND 28 BEAM STRENGTHENING**  
(15 Locations)

**BILL OF MATERIAL**

Item	Unit	Total
Structural Steel Repair	Pound	23,540

Note:  
Load carrying components designated "NTR" shall conform to the Impact Testing Requirement, Zone 2.



USER NAME *	DESIGNED - MEL	REVISED
	CHECKED - CDB	REVISED
PLOT SCALE *	DRAWN - AEC	REVISED
PLOT DATE * 05/02/2014	CHECKED - MEL	REVISED

STATE OF ILLINOIS  
DEPARTMENT OF TRANSPORTATION

ILLINOIS APPROACH BEAM STRENGTHENING SPANS 18, 23 AND 28  
S.N. 082-6001 MLK BRIDGE OVER MISSISSIPPI RIVER

SHEET NO. S86 OF 5138 SHEETS

F.A.P. RTE.	SECTION	COUNTY	TOTAL SHEETS	SHEET NO.
799	1BR, DRS-2	ST. CLAIR	156	104
ILLINOIS FED. AID PROJECT			CONTRACT NO. 76B03	