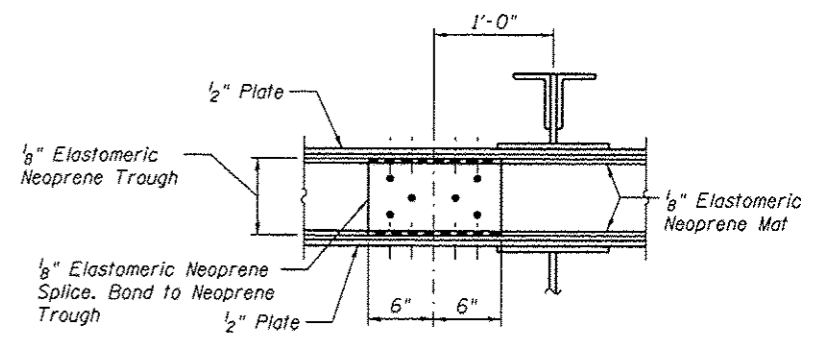
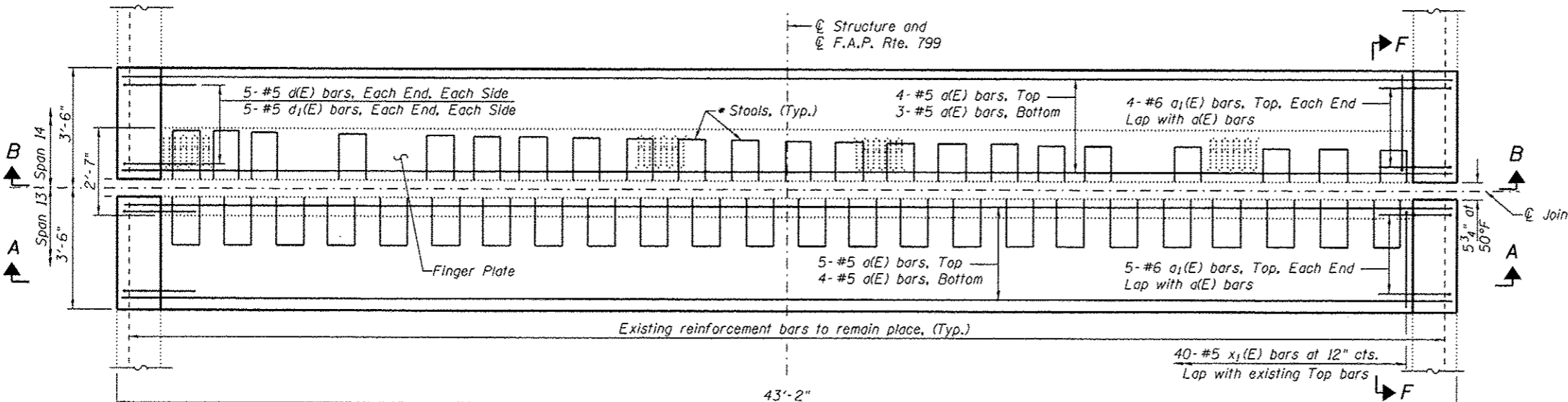
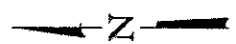


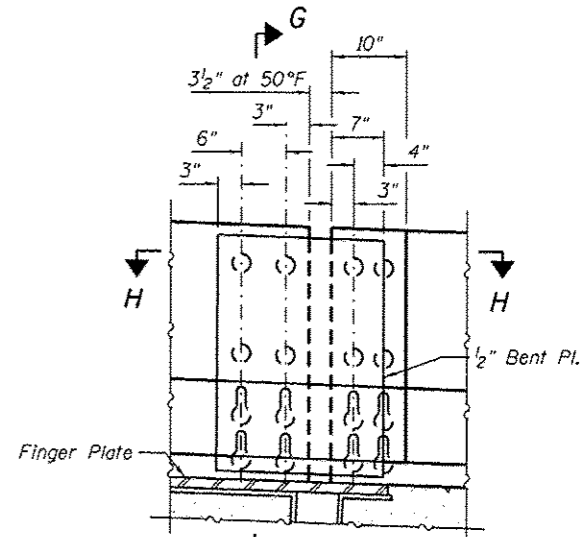
SECTION A-A AT PIER 13



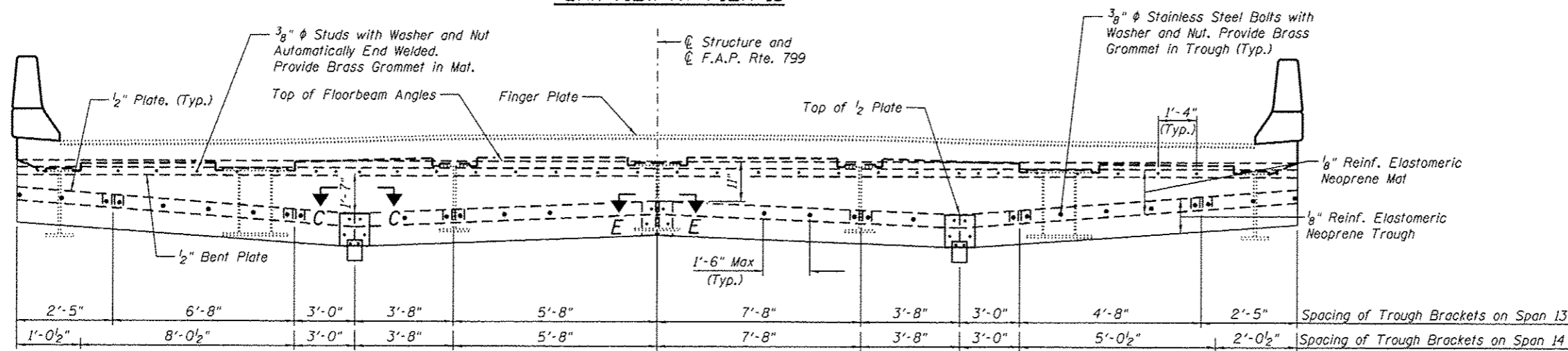
SECTION E-E



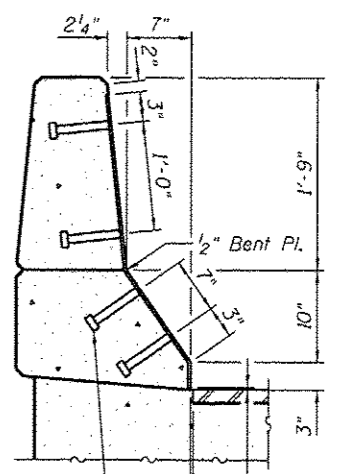
PLAN VIEW AT PIER 13



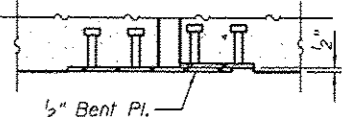
SECTION F-F



SECTION B-B



SECTION G-G



SECTION H-H

Note:  
 See Sheet S104 of S138 for Section C-C and Section at End of Trough.  
 See Sheet S105 of S138 for Bill of Material.  
 For cross-section thru expansion joint and additional notes, see sheet S103 of S138.  
 Re-attach existing conduit to parapets. Cost included with Concrete Superstructure.  
 See Sheet S129 of S138 for Proposed Drainage System at Pier 13.

\* Stools at the locations where cover plates are provided over floor beams shall be replaced. Use existing stools at all other locations.

(Sheet 2 of 5)



USER NAME *	DESIGNED - JJA	REVISED -
FILE NAME *	CHECKED - TBP	REVISED -
PLOT SCALE *	DRAWN - AJF	REVISED -
PLOT DATE *	CHECKED - VPT	REVISED -

STATE OF ILLINOIS  
 DEPARTMENT OF TRANSPORTATION

FINGER PLATE JOINT REPAIR  
 S.N. 082-6001 MLK BRIDGE OVER MISSISSIPPI RIVER

F.A.P. RTE.	SECTION	COUNTY	TOTAL SHEETS	SHEET NO.
799	1BR, DRS-2	ST. CLAIR	156	120
CONTRACT NO. 76B03				
ILLINOIS FED. AID PROJECT				

SHEET NO. S102 OF S138 SHEETS