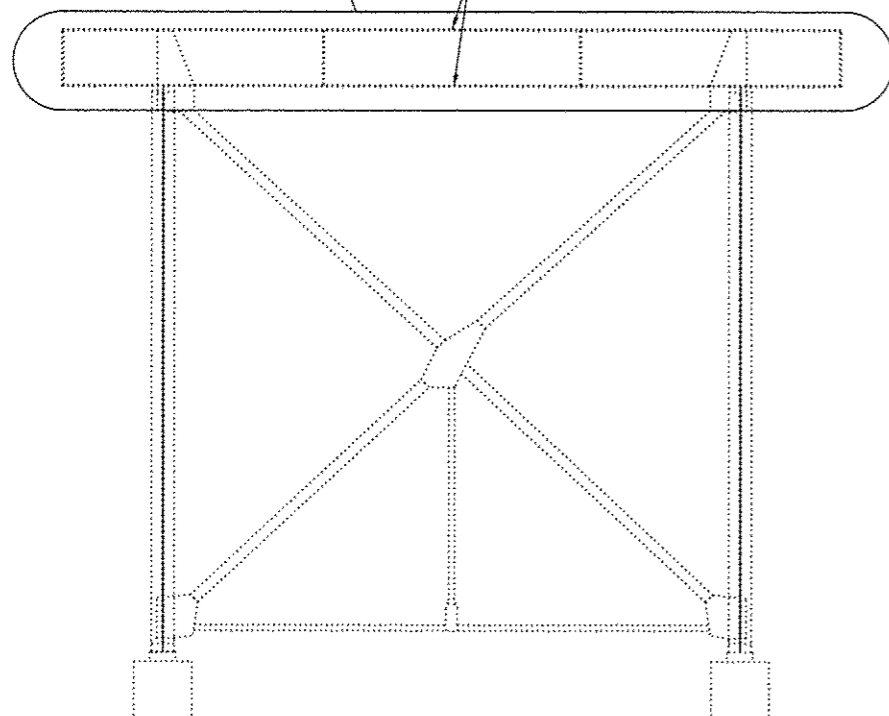


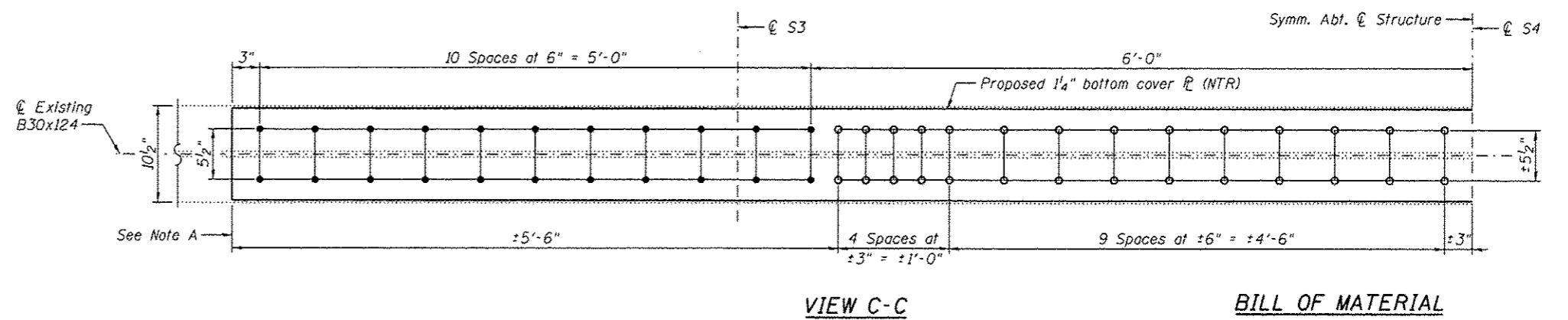
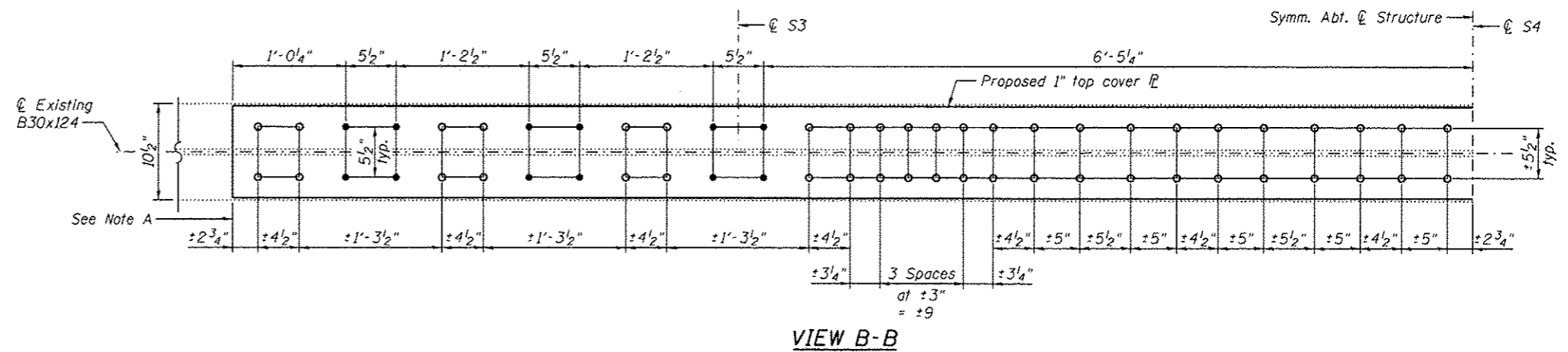
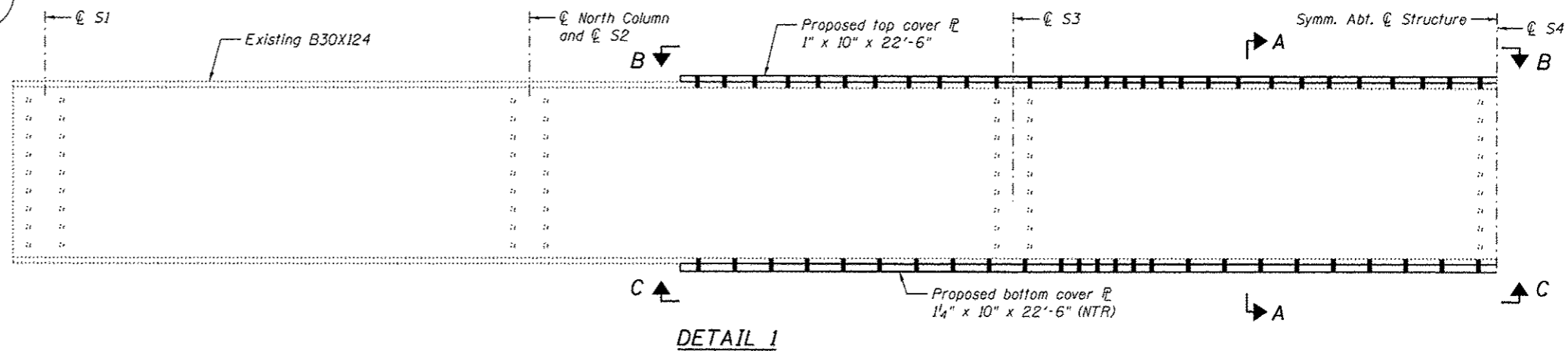
Strengthen Bent Cap
see Detail 1, this sheet.

Remove existing cover

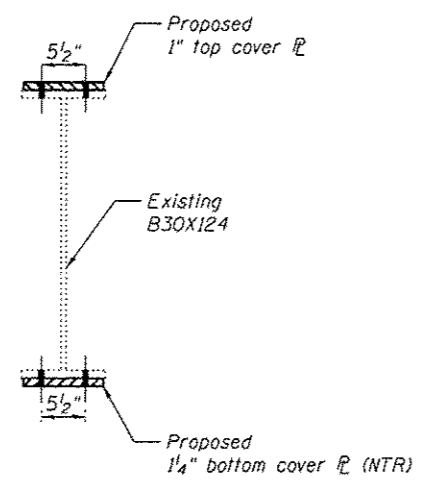


BENT 13
(Looking East)

Procedure:
Remove and install top cover plate.
After top cover plate is installed, remove and install bottom cover plate.



SECTION A-A



BILL OF MATERIAL

Item	Unit	Total
Structural Steel Repair	Pound	1,930

Note A:
Field drill holes using existing holes as template.
Remainder of holes may be shop or field drilled.

Note:
Load carrying components designated "NTR" shall conform to the Impact Testing Requirement, Zone 2.