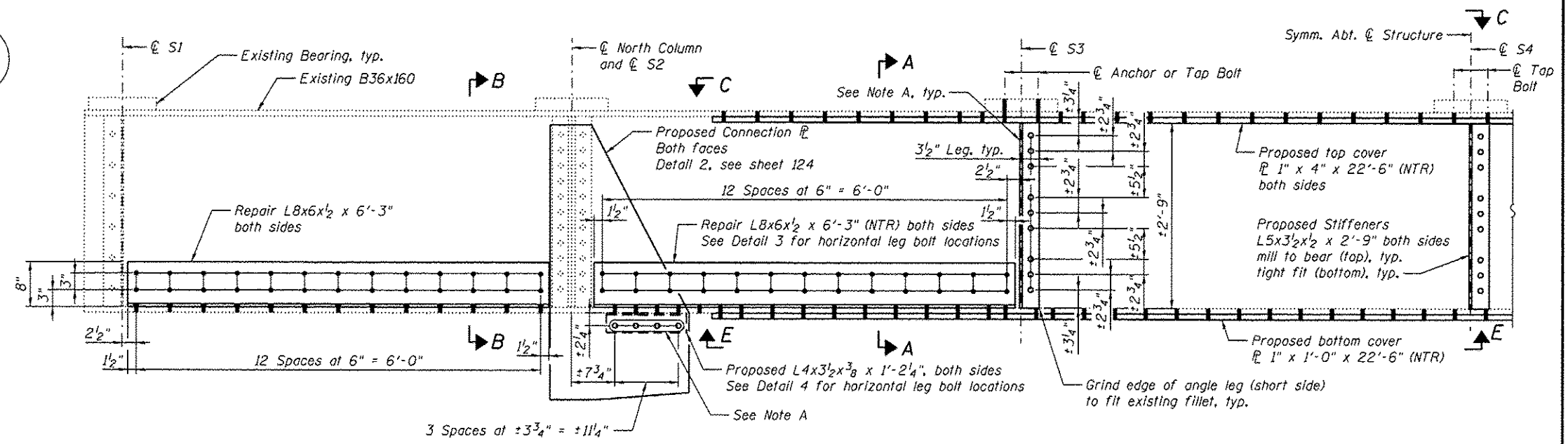
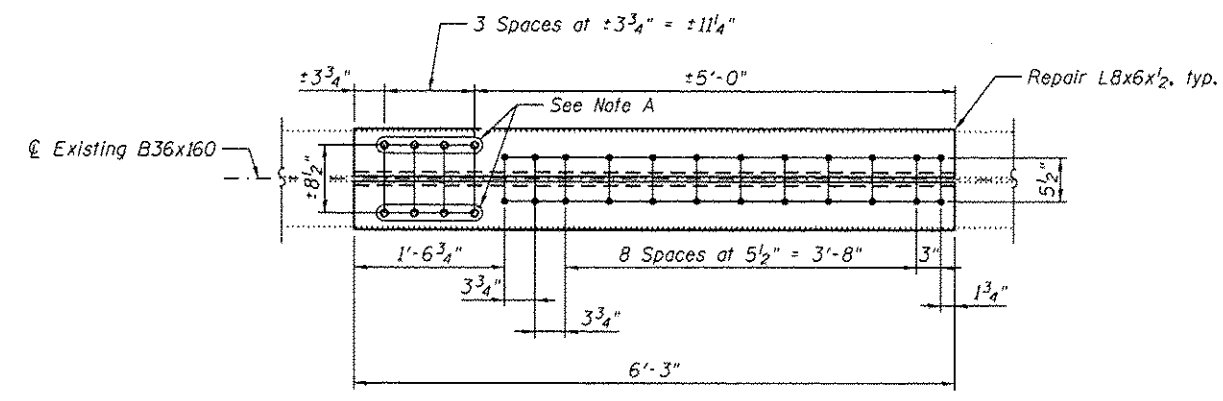


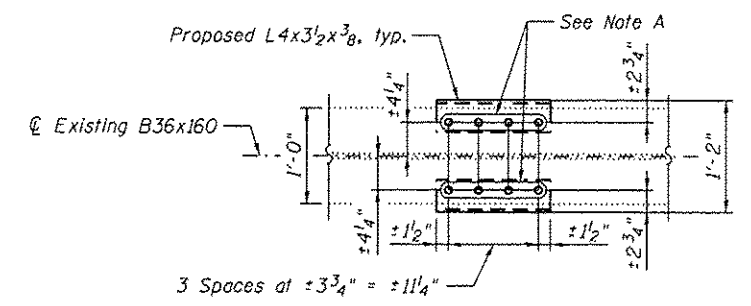
**BENT 18**  
(Looking East)



**DETAIL 1**

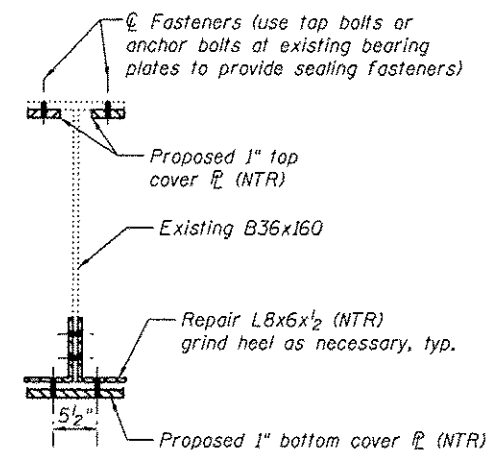


**DETAIL 3**

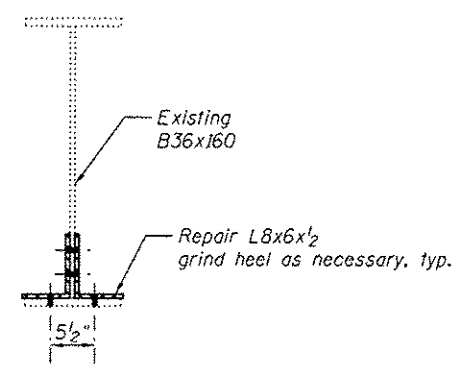


**DETAIL 4**

(Connection plates not shown for clarity)



**SECTION A-A**



**SECTION B-B**

**BILL OF MATERIAL**

| Item                    | Unit  | Total |
|-------------------------|-------|-------|
| Structural Steel Repair | Pound | 3,690 |

Notes:  
 All bolted connections shown on this sheet shall be made with 3/4" dia. H.S. bolts.  
 Load carrying components designated "NTR" shall conform to the Impact Testing Requirement, Zone 2.  
 For View C-C and View E-E details, see sheet S124.

Note A:  
 Field drill holes using existing holes as template.  
 Remainder of holes may be shop or field drilled.



|                        |                |          |
|------------------------|----------------|----------|
| USER NAME              | DESIGNED - YSS | REVISOR  |
| PLOT SCALE             | CHECKED - ZJB  | REVISION |
| PLOT DATE - 05/02/2014 | DRAWN - AEC    | REVISION |
|                        | CHECKED - YSS  | REVISION |

STATE OF ILLINOIS  
 DEPARTMENT OF TRANSPORTATION

ILLINOIS APPROACH BENT 18 REPAIRS  
 S.N. 082-6001 MLK BRIDGE OVER MISSISSIPPI RIVER

|                               |                    |                  |                    |               |
|-------------------------------|--------------------|------------------|--------------------|---------------|
| F.A.P. RTE. 799               | SECTION 1BR, DRS-2 | COUNTY ST. CLAIR | TOTAL SHEETS 156   | SHEET NO. 134 |
| SHEET NO. S116 OF S138 SHEETS |                    |                  | CONTRACT NO. 76B03 |               |
| ILLINOIS FED. AID PROJECT     |                    |                  |                    |               |