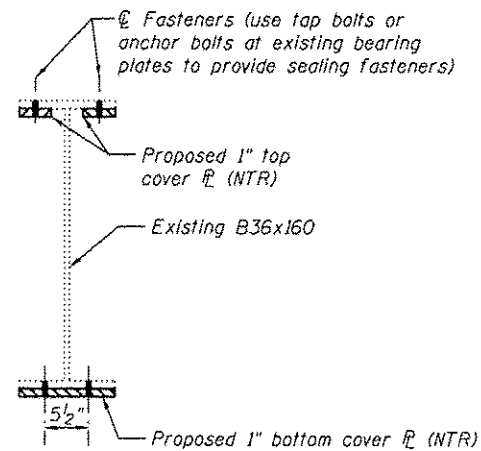
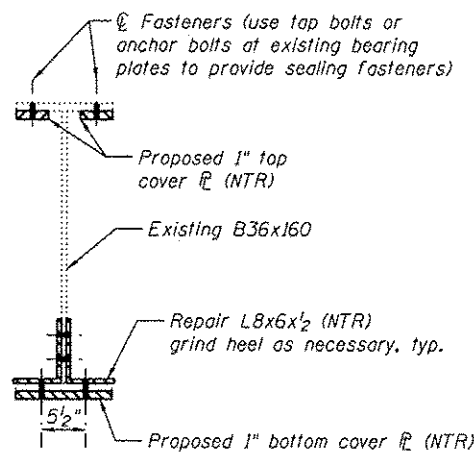


BENT 28
(Looking East)

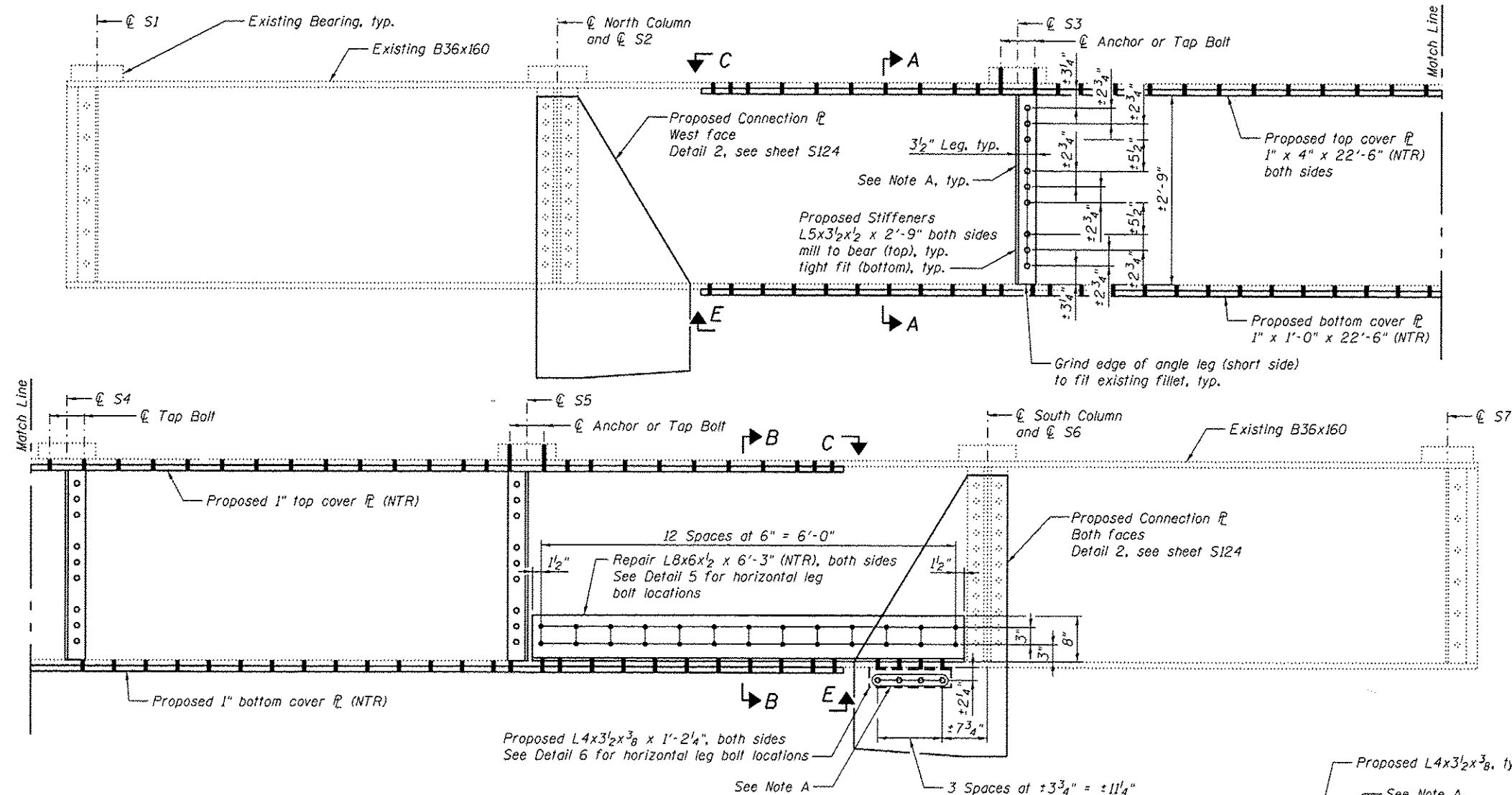


SECTION A-A

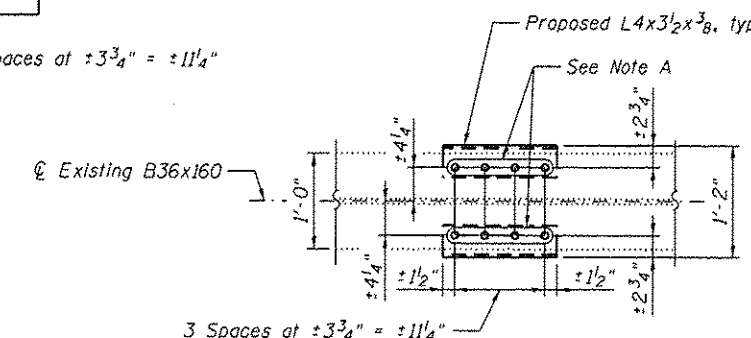


SECTION B-B

Note A:
Field drill holes using existing holes as template.
Remainder of holes may be shop or field drilled.



DETAIL 1



DETAIL 6

(Connecting plates not shown for clarity)

BILL OF MATERIAL

Item	Unit	Total
Structural Steel Repair	Pound	3,280

Notes:
All bolted connections shown on this sheet shall be made with 3/4" dia. H.S. bolts.
Load carrying components designated "NTR" shall conform to the Impact Testing Requirement, Zone 2.
For View C-C and View E-E details, see sheet S124.



USER NAME	DESIGNED - YSS	REVISED
PLOT SCALE	CHECKED - ZJB	REVISED
PLOT DATE	DRAWN - AEC	REVISED
	CHECKED - YSS	REVISED

STATE OF ILLINOIS
DEPARTMENT OF TRANSPORTATION

ILLINOIS APPROACH BENT 28 REPAIRS - 1
S.N. 082-6001 MLK BRIDGE OVER MISSISSIPPI RIVER

F.A.P. RTE.	SECTION	COUNTY	TOTAL SHEETS	SHEET NO.
799	IBR, DRS-2	ST. CLAIR	156	139
CONTRACT NO. 76B03				

SHEET NO. S121 OF S138 SHEETS

ILLINOIS FED. AID PROJECT