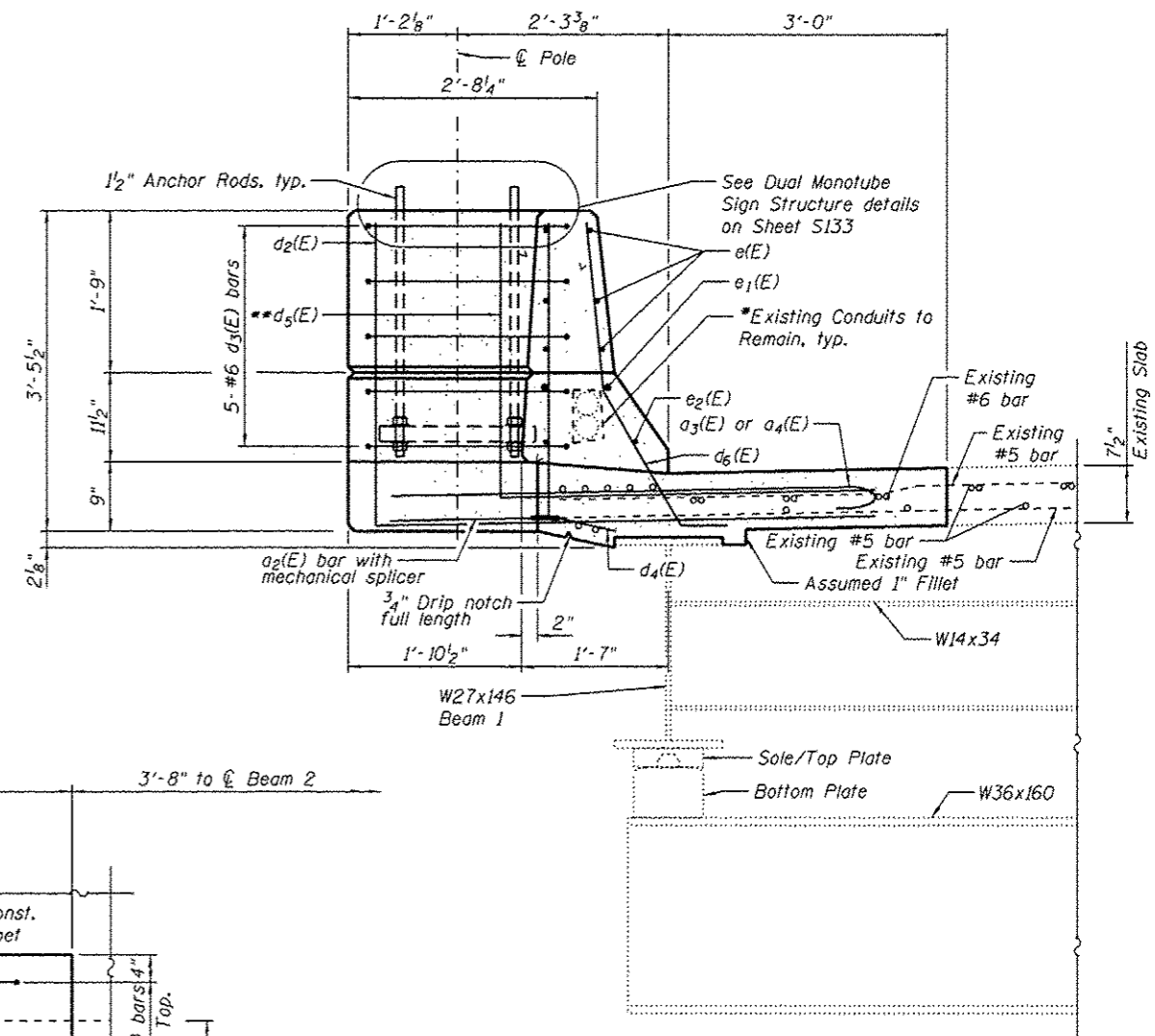


INSIDE ELEVATION OF PARAPET

*Adjust bar locations as required to miss existing reinforcement and conduit. Maintain 1/2" cl. from reinf. to conduit.
 **Drill holes in anchor plate to allow for placement of d6(E) bars



SECTION A-A

Design Notes:

The foundations were designed to support 18" diameter vertical and horizontal poles and a 5.3 kip vertical dead load to each foundation along with the effects of wind loading. Refer to Sheet S136 for the proposed anchor bolt layout as dimensioned in the Anchor Rod Detail. Variation in the anchor bolt diameter or layout and/or increase in pole size or weight shall require the reanalysis of the proposed foundation for adequacy. This analysis shall be performed, sealed, and submitted for the Engineer's approval by an Illinois SE at no additional cost.
 Fatigue loading was ignored for foundation design.

DESIGN SPECIFICATIONS

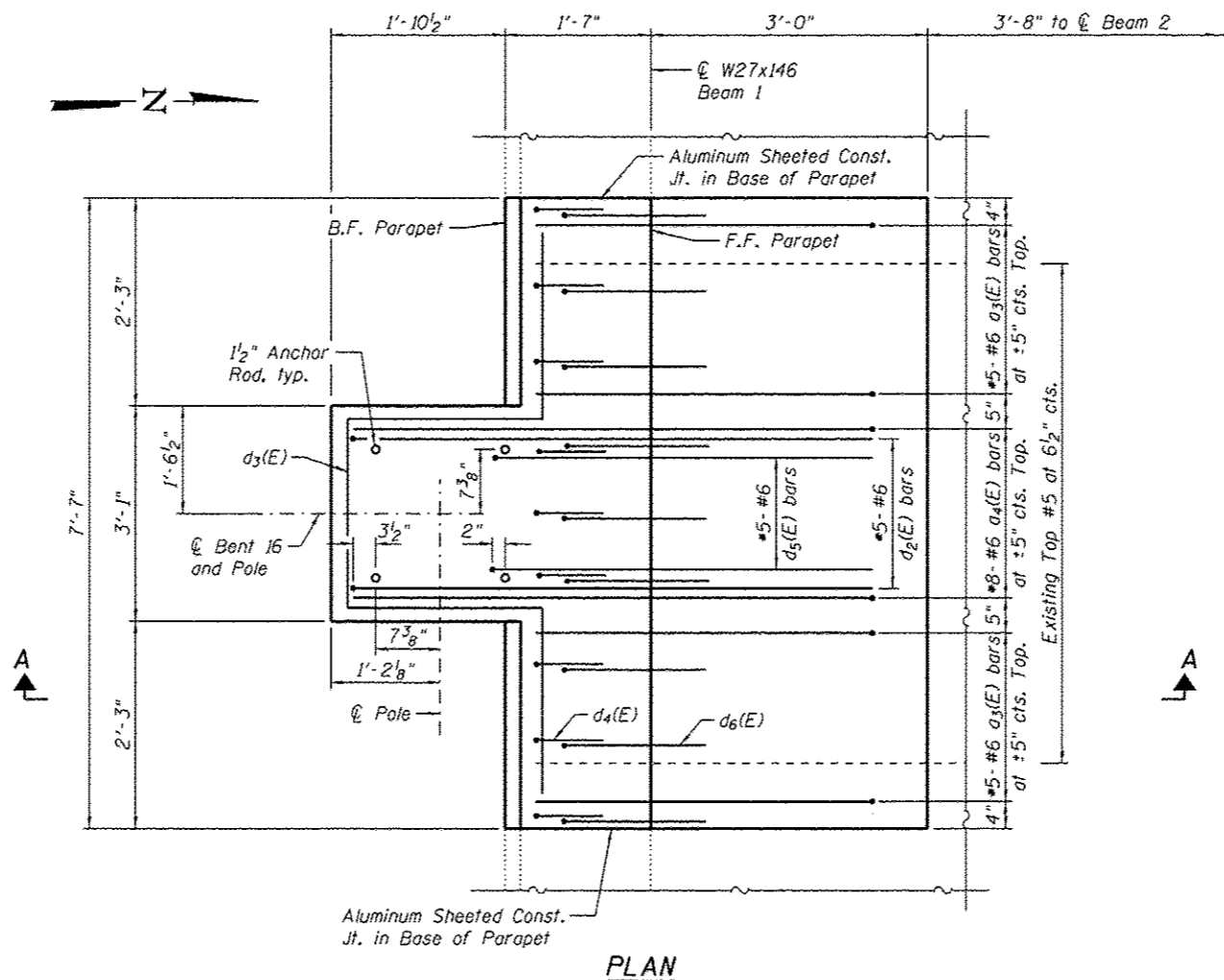
2002 AASHTO Standard Specification for Highway Bridges and the Manual for Bridge Evaluation, 2nd Edition, with 2011 and 2013 Interims
 2001 AASHTO Standard Specifications for Structural Supports for Highway Signs, Luminaires and Traffic Signals with 2002, 2003, and 2006 Interims

DESIGN STRESSES

FIELD UNITS
 f'c = 3,500 psi
 fy = 60,000 psi (Reinforcement)
 fy = 50,000 psi (Anchor Plate)

EXISTING CONSTRUCTION

FIELD UNITS
 f'c = 3,500 psi
 fy = 60,000 psi (Reinforcement)



PLAN

(Not showing Bottom bars or longitudinal bars in Deck for clarity)
 (South Parapet Shown, North Parapet Similar)

Notes:

Cost of Anchor Rods Included with Concrete Superstructure. See Sheet S136 for Anchor Rod Details.
 All existing longitudinal bars in deck to remain in place. Minimum clearance to be 1/2" in Foundation unless otherwise shown. Tilt #6 d3(E) and d4(E) bars as required to maintain clearance.

ANCHOR RODS: Shall conform to ASTM F1554 Grade 105.



USER NAME *	DESIGNED - RPW	REVISED -
FILE NAME *	CHECKED - LMS	REVISED -
PLOT SCALE *	DRAWN - AJF	REVISED -
PLOT DATE *	CHECKED - LMS	REVISED -

STATE OF ILLINOIS
 DEPARTMENT OF TRANSPORTATION

FOUNDATION DETAILS 1
 S.N. 082-6001 MLK BRIDGE OVER MISSISSIPPI RIVER

SHEET NO. S135 OF S138 SHEETS

F.A.P. R.T.E.	SECTION	COUNTY	TOTAL SHEETS	SHEET NO.
799	1BR, DRS-2	ST. CLAIR	156	153
			CONTRACT NO. 76B03	
ILLINOIS FED. AID PROJECT				