

STATE OF ILLINOIS  
DEPARTMENT OF TRANSPORTATION  
DIVISION OF HIGHWAYS

**PROPOSED  
HIGHWAY PLANS**

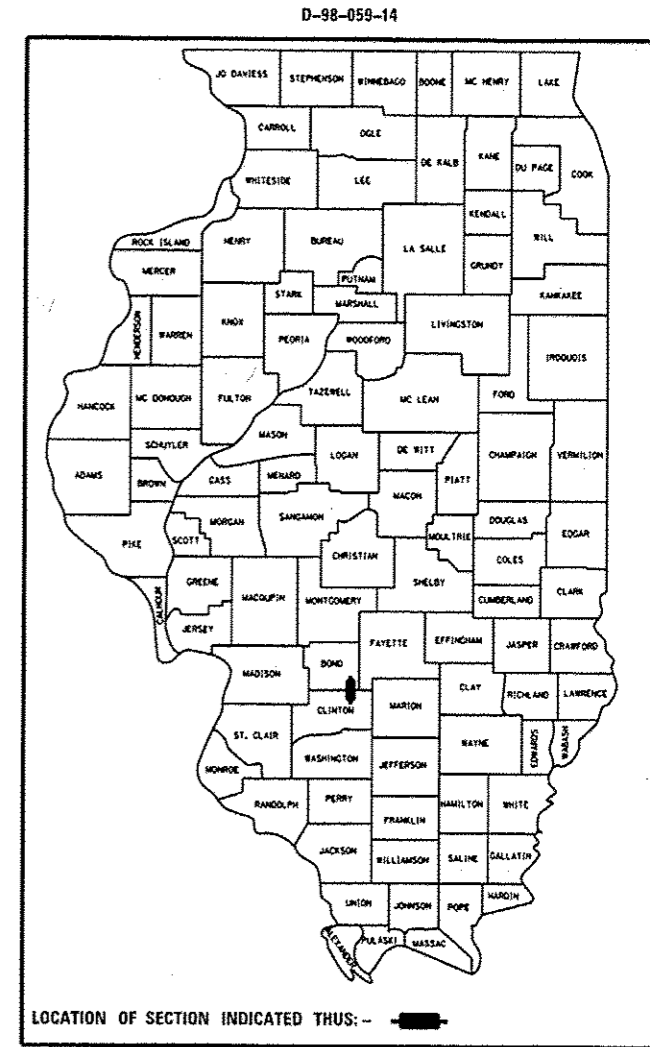
FAP ROUTE 42 (IL 127)  
SECTION (111,112)-I

CONCRETE PATCHING  
CLINTON COUNTY

C-98-061-14

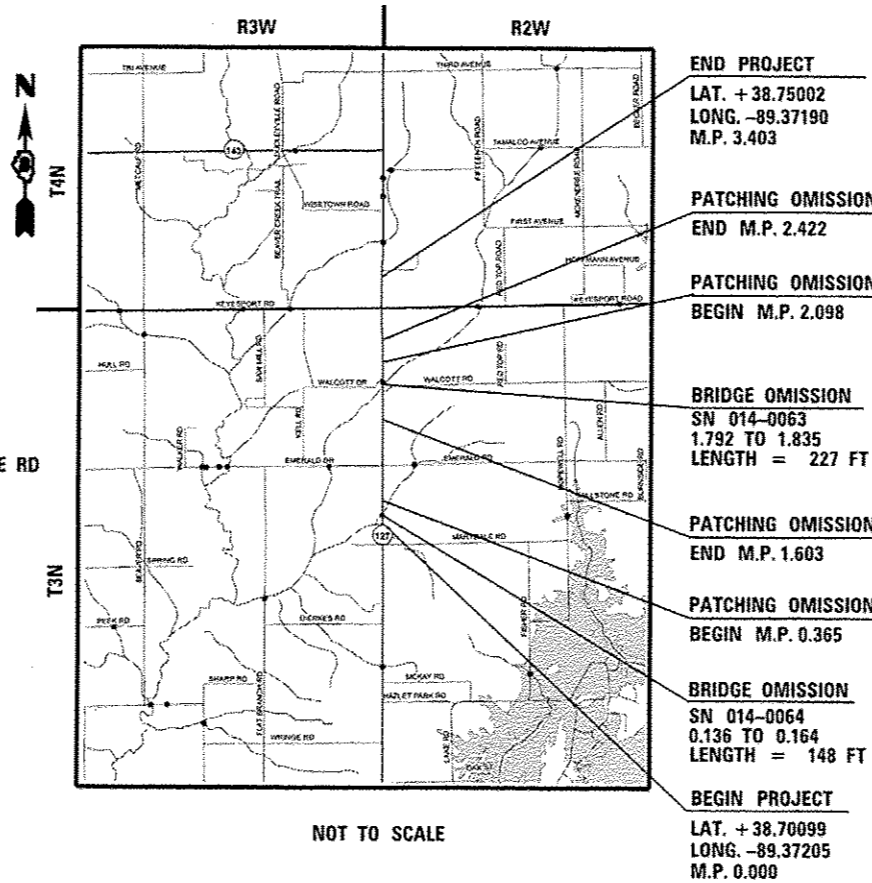
F.A.P. RTE.	SECTION	COUNTY	TOTAL SHEETS	SHEET NO.
42	(111,112)-I	BOND & CLINTON	7	1
		ILLINOIS	CONTRACT NO. 76H34	

FOR INDEX OF SHEETS, SEE SHEET NO. 2



IL 143 TO KEYESPORT RD  
ADT = 2650 (2013)  
ADT = 2700 (2015)  
ADT = 3300 (2035)  
SU = 3.8%  
MU = 12.3%

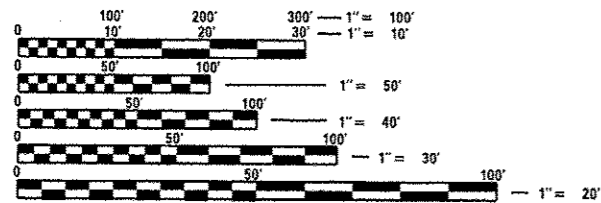
KEYESPORT RD TO MARYDALE RD  
ADT = 3450 (2013)  
ADT = 3500 (2015)  
ADT = 4300 (2035)  
SU = 4.3%  
MU = 11.6%



NOT TO SCALE

DESIGN DESIGNATION  
NA

GROSS LENGTH = 17968 FT = 3.403 MILE  
NET LENGTH = 9345.6 FT. = 1.770 MILE



FULL SIZE PLANS HAVE BEEN PREPARED USING STANDARD ENGINEERING SCALES. REDUCED SIZED PLANS WILL NOT CONFORM TO STANDARD SCALES. IN MAKING MEASUREMENTS ON REDUCED PLANS, THE ABOVE SCALES MAY BE USED.

J.U.L.I.E.  
JOINT UTILITY LOCATION INFORMATION FOR EXCAVATION  
1-800-892-0123  
OR 811

PROJECT ENGINEER: PATTI LEBEAU (618) 346-3179  
PROJECT MANAGER: REBECCA THARP (618) 346-3323

CONTRACT NO. 76H34

STATE OF ILLINOIS  
DEPARTMENT OF TRANSPORTATION  
DIVISION OF HIGHWAYS

SUBMITTED *July 27, 2014*

*Jeffrey Z. Kanas*  
DEPUTY DIRECTOR OF HIGHWAYS, REGION 5 ENGINEER

*Oct 17, 2014*  
*John D. Baranzoni, PE*  
actg ENGINEER OF DESIGN AND ENVIRONMENT

*Oct 17, 2014*  
*Chris Egan, PE*  
DIRECTOR OF HIGHWAYS, CHIEF ENGINEER

PRINTED BY THE AUTHORITY  
OF THE STATE OF ILLINOIS

GENERAL NOTES

1. ILLINOIS STATE LAW REQUIRES A 48-HOUR NOTICE BE GIVEN TO ALL UTILITIES WITHIN THE PROJECT AREA BEFORE DIGGING. FIELD MARKING OF FACILITIES MAY BE OBTAINED BY CONTACTING J.U.L.I.E. OR FOR NON-MEMBERS, THE UTILITY COMPANY DIRECTLY. AGENCIES KNOWN TO HAVE FACILITIES WITHIN THE PROJECT AREA ARE AS FOLLOWS:
  - AT&T ILLINOIS
  - CARLYLE NORTH WATER COMPANY
  - CLINTON COUNTY ELECTIC COOPERATIVE, INC.
  - FRONTIER NORTH, INC.
  - SOUTHWESTERN ELECTRIC COOPERATIVE, INC.
 MEMBERS OF J.U.L.I.E. CALL TOLL FREE (800) 892-0123 OR 811 AND ARE INDICATED BY •. NON- J.U.L.I.E. MEMBERS MUST BE NOTIFIED INDIVIDUALLY.
2. THE CONTRACTOR AND THE ENGINEER SHALL BE AWARE THAT NO SURVEY WAS PERFORMED FOR THIS PROJECT. THE STATIONING, TOPOGRAPHY, AND QUANTITIES SHOWN IN THE PLANS WERE CREATED USING MICROFILM AND FIELD MEASUREMENTS. ALL SHALL BE ASSUMED TO BE APPROXIMATE. THE CONTRACTOR SHALL VERIFY DIMENSIONS AND CDNDITIONS IN THE FIELD PRIOR TO CONSTRUCTION AND ORDERING OF MATERIALS.
3. NO OVERNIGHT LANE CLOSURES WILL BE PERMITTED.
4. THE RESIDENT ENGINEER SHALL VERIFY THE EXISTENCE OF HIGHWAY LIGHTING AND/OR INTELLIGENT TRANSPORTATION SYSTEMS (I.T.S.) UTILITIES WITHIN THE PROJECT LIMITS. IF HIGHWAY LIGHTING AND/OR I.T.S. EXISTS WITHIN THE PROJECT LIMITS, AND IF THESE ITEMS REQUIRE LOCATING, THE CONTRACTOR SHALL BE DIRECTED TO DO SO ACCORDING TO SECTION 803 OF THE STANDARD SPECIFICATIONS. THIS WORK SHALL BE PAID FOR ACCORDING TO ARTICLE 109.04 OF THE STANDARD SPECIFICATIONS.
5. ALL TURF AREAS DISTURBED BY THE CONTRACTOR SHALL BE SEEDED WITH THE APPROPRIATE EROSION CONTROL, AS DIRECTED BY THE ENGINEER, AT THE CONTRACTOR'S EXPENSE.
6. "ROAD CONSTRUCTION AHEAD" SIGNS SHALL BE PLACED AT EACH END OF THE PROJECT PLUS THE INTERSECTING SIDE ROADS, AND WILL BE CONSIDERED INCLUDED IN THE TRAFFIC CONTROL PAY ITEMS. ALL CONSTRUCTION SIGNS SHALL BE 48"X 48" FLUORESCENT ORANGE. FOR STABILIZATION, ALL TYPE III BARRICADES REQUIRE A MINIMUM OF FOUR SAND BAGS PER BARRICADE.

INDEX OF SHEETS

1. COVER SHEET
2. INDEX OF SHEETS, HIGHWAY STANDARDS, GENERAL NOTES, AND COMMITMENTS
3. SUMMARY OF QUANTITIES
4. LOCATION MAP
5. TYPICAL SECTIONS
- 6-7. SCHEDULES

STANDARDS

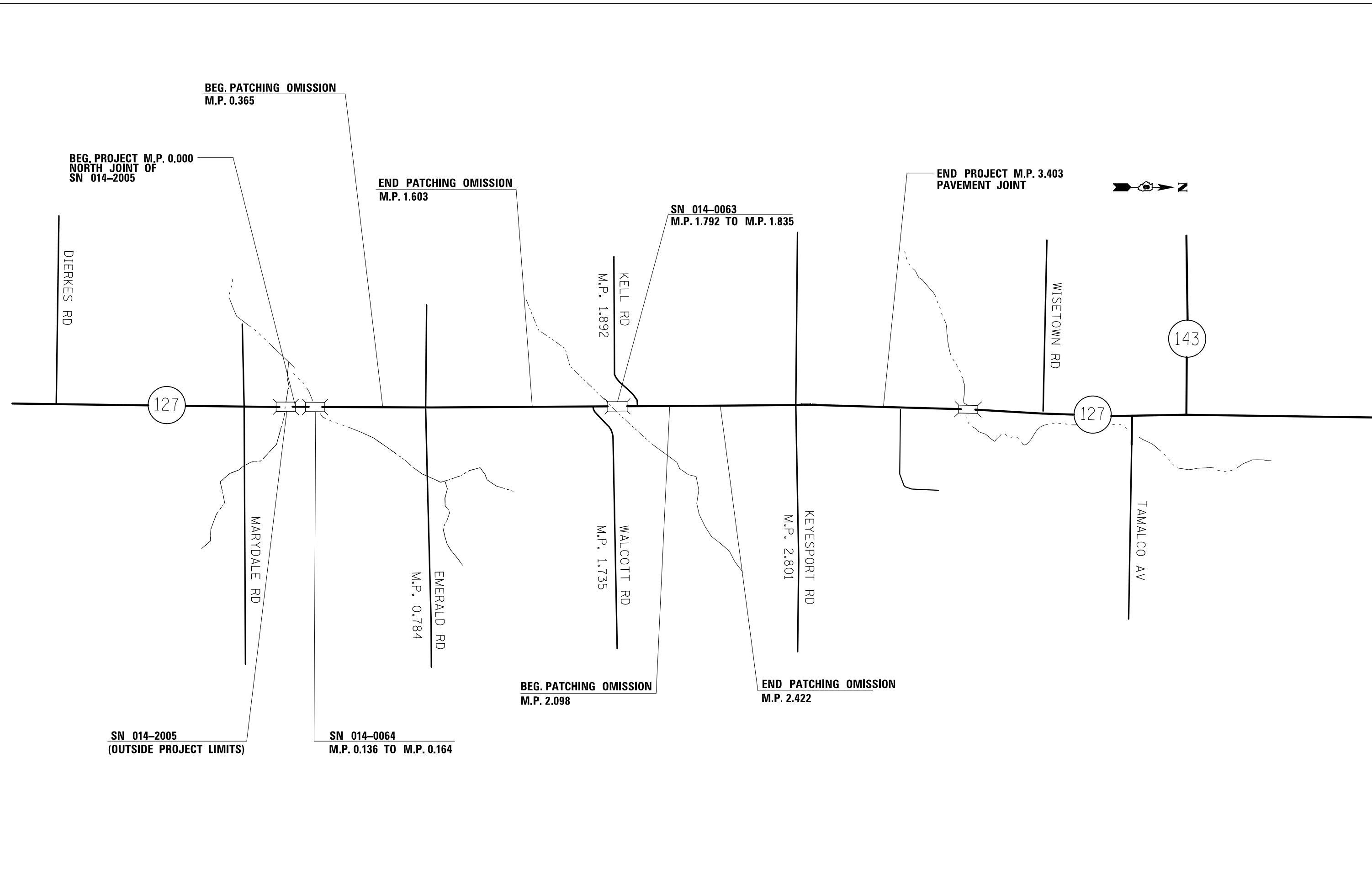
- 000001-06 STANDARD SYMBOLS, ABBREVIATIONS AND PATTERNS
- 442101-07 CLASS B PATCHES
- 701201-04 LANE CLOSURE 2L, 2W, DAY ONLY FOR SPEEDS  $\geq$  45 MPH
- 701311-03 LANE CLOSURE 2L, 2W MOVING OPERATIONS - DAY ONLY
- 701336-06 LANE CLOSURE 2L, 2W, WORK AREAS IN SERIES FOR SPEEDS  $\geq$  45 MPH
- 701901-03 TRAFFIC CONTROL DEVICES
- 780001-04 TYPICAL PAVEMENT MARKINGS

COMMITMENTS

NONE

FILE NAME = e:\pvc\work\psidot\grandberryha\08396060	USER NAME = grandberryha	DESIGNED -	REVISED -	<b>STATE OF ILLINOIS DEPARTMENT OF TRANSPORTATION</b>	<b>GENERAL NOTES, INDEX OF SHEETS, STANDARDS &amp; COMMITMENTS</b>				F.A.P. RTE.	SECTION	COUNTY	TOTAL SHEETS	SHEET NO.
	0876H34-sh1-plan.dgn	DRAWN -	REVISED -						42	(111)-1121-1	BOND&CLINTON	7	2
	PLOT SCALE = 100.0000' / 1" =	CHECKED -	REVISED -		CONTRACT NO. 76H34								
	PLOT DATE = 7/23/2014	DATE -	REVISED -		SCALE:	SHEET NO.	OF	SHEETS	STA.	TO STA.	FED. ROAD DIST. NO.	ILLINOIS	FED. AID PROJECT





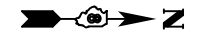
BEG. PROJECT M.P. 0.000  
NORTH JOINT OF  
SN 014-2005

BEG. PATCHING OMISSION  
M.P. 0.365

END PATCHING OMISSION  
M.P. 1.603

SN 014-0063  
M.P. 1.792 TO M.P. 1.835

END PROJECT M.P. 3.403  
PAVEMENT JOINT



DIERKES RD

127

MARYDALE RD

EMERALD RD  
M.P. 0.784

KELL RD  
M.P. 1.892

WALCOTT RD  
M.P. 1.735

KEYESPORT RD  
M.P. 2.801

WISETOWN RD

127

TAMALCO AV

143

SN 014-2005  
(OUTSIDE PROJECT LIMITS)

SN 014-0064  
M.P. 0.136 TO M.P. 0.164

BEG. PATCHING OMISSION  
M.P. 2.098

END PATCHING OMISSION  
M.P. 2.422

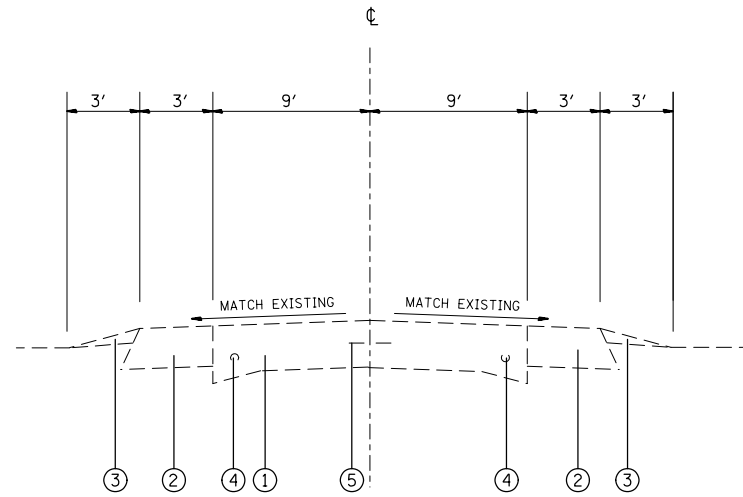
FILE NAME =	USER NAME = grandberryha	DESIGNED -	REVISED -
et:\pwork\pwork\grandberryha\d0396068	d0396068	DRAWN -	REVISED -
	PLOT SCALE = 100.0000' / in.	CHECKED -	REVISED -
	PLOT DATE = 7/23/2014	DATE -	REVISED -

**STATE OF ILLINOIS  
DEPARTMENT OF TRANSPORTATION**

**LOCATION MAP**

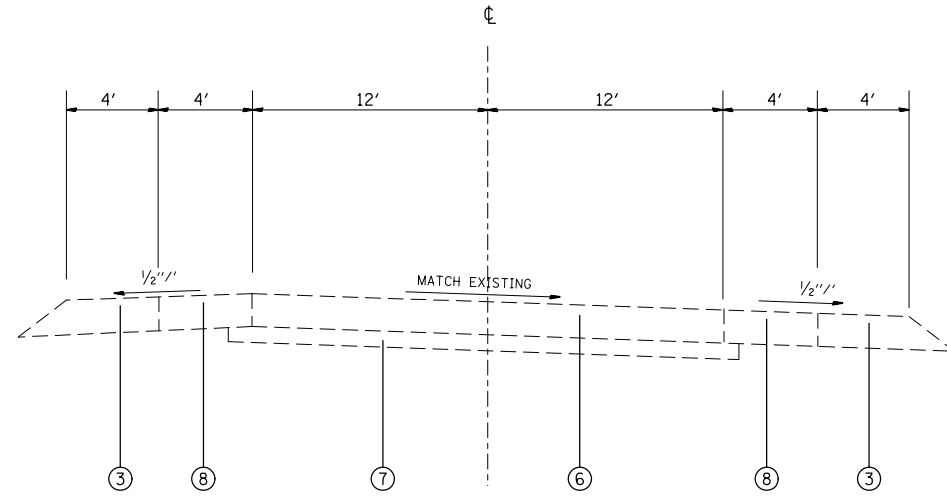
SCALE: SHEET NO. OF SHEETS STA. TO STA.

F.A.P. RTE.	SECTION	COUNTY	TOTAL SHEETS	SHEET NO.
42	(111,112)-I	BOND&CLINTON	7	4
CONTRACT NO. 76H34				
FED. ROAD DIST. NO. 8 ILLINOIS FED. AID PROJECT				



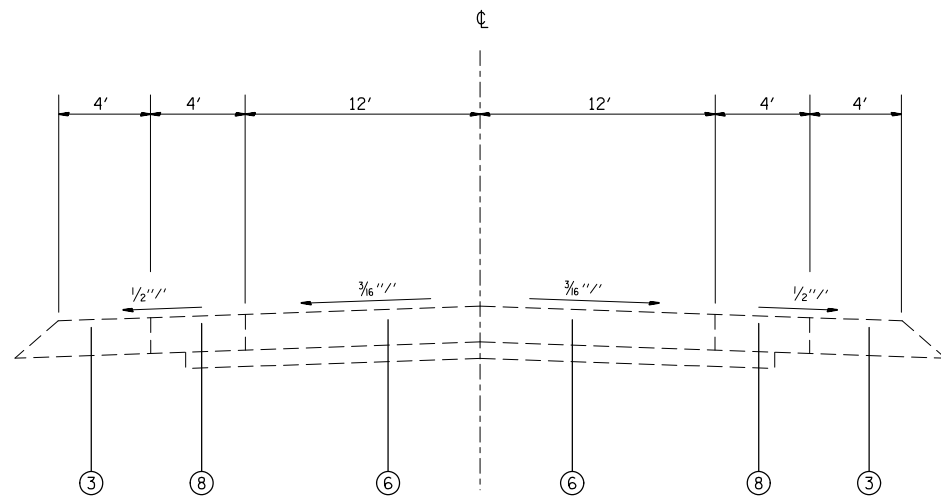
**TYPICAL SECTION (IL 127)**

M.P. 0.000 TO M.P. 0.136  
 M.P. 0.164 TO M.P. 0.365  
 M.P. 1.603 TO M.P. 1.792  
 M.P. 1.835 TO M.P. 2.098



**TYPICAL SECTION (IL 127)**

M.P. 2.476 TO M.P. 2.621  
 M.P. 3.245 TO M.P. 3.380



**TYPICAL SECTION (IL 127)**

M.P. 2.422 TO M.P. 2.476  
 M.P. 2.621 TO M.P. 3.245  
 M.P. 3.380 TO M.P. 3.403

**LEGEND**

- ① EXISTING PCC 9"-6"-9"
- ② EXISTING BASE COURSE WIDENING 8"
- ③ EXISTING AGGREGATE SHOULDER
- ④ EXISTING 3/4" DIAMETER BAR
- ⑤ EXISTING METAL JOINT
- ⑥ EXISTING PCC PAVEMENT 8"
- ⑦ EXISTING STABILIZED SUB-BASE 4"
- ⑧ EXISTING HMA SHOULDERS 8"

FILE NAME =	USER NAME = grandberryha	DESIGNED -	REVISED -
et:\pw\work\p\dot\grandberryha\d0396068	d876h34-sht-plan.dgn	DRAWN -	REVISED -
	PLOT SCALE = 100.0000' / 1in.	CHECKED -	REVISED -
	PLOT DATE = 7/23/2014	DATE -	REVISED -

STATE OF ILLINOIS  
 DEPARTMENT OF TRANSPORTATION

**TYPICAL SECTIONS**

SCALE: SHEET NO. OF SHEETS STA. TO STA.

F.A.P. RTE.	SECTION	COUNTY	TOTAL SHEETS	SHEET NO.
42	(111,112)-I	BOND&CLINTON	7	5
CONTRACT NO. 76H34				
FED. ROAD DIST. NO. 8 ILLINOIS FED. AID PROJECT				

# PATCHING SCHEDULE

LOCATION	NB/SB	LENGTH	WIDTH	CLASS B PAVEMENT PATCHES 9"	SAW CUTS	DOWEL BARS
				TYPE 2		
MILE PT.		(FEET)	(FEET)	(SQ YD)	(FOOT)	(EACH)
0.000	NB	10	12	13.3	56	20
0.000	SB	10	12	13.3	56	20
0.008	NB	6	12	8.0	48	20
0.008	SB	6	12	8.0	48	20
0.018	NB	6	12	8.0	48	20
0.018	SB	6	12	8.0	48	20
0.117	SB	6	12	8.0	48	20
0.136 TO 0.164 BRIDGE OMISSION						
0.238	NB	6	12	8.0	48	20
0.265	SB	6	12	8.0	48	20
0.304	SB	6	12	8.0	48	20
0.351	NB	6	12	8.0	48	20
0.351	SB	6	12	8.0	48	20
0.361	NB	6	12	8.0	48	20
0.364	SB	6	12	8.0	48	20
0.784	EMERALD RD					
1.609	NB	6	12	8.0	48	20
1.614	SB	6	12	8.0	48	20
1.629	NB	6	12	8.0	48	20
1.629	SB	6	12	8.0	48	20
SUBTOTAL				154.7	880	360

LOCATION	NB/SB	LENGTH	WIDTH	CLASS B PAVEMENT PATCHES 9"	SAW CUTS	DOWEL BARS
				TYPE 2		
1.652	SB	6	12	8.0	48	20
1.661	NB	6	12	8.0	48	20
1.661	SB	6	12	8.0	48	20
1.671	SB	6	12	8.0	48	20
1.680	NB	6	12	8.0	48	20
1.680	SB	6	12	8.0	48	20
1.689	NB	6	12	8.0	48	20
1.689	SB	6	12	8.0	48	20
1.700	NB	6	12	8.0	48	20
1.700	SB	6	12	8.0	48	20
1.704	NB	6	12	8.0	48	20
1.704	SB	6	12	8.0	48	20
1.708	NB	6	12	8.0	48	20
1.718	NB	6	12	8.0	48	20
1.724	SB	6	12	8.0	48	20
1.728	NB	6	12	8.0	48	20
1.735	WALCOTT RD					
1.738	NB	6	12	8.0	48	20
1.792 TO 1.835 BRIDGE OMISSION						
1.885	SB	6	12	8.0	48	20
1.893	NB	6	12	8.0	48	20
SUBTOTAL				152.0	912	380

# PATCHING SCHEDULE

LOCATION	NB/SB	LENGTH	WIDTH	CLASS B PAVEMENT PATCHES 9" TYPE 2	SAW CUTS	DOWEL BARS
1.937	NB	6	12	8.0	48	20
1.941	NB	6	12	8.0	48	20
1.941	SB	6	12	8.0	48	20
1.946	NB	6	12	8.0	48	20
1.946	SB	6	12	8.0	48	20
1.952	SB	6	12	8.0	48	20
1.956	SB	6	12	8.0	48	20
1.961	SB	6	12	8.0	48	20
1.966	SB	6	12	8.0	48	20
1.978	NB	6	12	8.0	48	20
1.993	NB	6	12	8.0	48	20
2.003	NB	6	12	8.0	48	20
2.012	NB	6	12	8.0	48	20
2.022	NB	6	12	8.0	48	20
2.031	NB	6	12	8.0	48	20
2.031	SB	6	12	8.0	48	20
2.036	NB	6	12	8.0	48	20
2.036	SB	6	12	8.0	48	20
2.038	NB	6	12	8.0	48	20
2.041	NB	6	12	8.0	48	20
2.041	SB	6	12	8.0	48	20
<b>SUBTOTAL</b>				168.0	1008	420

LOCATION	NB/SB	LENGTH	WIDTH	CLASS B PAVEMENT PATCHES 9" TYPE 2	SAW CUTS	DOWEL BARS
2.050	SB	6	12	8.0	48	20
2.060	NB	6	12	8.0	48	20
2.060	SB	6	12	8.0	48	20
2.069	NB	6	12	8.0	48	20
2.069	SB	6	12	8.0	48	20
2.079	NB	6	12	8.0	48	20
2.079	SB	6	12	8.0	48	20
2.088	NB	6	12	8.0	48	20
2.432	NB	6	12	8.0	48	20
2.452	NB	6	12	8.0	48	20
2.455	NB	6	12	8.0	48	20
2.499	NB	6	12	8.0	48	20
2.523	NB	6	12	8.0	48	20
2.523	SB	6	12	8.0	48	20
2.528	NB	6	12	8.0	48	20
2.547	NB	6	12	8.0	48	20
2.556	NB	6	12	8.0	48	20
2.582	NB	6	12	8.0	48	20
2.594	NB	6	12	8.0	48	20
2.614	NB	6	12	8.0	48	20
2.633	NB	6	12	8.0	48	20
2.642	NB	6	12	8.0	48	20
2.651	NB	6	12	8.0	48	20
2.665	NB	6	12	8.0	48	20
2.680	NB	6	12	8.0	48	20
2.686	NB	6	12	8.0	48	20
2.691	NB	6	12	8.0	48	20
2.719	NB	6	12	8.0	48	20
2.738	SB	6	12	8.0	48	20
2.749	NB	6	12	8.0	48	20
2.749	SB	6	12	8.0	48	20
<b>2.801</b>	<b>KEYESPORT RD</b>					
<b>SUBTOTAL</b>				248	1488	620
<b>TOTAL</b>				723	4288	1780
<b>15% ANT. FAILURES</b>				108	643	267
<b>TOTAL + 15%</b>				831	4931	2047

LOCATION			PAINT PAVEMENT MARKING		RAISED REFLECTIVE PAVEMENT MARKERS
			4"		
M.P.	TO	M.P.	EDGE LINE (FOOT)	SKIP DASH LINE (FOOT)	(EACH)
0.000	TO	3.403	542	542	8

NOTE: PAVEMENT MARKING AND RAISED REFLECTIVE PAVEMENT MARKERS SHALL BE APPLIED IN THE PATCHING AREA ONLY