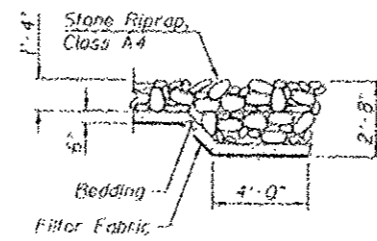
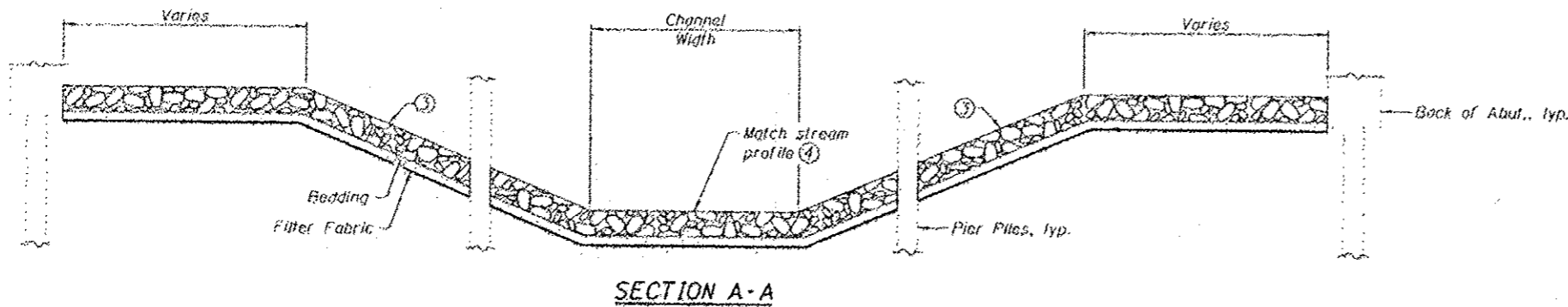
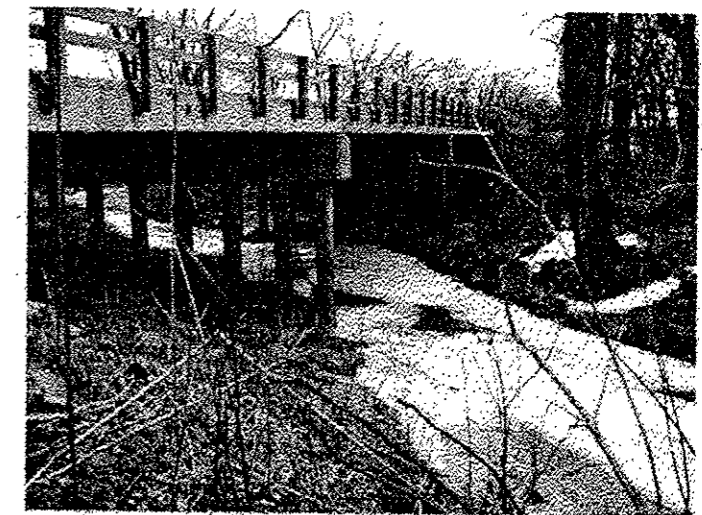


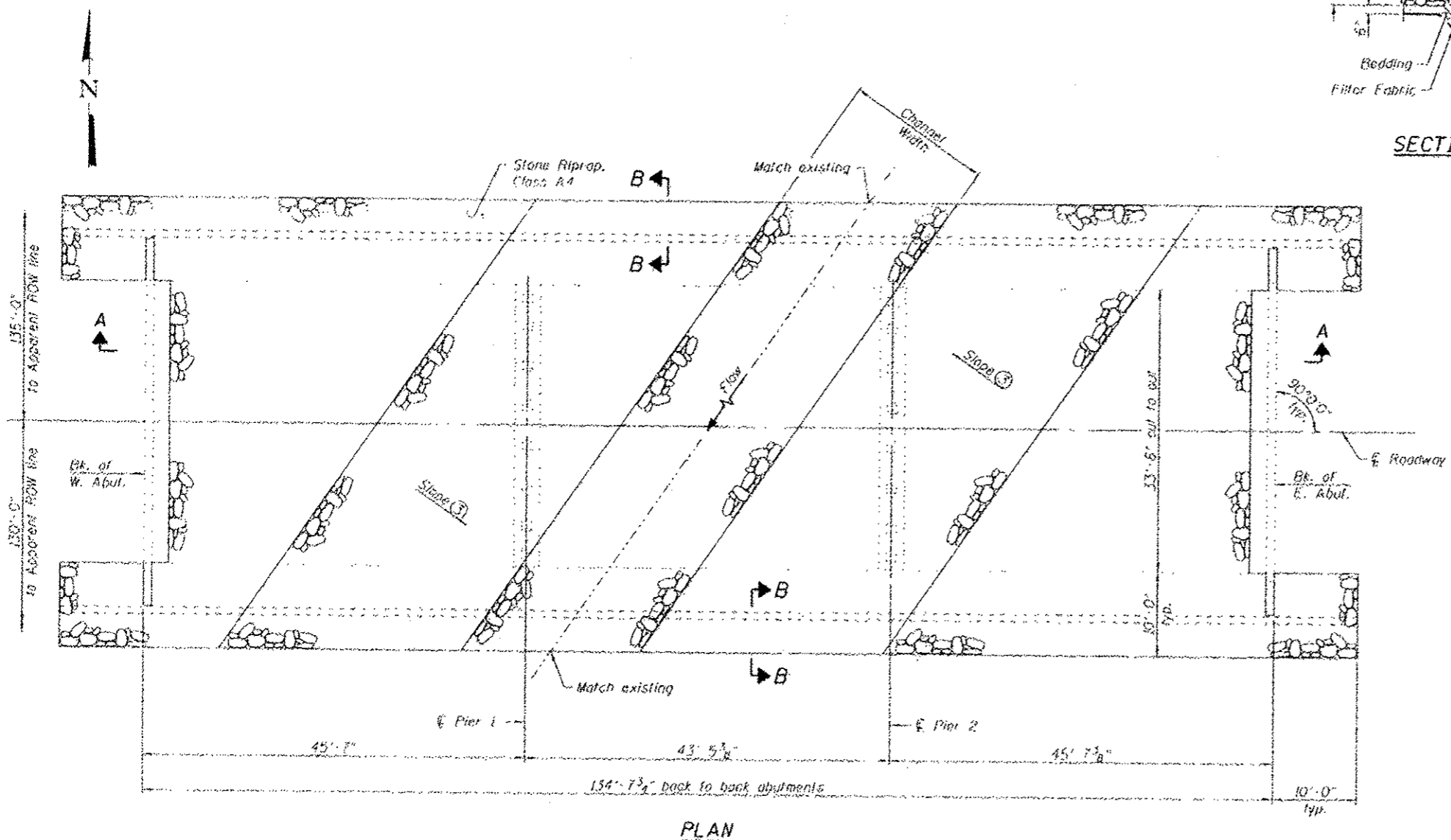
Existing Structure: S.M. 003-0025 consists of a three span precast prestressed concrete deck beam superstructure supported on open abutments founded on precast concrete piles and individual pile bent piers founded on precast concrete piles.



- Notes:
- 1 The Contractor shall field verify existing dimensions, details, and conditions affecting new construction and make necessary approved adjustments prior to construction or ordering of materials. Such variations shall not be cause for additional compensation for a change in scope of the work, however, the Contractor will be paid for the quantity actually furnished based upon the unit price bid for the work.
 - 2 Layout of the slope protection system may be varied to suit ground conditions in the field as directed by the Engineer. Slope protection system shall be placed in a manner that does not reduce the total waterway opening.
 - 3 Grade channel bank to a slope that will provide a stable base for riprap as directed by the Engineer. Cost included in Channel Excavation.
 - 4 Grade streambed so that the top of the Stone Riprap approximately matches the existing stream profile as directed by the Engineer. Cost included in Channel Excavation.
 - 5 Additional excavation and reshaping of channel and bank may be required to facilitate proper placement of Stone Riprap as directed by the Engineer.
 - 6 Channel Excavation shall include the cost of removing and disposing of existing riprap, brick, block, rubble, or other material as encountered.
 - 7 Contractor to locate existing underground utilities. Where existing underground utilities conflict with riprap placement, the Contractor shall adjust the layout as directed by the Engineer.
 - 8 Elevation view shown as of January 30, 2014. Actual conditions may vary.
 - 9 Estimated quantities. Actual quantities to be determined in the field.



ELEVATION VIEW 8
(Looking West)

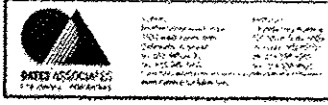


TOTAL BILL OF MATERIAL 9

CODE NO.	ITEM	UNIT	TOTAL
20300100	Channel Excavation	Cu. Yd.	20
28100107	Stone Riprap, Class A4	Sq. Yd.	860
28200200	Filter Fabric	Sq. Yd.	860

DANIEL GEORGE LUTZ
067-060382
LICENSED PROFESSIONAL ENGINEER
OF ILLINOIS
D. D. Lutz
DATE: 8/15/2014
EXPIRATION: 11/30/2015

IL ROUTE 140 OVER INDIAN CREEK
STRUCTURE NO. 003-0025



USER NAME	DESIGNED	MAC	REVISED
	CHECKED	JAD	REVISED
	DRAWN	JAD	REVISED
	CHECKED	JAD	REVISED

STATE OF ILLINOIS
DEPARTMENT OF TRANSPORTATION

F.A. RTL.	SECTION	COUNTY	TOTAL SHEETS	SHEET NO.
			9	7
BOND				
CONTRACT NO. 76H42				