

F.A.P. RTE.	SECTION	COUNTY	TOTAL SHEETS	SHEET NO.
877	100B-1	WHITE	54	1
		ILLINOIS	CONTRACT NO. 78231	

INDEX OF SHEETS

SHEET NO. DESCRIPTION

ROADWAY PLANS

1. COVER SHEET
2. GENERAL NOTES AND STANDARDS
- 3-7. SUMMARY OF QUANTITIES
- 8-9. TYPICAL SECTIONS
10. SCHEDULE OF QUANTITIES
- 11-12. IL RTE 141 PLAN AND PROFILE
13. DETOUR PLAN
14. ROAD CLOSURE TRAFFIC CONTROL DETAIL
15. EROSION AND SEDIMENT CONTROL PLAN
16. BUTT JOINT DETAIL
17. STEP CONSTRUCTION DETAIL
18. SEEDING AND MULCHING DETAIL
19. TEMPORARY DITCH CHECK DETAIL

STRUCTURE PLANS

SN 097-0027

20. GENERAL PLAN & ELEVATION
21. GENERAL DATA
- 22-23. TOP OF SLAB ELEVATIONS
24. TOP OF WEST APPROACH SLAB ELEVATIONS
25. TOP OF EAST APPROACH SLAB ELEVATIONS
26. SUPERSTRUCTURE
27. SUPERSTRUCTURE DETAILS
- 28-29. APPROACH SLAB DETAILS
30. PREFORMED JOINT STRIP SEAL
31. STEEL FRAMING PLAN
32. STEEL DETAILS
- 33-34. BEARING DETAILS
35. ABUTMENT REMOVAL AND REPAIRS
- 36-37. ABUTMENT DETAILS
38. PIERS 1 & 2
39. BAR SPLICER ASSEMBLY DETAILS
- 40-41. BORING LOGS

EXISTING STRUCTURE PLANS

SN 097-0027

- 42-47. EXISTING STRUCTURE PLANS - FOR INFORMATION ONLY

CROSS SECTIONS

- 48-54. IL RTE 141 CROSS SECTIONS

**DESIGN DESIGNATION:
N.A.**

J.U.L.I.E.
JOINT UTILITY LOCATION INFORMATION FOR EXCAVATION
1-800-892-0123
OR 811

DISTRICT 9 NO. (618)549-2171
PROJECT ENGINEER: DAVID PICHE
PROJECT MANAGER

CONTRACT NO. 78231

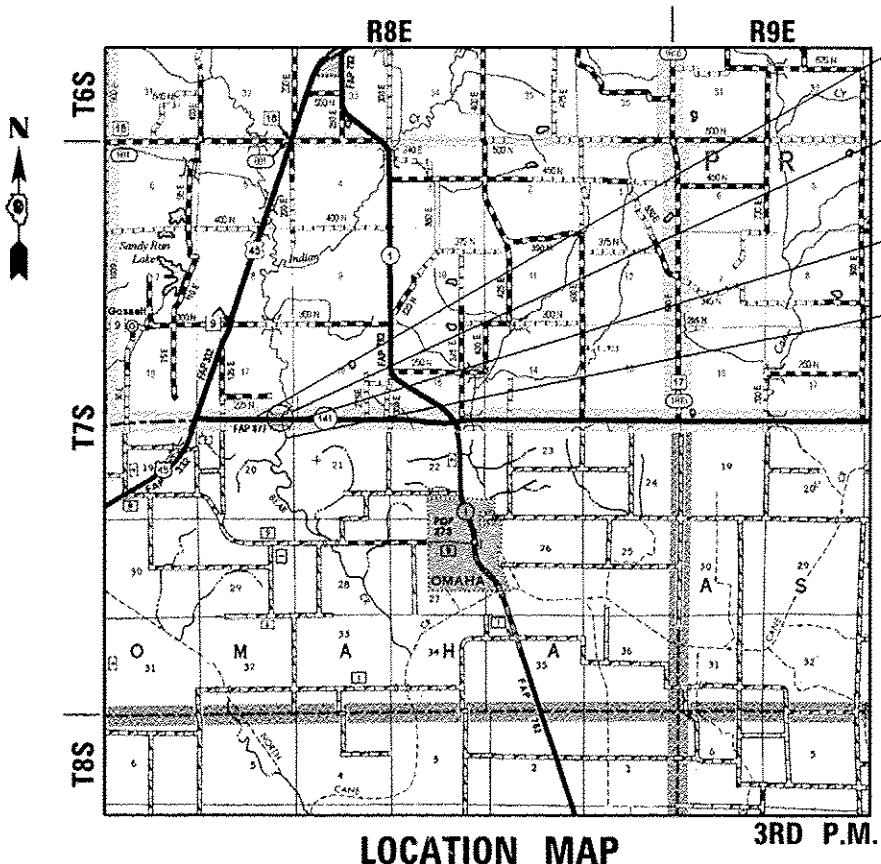
**STATE OF ILLINOIS
DEPARTMENT OF TRANSPORTATION
DIVISION OF HIGHWAYS**

**PROPOSED
HIGHWAY PLANS**

**FAP ROUTE 877 (IL 141)
SECTION 100B-1
PROJECT ACF-0877 (014)
WHITE COUNTY**

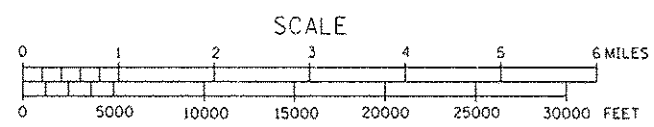
C-99-010-11

**BRIDGE DECK REPLACEMENT
OVER BEAR CREEK**



LOCATION MAP

3RD P.M.



GROSS LENGTH = 544.00 FT. = 0.103 MI
NET LENGTH = 544.00 FT. = 0.103 MI

- IMPROVEMENTS BEGIN STA 45+98
- EXISTING SN 097-0027 STATION 48+70.00 PROPOSED SN 097-0027 THREE SPAN BRIDGE
- IMPROVEMENTS END STA 51+42
- BEAR CREEK

MICHAEL C. VAIL
062-049256
LICENSED PROFESSIONAL ENGINEER
STATE OF ILLINOIS
Michael C. Vail
SIGNATURE
7/11/2014
DATE

LIC. EXP. DATE : 11-30-15
QUIGG ENGINEERING INC.



FUNCTIONAL CLASSIFICATION: MINOR ARTERIAL (NON-URBAN)
DESIGN SPEED: 55 mph
POSTED SPEED: 55 mph
ADT: 1480 (2011)
PV: 89.7%
TRUCKS: 10.3%
TOWNSHIP: INDIAN CREEK

STATE OF ILLINOIS
DEPARTMENT OF TRANSPORTATION
DIVISION OF HIGHWAYS
SUBMITTED July 21 20 14
Jeffrey L. Keirn
DEPUTY DIRECTOR OF HIGHWAYS, REGION ENGINEER
Oct 17 20 14
John D. Baranzelli, PE
ENGINEER OF DESIGN AND ENVIRONMENT
Oct 17 20 14
Omer Osman, PE
DIRECTOR OF HIGHWAYS, CHIEF ENGINEER

**PRINTED BY THE AUTHORITY
OF THE STATE OF ILLINOIS**