

**NORTH EDGE OF SHOULDER  
OR SOUTH FACE OF PARAPET**

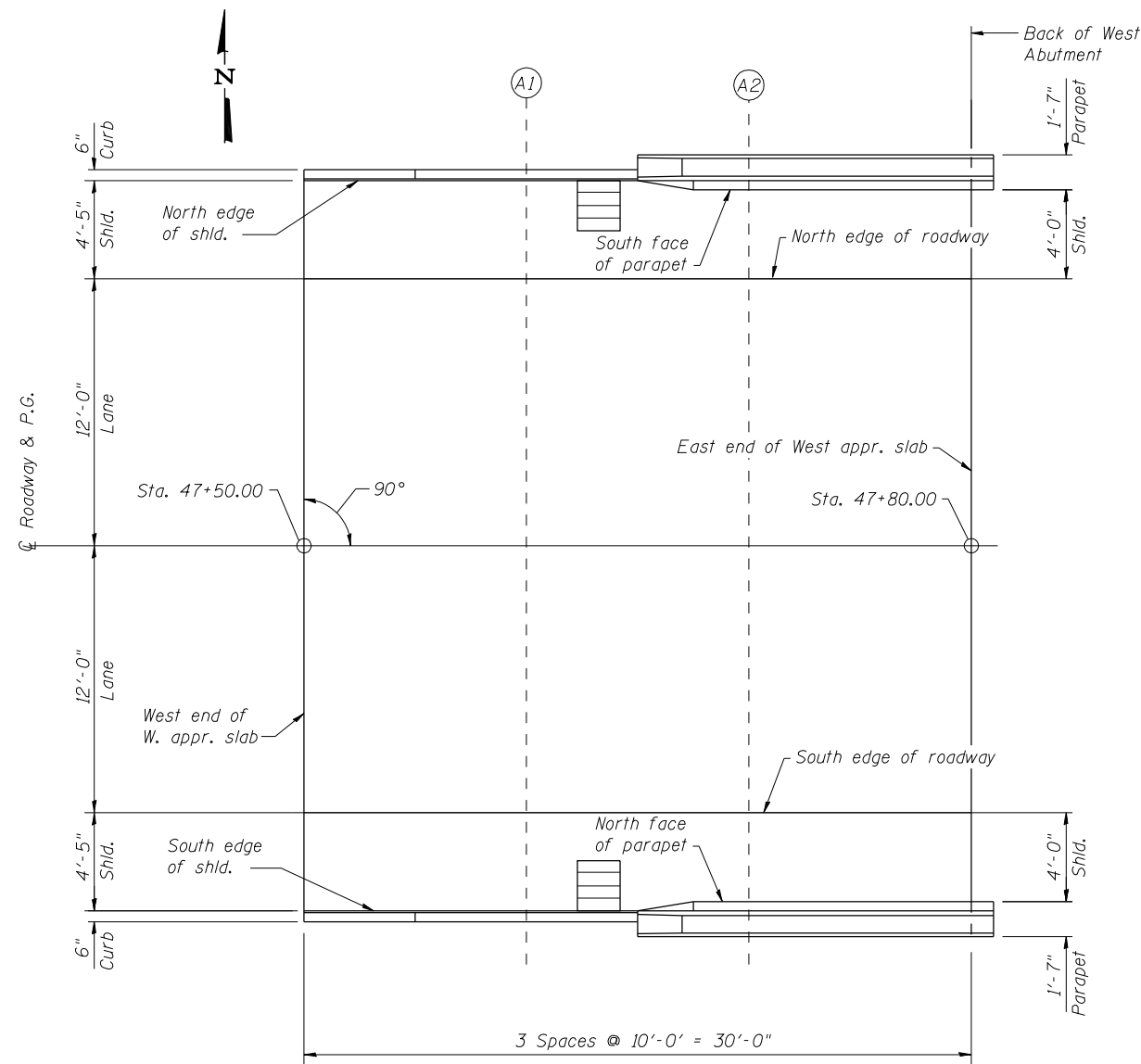
Location	Station	Offset (ft.)	Theoretical Grade Elevations
W. End W. Appr. Slab	47+50.00	-16.42	382.06
A1	47+60.00	-16.42	382.06
A2	47+70.00	-16.00	382.07
E. End W. Appr. Slab	47+80.00	-16.00	382.07

**NORTH EDGE OF ROADWAY**

Location	Station	Offset (ft.)	Theoretical Grade Elevations
W. End W. Appr. Slab	47+50.00	-12.00	382.15
A1	47+60.00	-12.00	382.15
A2	47+70.00	-12.00	382.15
E. End W. Appr. Slab	47+80.00	-12.00	382.15

**☐ ROADWAY & P.G.**

Location	Station	Offset (ft.)	Theoretical Grade Elevations
W. End W. Appr. Slab	47+50.00	0.00	382.34
A1	47+60.00	0.00	382.34
A2	47+70.00	0.00	382.34
E. End W. Appr. Slab	47+80.00	0.00	382.34



**PLAN**

**SOUTH EDGE OF ROADWAY**

Location	Station	Offset (ft.)	Theoretical Grade Elevations
W. End W. Appr. Slab	47+50.00	12.00	382.15
A1	47+60.00	12.00	382.15
A2	47+70.00	12.00	382.15
E. End W. Appr. Slab	47+80.00	12.00	382.15

**SOUTH EDGE OF SHOULDER  
OR NORTH FACE OF PARAPET**

Location	Station	Offset (ft.)	Theoretical Grade Elevations
W. End W. Appr. Slab	47+50.00	16.42	382.06
A1	47+60.00	16.42	382.06
A2	47+70.00	16.00	382.07
E. End W. Appr. Slab	47+80.00	16.00	382.07



USER NAME = kah	DESIGNED - SHL 02/13	REVISED -
ESCA PROJECT NO. 988.14	CHECKED - RDP 02/13	REVISED -
	DRAWN - DWH 02/13	REVISED -
PLOT DATE = 7/3/2014 8:38:24 AM	CHECKED - SHL 05/13	REVISED -

**STATE OF ILLINOIS  
DEPARTMENT OF TRANSPORTATION**

**TOP OF WEST APPROACH SLAB ELEVATIONS  
STRUCTURE NO. 097-0027**

SHEET NO. 5 OF 22 SHEETS

F.A.P. RTE.	SECTION	COUNTY	TOTAL SHEETS	SHEET NO.
877	100B-1	WHITE	54	24
CONTRACT NO. 78231			ILLINOIS FED. AID PROJECT AID	