

NORTH EDGE OF SHOULDER
OR SOUTH FACE OF PARAPET

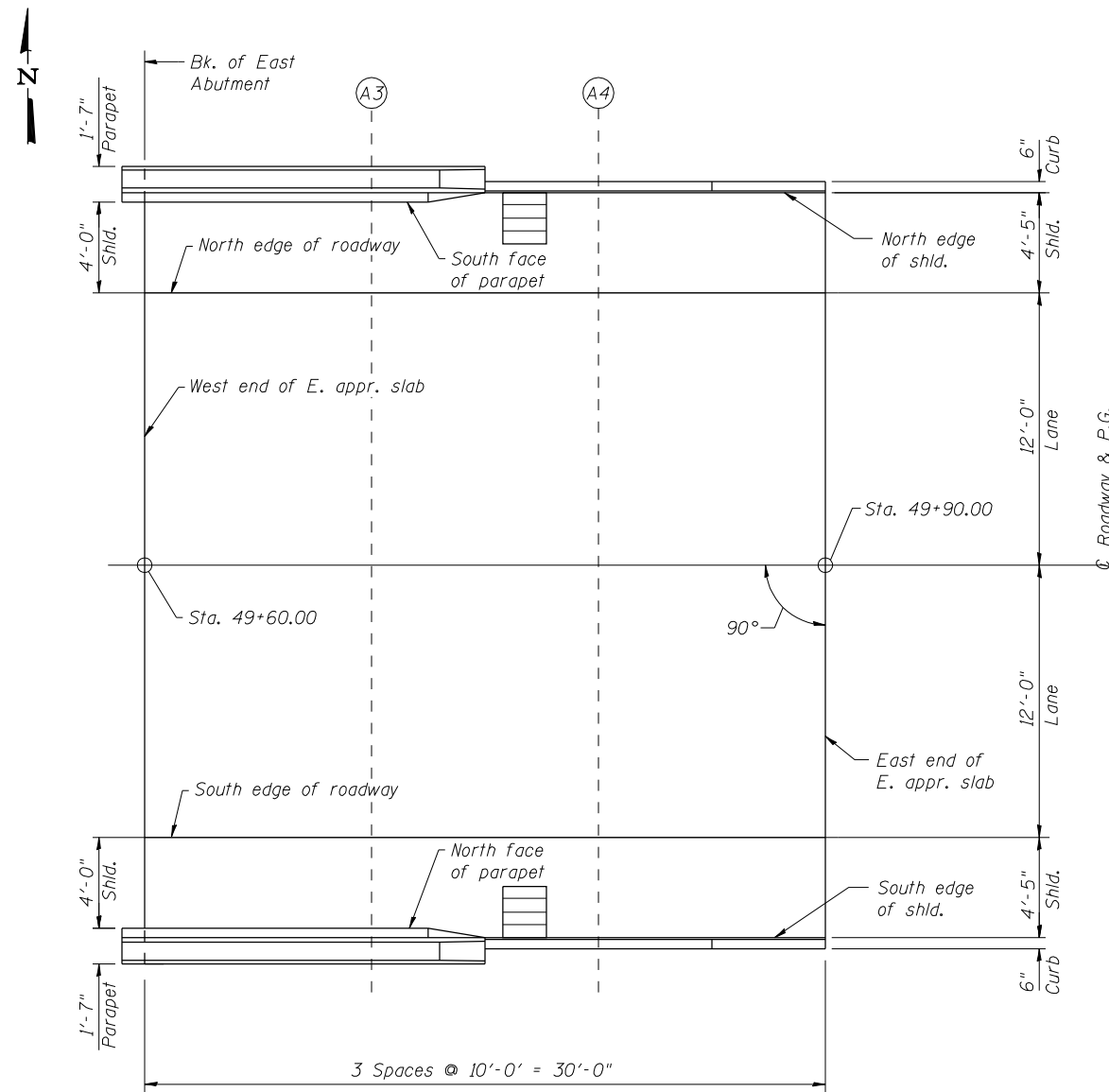
Location	Station	Offset (ft.)	Theoretical Grade Elevations
W. End E. Appr. Slab	49+60.00	-16.00	382.07
A3	49+70.00	-16.00	382.07
A4	49+80.00	-16.42	382.06
E. End E. Appr. Slab	49+90.00	-16.42	382.06

NORTH EDGE OF ROADWAY

Location	Station	Offset (ft.)	Theoretical Grade Elevations
W. End E. Appr. Slab	49+60.00	-12.00	382.15
A3	49+70.00	-12.00	382.15
A4	49+80.00	-12.00	382.15
E. End E. Appr. Slab	49+90.00	-12.00	382.15

☉ ROADWAY & P.G.

Location	Station	Offset (ft.)	Theoretical Grade Elevations
W. End E. Appr. Slab	49+60.00	0.00	382.34
A3	49+70.00	0.00	382.34
A4	49+80.00	0.00	382.34
E. End E. Appr. Slab	49+90.00	0.00	382.34



PLAN

SOUTH EDGE OF ROADWAY

Location	Station	Offset (ft.)	Theoretical Grade Elevations
W. End E. Appr. Slab	49+60.00	12.00	382.15
A3	49+70.00	12.00	382.15
A4	49+80.00	12.00	382.15
E. End E. Appr. Slab	49+90.00	12.00	382.15

SOUTH EDGE OF SHOULDER
OR NORTH FACE OF PARAPET

Location	Station	Offset (ft.)	Theoretical Grade Elevations
W. End E. Appr. Slab	49+60.00	16.00	382.07
A3	49+70.00	16.00	382.07
A4	49+80.00	16.42	382.06
E. End E. Appr. Slab	49+90.00	16.42	382.06



USER NAME = kah	DESIGNED - SHL 02/13	REVISED -
ESCA PROJECT NO. 988.14	CHECKED - RDP 02/13	REVISED -
	DRAWN - DWH 02/13	REVISED -
PLOT DATE = 7/3/2014 8:38:30 AM	CHECKED - SHL 05/13	REVISED -

**STATE OF ILLINOIS
DEPARTMENT OF TRANSPORTATION**

**TOP OF EAST APPROACH SLAB ELEVATIONS
STRUCTURE NO. 097-0027**

SHEET NO. 6 OF 22 SHEETS

F.A.P. RTE.	SECTION	COUNTY	TOTAL SHEETS	SHEET NO.
877	100B-1	WHITE	54	25
ILLINOIS FED. AID PROJECT AID			CONTRACT NO. 78231	