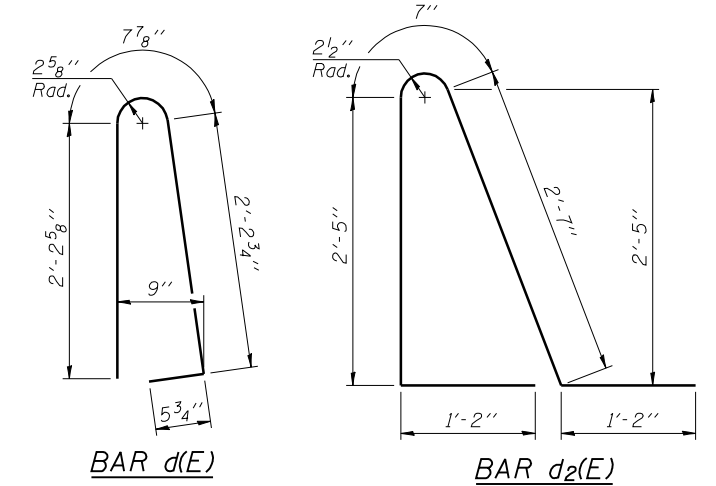
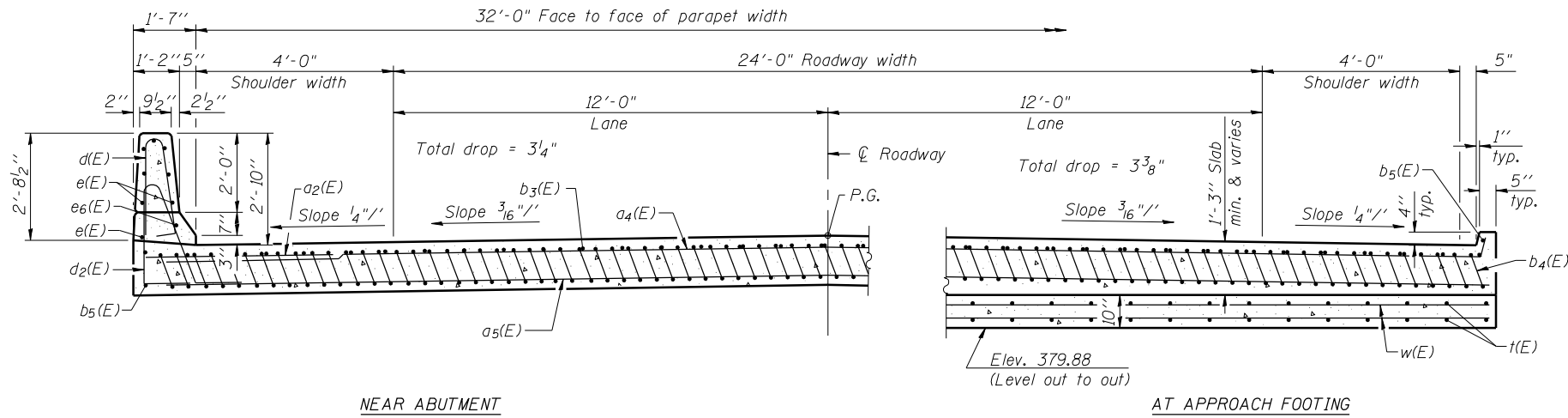
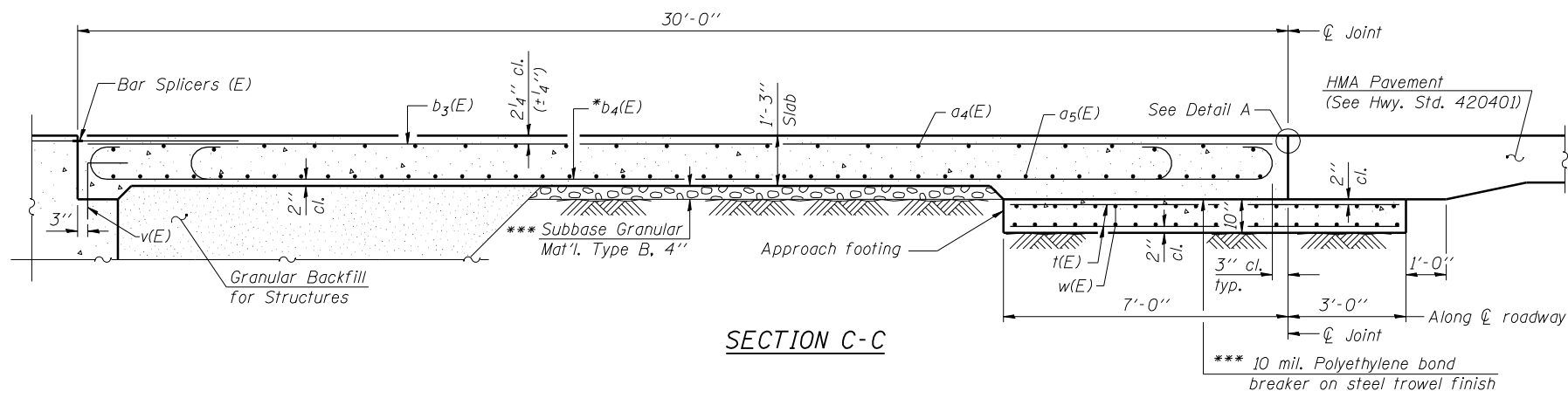
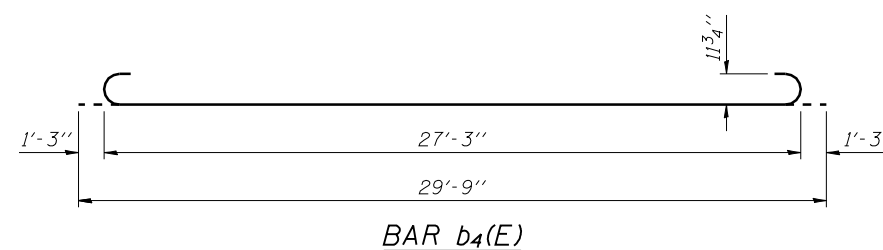
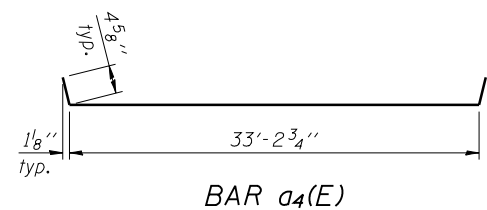
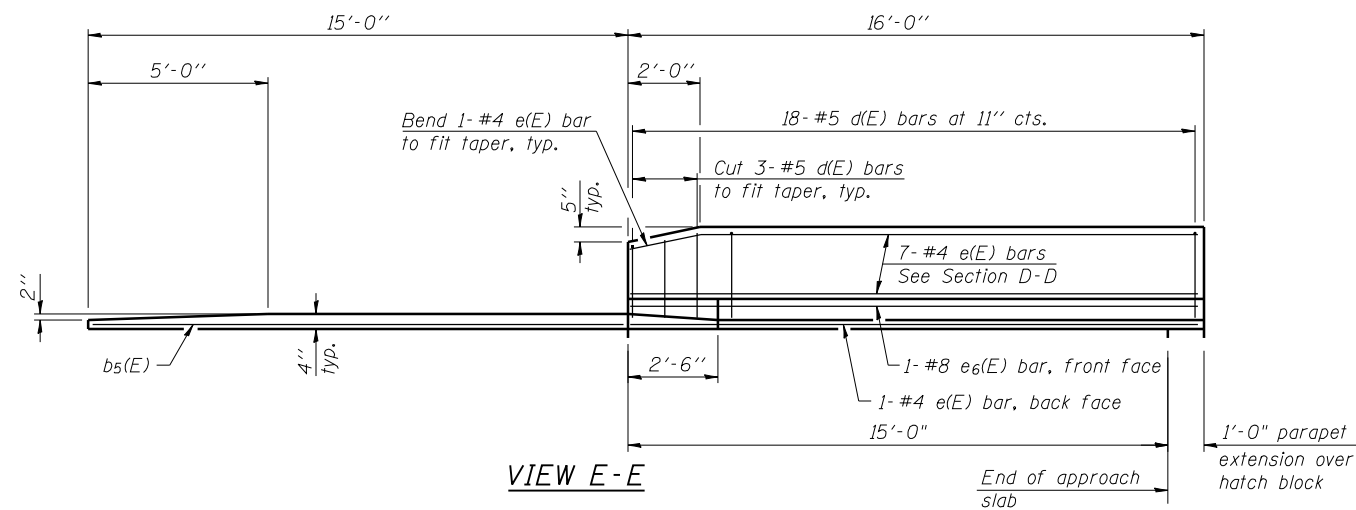


Notes:
 See sheet 9 of 22 for Detail A and View B-B.
 Approach slab and parapet concrete shall be paid for as Concrete Superstructure.
 Approach footing concrete shall be paid for as Concrete Structures.
 Reinforcement shall be paid for as Reinforcement Bars, Epoxy Coated.
 For v(E) bar details, see sheet 18 of 22.
 The approach footing maximum applied service bearing pressure (Qmax) = 2.0 ksf.
 For bar splicer details, see sheet 20 of 22.
 Cost of excavation for approach footing included with Concrete Structures.
 For Granular Backfill for Structures and drainage treatment details, see sheet 2 of 22.
 For additional parapet details, see sheet 8 of 22.



* Tilt #9 b4(E) bars as required to maintain clearance.
 *** Cost included with Concrete Superstructure.



**TWO APPROACHES
 BILL OF MATERIAL**

Bar	No.	Size	Length	Shape
a2(E)	48	#6	6'-6"	—
a4(E)	50	#4	34'-0"	—
a5(E)	92	#5	33'-6"	—
b3(E)	56	#4	29'-8"	—
b4(E)	162	#9	29'-9"	—
b5(E)	8	#4	14'-8"	—
d(E)	72	#5	5'-7"	U
d2(E)	68	#5	7'-11"	U
e(E)	32	#4	15'-8"	—
e6(E)	4	#8	15'-8"	—
t(E)	136	#4	9'-8"	—
w(E)	80	#5	33'-6"	—
Concrete Structures			Cu. Yd.	20.9
Concrete Superstructure			Cu. Yd.	108.7
Reinforcement Bars, Epoxy Coated			Pound	27550

(Sheet 2 of 2)



USER NAME = kah	DESIGNED - SHL	02/13	REVISED -
ESCA PROJECT NO. 988.14	CHECKED - RDP	02/13	REVISED -
PLOT DATE = 7/3/2014	DRAWN - DWH	02/13	REVISED -
8:39:03 AM	CHECKED - SHL	05/13	REVISED -

**STATE OF ILLINOIS
 DEPARTMENT OF TRANSPORTATION**

**BRIDGE APPROACH SLAB DETAILS
 STRUCTURE NO. 097-0027**

SHEET NO. 10 OF 22 SHEETS

F.A.P. RTE.	SECTION	COUNTY	TOTAL SHEETS	SHEET NO.
877	100B-1	WHITE	54	29
CONTRACT NO. 78231				

ILLINOIS FED. AID PROJECT AID