

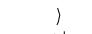
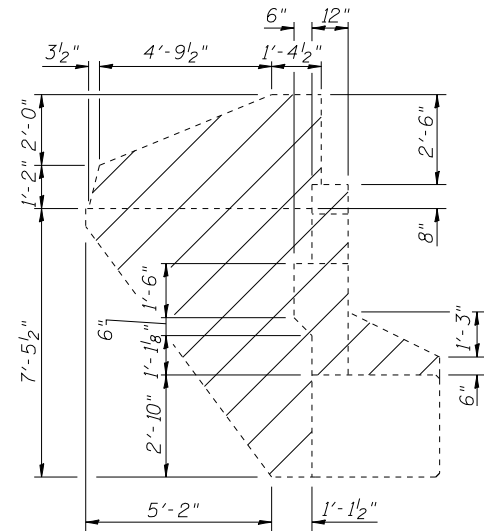
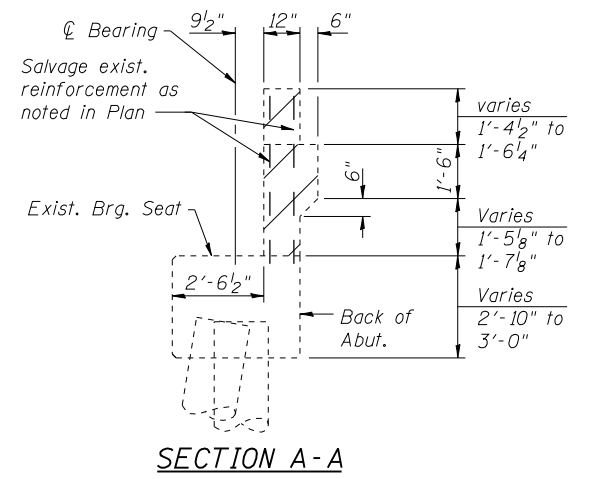
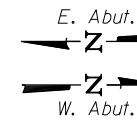
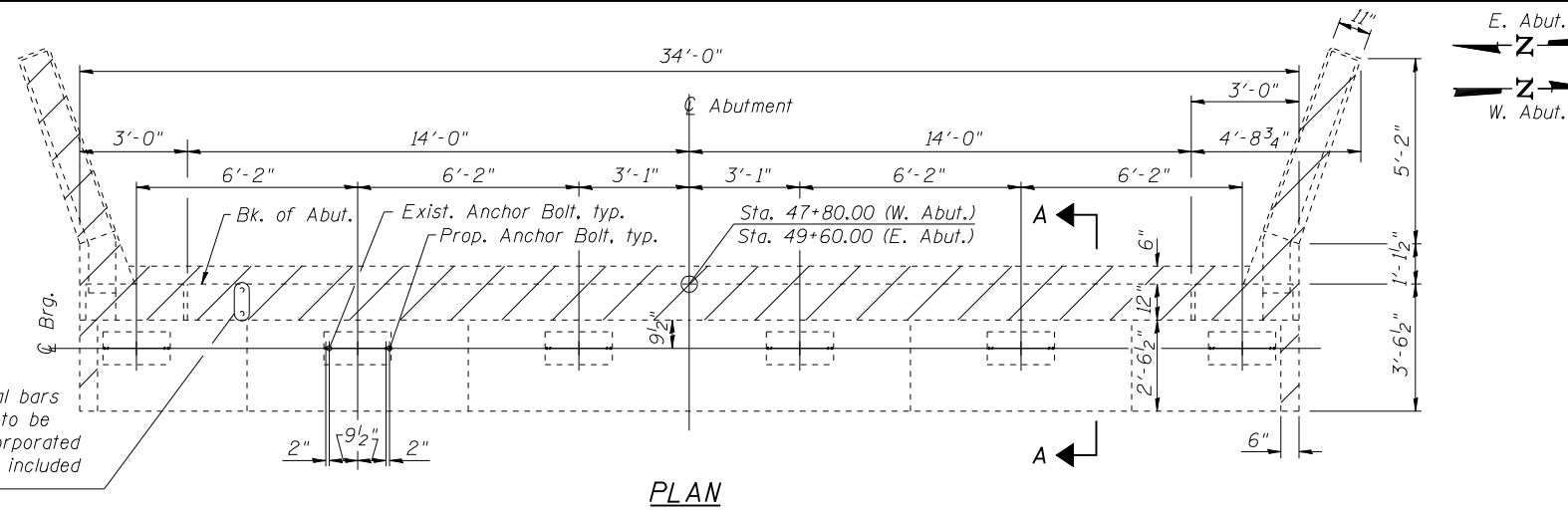


LEGEND

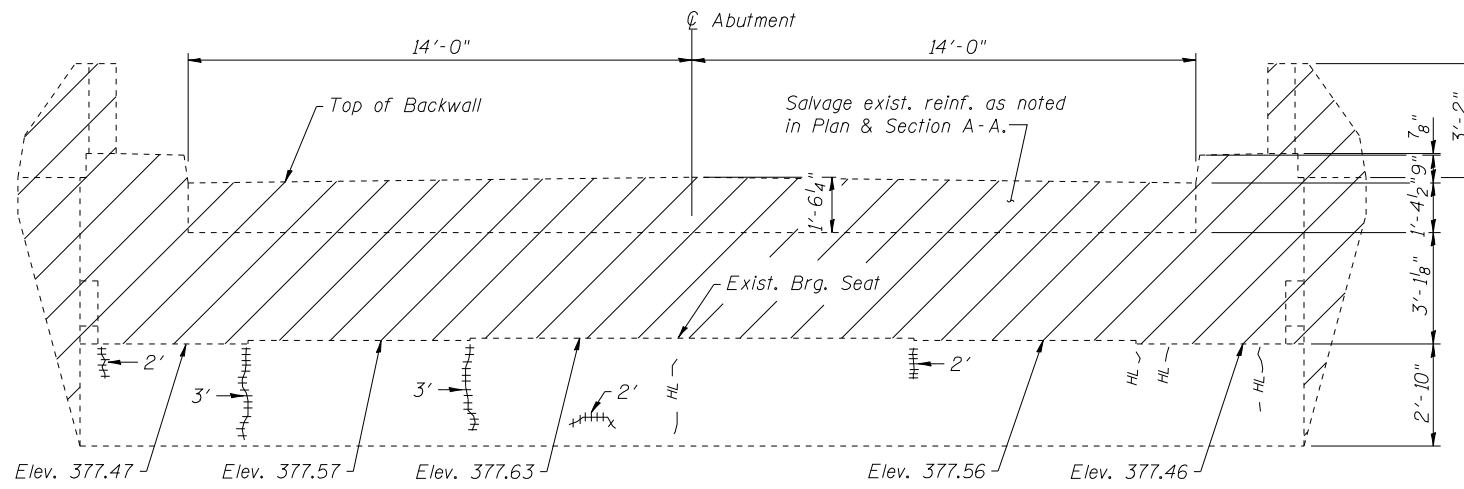
-  Concrete Removal
-  Epoxy Crack Injection
-  Hairline crack - not to be sealed

Note:
Crack widths are $\frac{1}{8}$ " \pm $\frac{1}{16}$ " unless noted otherwise.

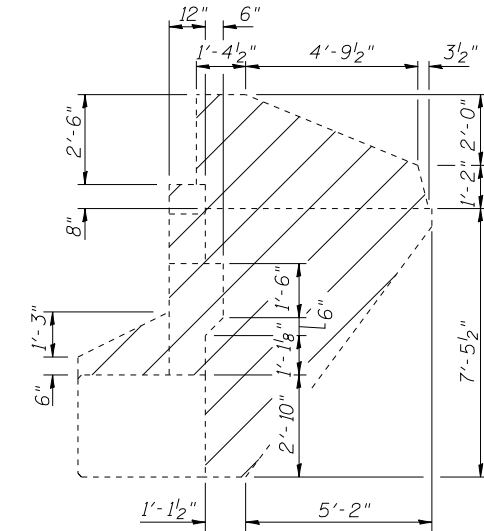
± 28 Existing straight vertical bars each face to remain. Bars to be cleaned, straightened, & incorporated into new construction. Cost included with Concrete Removal.



SOUTH END



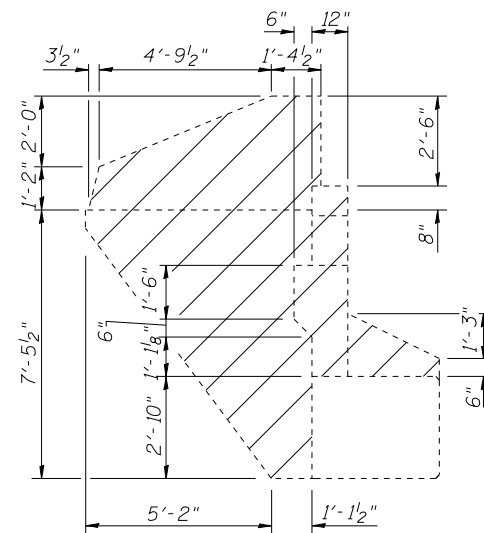
ELEVATION WEST ABUTMENT
(Looking West)



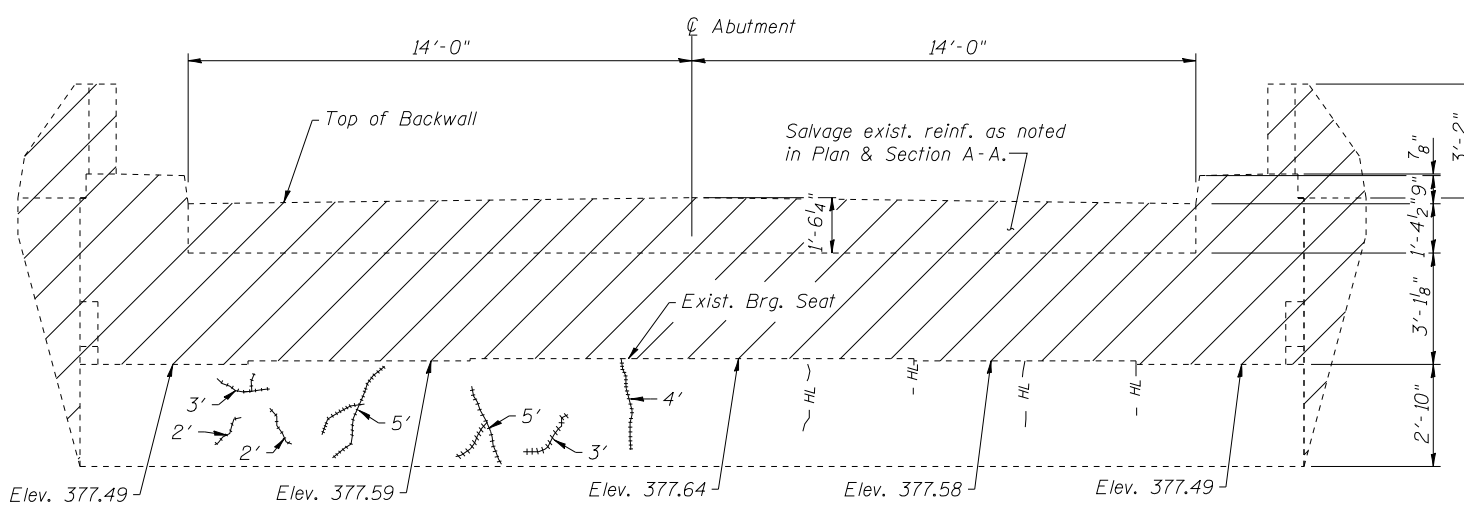
NORTH END

WEST ABUTMENT
BILL OF MATERIAL

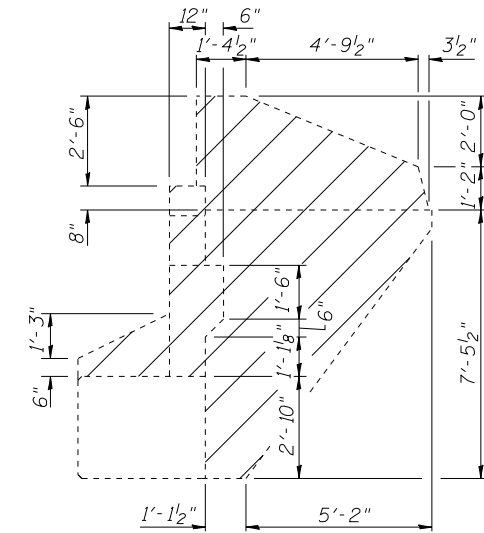
Item	Unit	Quantity
Concrete Removal	Cu. Yd.	9.9
Epoxy Crack Injection	Foot	12



NORTH END



ELEVATION EAST ABUTMENT
(Looking East)



SOUTH END

EAST ABUTMENT
BILL OF MATERIAL

Item	Unit	Quantity
Concrete Removal	Cu. Yd.	9.9
Epoxy Crack Injection	Foot	24



USER NAME = kah	DESIGNED - SHL	02/13	REVISED -
ESCA PROJECT NO. 988.14	CHECKED - RDP	02/13	REVISED -
PLOT DATE = 7/3/2014	DRAWN - DWH	02/13	REVISED -
8:39:46 AM	CHECKED - SHL	05/13	REVISED -

STATE OF ILLINOIS
DEPARTMENT OF TRANSPORTATION

ABUTMENT REMOVAL AND REPAIRS
STRUCTURE NO. 097-0027

SHEET NO. 16 OF 22 SHEETS

F.A.P. RTE. 877	SECTION 100B-1	COUNTY WHITE	TOTAL SHEETS 54	SHEET NO. 35
ILLINOIS FED. AID PROJECT AID			CONTRACT NO. 78231	