

Notes:  
 See sheet 18 of 22 for Sections A-A, B-B & C-C, bar details, and Bill of Material.  
 For details of Bar Splicers, see sheet 20 of 22.  
 Hatched area to be poured after superstructure falsework has been removed. Quantity of concrete included with Concrete Superstructure.  
 Concrete Sealer shall be applied to all exposed surfaces of new concrete backwalls.

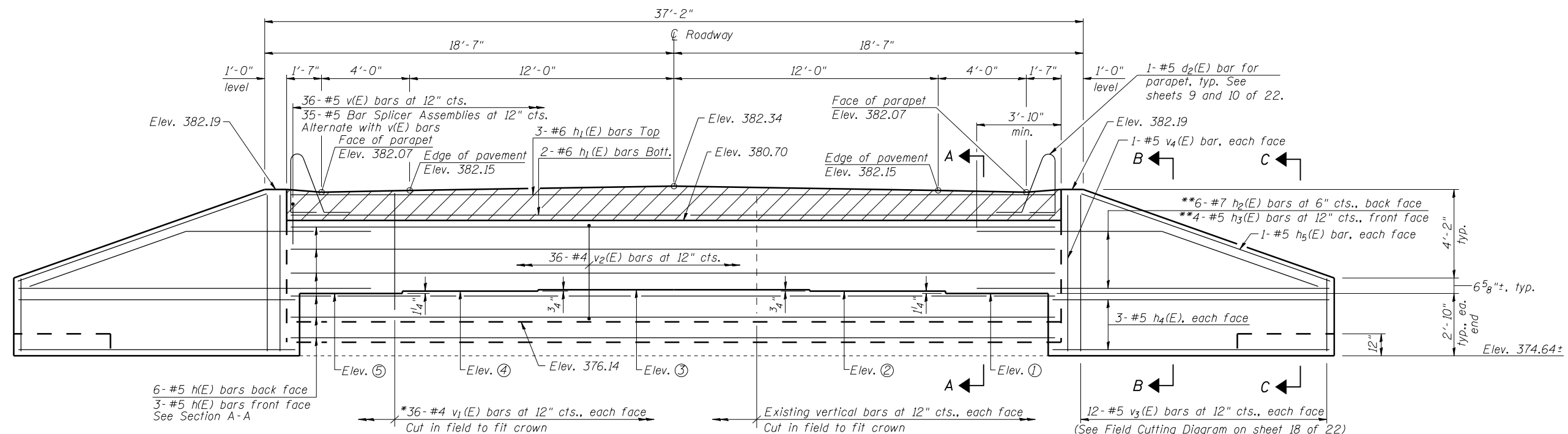
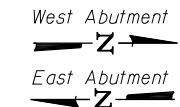
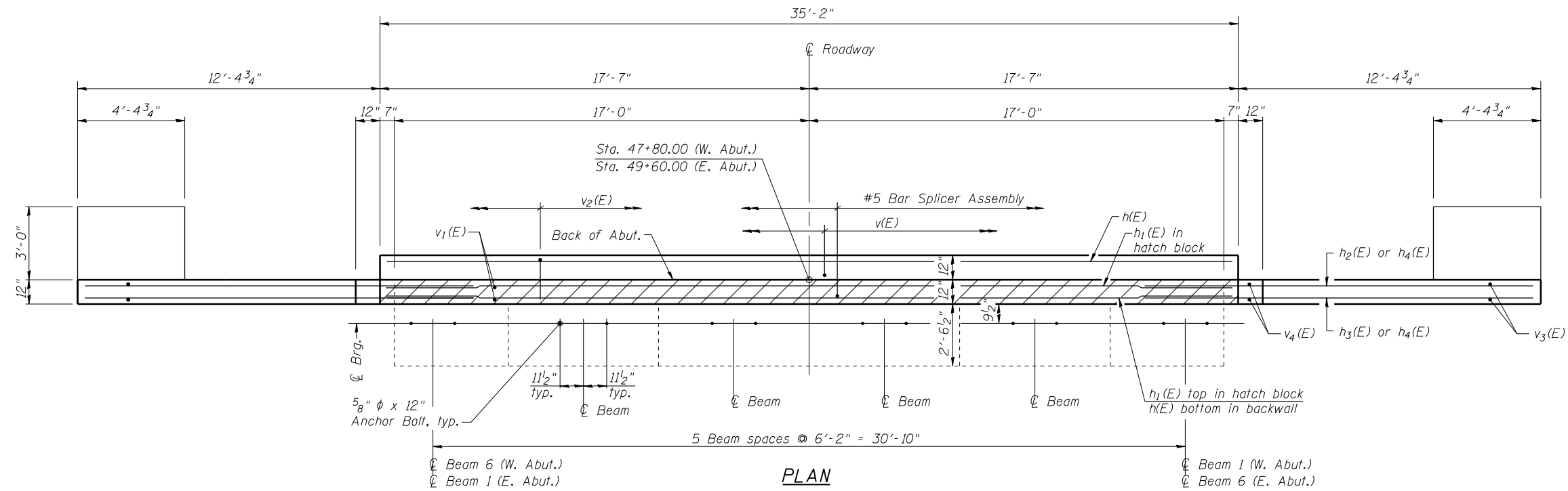


TABLE OF EXISTING BRG. SEAT ELEVATIONS

Location	W. Abut.	E. Abut.
①	377.46	377.49
②	377.56	377.58
③	377.63	377.64
④	377.57	377.59
⑤	377.47	377.49

ELEVATION  
 (Looking East at E. Abut.,  
 Looking West at W. Abut.)

\* Alternate with existing vertical reinforcement and epoxy grout into 3/4" φ x 9" drilled holes as shown in Section A-A. See Section 584 of the Standard Specifications.  
 \*\* Bend and cut to fit.



USER NAME = kah	DESIGNED - RDP 02/13	REVISED -
ESCA PROJECT NO. 988.14	CHECKED - SHL 02/13	REVISED -
	DRAWN - DWH 02/13	REVISED -
PLOT DATE = 7/3/2014 8:39:52 AM	CHECKED - RDP 05/13	REVISED -

STATE OF ILLINOIS  
 DEPARTMENT OF TRANSPORTATION

ABUTMENT DETAILS  
 STRUCTURE NO. 097-0027

SHEET NO. 17 OF 22 SHEETS

F.A.P. RTE.	SECTION	COUNTY	TOTAL SHEETS	SHEET NO.
877	100B-1	WHITE	54	36
CONTRACT NO. 78231				

ILLINOIS FED. AID PROJECT AID