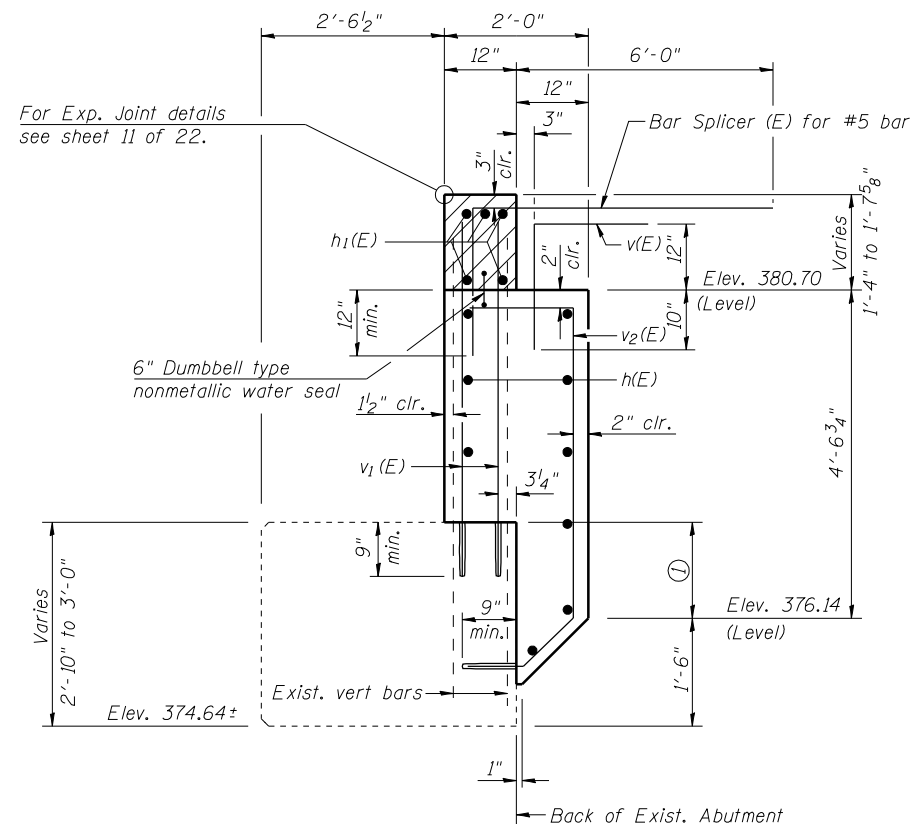


**TWO ABUTMENTS
BILL OF MATERIAL**

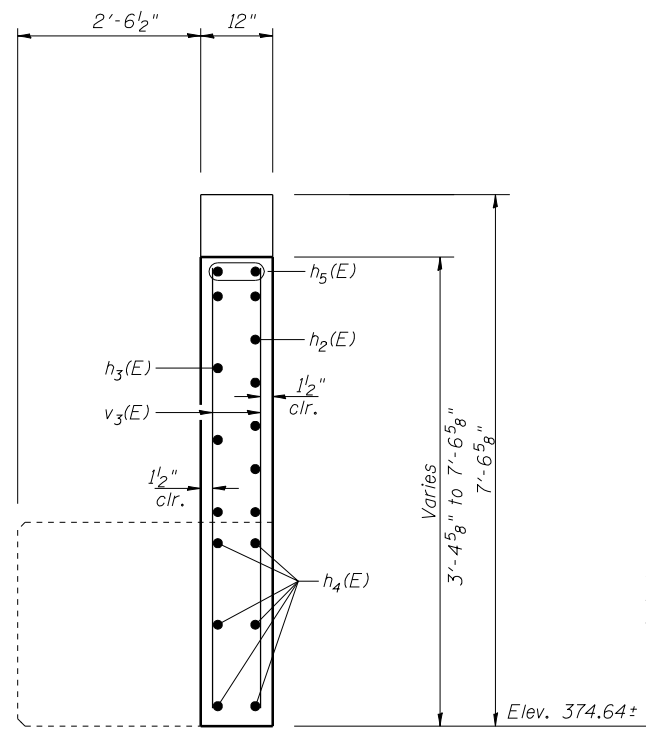
Bar	No.	Size	Length	Shape
d ₂ (E)	4	#5	7'-11"	⌒
h(E)	18	#5	34'-10"	—
h ₁ (E)	10	#6	34'-10"	—
h ₂ (E)	24	#7	16'-1"	—
h ₃ (E)	16	#5	16'-1"	—
h ₄ (E)	24	#5	12'-7"	—
h ₅ (E)	8	#5	12'-0"	—
n(E)	20	#4	3'-6"	J
t ₁ (E)	40	#5	3'-8"	—
v(E)	72	#5	3'-9"	⌒
v ₁ (E)	144	#4	5'-2"	—
v ₂ (E)	72	#4	7'-9"	J
v ₃ (E)	48	#5	10'-0"	—
v ₄ (E)	8	#5	7'-2"	—
w ₁ (E)	40	#4	4'-0"	—
Structure Excavation			Cu. Yd.	120
Concrete Structures			Cu. Yd.	33.9
Reinforcement Bars, Epoxy Coated			Pound	4700
Concrete Sealer			Sq. Ft.	330

Notes:
Concrete Sealer shall be applied to all exposed surfaces of new concrete backwalls.
For details of Bar Splicers, see sheet 20 of 22.
Hatched area to be poured after superstructure falsework has been removed. Quantity of concrete included with Concrete Superstructure.

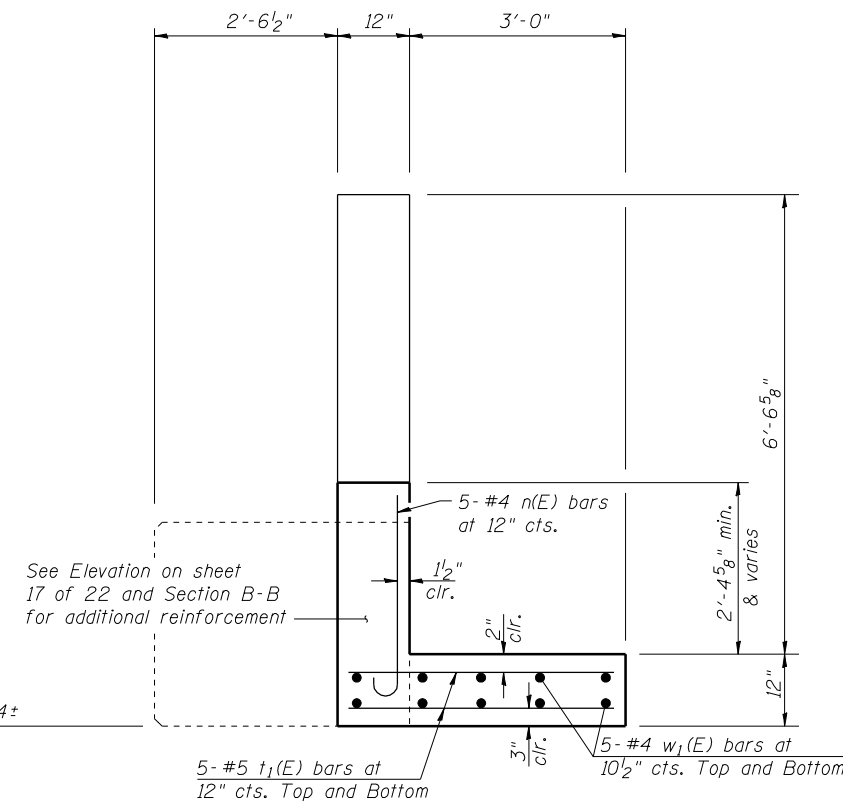


SECTION A-A

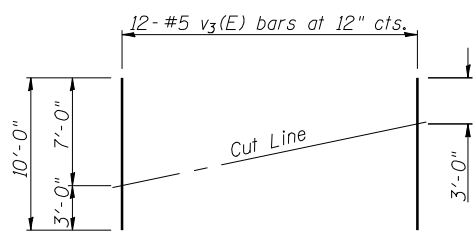
① Varies 1'-4" to 1'-6" - W. Abut.
Varies 1'-4" to 1'-5 3/4" - E. Abut.



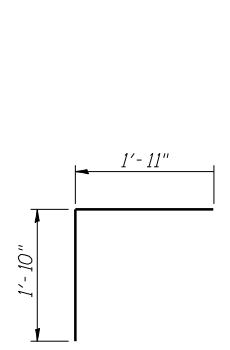
SECTION B-B



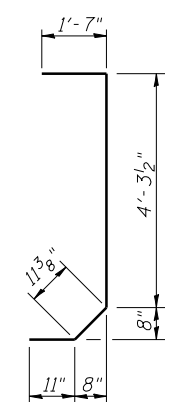
SECTION C-C



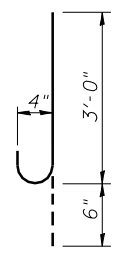
BAR v₃(E)
FIELD CUTTING DIAGRAM
Order v₃(E) bars full length. Cut as shown and use remainder of bars in opposite face.



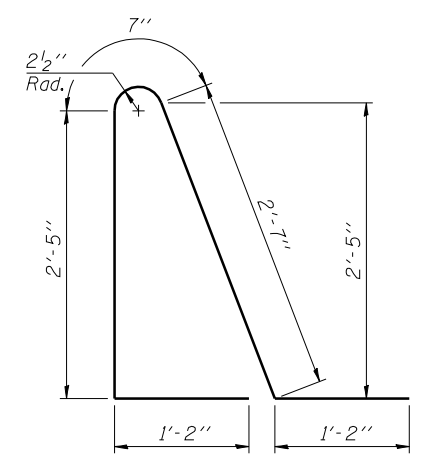
BAR v(E)



BAR v₂(E)



BAR n(E)



BAR d₂(E)



USER NAME = kah	DESIGNED - RDP	02/13	REVISED -
ESCA PROJECT NO. 988.14	CHECKED - SHL	02/13	REVISED -
	DRAWN - DWH	02/13	REVISED -
PLOT DATE = 7/3/2014 8:39:59 AM	CHECKED - RDP	05/13	REVISED -

**STATE OF ILLINOIS
DEPARTMENT OF TRANSPORTATION**

**ABUTMENT DETAILS
STRUCTURE NO. 097-0027**

SHEET NO. 18 OF 22 SHEETS

F.A.P. RTE.	SECTION	COUNTY	TOTAL SHEETS	SHEET NO.
877	100B-1	WHITE	54	37
			CONTRACT NO. 78231	
ILLINOIS FED. AID PROJECT AID				