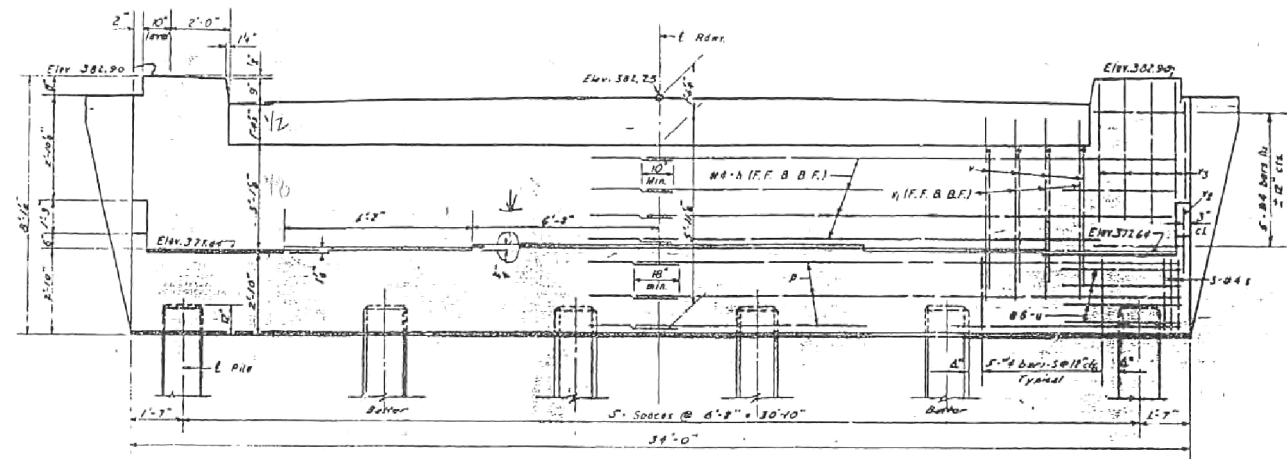


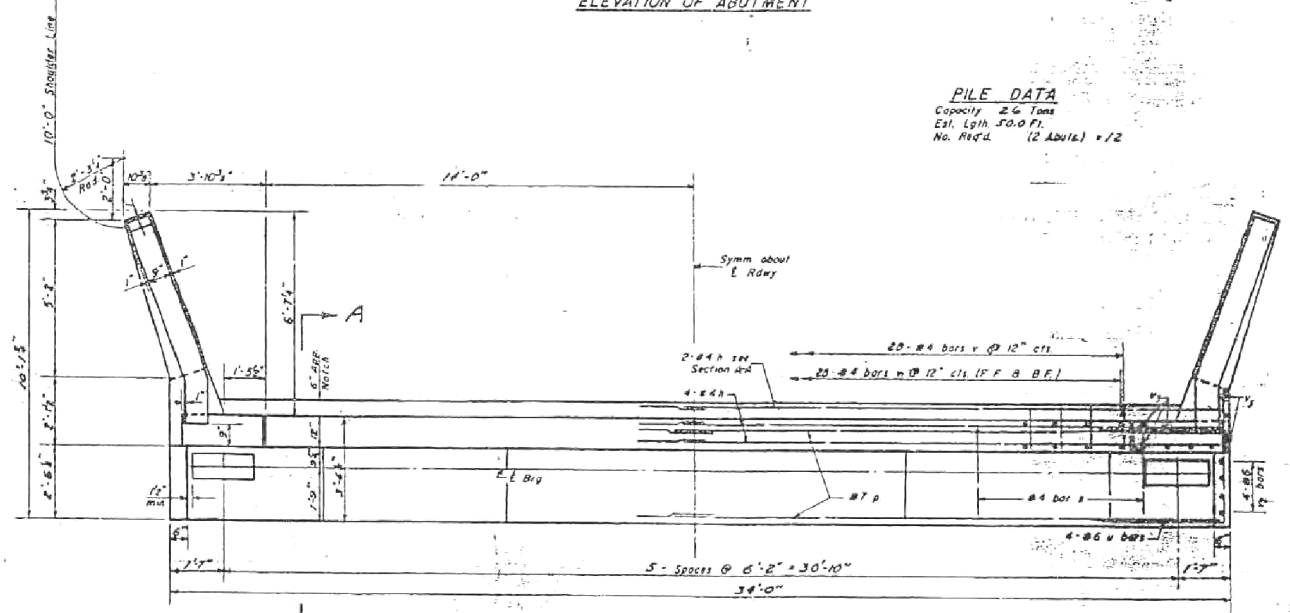
STATE OF ILLINOIS
DEPARTMENT OF PUBLIC WORKS & BUILDINGS
DIVISION OF HIGHWAYS

ROUTE NO.	SECTION	COUNTY	TOTAL SHEETS	SHEET NO.	SHEET
F.A. 113	100B	White - Gallatin	11	11	8 SHEETS
ILLINOIS	SEE SEE PROJECT	F-221(5)			



ELEVATION OF ABUTMENT

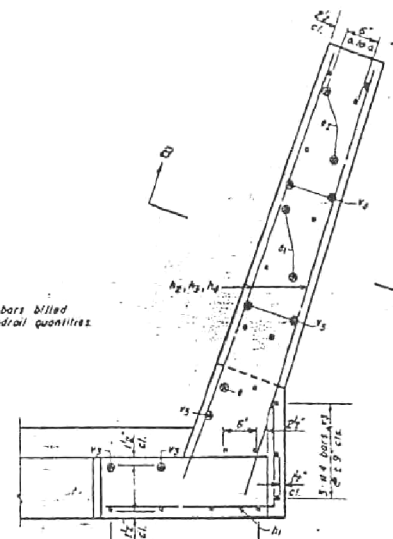
PILE DATA
Capacity 26 Tons
Est. Lgth. 50.0 FT.
No. Req'd. (2 Abut.) = 12



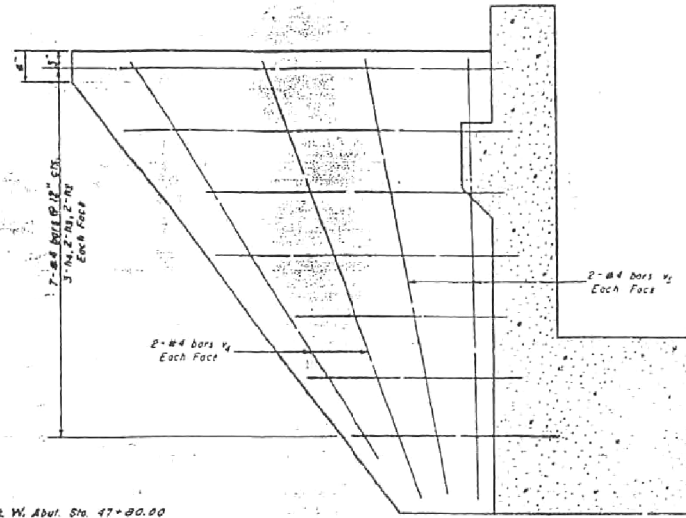
PLAN OF ABUTMENT

PILE DATA
Capacity 26 Tons
Est. Lgth. 50 FT.
No. Required 12 (2 Abut.)

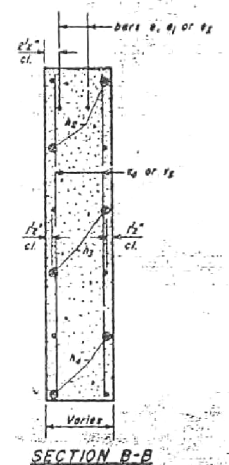
See sheet #5 for pile details.



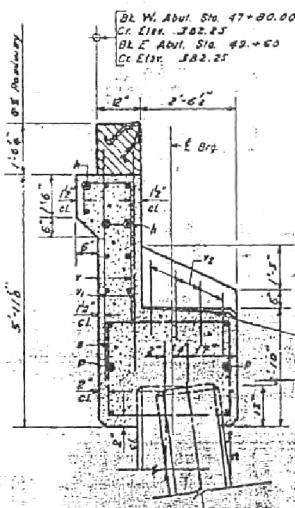
PLAN OF BRACKET



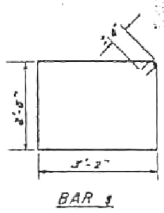
ELEVATION OF BRACKET



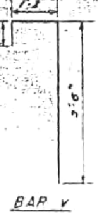
SECTION B-B



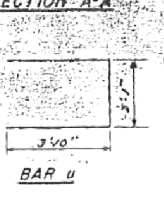
SECTION A-A



BAR 1



BAR Y



BAR U

BILL OF MATERIAL - 2 ABUTMENTS

Bar	No.	Size	Lgth.	SALES
A	40	#4	17'-6"	
B	20	#4	4'-6"	
A ₁	16	#4	6'-6"	
A ₂	16	#4	5'-0"	
A ₃	24	#4	3'-8"	
B	28	#7	17'-6"	
B ₁	62	#4	12'-0"	
B ₂	46	#6	10'-8"	
B ₃	56	#4	6'-0"	
B ₄	112	#4	5'-8"	
B ₅	16	#6	3'-8"	
B ₆	36	#4	6'-0"	
B ₇	16	#4	8'-0"	
B ₈	16	#4	7'-0"	
Class X Concrete				
			Cu Yd	45.0
Reinforcement Bars				
			Lb.	3300
18" Precast Cant Piers				
			Yds	600

ABUTMENTS
F.A. RTE 113 SECT. 100B
WHITE COUNTY
STA. 48+70

DESIGNED: *M. J. WATKINS*
CHECKED: *H. M. CHEN*
DRAWN: *M. J. C.*
APPROVED: *M. J. WATKINS*
DATE: *APRIL 13, 1955*

FILE NAME = D978231-sht-existingstructure.dgn
MODEL = Default
PLOT DRIVER = IODT_PDF.plt



USER NAME = twalker	DESIGNED - MCV	REVISED -
FILE NAME = D978231-sht-existingstructure.dgn	DRAWN - CMM	REVISED -
PLOT SCALE = 48.0000 / 1 in.	CHECKED - MTM	REVISED -
PLOT DATE = 7/8/2014	DATE -	REVISED -

STATE OF ILLINOIS
DEPARTMENT OF TRANSPORTATION

EXISTING STRUCTURE PLANS
FOR INFORMATION ONLY

SCALE: NONE SHEET NO. 7 OF 8 SHEETS STA. TO STA.

F.A.P. RTE.	SECTION	COUNTY	TOTAL SHEETS	SHEET NO.
877	100B-1	WHITE	54	46
CONTRACT NO. 78231				
ILLINOIS FED. AID PROJECT				