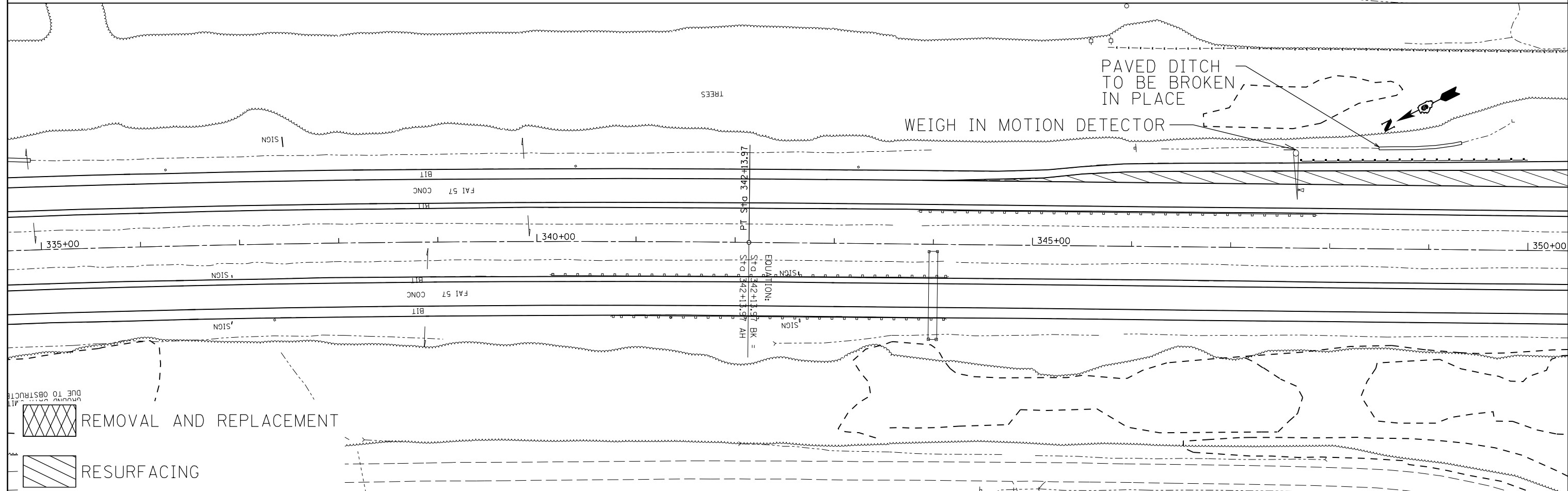
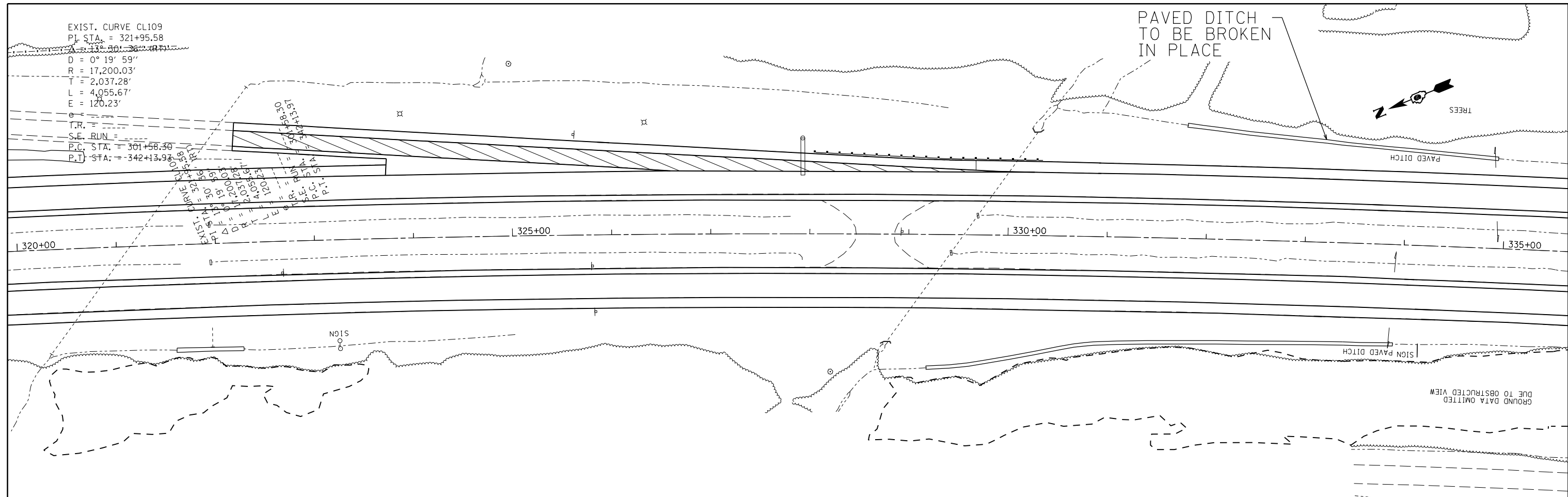


EXIST. CURVE CL109
 P.I. STA. = 321+95.58
 D = 0° 19' 59"
 R = 17,200.03'
 T = 2,037.28'
 L = 4,055.67'
 E = 120.23'
 S.E. RUN =
 P.C. STA. = 301+58.30
 P.T. STA. = 342+13.96

EXIST. CURVE CL109
 P.I. STA. = 321+95.58
 D = 0° 19' 59"
 R = 17,200.03'
 T = 2,037.28'
 L = 4,055.67'
 E = 120.23'
 S.E. RUN =
 P.C. STA. = 301+58.30
 P.T. STA. = 342+13.96

PAVED DITCH
 TO BE BROKEN
 IN PLACE



REMOVAL AND REPLACEMENT
 RESURFACING

FILE NAME =	USER NAME = colemm	DESIGNED -	REVISED -	STATE OF ILLINOIS DEPARTMENT OF TRANSPORTATION	PLAN ALONG I-57 MEDIAN			F.A.I. RE. 57	SECTION	COUNTY WILLIAMSON	TOTAL SHEETS 107	SHEET NO. 80
ei:\pw\work\p\dtd\colemm\d0351283\78380	sh1e1.dgn	DRAWN -	REVISED -		SCALE:	SHEET	OF	SHEETS	STA.	TO	STA.	ILLINOIS FED. AID PROJECT
Default	PLOT SCALE = 100.0000' / in.	CHECKED -	REVISED -									CONTRACT NO. 78380
	PLOT DATE = 8/22/2014	DATE -	REVISED -									(X1-8,X1-7-1,X1-7,X1-6-1)R-1