

11-21-14 LETTING ITEM 127

STATE OF ILLINOIS
DEPARTMENT OF TRANSPORTATION
DIVISION OF HIGHWAYS

F.A.D. R.F.E.	SECTION	COUNTY	TOTAL SHEETS
9197	13-00040-01-RS	ST. CLAIR	12
FEDERAL AID PROJECT		ILLINOIS	CONTRACT NO. 97573

INDEX OF SHEETS

- 1 COVER SHEET
- 2 GENERAL NOTES, REFERENCE TIES, AND UTILITIES
- 3 SUMMARY OF QUANTITIES
- 4 TYPICAL ROADWAY SECTIONS
- 5 SCHEDULES OF QUANTITIES
- 6-12 ROADWAY PLAN AND PROFILE

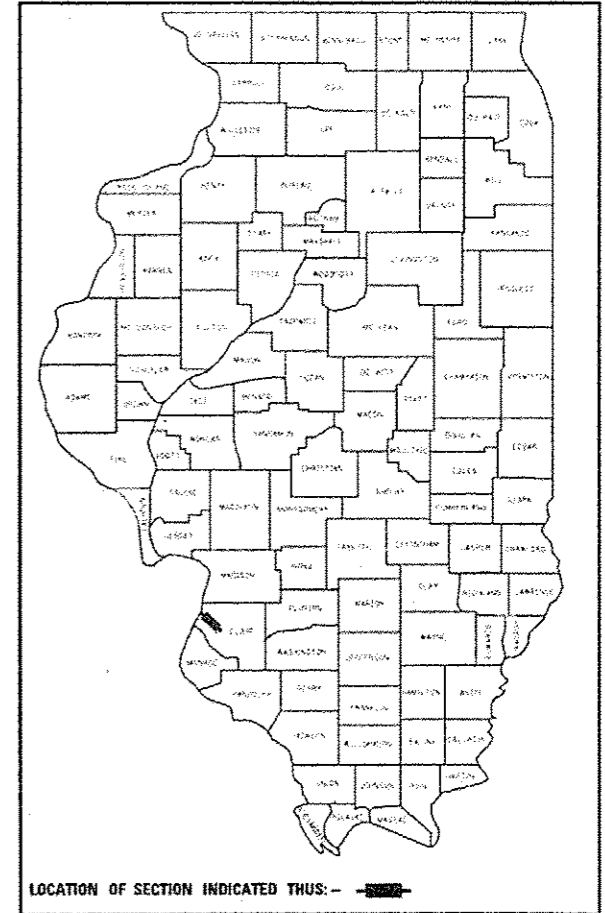
PROPOSED HIGHWAY PLANS

JEROME LANE RESURFACING
SECTION 13-00040-01-RS
FAU 9197
ST. CLAIR COUNTY
VILLAGE OF CAHOKIA

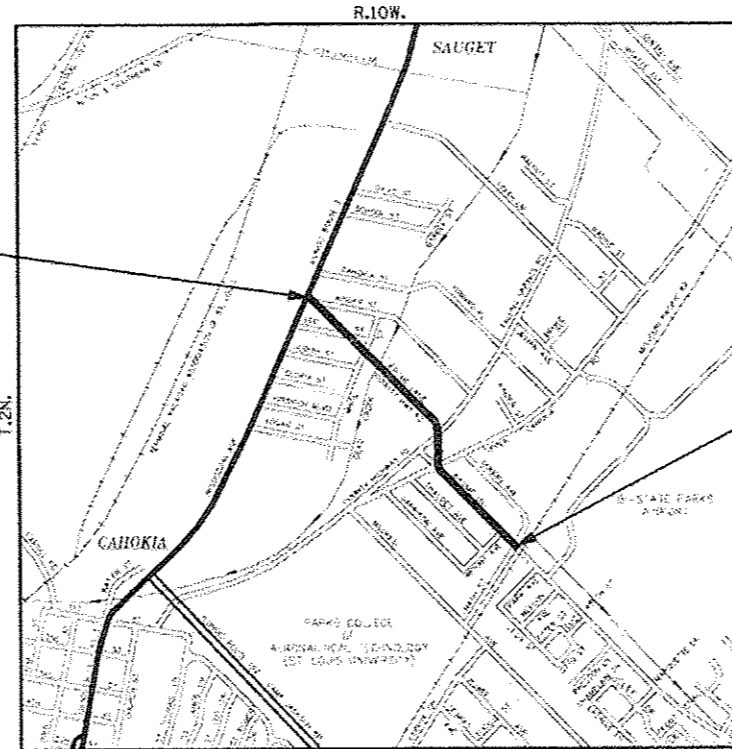
PROJECT NO. HD-5011(401)
STP-S FUNDING
JOB NO. C-98-320-13

HIGHWAY STANDARDS

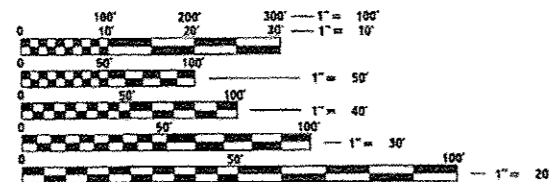
- 000001-06
- 424006-01
- 424011-01
- 424016-01
- 442201-03
- 606001-05
- 606301-04
- 701501-06
- 701502-06
- 701801-05
- 701901-03
- 780001-04
- 886001-01
- 886006-01



BEGIN PROJECT
STA. 200 + 35.00



END PROJECT
STA. 238 + 15.00



FULL SIZE PLANS HAVE BEEN PREPARED USING STANDARD ENGINEERING SCALES. REDUCED SIZED PLANS WILL NOT CONFORM TO STANDARD SCALES. IN MAKING MEASUREMENTS ON REDUCED PLANS, THE ABOVE SCALES MAY BE USED.

J.U.L.I.E.
JOINT UTILITY LOCATION INFORMATION FOR EXCAVATION
1-800-892-0123
OR 811

DESIGN DESIGNATION: MAJOR COLLECTOR
2014 ADT = 3650
TRUCK TRAFFIC = 5% ASSUMED
DESIGN SPEED = 35 MPH



NO. 5 BANK SQUARE
EAST ST. LOUIS, ILLINOIS 62203
(618) 398-0490 FAX (618) 398-1339
HR JOB# 192-0494

APPROXIMATE SCALE

LOCATION MAP
SCALE 1"=1000'±
GROSS LENGTH = 3780 FT. = 0.716 MILE
NET LENGTH = 3780 FT. = 0.716 MILE

CENTERVILLE TWP
SECTION 35



MARK A. REITZ
P.E. #062-047531 DATE 9-10-14
LICENSE EXPIRES: NOVEMBER 30, 2015
HURST-ROSCHÉ ENGINEERS, INC.

STATE OF ILLINOIS DEPARTMENT OF TRANSPORTATION	
APPROVED	9-9-2014 DATE
GARY CORNWELL, MAYOR, VILLAGE OF CAHOKIA	
Passed	9-15-14 DATE
DISTRICT 8 ENGINEER OF LOCAL ROADS AND STREETS	
RELEASING FOR BID BASED ON LIMITED REVIEW	9-15-14 DATE
DEPUTY DIRECTOR OF HIGHWAYS, REGION FIVE ENGINEER	

PRINTED BY AUTHORITY OF THE STATE OF ILLINOIS

GENERAL NOTES

1. THIS SECTION SHALL BE CONSTRUCTED IN ACCORDANCE WITH THE PLANS, THE "STANDARD SPECIFICATIONS FOR ROAD AND BRIDGE CONSTRUCTION" ADOPTED JANUARY 1, 2012 AND THE SPECIAL PROVISIONS.
2. CONTRACTOR TO SAW-CUT ALL EXISTING PAVEMENT/SIDEWALK/CURB A DEPTH OF 3" IN ALL AREAS WHERE IT ABUTS PROPOSED PAVEMENT/SIDEWALK/CURB. SAW CUTS SHALL BE INCLUDED IN THE UNIT PRICE FOR THE APPROPRIATE PAY ITEM.
3. ALL STATIONING REFERS TO THE CENTERLINE OF NEW CONSTRUCTION.
4. THE LOCATIONS AND / OR DEPTHS OF UNDERGROUND UTILITIES SHOWN HAVE BEEN TAKEN FROM AVAILABLE RECORD INFORMATION FURNISHED BY THE UTILITY OWNERS AND MUST BE CONSIDERED APPROXIMATE. FIELD MARKING OF FACILITIES IN CRITICAL AREAS MAY BE OBTAINED BY PROVIDING A MINIMUM OF 48 HOURS ADVANCE NOTICE TO J.U.L.I.E. @ (800) 892 - 0123.
5. THE FOLLOWING CONSTANTS WERE USED IN THE CALCULATIONS OF QUANTITIES FOR THIS PROJECT:
 - HMA - 112 LBS. / SQ. YD. / INCH THICKNESS
 - BITUMINOUS MATERIALS (PRIME COAT) - 0.05 LB / SQ. FT.
 - AGGREGATE SURFACE & BASE - 2.05 TONS./CU. YD.
6. DISPOSAL OF ALL MATERIAL FROM DEMOLITION (PAVEMENT REMOVAL, ETC.) SHALL BE INCLUDED IN THE CONTRACT AND PERFORMED IN ACCORDANCE WITH ALL STATE AND LOCAL CODES.
7. THE EXISTING RIGHT OF WAY LINES AND WIDTHS SHOWN ON THE PLAN SHEETS WERE TAKEN FROM EXISTING ST. CLAIR COUNTY TAX MAPS AND ATLASES. THE LOCATIONS SHOWN ARE FOR INFORMATIONAL PURPOSES ONLY.
8. THE FINISHED EARTHWORK SHALL HAVE A VEGETATION SUSTAINING SOIL COVERING THE TOP 0.3 FT IN AREAS TO BE SEEDED. SEEDING, CLASS I, SHALL CONFORM TO ARTICLE 250 AND SHALL BE CONSIDERED INCIDENTAL TO PCC SIDEWALK, 4 INCH.
9. THE CONTRACTOR SHALL SUBMIT HOT-MIX ASPHALT MIX DESIGNS FOR APPROVAL IN ACCORDANCE WITH ARTICLE 1030.04. SUBMITTED MIXES AND SOURCES MUST BE IDOT APPROVED AND SHALL MATCH THE COMPOSITION SPECIFIED ON THE TYPICAL SECTIONS.
10. EXISTING CONFLICTING PAVEMENT MARKINGS SHALL BE OBLITERATED AS DIRECTED BY THE ENGINEER AND SHALL BE INCLUDED IN THE COST OF THERMOPLASTIC PAVEMENT MARKING - LINE 24".

CONTROL POINTS

POINT	COORDINATES		ELEVATION	DESCRIPTION, LOCATION
CP 1	N 694147.92	E 2294716.83	415.15	MAG SET, STA 238+03.32; 0.31' LT
CP 2	N 694291.03	E 2294580.16	413.45	MAG SET, STA 236+05.43; 0.35' LT
CP 3	N 695514.30	E 2293761.98	410.79	#5 REBAR, STA 220+80.50; 47.10' RT

SEE PLAN AND PROFILE SHEETS FOR LOCATIONS

COMMITMENTS: NONE

UTILITY OWNERS

ATT/DISTRIBUTION
PHONE: (630) 573-5450

COMMONFIELDS OF CAHOKIA
PUBLIC WATER DISTRICT
PHONE: (618) 337-3302

VILLAGE OF CAHOKIA
PHONE: (618) 332-1222

IL-AMERICAN WATER
PHONE: (618) 293-3245

AMEREN IP
PHONE: (618) 236-6281

CHARTER COMMUNICATIONS
PHONE: (636) 387-6650

CENTERPOINT ENERGY
MISSISSIPPI RIVER TRANSMISSION
PHONE: (501) 377-4614

BUCKEYE PARTNERS
PHONE: (610) 904-4409

LACLEDE PIPELINE COMPANY
PHONE: (314) 658-5594

EXXONMOBIL PIPELINE COMPANY
PHONE: (630) 243-2386

CITY OF COLUMBIA
PHONE: (618) 281-7144 EXT107

WINDSTREAM KDL, INC
PHONE: (800) 289-1901

HOT-MIX ASPHALT MIXTURE TABLES

MIXTURE USE:	SURFACE COURSE
PG:	PG 64-22
RAP (MAX) %:	10%
RAS (MAX) %:	10%
DESIGN AIR Voids:	4% @ N DESIGN = 70
MIXTURE COMPOSITION: (GRADATION MIXTURE)	IL-9.5 OR IL-12.5
FRICTION AGGREGATE:	MIXTURE C
MIXTURE WEIGHT:	112 LB/SQ YD/IN

DETECTOR LOOP PROPERTIES MATRIX

LOOP	PHASE (0)	LOOP SIZE(FT)	REQUIRED # OF TURNS	CALCULATED INDUCTANCE MICROHENRIES	CALCULATED RESISTANCE OHMS
1. WB RT	8	6x50	3-6-3	810	2.14
2. WB LT	8	6x50	3-6-3	810	2.14

THE ABOVE VALUES ARE CALCULATED OF COMBINED LOOP + LEAD-IN INDUCTANCE AND RESISTANCE. MEASURES VALUES SHOULD BE WITHIN +/- 20% OF THESE VALUES.

HURST-RUSCH ENGINEERS, INC.
 EAST ST. LOUIS, ILLINOIS 62203
 PHONE: (616) 398-6890
 HR JOB# 152-0191

HR
 HURST-RUSCH ENGINEERS, INC.

DESIGNED	MAR	REVISED
DRAWN	TWC	REVISED
CHECKED	JJC	REVISED
DATE	7/23/14	REVISED

**STATE OF ILLINOIS
DEPARTMENT OF TRANSPORTATION**

GENERAL NOTES, REFERENCE TIES, AND UTILITIES

SCALE: NONE SHEET NO. 1 OF 1 SHEETS STA. TO STA.

P.A.U. RTE.	SECTION	COUNTY	TOTAL SHEET NO.
9197	13-00040-01-RS	ST. CLAIR	12 2
CONTRACT NO. 97573			
ILLINOIS FED. AID PROJECT			

SUMMARY OF QUANTITIES

SUMMARY OF QUANTITIES

CODE NO.	ITEM	UNIT	TOTAL
40600275	BITUMINOUS MATERIALS (PRIME COAT)	POUND	7208
40600990	TEMPORARY RAMP	SQ YD	87
40603315	HOT-MIX ASPHALT SURFACE COURSE, MIX "C", N70	TON	1346
42400100	PORTLAND CEMENT CONCRETE SIDEWALK 4 INCH	SQ FT	1247
42400800	DETECTABLE WARNINGS	SQ FT	135
44000155	HOT-MIX ASPHALT SURFACE REMOVAL, 1 1/2"	SQ YD	16018
44000500	COMBINATION CURB AND GUTTER REMOVAL	FOOT	231
44000600	SIDEWALK REMOVAL	SQ FT	1256
44003100	MEDIAN REMOVAL	SQ FT	150
44201789	CLASS D PATCHES, TYPE II, 12 INCH	SQ YD	33
44201794	CLASS D PATCHES, TYPE III, 12 INCH	SQ YD	56
44201796	CLASS D PATCHES, TYPE IV, 12 INCH	SQ YD	718
60605000	COMBINATION CONCRETE CURB AND GUTTER, TYPE B-6,24	FOOT	231
60618300	CONCRETE MEDIAN SURFACE, 4 INCH	SQ FT	150
67100100	MOBILIZATION	L SUM	1
70300100	SHORT TERM PAVEMENT MARKING	FOOT	7560
70301000	WORK ZONE PAVEMENT MARKING REMOVAL	SQ FT	1247
72000100	SIGN PANEL - TYPE 1	SQ FT	24
72900100	METAL POST - TYPE A	FOOT	46
78000100	* THERMOPLASTIC PAVEMENT MARKING - LETTERS AND SYMBOLS	SQ FT	271
78000200	* THERMOPLASTIC PAVEMENT MARKING - LINE 4"	FOOT	8559
78000600	* THERMOPLASTIC PAVEMENT MARKING - LINE 12"	FOOT	1059
78000650	* THERMOPLASTIC PAVEMENT MARKING - LINE 24"	FOOT	261
78100100	* RAISED REFLECTIVE PAVEMENT MARKER	EACH	2
78200300	* PRISMATIC CURB REFLECTOR	EACH	11
78300200	* RAISED REFLECTIVE PAVEMENT MARKER REMOVAL	EACH	2
88600600	* DETECTOR LOOP REPLACEMENT	FOOT	360
X7010216	TRAFFIC CONTROL AND PROTECTION, (SPECIAL)	L SUM	1
Z0036200	PAINT CURB	FOOT	105

* SPECIALITY ITEM

HURST-ROSCHKE ENGINEERS, INC.
EAST ST. LOUIS, ILLINOIS 62203
PHONE: (616) 398-0890
HR JOB# 192-0494

HR
HURST-ROSCHKE
ENGINEERS, INC.

FILE NAME : x:\projects\current\192-2494_cohokis_jpr	USER NAME : HURST-ROSCHKE jpr	DESIGNED : MAR DRAWN : TWC	REVISED : REVISED : REVISED : REVISED :
PLT SCALE : 10,0000' / IN.	PLT DATE : 9/11/2014	CHECKED : JJC DATE : 7-23-14	

STATE OF ILLINOIS
DEPARTMENT OF TRANSPORTATION

SUMMARY OF QUANTITIES

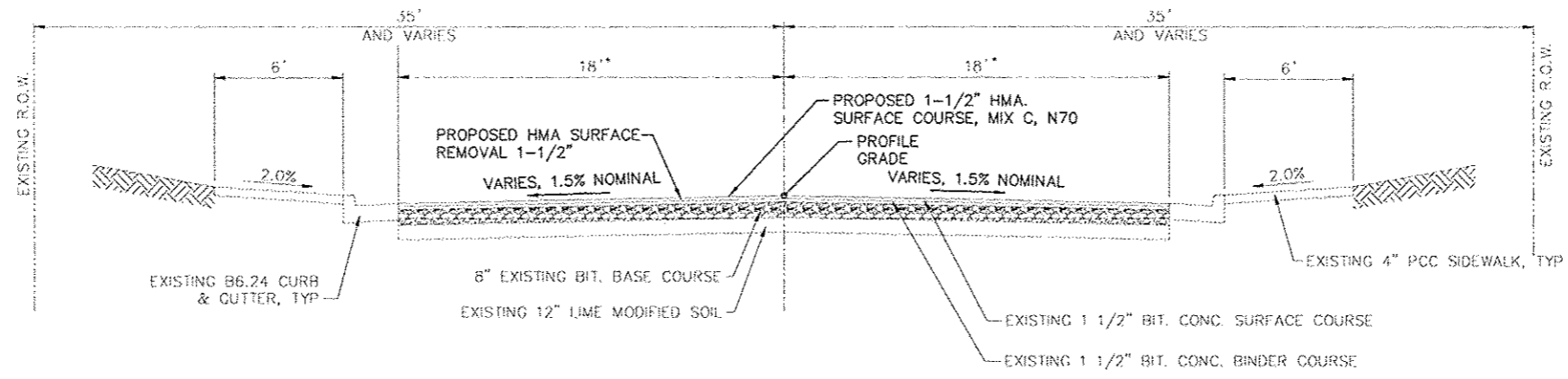
SCALE: NONE SHEET NO. 1 OF 1 SHEETS STA. TO STA.

F.A.U. RTE. 9197	SECTION 13-00040-01-R5	COUNTY ST CLAIR	TOTAL SHEETS 12	SHEET NO. 3
CONTRACT NO. 97573				
ILLINOIS FED. AID PROJECT				

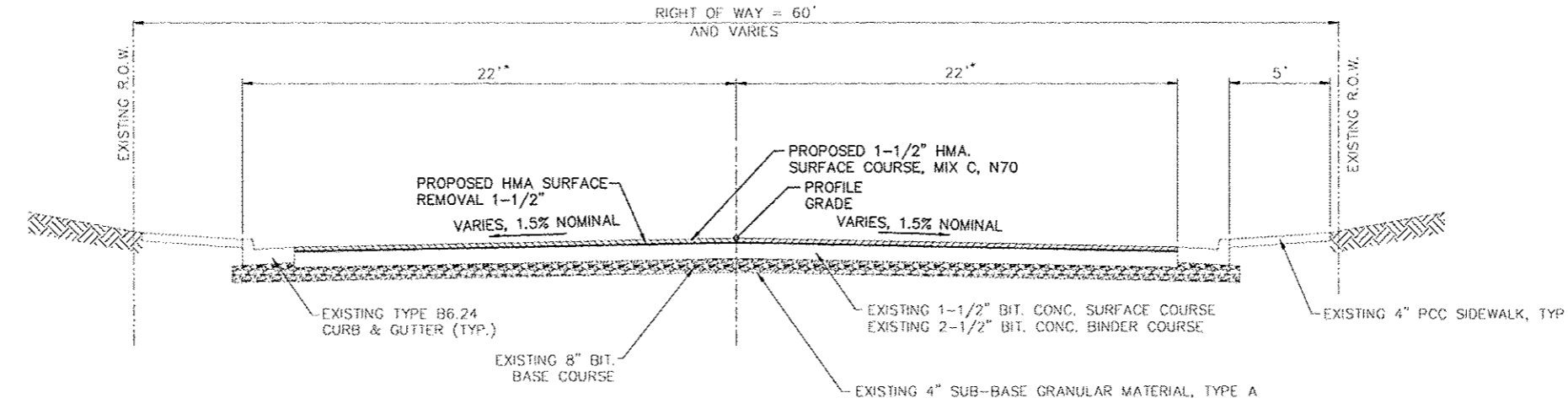
PLAN	REVISION	DATE
NO.	BY	
NO.	BY	
NO.	BY	
NO.	BY	
NO.	BY	
NO.	BY	
NO.	BY	
NO.	BY	
NO.	BY	
NO.	BY	

PROFILE	REVISION	DATE
NO.	BY	
NO.	BY	
NO.	BY	
NO.	BY	
NO.	BY	
NO.	BY	
NO.	BY	
NO.	BY	
NO.	BY	
NO.	BY	

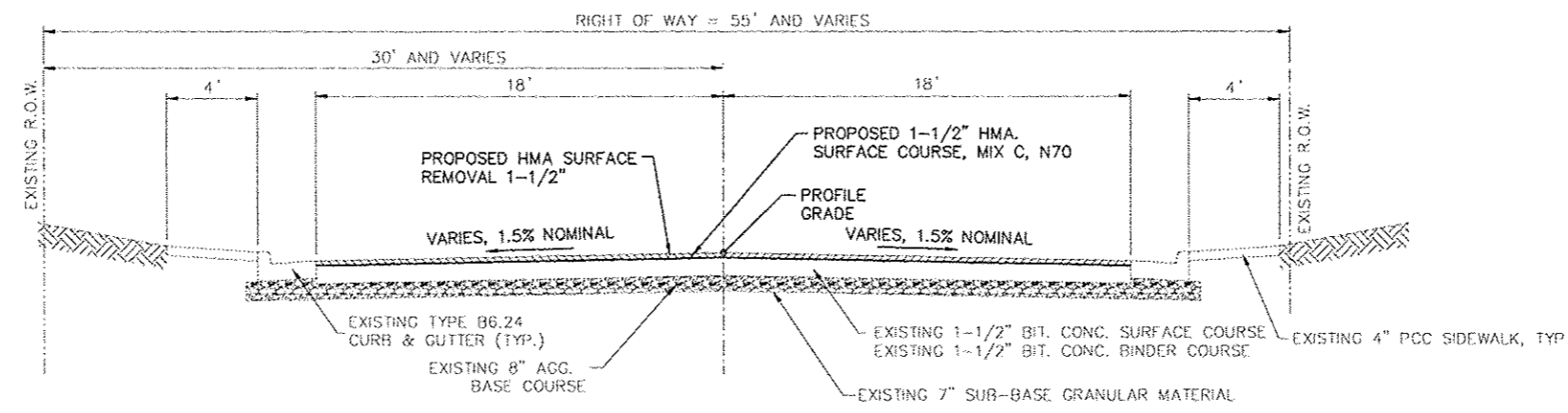
HURST-ROSCHKE ENGINEERS, INC.
 HILLSBORO, ILLINOIS 62049
 (217)532-3939 FAX (217)532-3212
 HR# 192-0494



STA. 200+35.00 TO STA. 221+50



STA. 221+50 TO STA. 225+50



STA. 225+50 TO STA. 238+15

FILE NAME	USER NAME	DESIGNED	REVISED
\\nprmnts\current\192-2494\cshkls\jarc... \192-2494\cshkls\jarc...	rsrjst-roschke	MAR	-
		DRAWN	REVISED
		TWC	-
		CHECKED	REVISED
		JJC	-
		DATE	REVISED
		7-23-14	-

**STATE OF ILLINOIS
 DEPARTMENT OF TRANSPORTATION**

TYPICAL ROADWAY SECTIONS

SCALE: N/A SHEET NO. 1 OF 1 SHEETS STA. 200+35 TO STA. 238+15

F.A.U. RTE.	SECTION	COUNTY	TOTAL SHEETS	SHEET NO.
9197	13-00040-01-RS	ST. CLAIR	12	4
CONTRACT NO. 97573				
ILLINOIS FED. AID PROJECT				

BITUMINOUS MATERIALS (PRIME COAT)			
Jerome Lane	0.05 LB/SQ FT	POUND	
200+37.79 to 202+45.00		564	
202+45.00 to 220+00.00		3159	
220+00.00 to 225+45.00		1199	
225+45.00 to 238+15.00		2286	
Total		7208	

DETECTOR LOOP REPLACEMENT			
JEROME LANE			FOOT
200+37.00 to 200+87.00			162
200+40.00 to 200+90.00			162
LEAD-IN			36
TOTAL			360

TEMPORARY RAMP			
JEROME LANE			SQ YD
200+35.00 to 200+40.00			67
238+10.00 to 238+15.00			20
Total			87

HOT-MIX ASPHALT SURFACE COURSE, MIX "C", N70					
Jerome Lane	Width (ft)	Depth (in)			TON
<i>Mainline</i>					
200+37.79 to 202+45.00	varies	1.5			105
202+45.00 to 220+00.00	36.0	1.5			590
220+00.00 to 225+45.00	44.0	1.5			224
225+45.00 to 238+15.00	36.0	1.5			427
Total					1346

HOT-MIX ASPHALT SURFACE REMOVAL, 1 1/2"					
Jerome Lane	Width (ft)		SQ FT		SQ YD
<i>Mainline</i>					
200+37.79 to 202+45.00	varies		11282		1254
202+45.00 to 220+00.00	36.0		63180		7020
220+00.00 to 225+45.00	44.0		23980		2664
225+45.00 to 238+15.00	36.0		45720		5080
Total					16018

SIGN PANEL - TYPE 1			
JEROME LANE			SQ FT
203+00.00 RT			6
211+00.00 LT			6
211+00.00 RT			6
219+50.00 LT			6
TOTAL			24

METAL POST - TYPE A			
JEROME LANE			FOOT
203+00.00 RT			12
211+00.00 LT			12
211+00.00 RT			12
219+50.00 LT			12
TOTAL			48

THERMOPLASTIC PAVEMENT MARKING - LETTERS AND SYMBOLS		
LOCATION		SQ FT
<i>RR CROSSING</i>		
236+90.00 to 237+40.00		54
<i>TURN ARROWS</i>		
203+25.00		18
205+80.00		18
208+35.00		18
210+90.00		18
213+45.00		18
216+00.00		18
218+55.00		18
220+70.00		9
221+35.00		9
222+85.00		9
223+47.00		9
<i>THRU AND RIGHT TURN</i>		
220+70.00		15
221+35.00		15
222+85.00		15
223+47.00		15
TOTAL		271

THERMOPLASTIC PAVEMENT MARKING - LINE 4"			
LOCATION			FOOT
<i>SOLID YELLOW</i>			
219+10.00 to 221+65.00	LT/RT		1020
222+60.00 to 224+83.00	LT/RT		892
225+42.00 to 227+47.00	LT/RT		820
<i>SKIP-DASH YELLOW</i>			
227+47.00 to 235+75.00	CL		207
<i>DOUBLE YELLOW</i>			
200+53.00 to 203+47.00	RT		588
202+12.00 to 203+47.00	RT/LT		270
236+38.00 to 238+15.00	CL		354
<i>SOLID WHITE</i>			
200+53.00 to 202+12.00	LT		159
220+45.00 to 221+68.00	RT		123
222+48.00 to 223+72.00	LT		124
<i>SKIP-DASH WHITE</i>			
202+12.00 to 203+47.00	LT		34
219+10.00 to 220+45.00	RT		34
223+72.00 to 224+79.00	RT		27
<i>TWO WAY LEFT TURN LANE</i>			
203+47.00			3908
TOTAL			8559

PRISMATIC CURB REFLECTOR			
JEROME LANE			EACH
200+37.00 to 200+70.00			11
TOTAL			11

PAINT CURB			
JEROME LANE	WHITE		FOOT
200+37.00 to 200+70.00			105
TOTAL			105

THERMOPLASTIC PAVEMENT MARKING - LINE 12"			
LOCATION			FOOT
<i>DIAGONAL STRIPING</i>			
202+12.00 to 203+47.00	CL		38
219+10.00 to 221+60.00	CL		82
222+60.00 to 224+83.00	CL		128
225+42.00 to 227+47.00	CL		96
<i>CROSSWALK</i>			
At Falling Springs Intersection			572
At Wright Avenue Intersection			143
Total			1059

THERMOPLASTIC PAVEMENT MARKING - LINE 24"			
JEROME LANE			FOOT
200+46.00	RT	STOP BAR	20
200+49.00	LT	STOP BAR	20
200+53.00	LT	STOP BAR	12
221+60.00	CL	STOP BAR	12
221+68.00	RT	STOP BAR	12
221+77.00	LT	STOP BAR	30
222+48.00	RT	STOP BAR	29
222+48.00	LT	STOP BAR	12
222+57.00	LT	STOP BAR	12
222+85.00	RT	STOP BAR	26
224+83.00	RT	STOP BAR	23
225+42.00	LT	STOP BAR	17
235+75.00	RT	STOP BAR	18
236+38.00	LT	STOP BAR	18
TOTAL			261

SHORT TERM PAVEMENT MARKING			
JEROME LANE			FOOT
200+35.00 to 238+15.00			7560
Total			7560

WORK ZONE PAVEMENT MARKING REMOVAL			
JEROME LANE			SQ FT
200+35.00 to 238+15.00			1247
Total			1247

RAISED REFLECTIVE PAVEMENT MARKER REMOVAL			
LOCATION			EACH
200+35.00 to 201+00.00	RT		2
Total			2

RAISED REFLECTIVE PAVEMENT MARKER			
LOCATION			EACH
200+35.00 to 201+00.00	RT		2
Total			2

CLASS D PATCHING SCHEDULE										
PAVEMENT PATCH NO. (X)	STATION	to	STATION	LT/RT	WIDTH FEET	LENGTH FEET	AREA, SQ YD			
							TYPE			
							II	III	IV	
<i>JEROME LANE</i>										
1	201+61	to	202+26	LT	5	65				36.1
2	219+99	to	220+43	LT	12.5	44				61.1
3	221+88	to	222+09	RT	10	17			18.9	
4	222+13	to	222+23	LT	7	10	7.8			
5	226+91	to	227+08	RT	11	17			20.8	
6	227+31	to	227+53	RT	11	22				26.9
7	228+00	to	228+11	RT	8	11	9.8			
8	228+00	to	228+05	LT	18	5	10.0			
9	229+27	to	229+34	LT	7	7	5.4			
10	230+01	to	230+93	RT	15	92				153.3
11	231+23	to	231+37.5	RT	10	14.5			16.1	
12	231+73	to	232+16	RT	11	43				52.6
13	233+65	to	234+10	RT	12	45				60.0
14	237+05	to	237+87	LT/RT	36	82				328.0
TOTAL							33	56	718	

SIDEWALK AND CURB & GUTTER REMOVAL AND/OR REPLACEMENT									
AREA NO. (X)	STATION TO STATION OR LOCATION	LT/RT	PROPOSED			REMOVAL			DETECTABLE WARNINGS
			SIDEWALK	CURB AND GUTTER	CONCRETE MEDIAN	SIDEWALK	CURB AND GUTTER	MEDIAN REMOVAL	
			SQ FT	FOOT	SQ FT	SQ FT	FOOT	SQ FT	
<i>JEROME LANE</i>									
1	219+99 to 220+44	LT	270	45		273	45		
2	NE Quad @ Falling Springs	LT	135	31		135	31		12
3	NW Quad @ Falling Springs	RT	162	30		162	30		12
4	SE Quad @ Falling Springs	LT	130	25		130	25		12
5	Island @ 231+23	RT			150			150	51
6	SW Quad @ Falling Springs	RT	130	26		130	26		12
7	226+02 to 226+28	RT	156			162			
8	SW Quad @ Wright Ave	RT	60	19		60	19		12
9	236+22 to 236+38	LT	104	26		104	26		12
10	SE Quad @ Wright Ave	RT	100	29		100	29		12
TOTALS			1247	231	150	1256	231	150	135

HURST-ROSCHÉ ENGINEERS, INC.
EAST ST. LOUIS, ILLINOIS 62203
PHONE: (616) 398-0890
HR JOB# 192-0494

HR
HURST-ROSCHÉ ENGINEERS, INC.

FILE NAME =	USER NAME = HURST-ROSCHÉ	DESIGNED - MAR	REVISED -	STATE OF ILLINOIS DEPARTMENT OF TRANSPORTATION	SCHEDULES OF QUANTITIES	F.A.U. RTE.	SECTION	COUNTY	TOTAL SHEETS	SHEET NO.	
x:\projects\current\192-0494\p0401a.dgn	ma lene resurfacing\dgn\1920494.dgn	DRAWN - TWC	REVISED -			9197	13-00040-01-RS	ST. CLAIR	12	5	
PLT SCALE = 1/8"=1'-0"	PLT DATE = 9/11/2014	CHECKED - JJC	REVISED -			SCALE: NONE		SHEET NO. 1 OF 1 SHEETS		STA. TO STA.	ILLINOIS FED. AID PROJECT
		DATE - 7-23-14	REVISED -							CONTRACT NO. 97573	

PLAN	DATE
REVISED	
NO.	
BY	
DATE	
PROJECT	
NO.	
BY	
DATE	
PROJECT	
NO.	

PROFILE	DATE
REVISED	
NO.	
BY	
DATE	
PROJECT	
NO.	
BY	
DATE	
PROJECT	
NO.	

HURST-ROSCHKE ENGINEERS, INC.
 HILLSBORO, ILLINOIS 62049
 (217) 532-3959 FAX (217) 532-3212
 HR# 192-0491

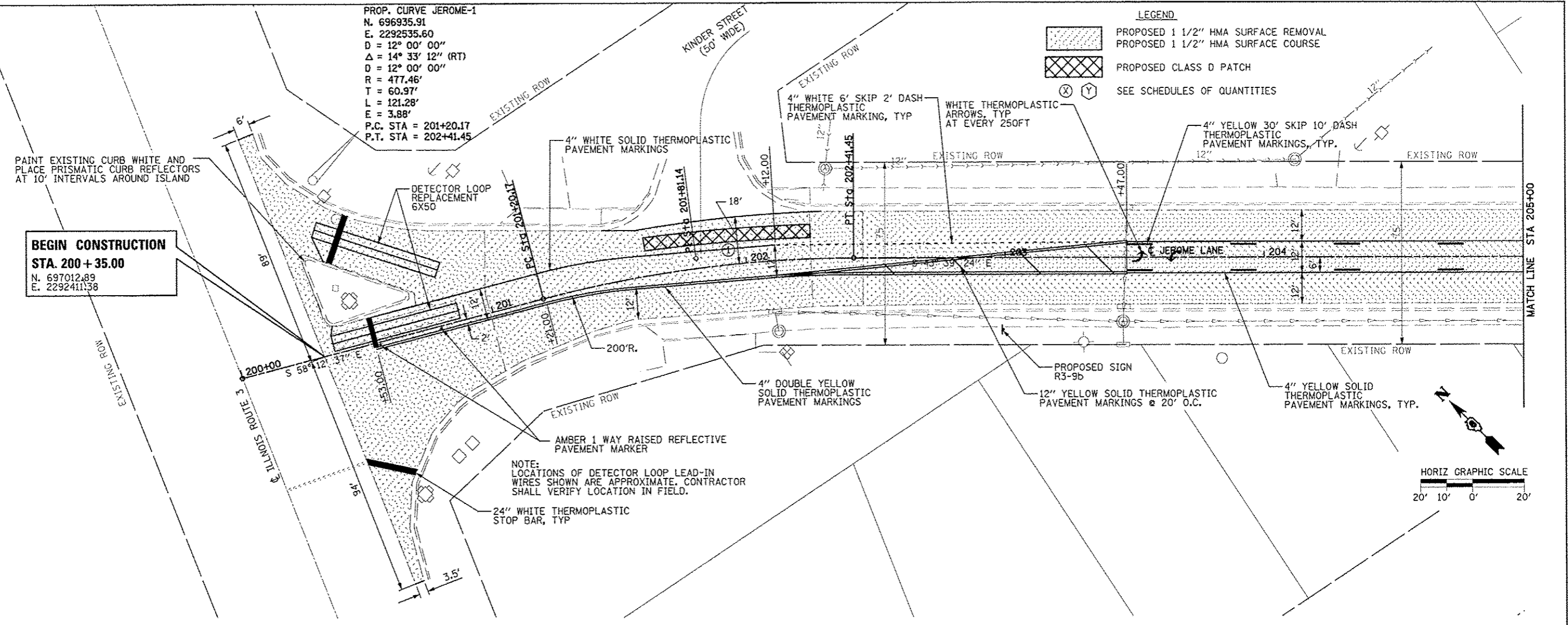


PROP. CURVE JEROME-1
 N. 696935.91
 E. 2292535.60
 D = 12° 00' 00"
 Δ = 14° 33' 12" (RT)
 D = 12° 00' 00"
 R = 477.46'
 T = 60.97'
 L = 121.28'
 E = 3.88'
 P.C. STA = 201+20.17
 P.T. STA = 202+41.45

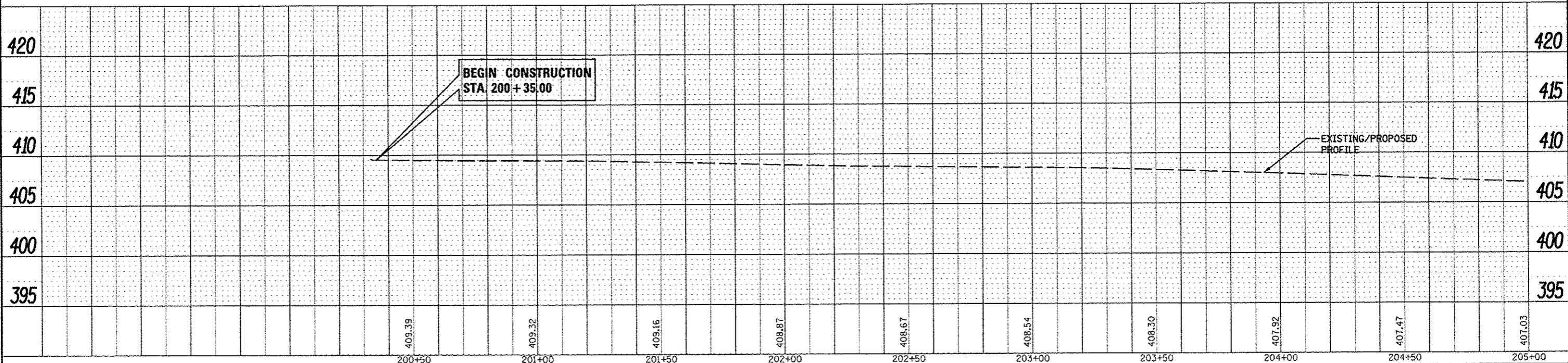
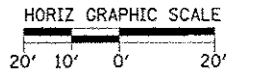
LEGEND
 PROPOSED 1 1/2" HMA SURFACE REMOVAL
 PROPOSED 1 1/2" HMA SURFACE COURSE
 PROPOSED CLASS D PATCH
 SEE SCHEDULES OF QUANTITIES

PAINT EXISTING CURB WHITE AND PLACE PRISMATIC CURB REFLECTORS AT 10' INTERVALS AROUND ISLAND

BEGIN CONSTRUCTION
 STA. 200 + 35.00
 N. 697012.89
 E. 2292411.38



NOTE:
 LOCATIONS OF DETECTOR LOOP LEAD-IN WIRES SHOWN ARE APPROXIMATE. CONTRACTOR SHALL VERIFY LOCATION IN FIELD.



FILE NAME	USER NAME - HURST-ROSCHKE	DESIGNED - MAR	REVISED -	STATE OF ILLINOIS DEPARTMENT OF TRANSPORTATION	JEROME LANE PLAN AND PROFILE	F.A.U. RTE. 9197	SECTION 13-00040-01-RS	COUNTY ST CLAIR	TOTAL SHEETS 12	SHEET NO. 6	
PROJECT	DATE 7-23-14	CHECKED - JJC	REVISED -			SCALE: 1"=20'	SHEET NO. 1 OF 7 SHEETS	STA. 200+00 TO STA. 205+00	CONTRACT NO. 97573		ILLINOIS FED. AID PROJECT
PLOT SCALE - 1/8" = 1' IN.	DATE 9/11/2014	DRAWN - TWC	REVISED -								
PLOT DATE - 9/11/2014		CHECKED - JJC	REVISED -								

PLAN	DATE
SURVEYED	BY
ALUMINUM CHECKED	BY
ST. OF 8" CHECKED	BY
NO. CAD FILE NAME	

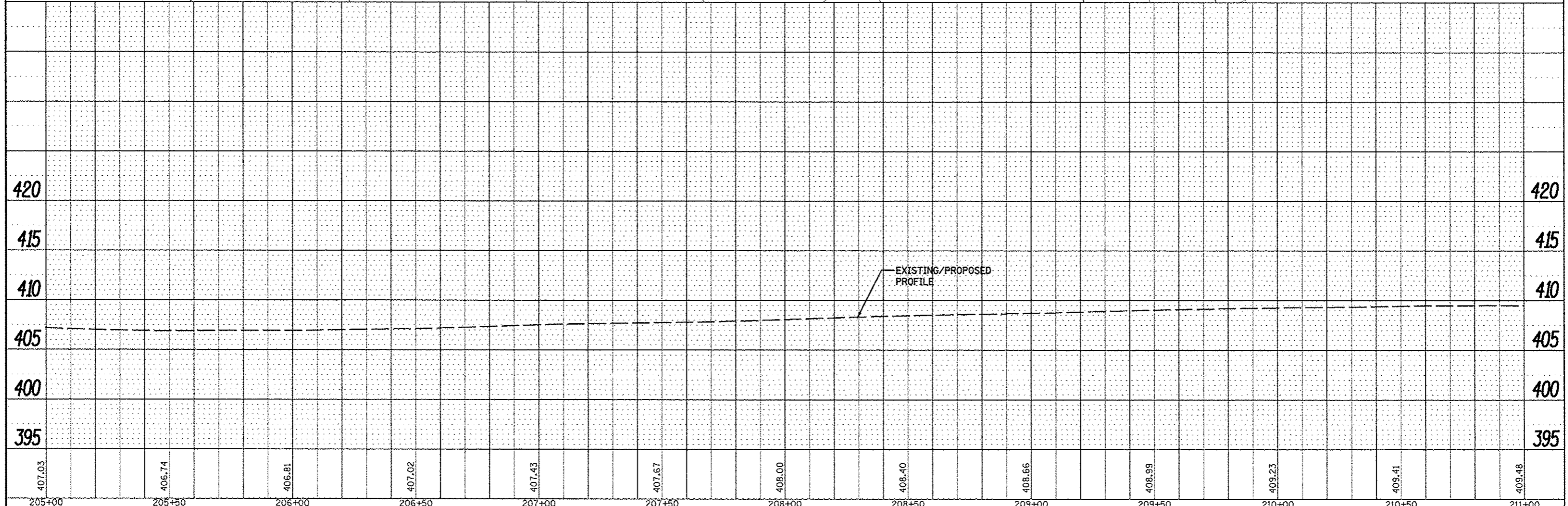
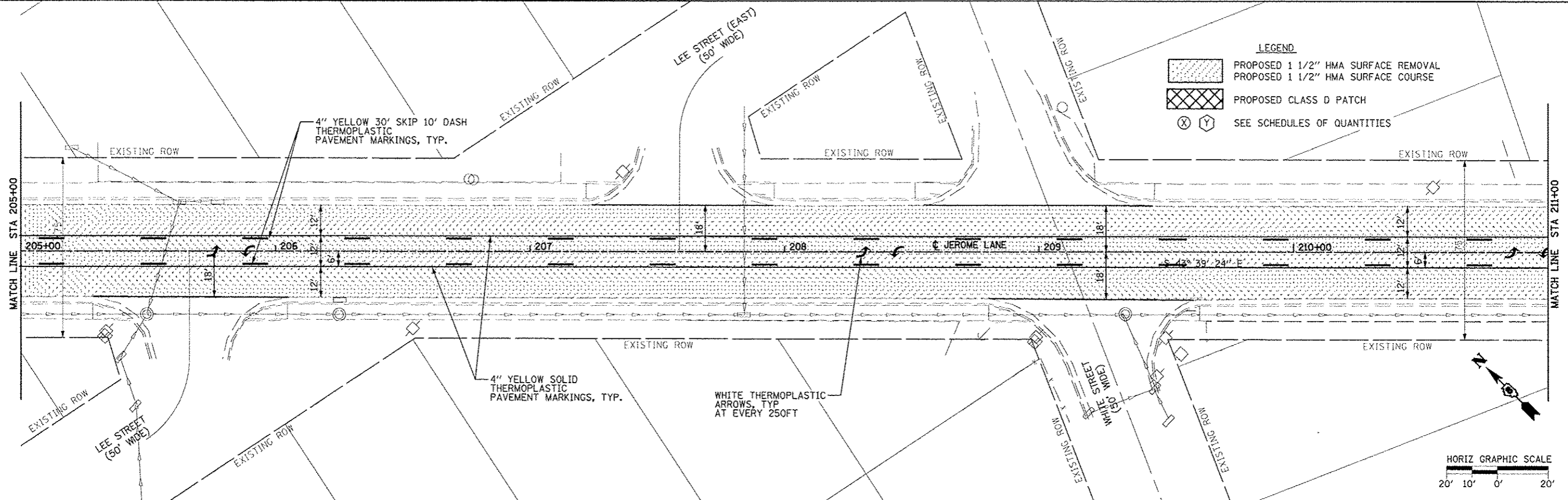
PROFILE	DATE
NO. DATE	BY
STRUCTURE	NO.

HURST-ROSCHKE ENGINEERS, INC.
 HILLSBORO, ILLINOIS 62649
 (217)532-3959 FAX (217)532-3212
 HR# 192-0494



LEGEND

	PROPOSED 1 1/2" HMA SURFACE REMOVAL
	PROPOSED 1 1/2" HMA SURFACE COURSE
	PROPOSED CLASS D PATCH
	SEE SCHEDULES OF QUANTITIES
	SEE SCHEDULES OF QUANTITIES



407.03	406.74	406.81	407.02	407.43	407.67	408.00	408.40	408.66	408.99	409.23	409.41	409.48
205+00	205+50	206+00	206+50	207+00	207+50	208+00	208+50	209+00	209+50	210+00	210+50	211+00

STATE OF ILLINOIS
 DEPARTMENT OF TRANSPORTATION

JEROME LANE PLAN AND PROFILE

F.A.U. RTE.	SECTION	COUNTY	TOTAL SHEETS	SHEET NO.
9197	13-00040-01-RS	ST. CLAIR	12	7
CONTRACT NO. 97573				

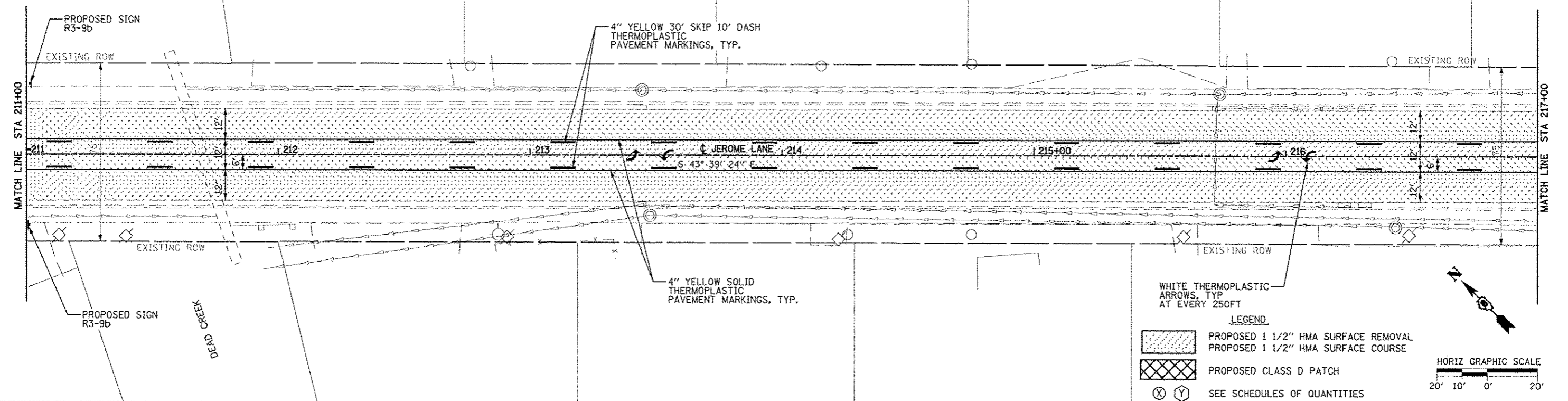
SCALE: 1"=20' SHEET NO. 2 OF 7 SHEETS STA. 205+00 TO STA. 211+00

ILLINOIS FED. AID PROJECT

PLAN
 DESIGNED BY: []
 CHECKED BY: []
 DATE: []

PROFILE
 DESIGNED BY: []
 CHECKED BY: []
 DATE: []

HR HURST-ROSCHKE ENGINEERS, INC.
 HILLSBORO, ILLINOIS 62149
 (217) 532-3959 FAX (217) 532-3212
 HR# 192-0494

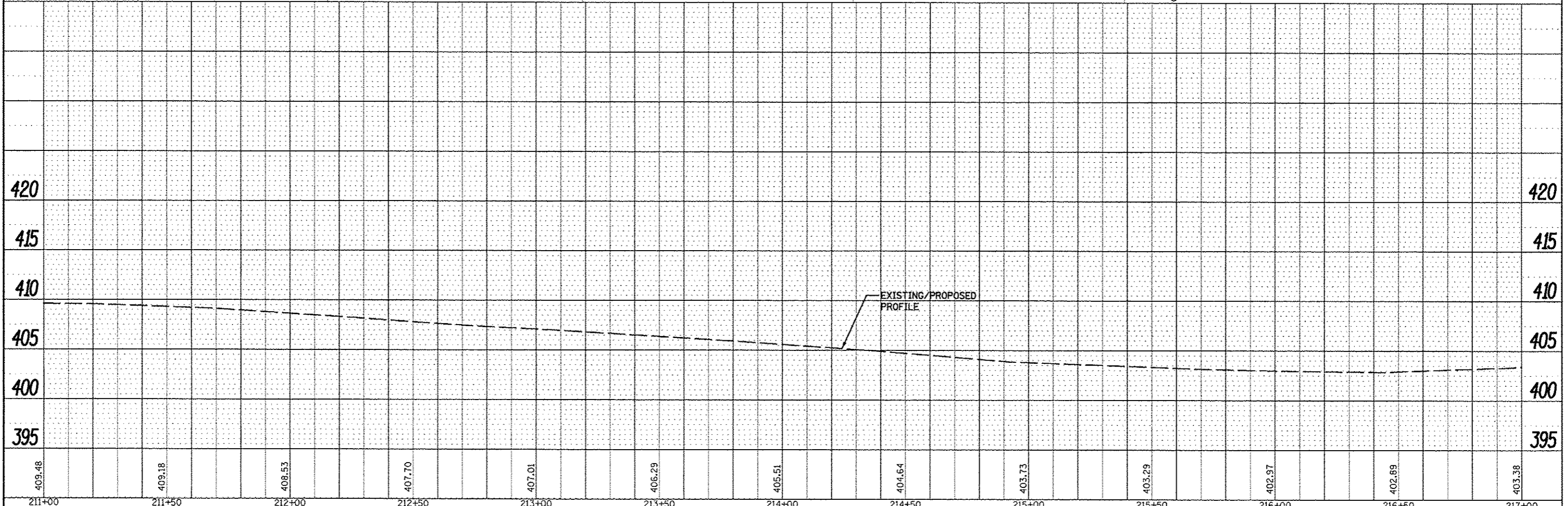


LEGEND

- PROPOSED 1 1/2" HMA SURFACE REMOVAL
- PROPOSED 1 1/2" HMA SURFACE COURSE
- PROPOSED CLASS D PATCH
- SEE SCHEDULES OF QUANTITIES
- SEE SCHEDULES OF QUANTITIES

WHITE THERMOPLASTIC ARROWS, TYP AT EVERY 250FT

HORIZ GRAPHIC SCALE
 20' 10' 0' 20'



211+00	211+50	212+00	212+50	213+00	213+50	214+00	214+50	215+00	215+50	216+00	216+50	217+00
409.48	409.18	408.53	407.70	407.01	406.29	405.51	404.64	403.73	403.29	402.97	402.69	403.38

STATE OF ILLINOIS
 DEPARTMENT OF TRANSPORTATION

JEROME LANE PLAN AND PROFILE

F.A.U. RTE. 9197	SECTION 13-00040-01-RS	COUNTY ST CLAIR	TOTAL SHEETS 12	SHEET NO. 8
CONTRACT NO. 97573			ILLINOIS FED. AID PROJECT	

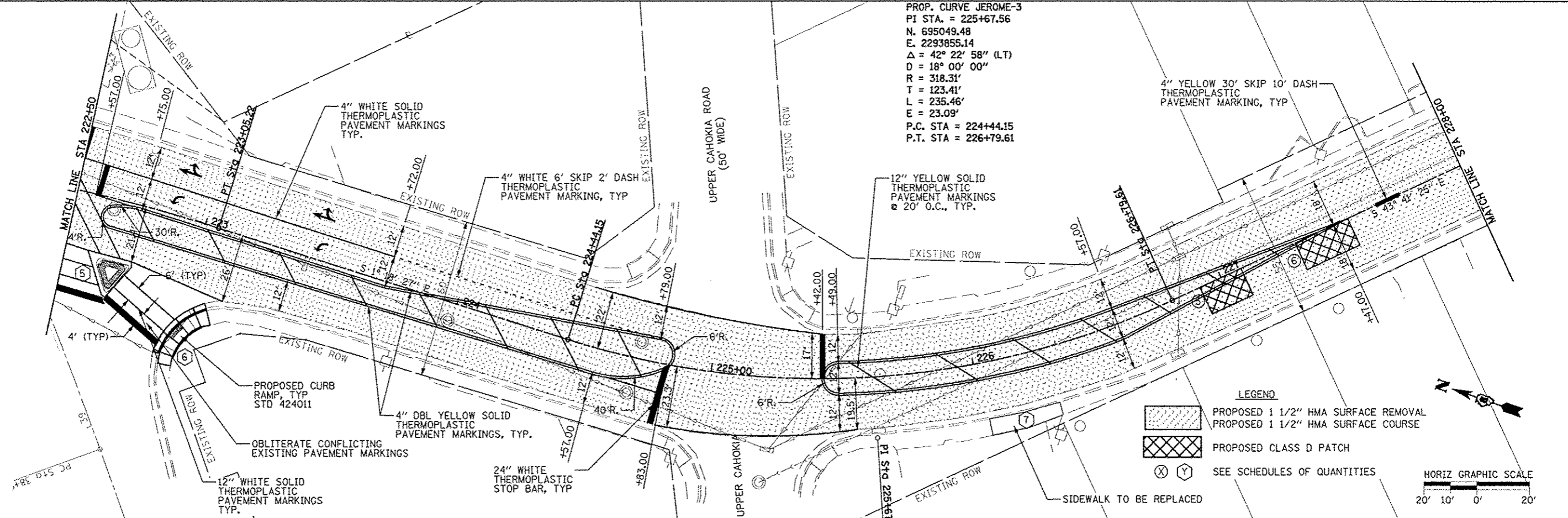
SCALE: 1"=20' SHEET NO. 3 OF 7 SHEETS STA. 211+00 TO STA. 217+00

PLAN	DATE
BY	
CHECKED	
DATE	
NO.	

PROFILE	DATE
BY	
CHECKED	
DATE	
NO.	

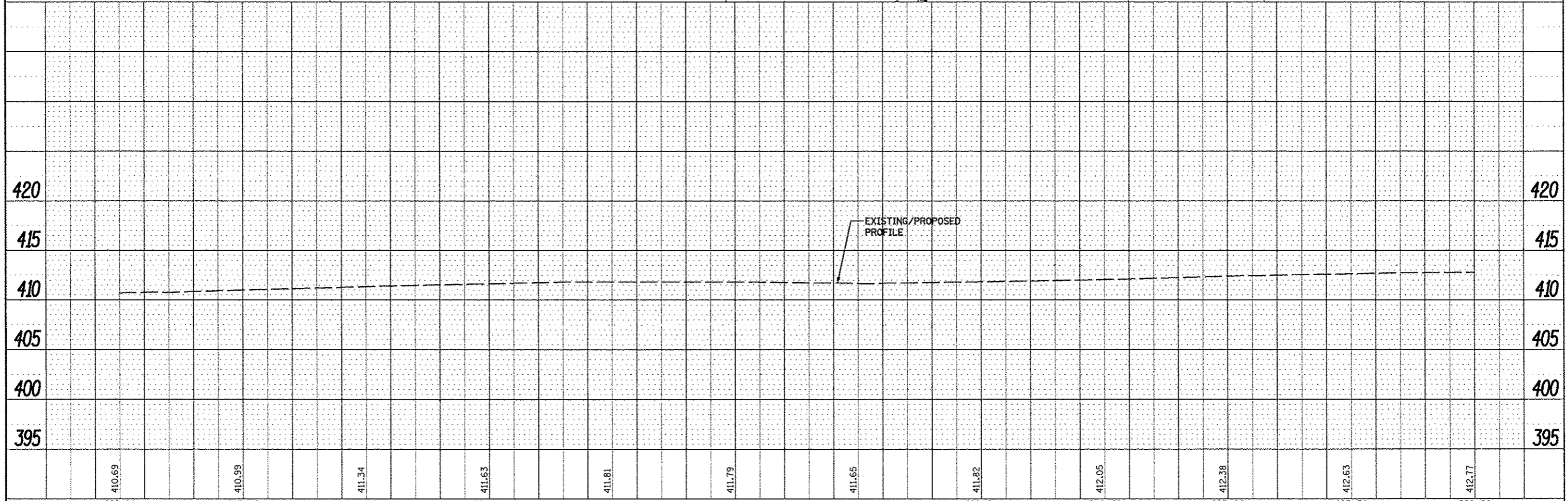
HR
HURST-ROSCHKE ENGINEERS, INC.
 HILLSBORO, ILLINOIS 62499
 (217)532-3959 FAX (217)532-3312
 HR# 192-0494

PROP. CURVE JEROME-3
 PI STA. = 225+67.56
 N. 695049.48
 E. 2293855.14
 $\Delta = 42^\circ 22' 58''$ (LT)
 $D = 18^\circ 00' 00''$
 $R = 318.31'$
 $T = 123.41'$
 $L = 235.46'$
 $E = 23.09'$
 P.C. STA = 224+44.15
 P.T. STA = 226+79.61



LEGEND

	PROPOSED 1 1/2\" HMA SURFACE REMOVAL
	PROPOSED 1 1/2\" HMA SURFACE COURSE
	PROPOSED CLASS D PATCH
	SEE SCHEDULES OF QUANTITIES
	SEE SCHEDULES OF QUANTITIES



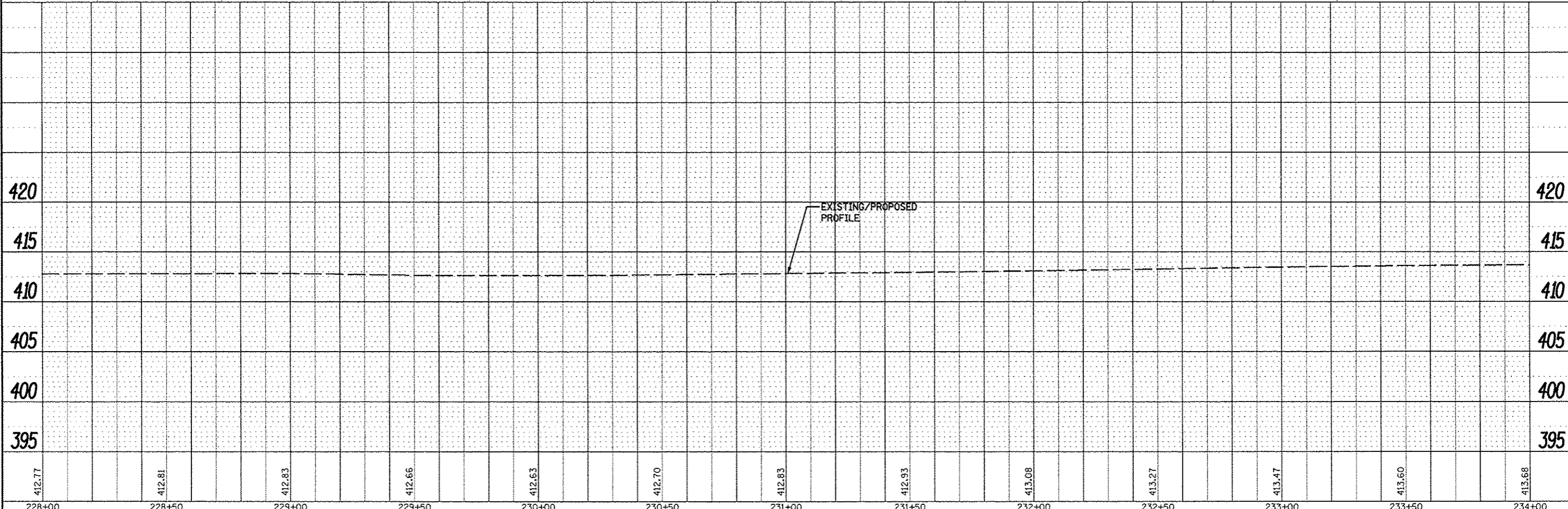
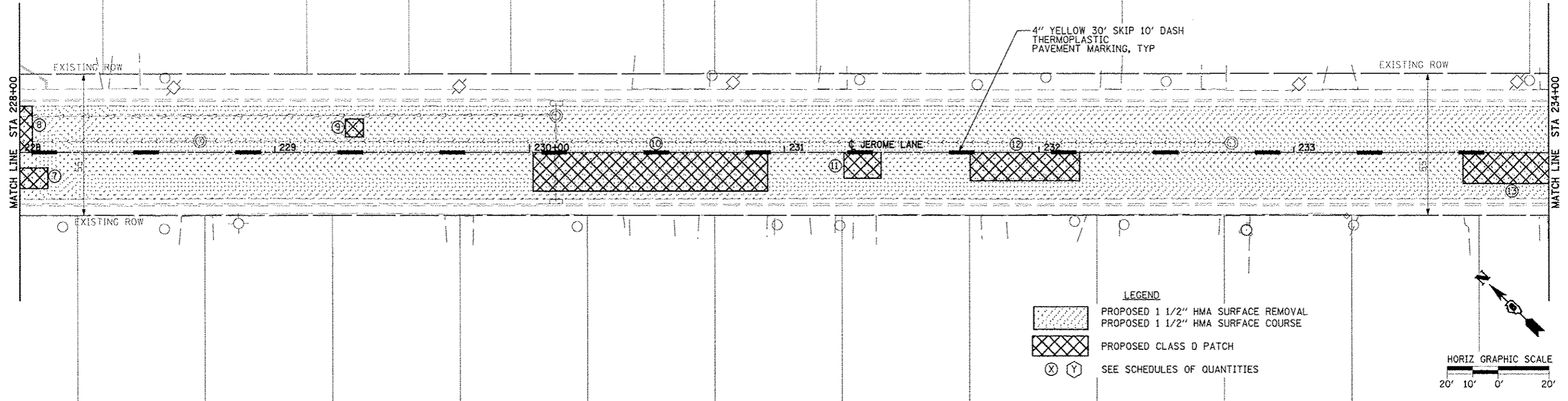
FILE NAME =	USER NAME = HRST-ROSCHKE	DESIGNED - MAR	REVISED -	STATE OF ILLINOIS DEPARTMENT OF TRANSPORTATION		JEROME LANE PLAN AND PROFILE		F.A.U. RTE.	SECTION	COUNTY	TOTAL SHEETS	SHEET NO.
...	...	DRAWN - TWC	REVISED -					9197	13-00040-01-RS	ST CLAIR	12	10
...	...	CHECKED - JUC	REVISED -					CONTRACT NO. 97573				
...	...	DATE - 7-23-14	REVISED -					ILLINOIS FED. AID PROJECT				

PLAN
 SURVEYED BY DATE
 PLotted BY DATE
 NOTE BOOK NO. 137 MAY CHECKED
 NO. 137 MAY FILE NAME

PROFILE
 SURVEYED BY DATE
 PLotted BY DATE
 NOTE BOOK NO. 137 MAY CHECKED
 NO. 137 MAY FILE NAME

HURST-ROSCHKE ENGINEERS, INC.
 HILLSBORO, ILLINOIS 62049
 (217) 532-3959 FAX (217) 532-3112
 HR# 192-0494

HR
 HURST-ROSCHKE ENGINEERS, INC.



FILE NAME: \\projects\mrc\192-0494\csh\jor... USER NAME: HURST-ROSCHKE LANE: Jeromelane\jor\jorPP06.dgn PLOT SCALE: 48,000 / 1" = 100' PLOT DATE: 9/11/2014	DESIGNED - MAR DRAWN - TWC CHECKED - JJC DATE - 7-23-14	REVISED - REVISED - REVISED - REVISED -	STATE OF ILLINOIS DEPARTMENT OF TRANSPORTATION	JEROME LANE PLAN AND PROFILE SCALE: 1"=20' SHEET NO. 6 OF 7 SHEETS STA. 228+00 TO STA. 234+00	F.A.U. RTE. 9197 SECTION 13-00040-01-RS COUNTY ST CLAIR TOTAL SHEETS 12 SHEET NO. 11 CONTRACT NO. 97573 ILLINOIS FED. AID PROJECT
---	--	--	---	--	--

