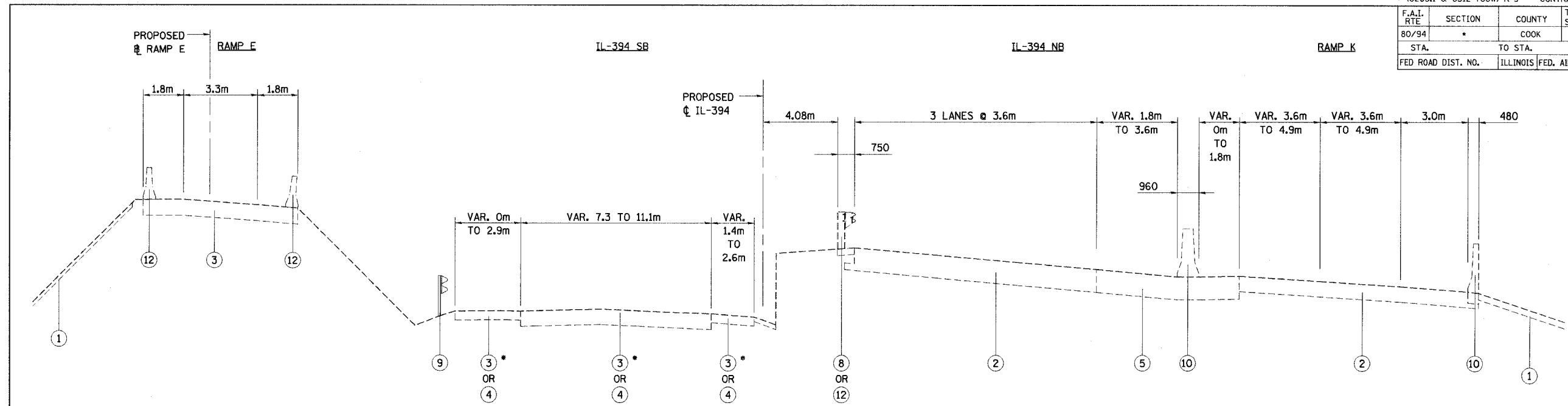
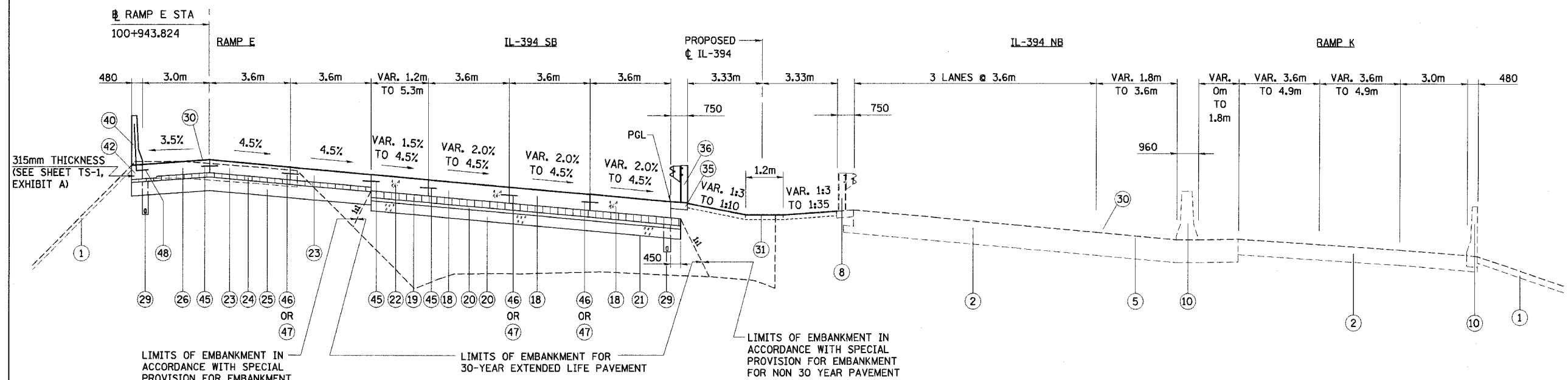


F.A.I. RTE	SECTION	COUNTY	TOTAL SHEETS	SHEET NO.
80/94	*	COOK	870	32
STA.		TO STA.		
FED ROAD DIST. NO.		ILLINOIS FED. AID PROJECT		



EXISTING TYPICAL SECTION - IL ROUTE 394 SB
 IL-394 STATION 39+601.837 TO STATION 39+819.214
 RAMP E STATION 101+018.746 TO STATION 100+796.750
 SUPERELEVATION STA. 39+601.837 TO STA. 39+770.000
 TRANSITION TO NORMAL CROWN STA. 39+770.000 TO STA. 39+819.214
 BRIDGE OMISSION STA. 39+714.465 TO STA. 39+789.409
 LOOKING NORTH

* PAVEMENT BREAKING,
 STA. 39+794.760 TO STA. 39+819.214
 PAVEMENT REMOVAL,
 STA. 39+601.837 TO STA. 39+713.684



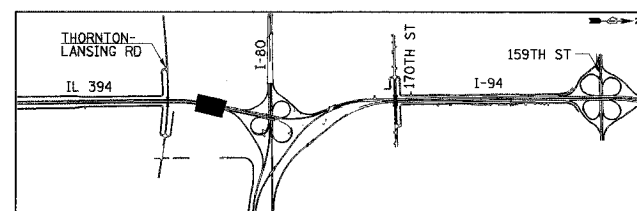
PROPOSED TYPICAL SECTION - IL ROUTE 394 SB
 IL-394 STATION 39+601.837 TO STATION 39+819.214
 RAMP E STATION 101+018.746 TO STATION 100+796.750
 SUPERELEVATION STA. 39+601.837 TO STA. 39+770.000
 TRANSITION TO NORMAL CROWN STA. 39+770.000 TO STA. 39+819.214
 BRIDGE OMISSION STA. 39+714.465 TO STA. 39+789.409
 LOOKING NORTH

LIMITS OF EMBANKMENT IN ACCORDANCE WITH SPECIAL PROVISION FOR EMBANKMENT FOR NON 30 YEAR PAVEMENT

LIMITS OF EMBANKMENT FOR 30-YEAR EXTENDED LIFE PAVEMENT

LIMITS OF EMBANKMENT IN ACCORDANCE WITH SPECIAL PROVISION FOR EMBANKMENT FOR NON 30 YEAR PAVEMENT

NOTE: SEE TS-1 FOR LEGEND AND NOTES.



REVISIONS	
NAME	DATE

TS-15

ILLINOIS DEPARTMENT OF TRANSPORTATION
 I-94 EAST BOUND / IL 394 SOUTH BOUND

**TYPICAL SECTIONS
 IL-394 SB**

HORIZ SCALE: N.T.S.
 VERT SCALE: N.T.S.
 DATE: JULY 18, 2005

DRAWN BY: JYMC
 CHECKED BY: JES

HNTB