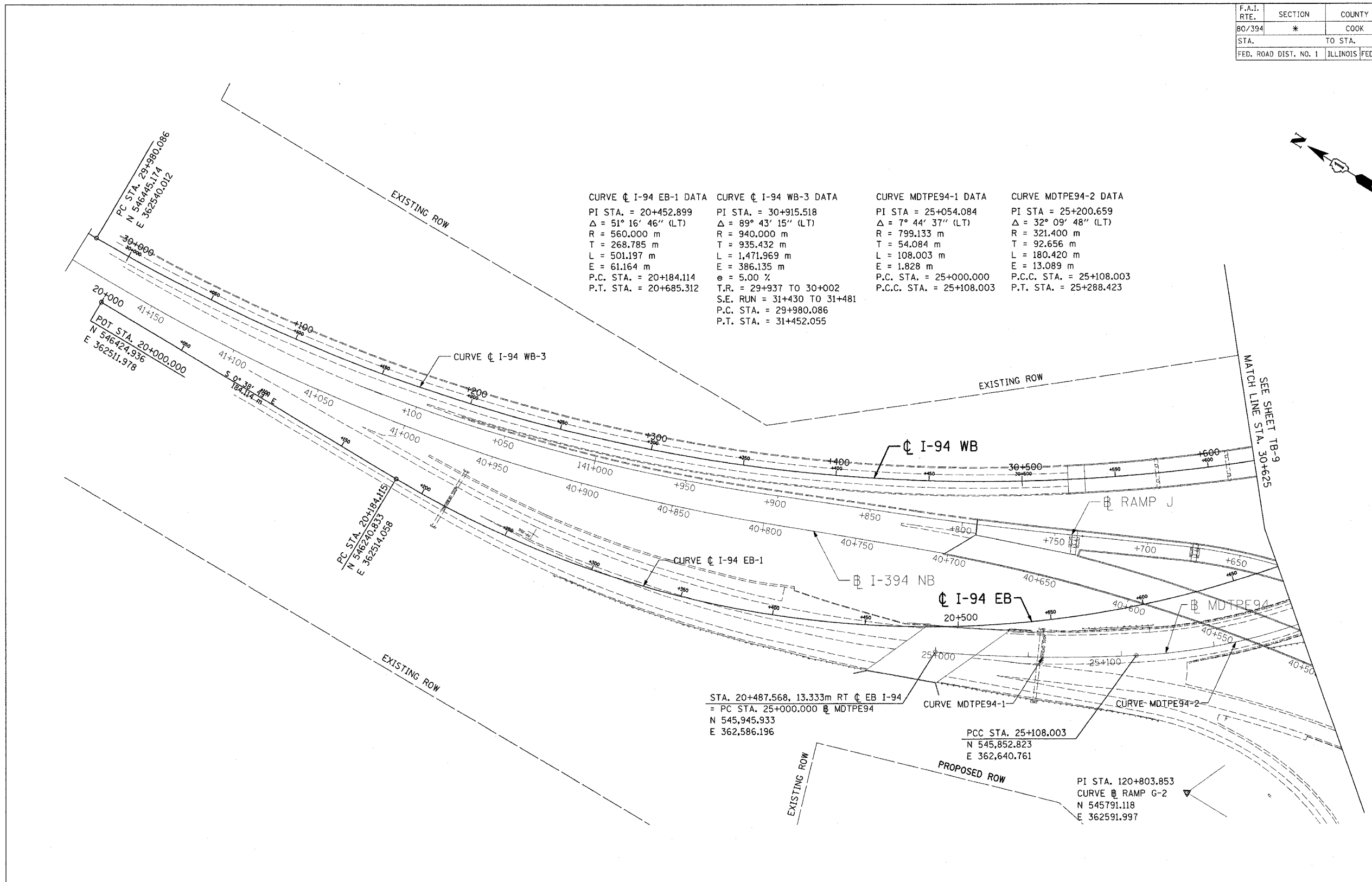


* (0203.1 & 0312-708W) R-3		CONTRACT #62108	
F.A.I. RTE.	SECTION	COUNTY	TOTAL SHEET NO.
80/394	*	COOK	870 59
STA.		TO STA.	
FED. ROAD DIST. NO. 1		ILLINOIS FED. AID PROJECT	



CURVE ϕ I-94 EB-1 DATA	CURVE ϕ I-94 WB-3 DATA	CURVE MDTP E94-1 DATA	CURVE MDTP E94-2 DATA
PI STA. = 20+452.899	PI STA. = 30+915.518	PI STA. = 25+054.084	PI STA. = 25+200.659
Δ = 51° 16' 46" (LT)	Δ = 89° 43' 15" (LT)	Δ = 7° 44' 37" (LT)	Δ = 32° 09' 48" (LT)
R = 560.000 m	R = 940.000 m	R = 799.133 m	R = 321.400 m
T = 268.785 m	T = 935.432 m	T = 54.084 m	T = 92.656 m
L = 501.197 m	L = 1,471.969 m	L = 108.003 m	L = 180.420 m
E = 61.164 m	E = 386.135 m	E = 1.828 m	E = 13.089 m
P.C. STA. = 20+184.114	ϵ = 5.00 %	P.C. STA. = 25+000.000	P.C.C. STA. = 25+108.003
P.T. STA. = 20+685.312	T.R. = 29+937 TO 30+002	P.C.C. STA. = 25+108.003	P.T. STA. = 25+288.423
	S.E. RUN = 31+430 TO 31+481		
	P.C. STA. = 29+980.086		
	P.T. STA. = 31+452.055		

STA. 20+487.568, 13.333m RT ϕ EB I-94
 = PC STA. 25+000.000 ϕ MDTP E94
 N 545,945.933
 E 362,586.196

PCC STA. 25+108.003
 N 545,852.823
 E 362,640.761

PI STA. 120+803.853
 CURVE ϕ RAMP G-2
 N 545791.118
 E 362591.997

TB-8

	REVISIONS		ILLINOIS DEPARTMENT OF TRANSPORTATION I-94 EASTBOUND / IL 394 SOUTHBOUND HORIZONTAL ALIGNMENT SCALE: 1:1000 DATE: JULY 18, 2005 DRAWN BY: CTT CHECKED BY: RCH
	NAME	DATE	

I:\Projects\0203.1 & 0312-708W\0312-708W.dwg 05/12/2005 09:50:00 AM