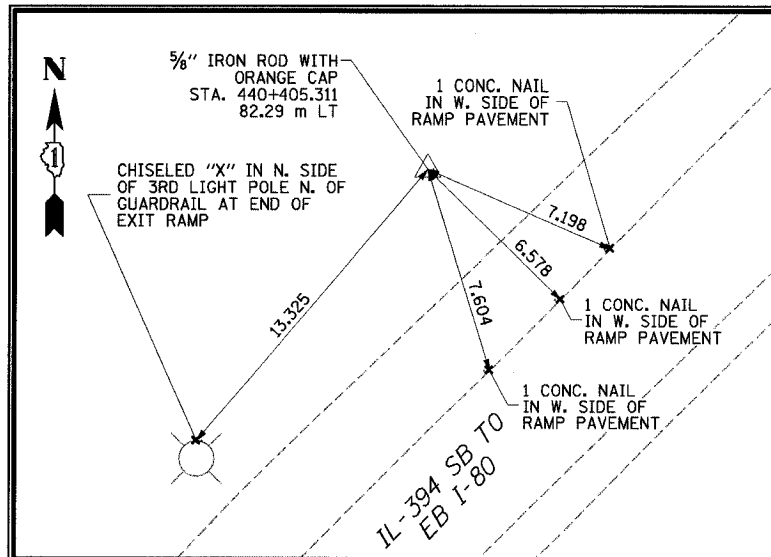
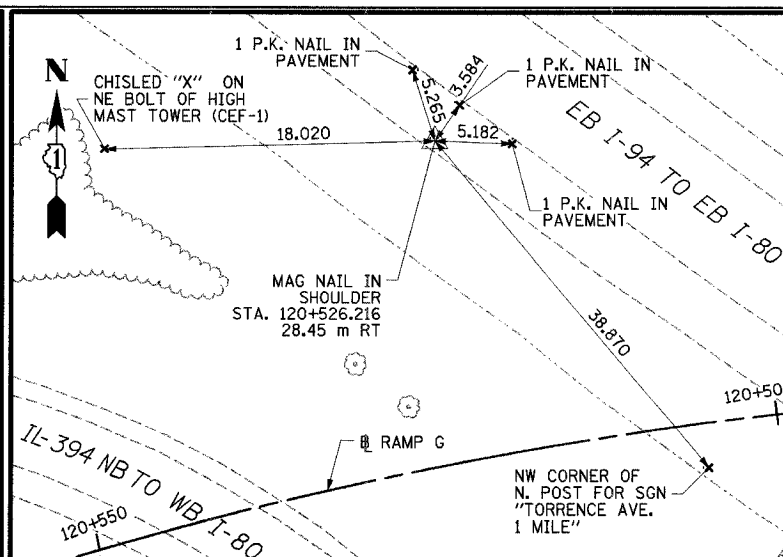


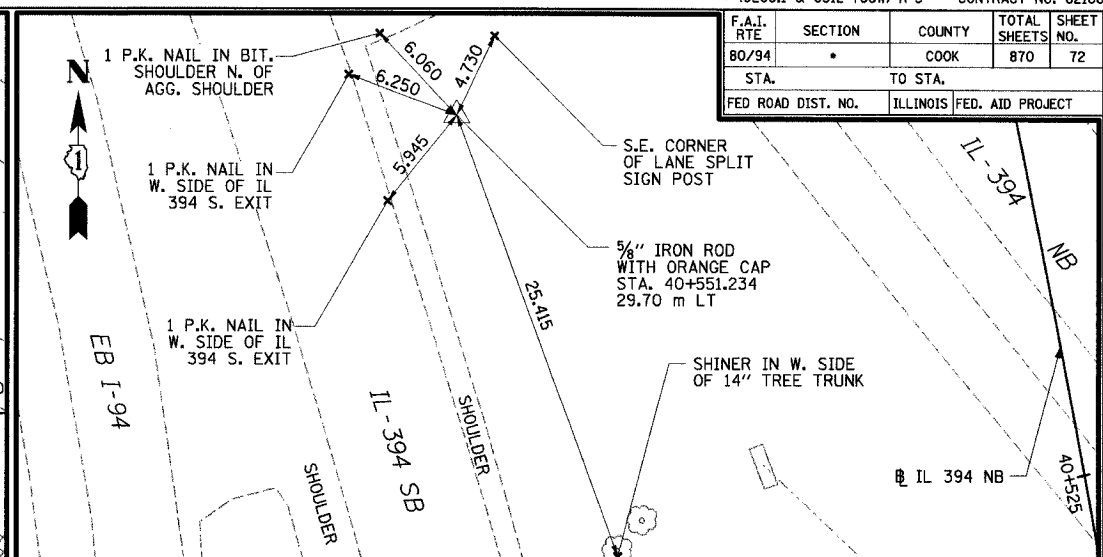
F.A.I. RTE.	SECTION	COUNTY	TOTAL SHEETS NO.
80/94	*	COOK	870
STA.	TO STA.		
FED ROAD DIST. NO.	ILLINOIS	FED. AID PROJECT	



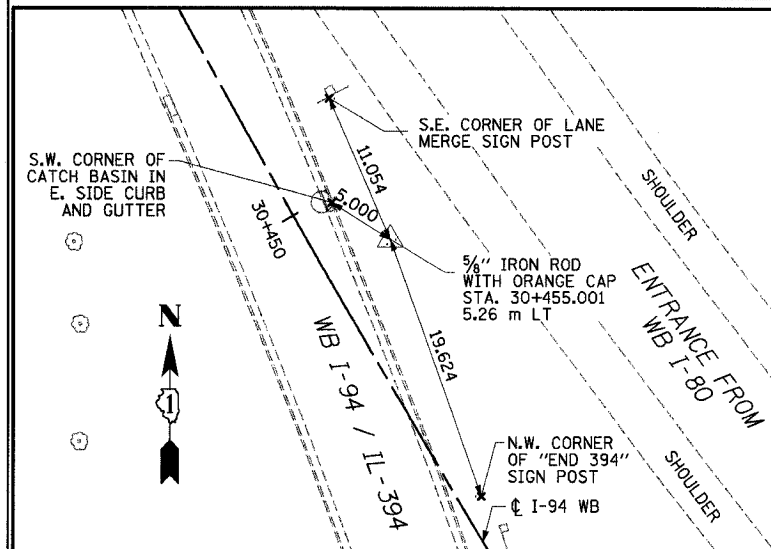
ACE #182 NORTHING: 545666.868 EASTING: 362567.130 ELEVATION = 184.343



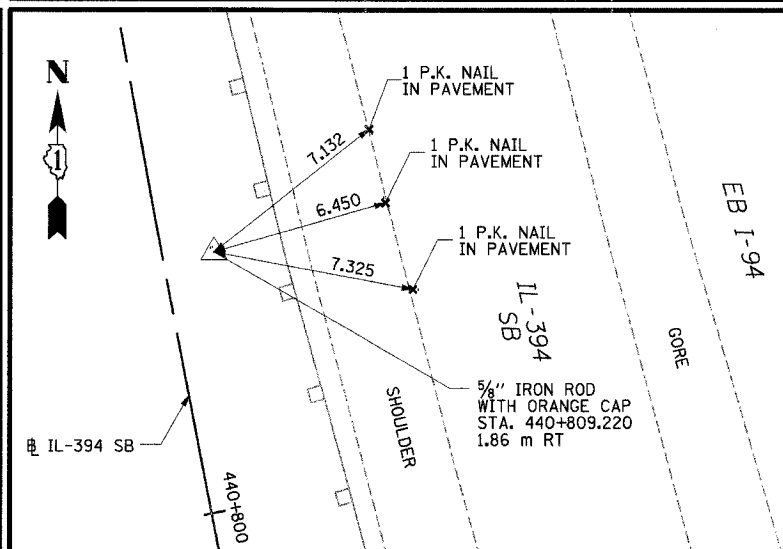
ACE #183 NORTHING: 545658.422 EASTING: 362831.481 ELEVATION = 183.454



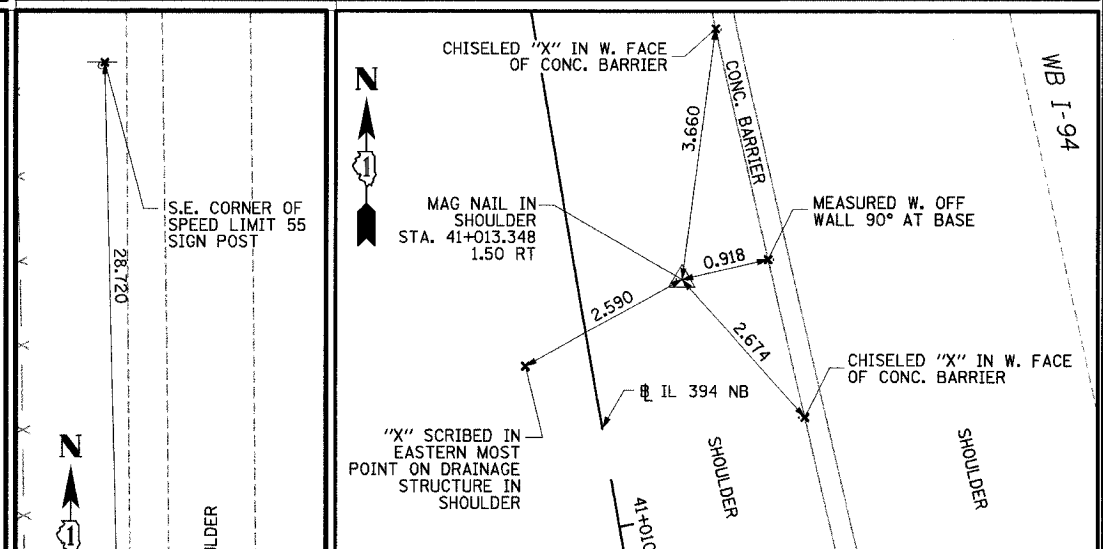
ACE #184 NORTHING: 545818.601 EASTING: 362646.369 ELEVATION = 183.892



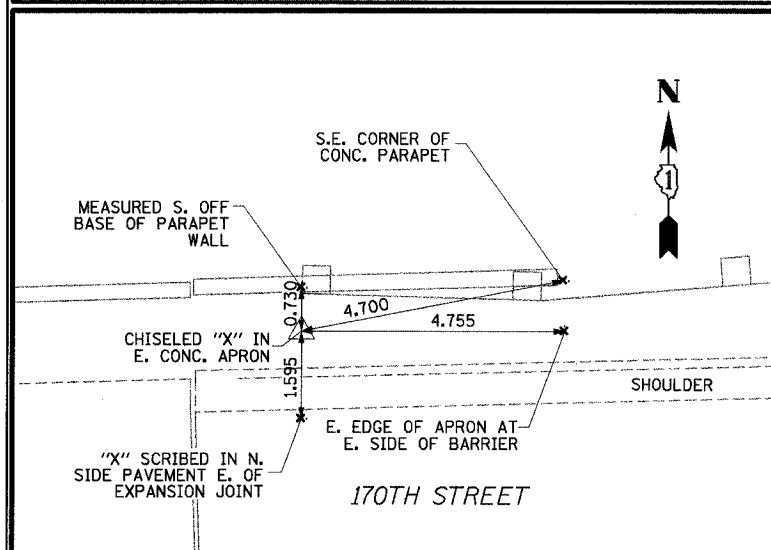
ACE #185A NORTHING: 545994.803 EASTING: 362669.411 ELEVATION = 184.669



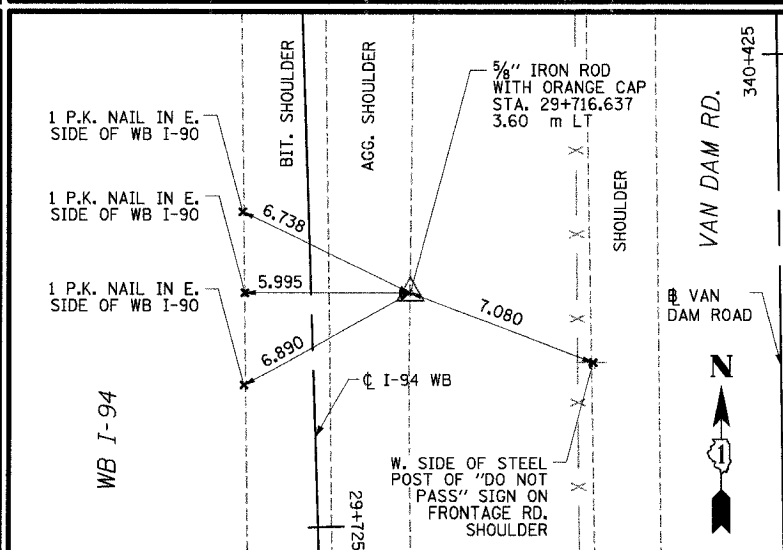
ACE #186 NORTHING: 546068.442 EASTING: 362525.883 ELEVATION = 182.818



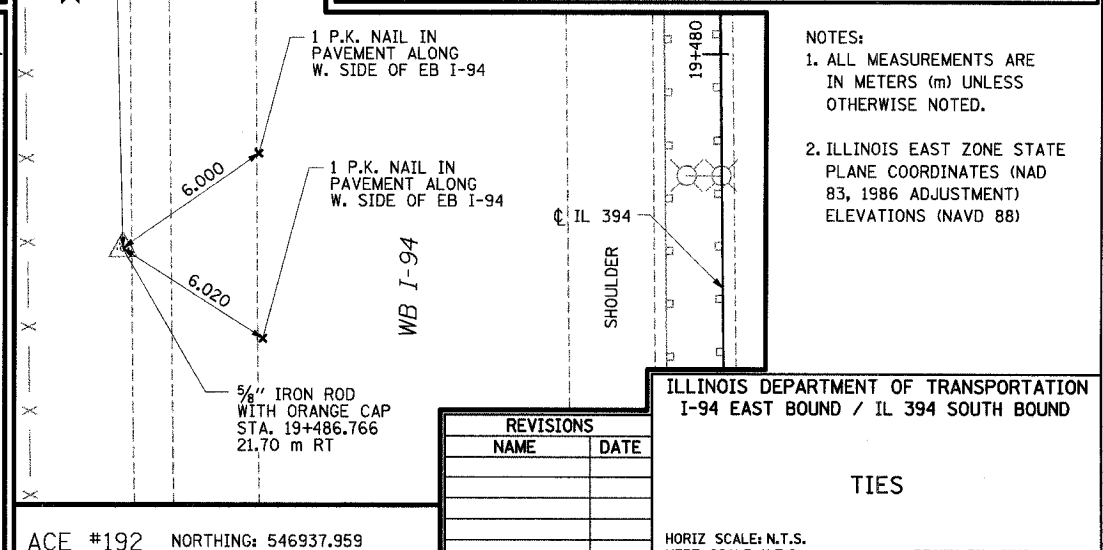
ACE #187 NORTHING: 546265.341 EASTING: 362539.932 ELEVATION = 183.228



ACE #188 NORTHING: 546455.385 EASTING: 362551.607 ELEVATION = 188.495



ACE #191 NORTHING: 546708.668 EASTING: 362537.724 ELEVATION = 182.716



ACE #192 NORTHING: 546937.959 EASTING: 362492.106 ELEVATION = 182.540

- NOTES:
1. ALL MEASUREMENTS ARE IN METERS (m) UNLESS OTHERWISE NOTED.
 2. ILLINOIS EAST ZONE STATE PLANE COORDINATES (NAD 83, 1986 ADJUSTMENT) ELEVATIONS (NAVD 88)

REVISIONS	
NAME	DATE

ILLINOIS DEPARTMENT OF TRANSPORTATION
I-94 EAST BOUND / IL 394 SOUTH BOUND

TIES

HORIZ SCALE: N.T.S.
VERT SCALE: N.T.S.
DATE: JULY 18, 2005

DRAWN BY: JYMC
CHECKED BY: JES

