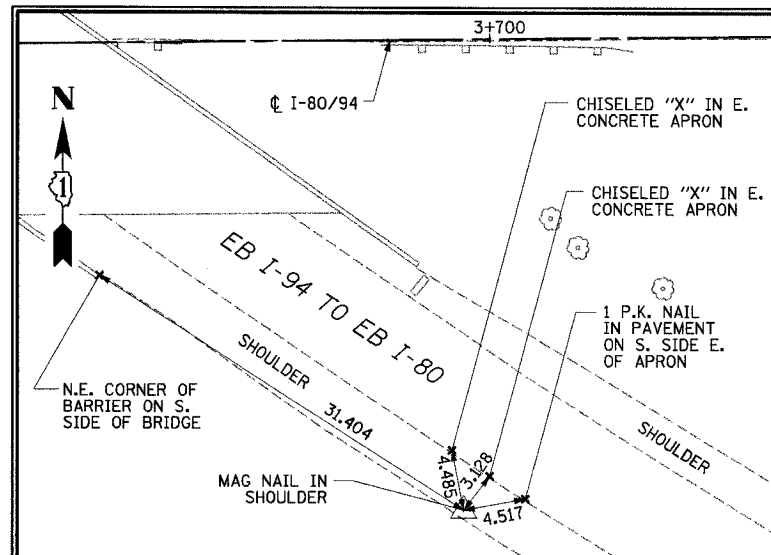
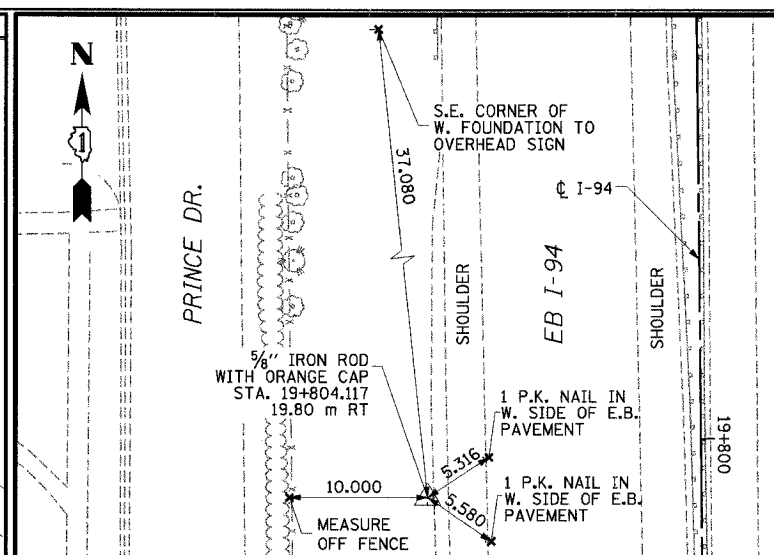


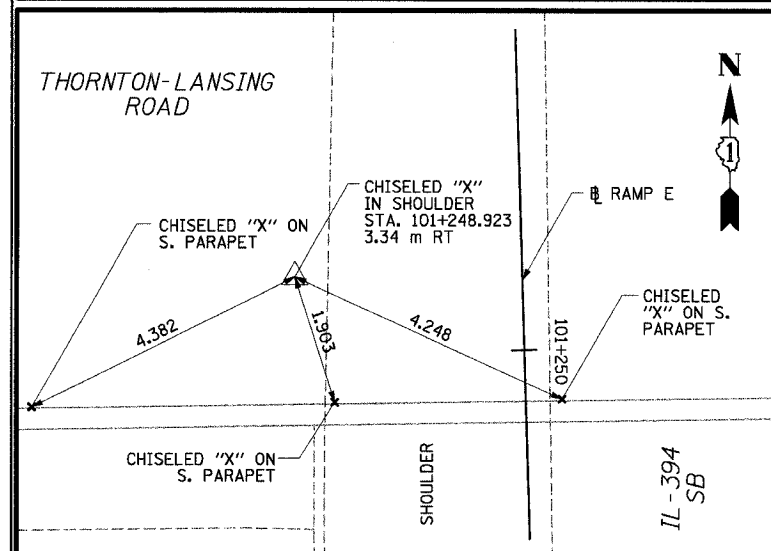
F.A.I. RTE	SECTION	COUNTY	TOTAL SHEETS	SHEET NO.
80/94	*	COOK	870	74
STA.		TO STA.		
FED ROAD DIST. NO.		ILLINOIS FED. AID PROJECT		



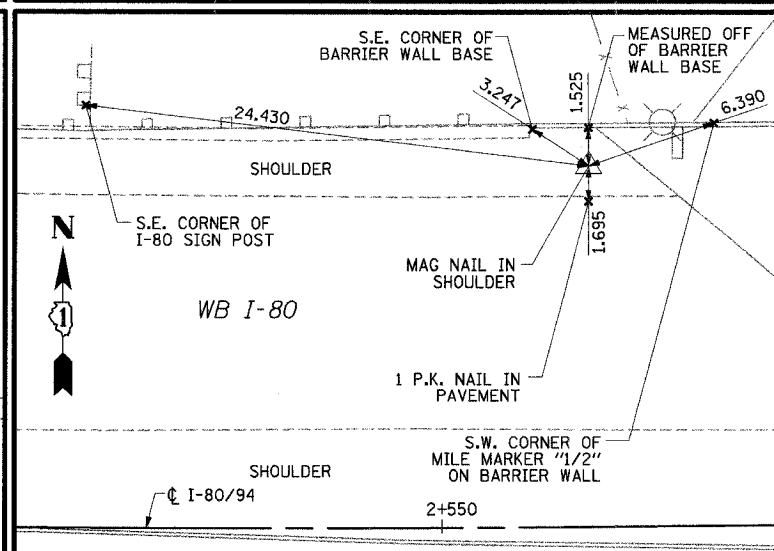
ACE #338 NORTHING: 545444.982 EASTING: 363134.672 ELEVATION = 188.063



ACE #339 NORTHING: 546620.670 EASTING: 362497.652 ELEVATION = 182.921



CP #9335 NORTHING: 544669.676 EASTING: 362509.058 ELEVATION = 196.274



CP #9342 NORTHING: 545483.306 EASTING: 361993.620 ELEVATION = 194.993

- NOTES:
1. ALL MEASUREMENTS ARE IN METERS (m) UNLESS OTHERWISE NOTED.
 2. ILLINOIS EAST ZONE STATE PLANE COORDINATES (NAD 83, 1986 ADJUSTMENT) ELEVATIONS (NAVD 88)

REVISIONS	
NAME	DATE

ILLINOIS DEPARTMENT OF TRANSPORTATION
I-94 EAST BOUND / IL 394 SOUTH BOUND

TIES

HORIZ SCALE: N.T.S.
VERT SCALE: N.T.S.
DATE: JULY 18, 2005

DRAWN BY: JYMC
CHECKED BY: JES

HNTB