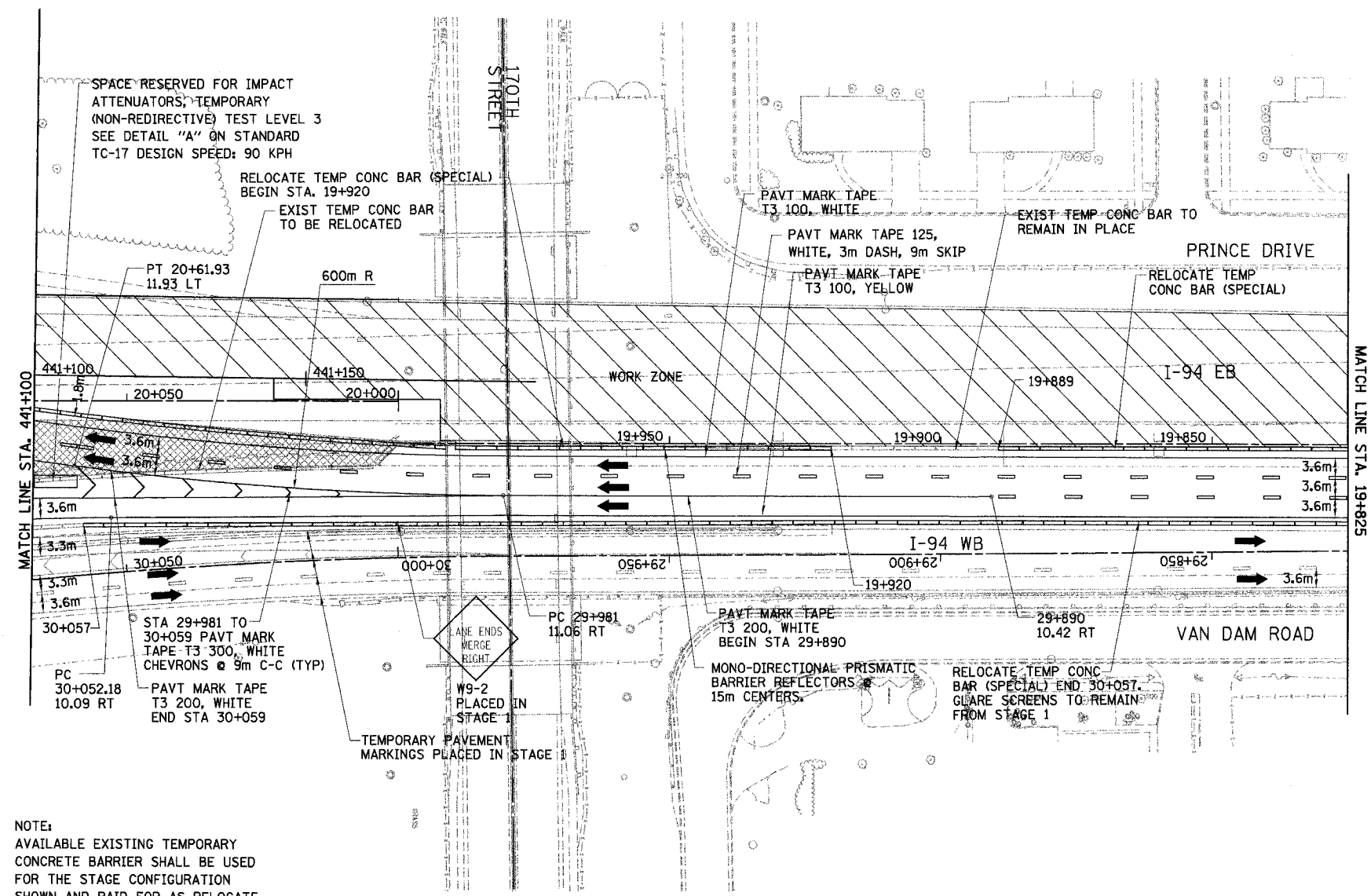
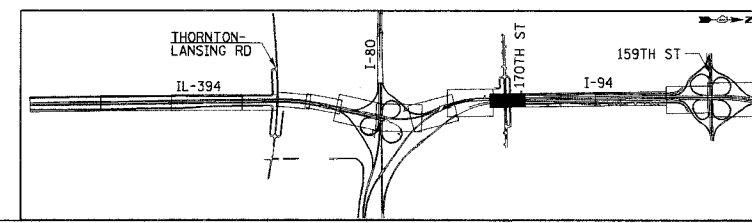


F.A.I. RTE	SECTION	COUNTY	TOTAL SHEETS	SHEET NO.
80/94	*	COOK	870	100
STA. 19+825		TO STA. 41+075		
FED ROAD DIST. NO.		ILLINOIS FED. AID PROJECT		



NOTE:
 AVAILABLE EXISTING TEMPORARY CONCRETE BARRIER SHALL BE USED FOR THE STAGE CONFIGURATION SHOWN AND PAID FOR AS RELOCATE TEMPORARY CONCRETE BARRIER (SPECIAL) (M704002).
 ALL SURPLUS TEMPORARY CONCRETE BARRIER NOT NEEDED FOR THIS STAGE OR FUTURE STAGES SHALL BE REMOVED AND PAID FOR AS REMOVE TEMPORARY CONCRETE BARRIER (MX704200). (SEE DWG. MT-2 FOR TEMPORARY CONCRETE BARRIER SCHEDULE)

LEGEND	
	WORK ZONE
	TEMPORARY PAVEMENT
	TRAFFIC DIRECTION
	LANE CLOSURE
	DRUMS WITH STEADY BURN LIGHTS
	VERTICAL PANELS
	TYPE III BARRICADE WITH 2 FLASHING LIGHTS



REVISIONS	
NAME	DATE

MT-26

ILLINOIS DEPARTMENT OF TRANSPORTATION
 I-94 EAST BOUND / IL 394 SOUTH BOUND

**MAINTENANCE OF TRAFFIC
 IL-394/ I-94 - STAGE 2
 STA. 19+825 TO STA. 441+100**

HORIZ SCALE: 1:500
 VERT SCALE: NONE
 DATE: JULY 18, 2005

DRAWN BY: STS
 CHECKED BY: JES

HNTB