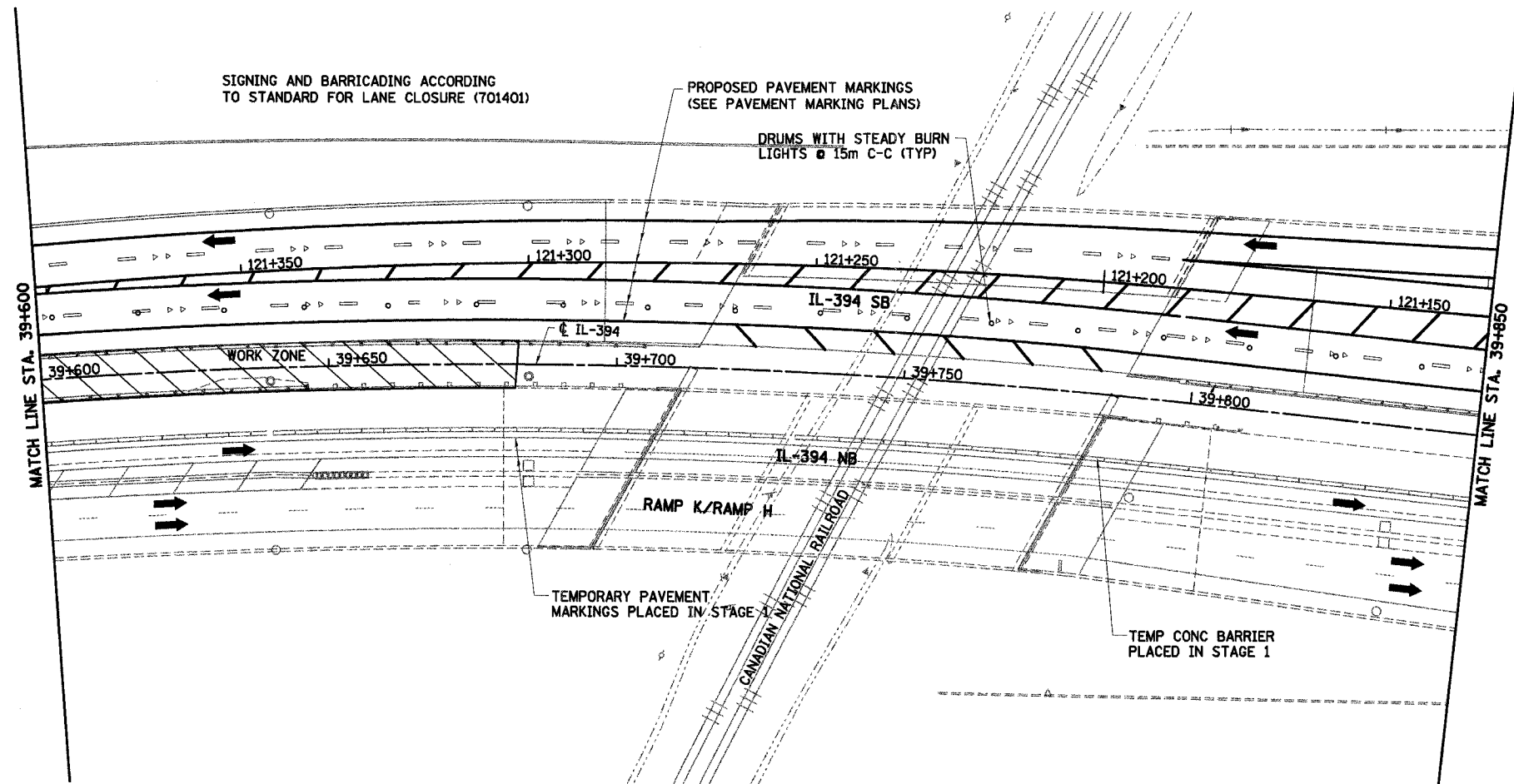
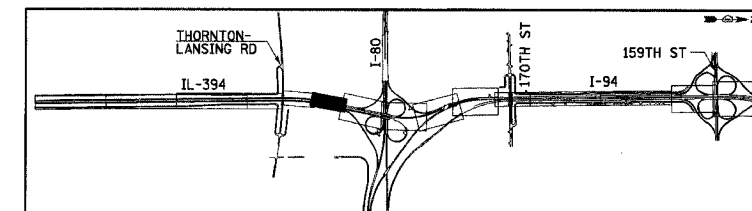


F.A.I. RTE	SECTION	COUNTY	TOTAL SHEETS	SHEET NO.
80/94	*	COOK	870	108
STA. 39+600		TO STA. 39+850		
FED ROAD DIST. NO.		ILLINOIS FED. AID PROJECT		



LEGEND

- | | | | |
|--|--------------------|--|---|
| | WORK ZONE | | DRUMS WITH STEADY BURN LIGHTS |
| | TEMPORARY PAVEMENT | | VERTICAL PANELS |
| | TRAFFIC DIRECTION | | TYPE III BARRICADE WITH 2 FLASHING LIGHTS |
| | LANE CLOSURE | | |



REVISIONS	
NAME	DATE

MT-34

ILLINOIS DEPARTMENT OF TRANSPORTATION
I-94 EAST BOUND / IL 394 SOUTH BOUND

MAINTENANCE OF TRAFFIC
IL-394 - STAGE 3
STA. 39+600 TO STA. 39+850

HORIZ SCALE: 1:500
VERT SCALE: NONE
DATE: JULY 18, 2005

DRAWN BY: STS
CHECKED BY: JES

HNTB