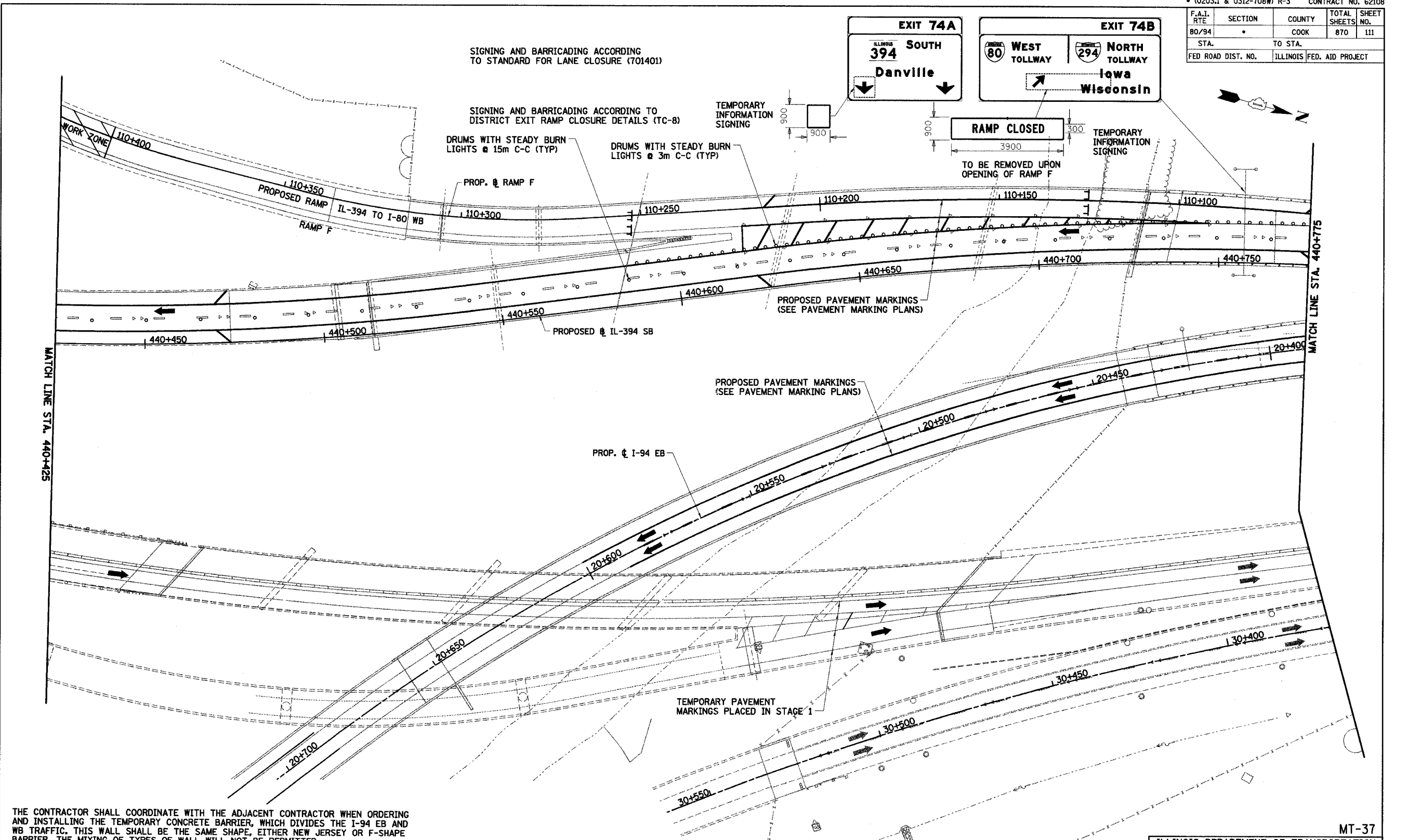


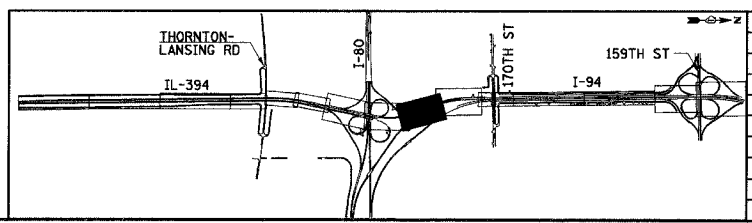
F.A.I. RTE	SECTION	COUNTY	TOTAL SHEETS	SHEET NO.
80/94	*	COOK	870	111
STA. TO STA.		ILLINOIS FED. AID PROJECT		
FED ROAD DIST. NO.				



THE CONTRACTOR SHALL COORDINATE WITH THE ADJACENT CONTRACTOR WHEN ORDERING AND INSTALLING THE TEMPORARY CONCRETE BARRIER, WHICH DIVIDES THE I-94 EB AND WB TRAFFIC. THIS WALL SHALL BE THE SAME SHAPE, EITHER NEW JERSEY OR F-SHAPE BARRIER. THE MIXING OF TYPES OF WALL WILL NOT BE PERMITTED.

**LEGEND**

WORK ZONE	DRUMS WITH STEADY BURN LIGHTS
TEMPORARY PAVEMENT	VERTICAL PANELS
TRAFFIC DIRECTION	TYPE III BARRICADE WITH 2 FLASHING LIGHTS
LANE CLOSURE	



REVISIONS	
NAME	DATE

MT-37

ILLINOIS DEPARTMENT OF TRANSPORTATION  
I-94 EAST BOUND / IL 394 SOUTH BOUND

**MAINTENANCE OF TRAFFIC**  
IL-394 - STAGE 3  
STA. 440+425 TO STA. 440+775

HORIZ SCALE: 1:500  
VERT SCALE: NONE  
DATE: JULY 18, 2005

DRAWN BY: STS  
CHECKED BY: JES

**HNTB**