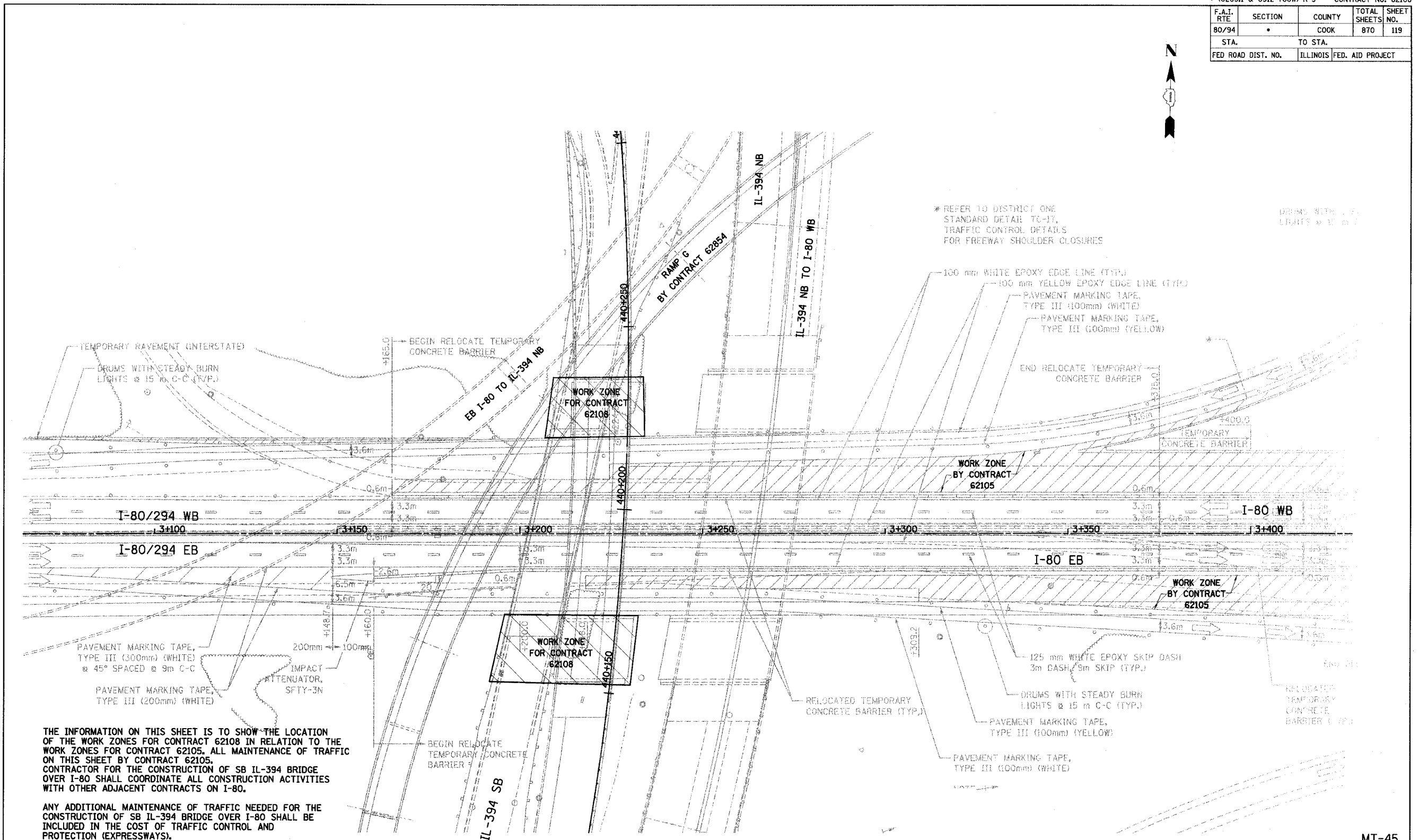
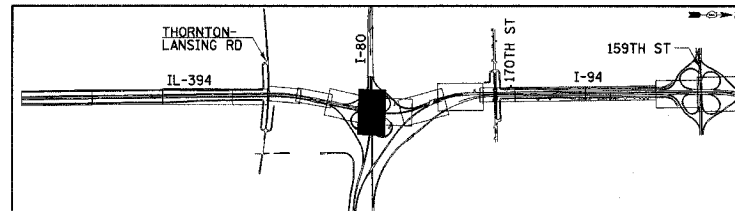


F.A.I. RTE	SECTION	COUNTY	TOTAL SHEETS	SHEET NO.
80/94	*	COOK	870	119
STA.		TO STA.		
FED. ROAD DIST. NO.	ILLINOIS	FED. AID PROJECT		



LEGEND

	WORK ZONE		DRUMS WITH STEADY BURN LIGHTS
	TEMPORARY PAVEMENT		VERTICAL PANELS
	TRAFFIC DIRECTION		TYPE III BARRICADE WITH 2 FLASHING LIGHTS
	LANE CLOSURE		



REVISIONS	
NAME	DATE

MT-45

ILLINOIS DEPARTMENT OF TRANSPORTATION
I-94 EAST BOUND / IL 394 SOUTH BOUND

**MAINTENANCE OF TRAFFIC
STAGE 1A
I-80/94 UNDER SB IL-394**

HORIZ SCALE: 1:500
VERT SCALE: NONE
DATE: JULY 18, 2005

DRAWN BY: STS
CHECKED BY: JES

HNTB