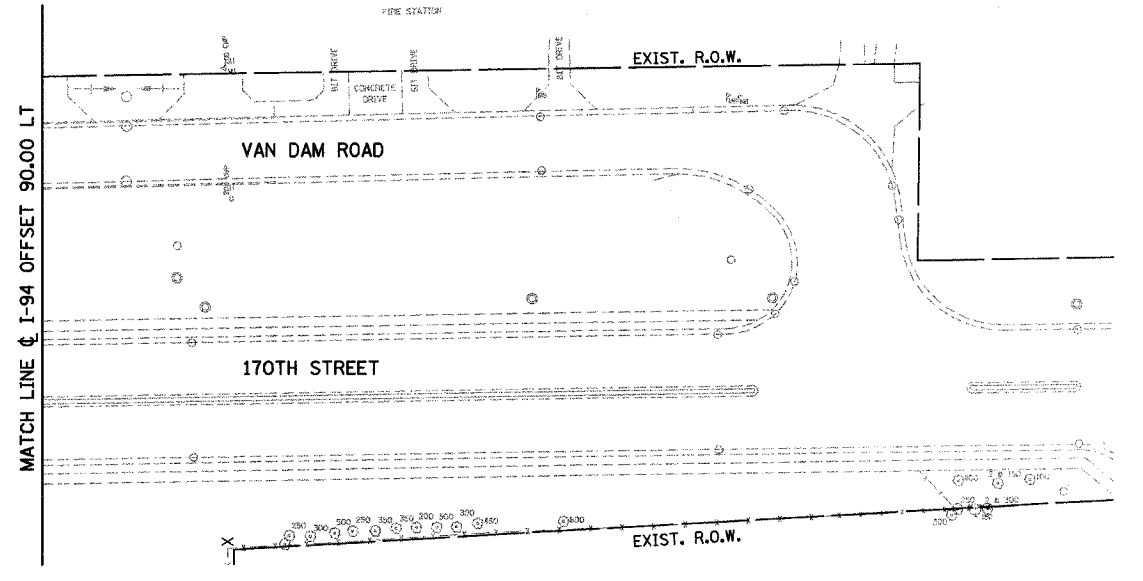
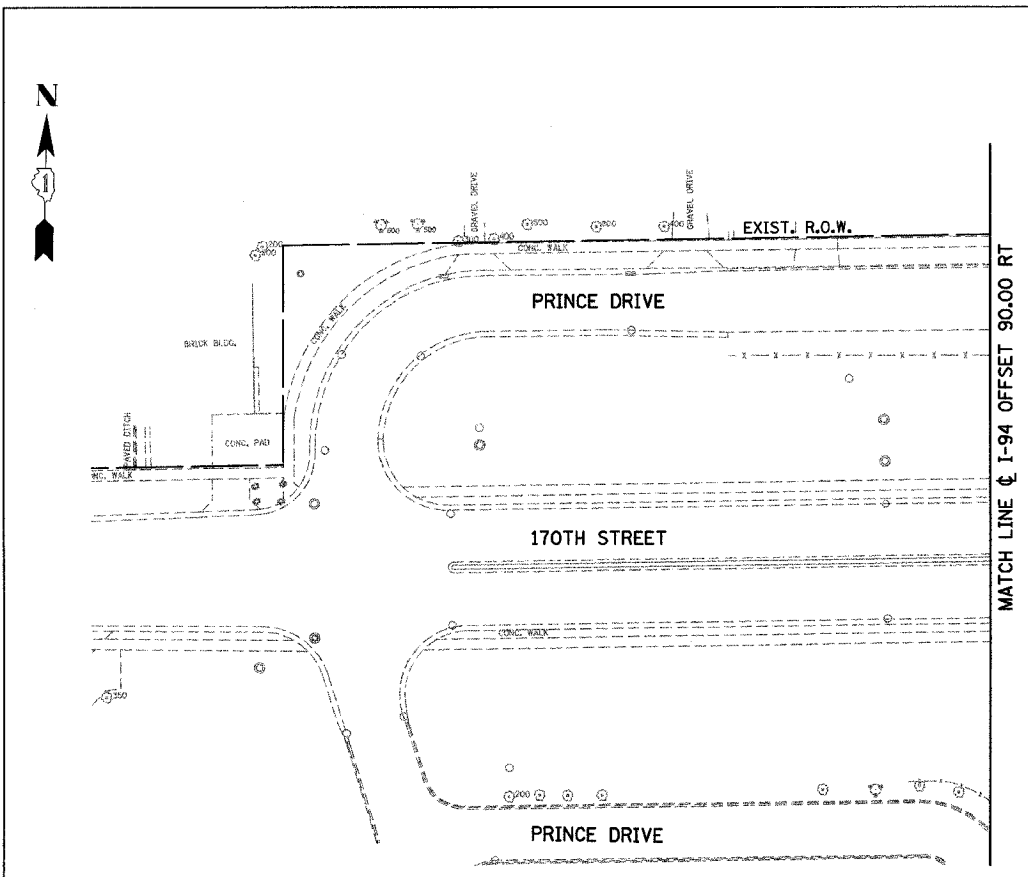
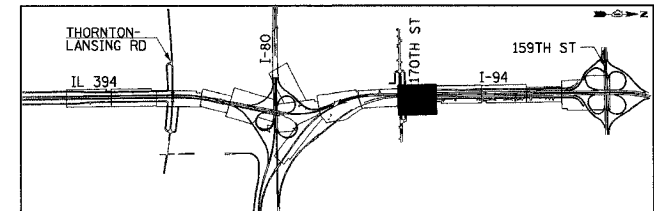
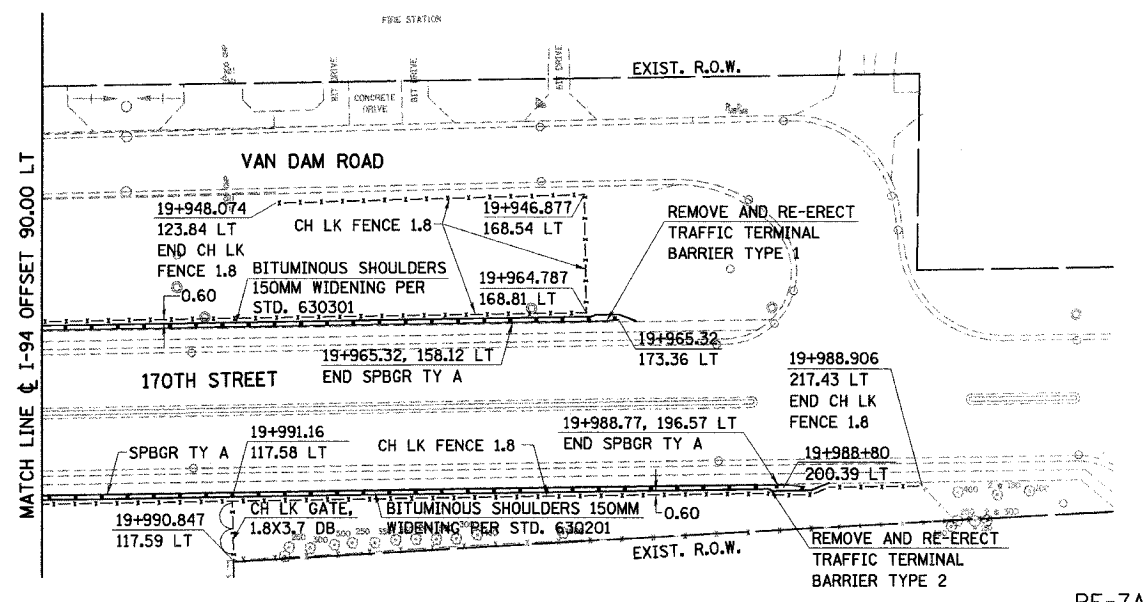
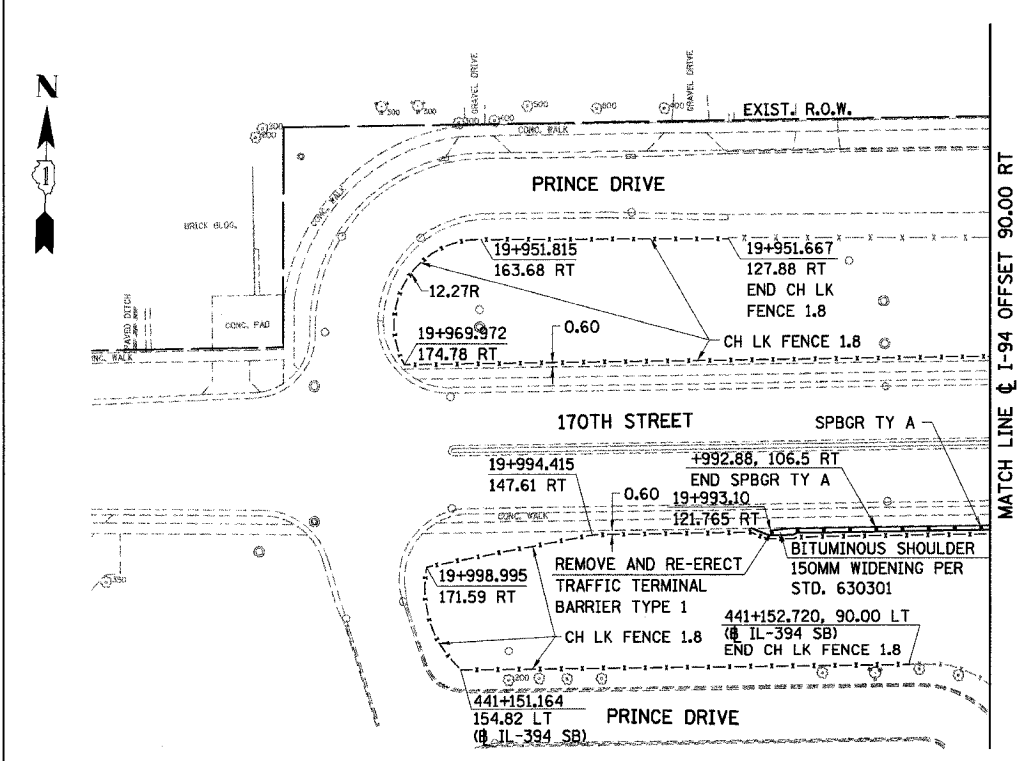


F.A.I. RTE	SECTION	COUNTY	TOTAL SHEETS	SHEET NO.
80/94	*	COOK	870	133A
STA.	19+700	TO STA.	20+000	
FED ROAD DIST. NO.	ILLINOIS	FED. AID PROJECT		



- NOTES:
1. ALL STATIONING AND OFFSET MEASUREMENTS OFF ϕ I-94 UNLESS OTHERWISE NOTED
 2. ALL DIMENSIONS ARE IN METERS (m) UNLESS OTHERWISE NOTED.
 3. ALL TREE DIAMETERS ARE IN MILLIMETERS (mm) UNLESS OTHERWISE NOTED.
 4. WHERE EXISTING SIGNS INTERFERE WITH CONSTRUCTION OPERATIONS, SEE ARTICLE 107.25 OF THE STANDARD SPECIFICATIONS.
 5. SEE CONTRACT 62664 FOR LIGHTING REMOVAL.

EXISTING



REVISIONS	
NAME	DATE

ILLINOIS DEPARTMENT OF TRANSPORTATION
 I-94 EAST BOUND / IL 394 SOUTH BOUND
PROPOSED PLAN
 I-94/IL-394/170TH STREET
 STA. 19+925 TO STA. 20+000 (ϕ I-94)
 STA. 441+140 TO 441+167.161 (ϕ IL-394 SB)

HORIZ SCALE: 1:500
 VERT SCALE:
 DATE: JULY 18, 2005

DRAWN BY: BAJ
 CHECKED BY: JES

HNTB